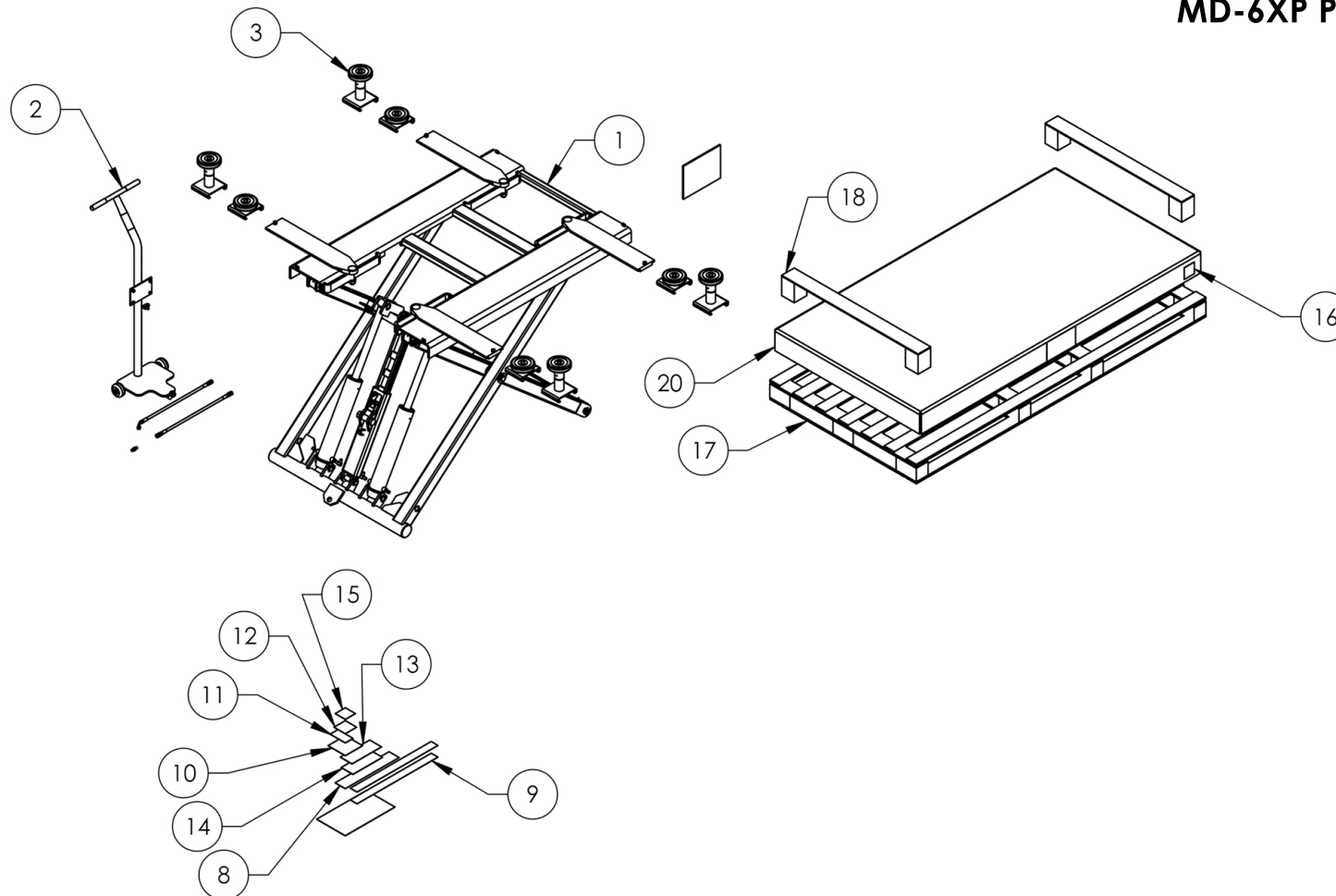


Service Manual

Service Parts & Diagrams

MD-6XP

BendPak SKU 5260169
MD-6XP Production Lift
Version B
08/17/16



This guide is a troubleshooting reference used for maintaining and servicing your BendPak product. It provides comprehensive information on identifying serviceable parts and components and assists in troubleshooting problems and performing assembly/disassembly procedures.



BendPak, Inc. Corporate Office

1645 Lemonwood Drive
Santa Paula, CA 93060 USA
Toll Free US/Canada: 1-800-253-2363
Fax: 1-805-933-9160
info@bendpak.com

Customer Service Desk / Warranty

Customer Service Representatives
Office Tel: 1-805-933-9970
Toll Free US/Canada: 1-800-253-2363
Fax: 1-805-933-9160
customerservice@bendpak.com

Parts Orders

Customer Service Representatives
Office Tel: 1-805-933-9970
Toll Free US/Canada: 1-800-253-2363
Fax: 1-805-933-9160
parts@bendpak.com

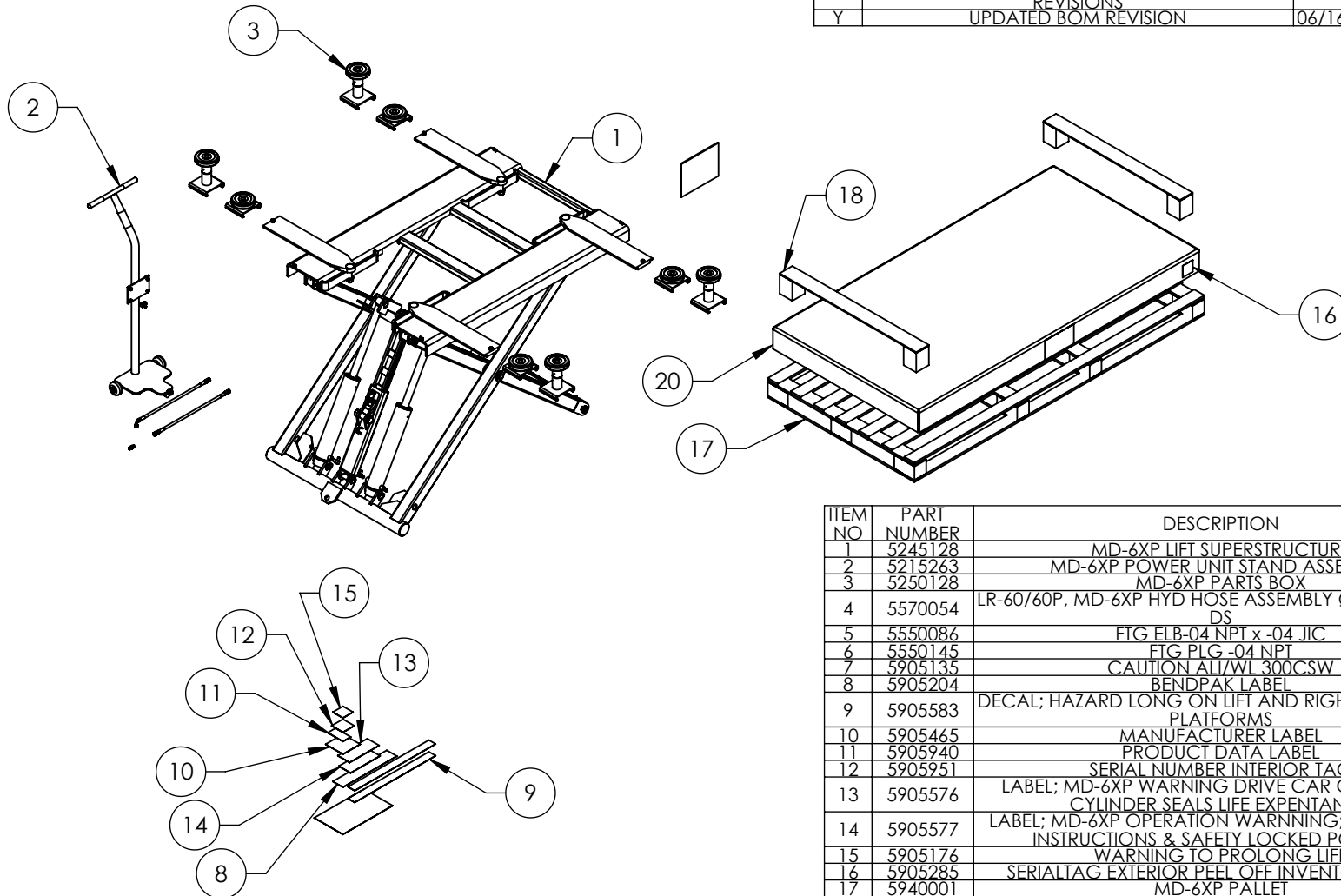
Domestic Sales & Service

USA Sales Representatives
Office Tel: 1-805-933-9970
Toll Free US/Canada: 1-800-253-2363
Fax: 1-805-933-9160
sales@bendpak.com

International Sales & Service

Office Tel: 1-805-933-9970
Exports Department: 1-805-933-9970 Ext. 192
Toll Free US/Canada: 1-800-253-2363
Fax: 1-805-933-9160
bpkexports@bendpak.com

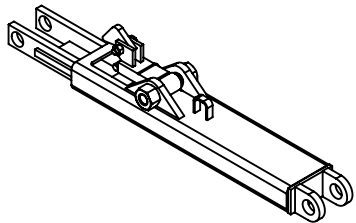
REV	DESCRIPTION	REVISION	DATE	EDITED BY	ECO#
W	UPDATED BOM REVISION		03/01/2016	CA	00739
X	ADDED 5550086, 5550145, 5570054, 5905576, 5905577 AND 5905583, REMOVED 5905760, 5905240 AND (1) 5905204, UPDATED BOM REVISIONS		03/18/2016	TM	00755
Y	UPDATED BOM REVISION		06/16/2016	TS	00766



ITEM NO	PART NUMBER	DESCRIPTION	QTY	REV
1	5245128	MD-6XP LIFT SUPERSTRUCTURE	1	L
2	5215263	MD-6XP POWER UNIT STAND ASSEMBLY	1	B
3	5250128	MD-6XP PARTS BOX	1	N
4	5570054	LR-60/60P, MD-6XP HYD HOSE ASSEMBLY Ø6.4 x 540mm DS	1	C
5	5550086	FTG FLB-04 NPT x -04 JIC	2	--
6	5550145	FTG PLG -04 NPT	2	--
7	5905135	CAUTION ALI/WL 300CSW	1	A
8	5905204	BENDPAK LABEL	1	--
9	5905583	DECAL; HAZARD LONG ON LIFT AND RIGHT SIDE OF THE PLATFORMS	2	--
10	5905465	MANUFACTURER LABEL	1	--
11	5905940	PRODUCT DATA LABEL	1	--
12	5905951	SERIAL NUMBER INTERIOR TAG	1	--
13	5905576	LABEL; MD-6XP WARNING DRIVE CAR OVER LIFT & CYLINDER SEALS LIFE EXPENTANCY	1	--
14	5905577	LABEL; MD-6XP OPERATION WARNING; OPERATION INSTRUCTIONS & SAFETY LOCKED POSITION	1	--
15	5905176	WARNING TO PROLONG LIFE	1	--
16	5905285	SERIALTAG EXTERIOR PEEL OFF INVENTORY LABEL	1	--
17	5940001	MD-6XP PALLET	1	A
18	5940002	MD-6XP CARRIER BOX CORNER SUPPORT	2	A
19	5905966	MD-6XP PACKAGING LABEL	1	A
20	5781003	MD-6XP CARRIER BOX	1	A

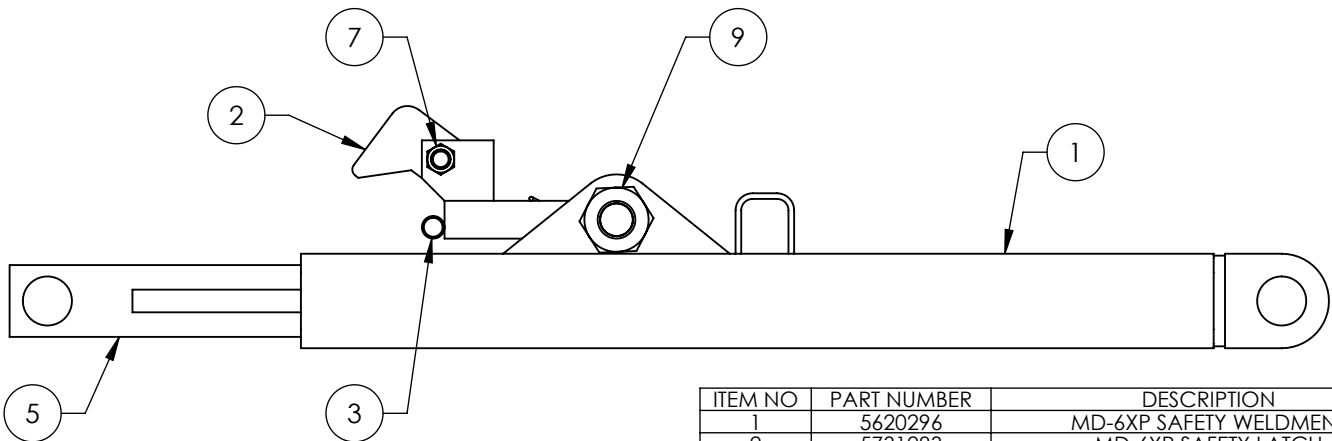
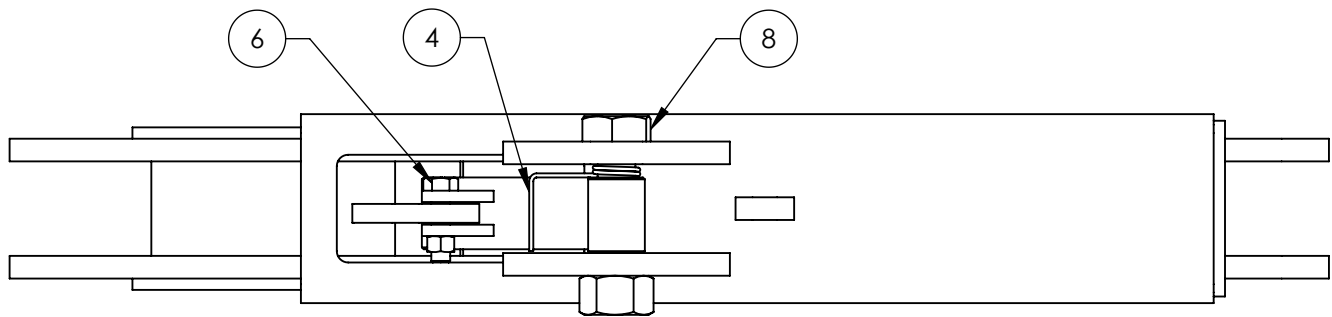
DO NOT SCALE DRAWING	NAME	DATE	1645 LEMONWOOD DR. SANTA PAULA, CA 93060
DIMENSIONS ARE IN MM 	DRAWN	TM 02/19/2009	
	CHECKED	DB 08/15/2016	
THIRD ANGLE PROJECTION 			TITLE: MD-6XP PRODUCTION LIFT VER B
PROPRIETARY AND CONFIDENTIAL THE INFORMATION CONTAINED IN THIS DRAWING IS THE SOLE PROPERTY OF BENDPAK INC. ANY REPRODUCTION IN PART OR AS A WHOLE WITHOUT THE WRITTEN PERMISSION OF BENDPAK INC. IS PROHIBITED.		SIZE DWG. NO. A 5260169	REV Y
SCALE: 1:35			SHEET 1 OF 2

- NOTE: UNLESS OTHERWISE SPECIFIED.**
- SEE SHIPPING INSTRUCTIONS FOR FINAL PACKAGING
 - ALL LABELS TO BE APPLIED AFTER PAINTING.
 - SEE ATTACHED LABEL PLACEMENT SHEET



ISOMETRIC VIEW
FOR REFERENCE ONLY
DO NOT SCALE

REVISION				
REV	DESCRIPTION	DATE	EDITED BY	ECO#
A	PRODUCTION RELEASE, DERIVED FROM T1201	02/04/2009	TM	00233
B	UPDATED BOM REVISION	11/07/2011	TM	00483
C	UPDATED BOM REVISION	01/04/2016	TM	00736



ITEM NO	PART NUMBER	DESCRIPTION	QTY	REV
1	5620296	MD-6XP SAFETY WELDMENT	1	A
2	5731283	MD-6XP SAFETY LATCH	1	A
3	5600258	MD-6XP SAFETY CATCH WELDMENT	1	A
4	5540016	MD-6XP SAFETY SPRING	1	B
5	5620099	MD-6XP SAFETY STOP WELDMENT	1	B
6	5530760	HEX HEAD BOLT M10x1.25x35	1	-
7	5535013	NUT M10 x 1.5 NL	1	-
8	5530041	HHB M20 x 2.5 x 90 CL10.9	1	-
9	5535017	NUT M20 x 2.5 NL	1	-

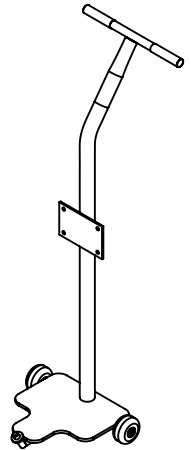
DO NOT SCALE DRAWING	NAME	DATE	1645 LEMONWOOD DR. SANTA PAULA, CA 93060
DIMENSIONS ARE IN MM 	DRAWN	TM 02/04/2009	
	CHECKED	CA 01/08/2016	
THIRD ANGLE PROJECTION			
PROPRIETARY AND CONFIDENTIAL THE INFORMATION CONTAINED IN THIS DRAWING IS THE SOLE PROPERTY OF BENDPAK INC. ANY REPRODUCTION IN PART OR AS A WHOLE WITHOUT THE WRITTEN PERMISSION OF BENDPAK INC. IS PROHIBITED.			TITLE: MD-6XP SAFETY ASSEMBLY
SIZE DWG. NO. A 521 5253		REV C	
SCALE: 1:4			SHEET 1 OF 1

NOTE: UNLESS OTHERWISE SPECIFIED.

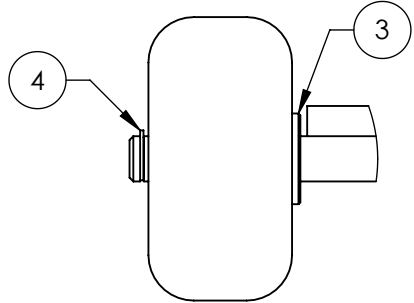
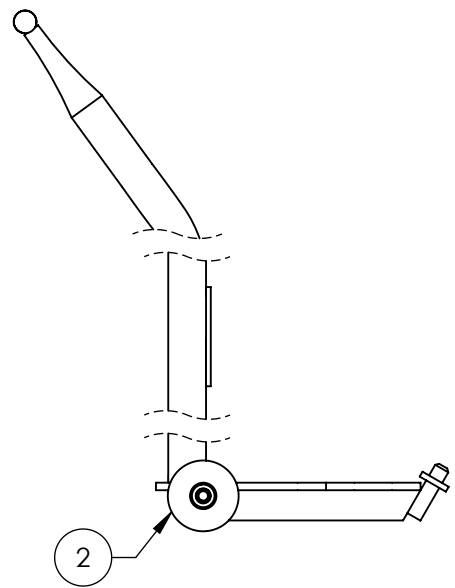
1. ASSEMBLE ITEMS AS SHOWN

NEXT ASSEMBLY
5245128

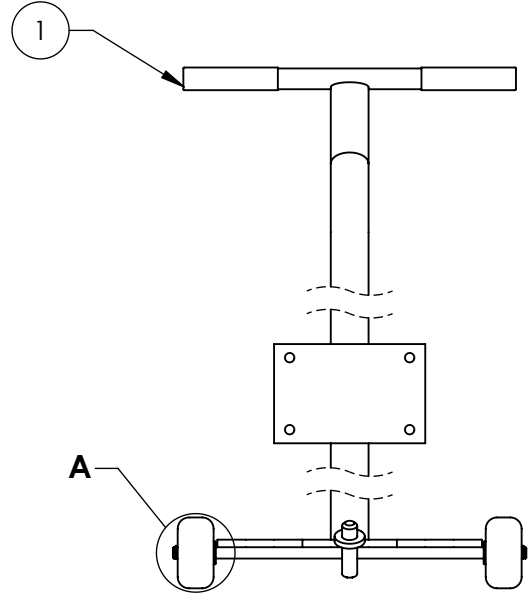
REVISION				
REV	DESCRIPTION	DATE	EDITED BY	ECO#
A	PRODUCTION RELEASE, DERIVED FROM T1151	01/29/2009	TM	00233
B	UPDATED BOM REVISION	10/23/2013	TM	00632



ISOMETRIC VIEW
FOR REFERENCE ONLY
DO NOT SCALE



DETAIL A
SCALE 1 : 2

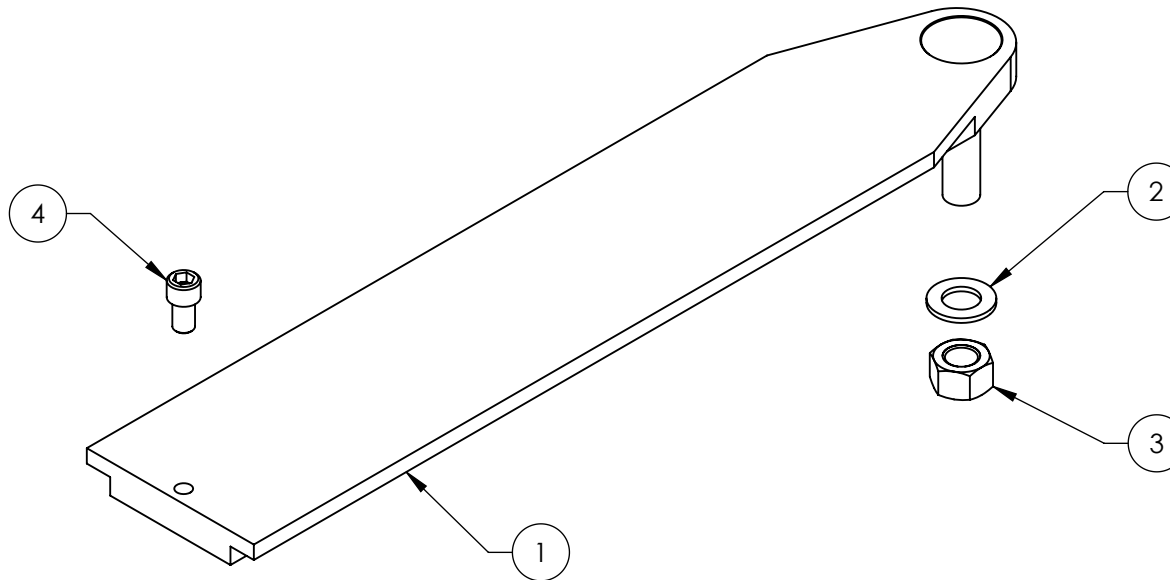


ITEM NO	PART NUMBER	DESCRIPTION	QTY	REV
1	5600187	MD-6XP POWER UNIT STAND WELDMENT	1	B
2	5215224	LR-6000P, MD-6XP WHEEL ASSEMBLY	2	A
3	5545347	WASHER, M12 FLAT WASHER	2	-
4	5540116	TRUARC Ø12mm 5103-50	2	A

DO NOT SCALE DRAWING	NAME	DATE	1645 LEMONWOOD DR. SANTA PAULA, CA 93060
DIMENSIONS ARE IN MM	DRAWN GJZ	01/04/2007	
	CHECKED MM	03/20/14	TITLE: MD-6XP POWER UNIT STAND ASSEMBLY
	THIRD ANGLE PROJECTION		
MATERIAL: ---	PROPRIETARY AND CONFIDENTIAL THE INFORMATION CONTAINED IN THIS DRAWING IS THE SOLE PROPERTY OF BENDPAK INC. ANY REPRODUCTION IN PART OR AS A WHOLE WITHOUT THE WRITTEN PERMISSION OF BENDPAK INC. IS PROHIBITED.		SIZE DWG. NO. A 5215263 REV B
SIZE: ---	NEXT ASSEMBLY 5260169		SCALE: 1:8 SHEET 1 OF 1

NOTE: UNLESS OTHERWISE SPECIFIED.

REVISION					
REV	DESCRIPTION	DATE	EDITED BY	ECO#	
A	PRODUCTION RELEASE, DERIVED FROM T1186	02/02/2009	TM	00233	
A-001	UPDATED NEXT ASSEMBLY	10/06/2010	TM	00406	
B	UPDATED BOM REVISION	11/07/2011	TM	00483	
C	UPDATED BOM REVISION	12/14/2012	TM	00568	



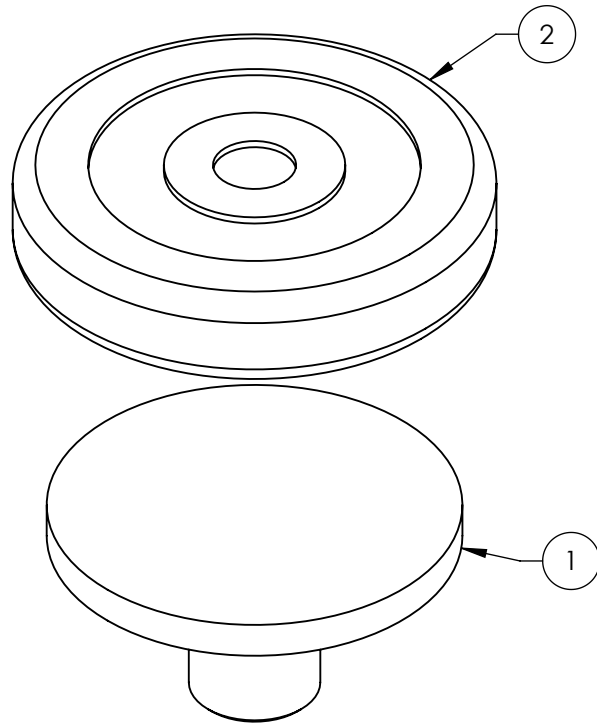
ITEM NO	PART NUMBER	DESCRIPTION	QTY	REV
1	5600237	MD-6XP LIFT ARM WELDMENT	1	C
2	5545343	WASHER, M20 FLAT	1	-
3	5535303	NUT M20 x 2.5	1	-
4	5530336	SHCS M12 x 1.75 x 20	1	-

DO NOT SCALE DRAWING		NAME	DATE	1645 LEMONWOOD DR. SANTA PAULA, CA 93060
DIMENSIONS ARE IN MM		DRAWN	MT 03/17/2008	
		CHECKED	MT 12/26/2012	
		THIRD ANGLE PROJECTION		TITLE:
MATERIAL: ---				MD-6XP LIFT ARM ASSEMBLY
SIZE: ---		PROPRIETARY AND CONFIDENTIAL THE INFORMATION CONTAINED IN THIS DRAWING IS THE SOLE PROPERTY OF BENDPAK INC. ANY REPRODUCTION IN PART OR AS A WHOLE WITHOUT THE WRITTEN PERMISSION OF BENDPAK INC. IS PROHIBITED.		SCALE: 1:4
NEXT ASSEMBLY		DWG. NO. 5215264 REV C		SHEET 1 OF 1
5210163				
5250128				

NOTE: UNLESS OTHERWISE SPECIFIED.

- SEE SHIPPING INSTRUCTIONS FOR FINAL PACKAGING
- ASSEMBLE ITEMS AS SHOWN

REVISION				
REV	DESCRIPTION	DATE	EDITED BY	ECO#
C	UPDATED BOM REVISION	01/14/2011	TM	00431
D	UPDATED BOM REVISION	06/17/2011	MT	00463
D-001	UPDATED NEXT ASSEMBLY	06/21/2011	MT	00461
D-002	UPDATED NEXT ASSEMBLY	03/08/2012	MT	00490
D-003	UPDATED NEXT ASSEMBLY	06/27/2012	TM	00531
E	UPDATE BOM REVISION AND NEXT ASSEMBLY	12/19/2012	TM	00572
E-001	UPDATED NEXT ASSEMBLY	03/14/2013	TM	00586
E-002	UPDATED NEXT ASSEMBLY	06/21/2013	TM	00605
E-003	UPDATED NEXT ASSEMBLY	10/16/2014	TM	00663
E-004	UPDATED NEXT ASSEMBLY	03/24/2015	MR	00691
E-005	UPDATED NEXT ASSEMBLY	08/06/2015	JM	00715
E-006	UPDATED NEXT ASSEMBLY	11/24/2015	TM	00738
E-007	UPDATED NEXT ASSEMBLY	01/21/2016	TM	00739



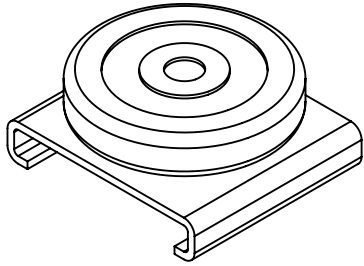
ITEM NO	PART NUMBER	DESCRIPTION	QTY	REV
1	5600588	ROUND LIFT PAD WELDMENT	1	B
2	5715017	ROUND LIFT PAD ADAPTER RUBBER PAD	1	D

DO NOT SCALE DRAWING		NAME	DATE	1645 LEMONWOOD DR. SANTA PAULA, CA 93060
DIMENSIONS ARE IN MM 		DRAWN	AC 12/30/2010	
		CHECKED	DB 06/14/2016	
THIRD ANGLE PROJECTION			TITLE: ROUND LIFT PAD ADAPTER ASSEMBLY	
			SIZE DWG. NO. A 5215507	REV E
PROPRIETARY AND CONFIDENTIAL THE INFORMATION CONTAINED IN THIS DRAWING IS THE SOLE PROPERTY OF BENDPAK INC. ANY REPRODUCTION IN PART OR AS A WHOLE WITHOUT THE WRITTEN PERMISSION OF BENDPAK INC. IS PROHIBITED.			SCALE: 1:2 SHEET 1 OF 1	

NEXT ASSEMBLY
5150561
5210045
5210163
5250080
5250113
5250115
5250128

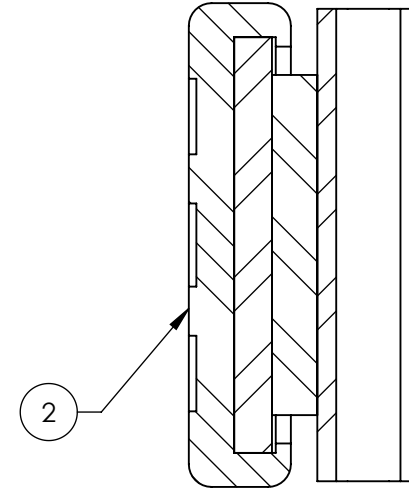
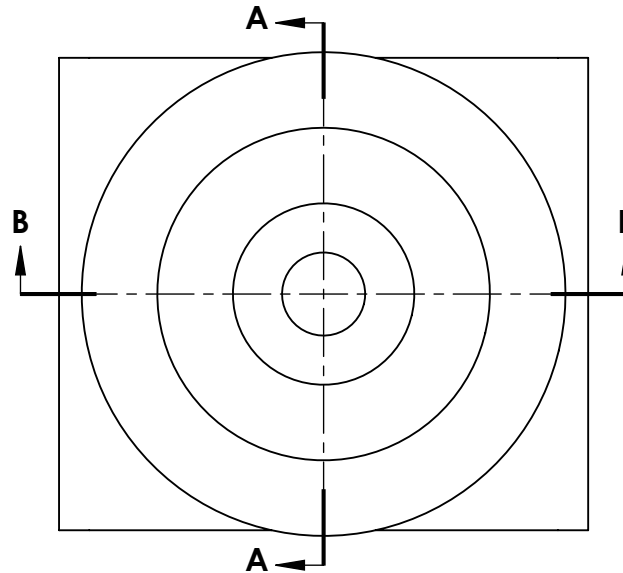
NOTE: UNLESS OTHERWISE SPECIFIED.

- SEE SHIPPING INSTRUCTIONS FOR FINAL PACKAGING
- ASSEMBLE ITEMS AS SHOWN

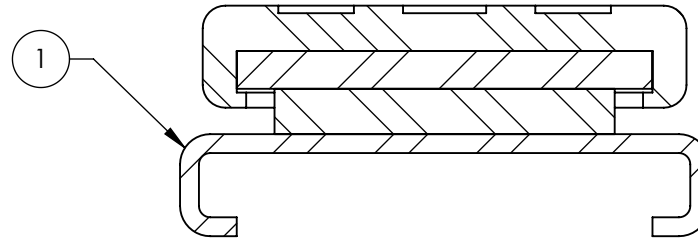


ISOMETRIC VIEW
FOR REFERENCE ONLY
DO NOT SCALE

REV	DESCRIPTION	REVISION	DATE	EDITED BY	ECO#
C	UPDATED BOM REVISION		12/19/2012	TM	00572
D	UPDATED BOM REVISION		02/18/2013	TM	00580
D-001	UPDATED NEXT ASSEMBLY		08/06/2015	JM	00715
E	UPDATED TITLE TO REFLECT MARKETING, UPDATED BOM REVISION		01/2/2016	TM	00739



SECTION A-A



SECTION B-B

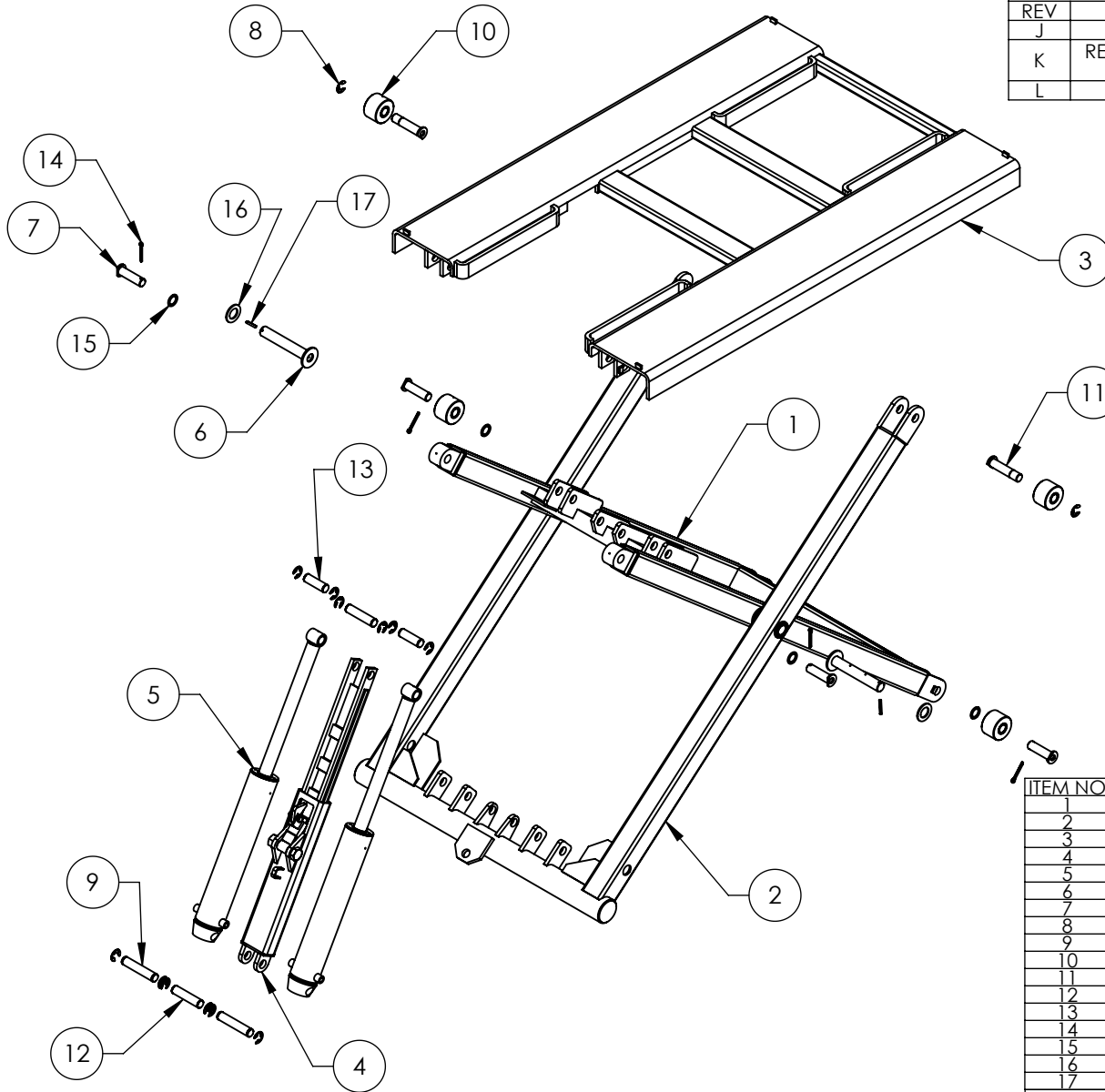
ITEM NO	PART NUMBER	DESCRIPTION	QTY	REV
1	5600628	MD-6XP/P9000/RBJ45000 SHORT ROUND LIFT PAD WELDMENT	1	E
2	5715017	ROUND LIFT PAD ADAPTER RUBBER PAD	1	D

DO NOT SCALE DRAWING	NAME	DATE	1645 LEMONWOOD DR. SANTA PAULA, CA 93060
DIMENSIONS ARE IN MM 	DRAWN	TM 05/26/2011	
	CHECKED	DB 06/14/2016	
THIRD ANGLE PROJECTION		TITLE: MD-6XP/P9000/RBJ4500 SHORT ROUND LIFT PAD ASSEMBLY	
PROPRIETARY AND CONFIDENTIAL THE INFORMATION CONTAINED IN THIS DRAWING IS THE SOLE PROPERTY OF BENDPAK INC. ANY REPRODUCTION IN PART OR AS A WHOLE WITHOUT THE WRITTEN PERMISSION OF BENDPAK INC. IS PROHIBITED.		SIZE DWG. NO. A 5215523	REV E
SCALE: 1:2			SHEET 1 OF 1

NOTE: UNLESS OTHERWISE SPECIFIED:

NEXT ASSEMBLY
5210045
5210367
5250128

REVISION				
REV	DESCRIPTION	DATE	EDITED BY	ECO#
J	UPDATED BOM REVISION	01/04/2016	TM	00736
K	REPLACED 5746121 WITH 5601085, REPLACED 5540015 WITH 5545415, ADDED 5505106	03/18/2016	TM	00755
L	UPDATED BOM REVISION	06/16/2016	TS	00766



ITEM NO	PART NUMBER	DESCRIPTION	QTY	REV
1	5600238	MD-6XP INNER ARM WELDMENT	1	C
2	5600240	MD-6XP OUTER ARM WELDMENT	1	B
3	5600239	MD-6XP COVER WELDMENT	1	C
4	5215253	MD-6XP SAFETY ASSEMBLY	1	C
5	5502175	CYLINDER ASSEMBLY Ø3.0 x 15	2	C
6	5601085	MD-6XP MAIN ARM PIVOT PIN WELDMENT	2	A
7	5505723	MD-6XP INNER ARM PIN WELDMENT	4	D
8	5540275	E RING Ø25mm OD DIN 6799 0250	14	--
9	5505722	MD-6XP CYLINDER PIN, LOWER	2	A
10	5215265	MD-6XP ROLLER ASSEMBLY	4	C
11	5505719	MD-6XP OUTER SCISSOR ROLLER PIN WELDMENT	2	B
12	5505720	MD-6XP SAFETY PIN	2	A
13	5505721	MD-6XP CYLINDER PIN, UPPER	2	A
14	5505400	Ø6 x 50mm COTTER PIN	4	--
15	5545001	26 I.D. x 37 O.D. x 2mm	4	--
16	5545415	WASHER M30 x 56 FLAT	2	A
17	5505106	SPRING PIN M6 x 50	2	A

DO NOT SCALE DRAWING		NAME	DATE	1645 LEMONWOOD DR. SANTA PAULA, CA 93060
		DRAWN	TM 02/19/2009	
		CHECKED	DB 08/15/2016	
DIMENSIONS ARE IN MM		THIRD ANGLE PROJECTION		TITLE: MD-6XP LIFT SUPERSTRUCTURE
				SIZE DWG. NO.
				A 5245128
NEXT ASSEMBLY		SCALE: 1:20		REV L
5260169		SHEET 1 OF 1		

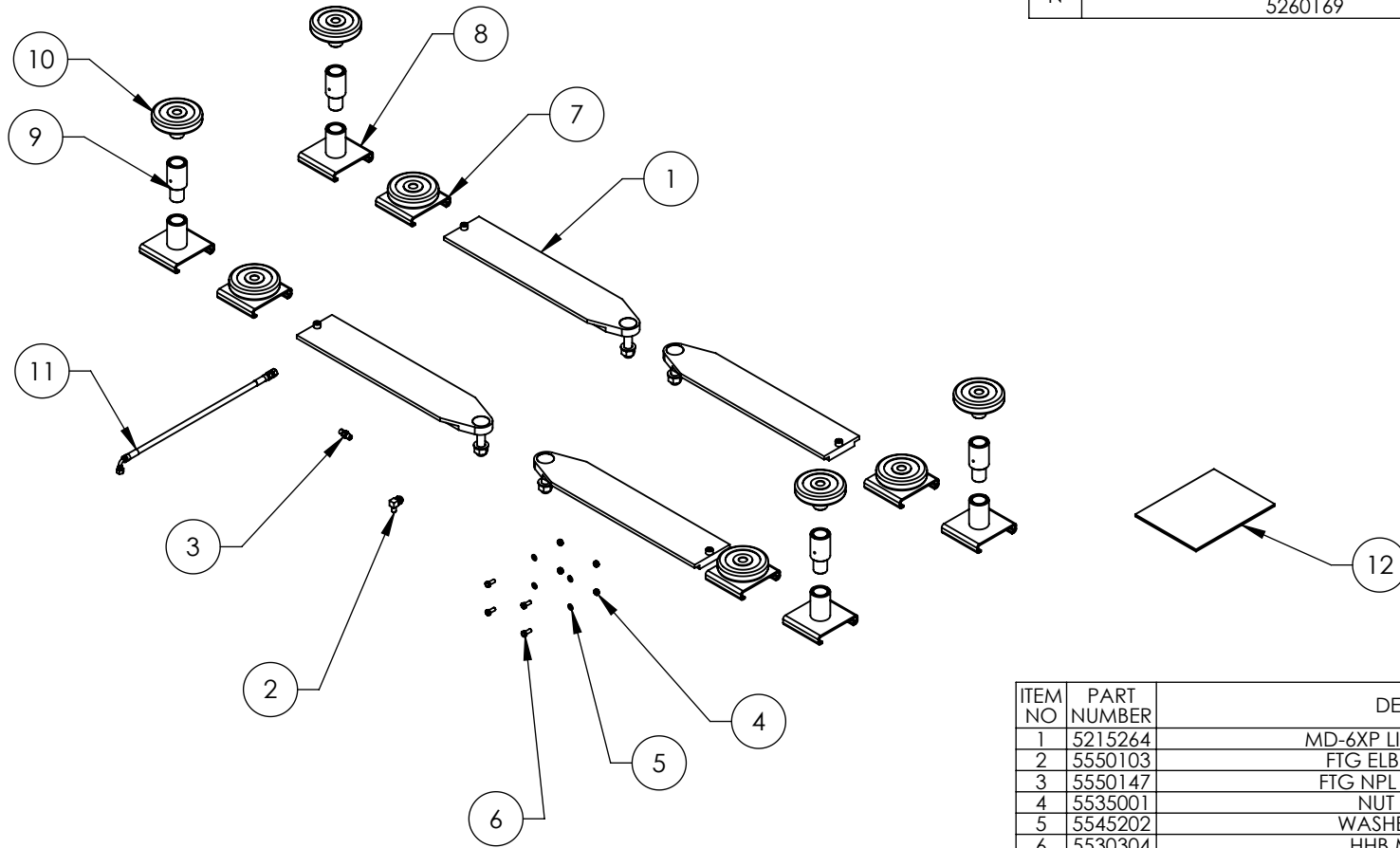
NOTE: UNLESS OTHERWISE SPECIFIED.

- SEE SHIPPING INSTRUCTIONS FOR FINAL PACKAGING
- ASSEMBLE ITEMS AS SHOWN

NEXT ASSEMBLY
5260169

PROPRIETARY AND CONFIDENTIAL
THE INFORMATION CONTAINED IN THIS DRAWING IS THE SOLE PROPERTY OF BENDPAK INC. ANY REPRODUCTION IN PART OR AS A WHOLE WITHOUT THE WRITTEN PERMISSION OF BENDPAK INC. IS PROHIBITED.

		REVISION		
REV	DESCRIPTION	DATE	EDITED BY	ECO#
L	REMOVED 5900151, 5905135, 5905204, 5905465, 5905940, 5930800, 5905240, 5905176 & 5905760, UPDATED BOM REVISIONS	09/21/2015	JM	00726
M	UPDATED BOM REVISIONS	01/22/2016	TM	00739
N	MOVED 5550086, 5550145, AND 5570054 TO 5260169	04/13/2016	TM	00755



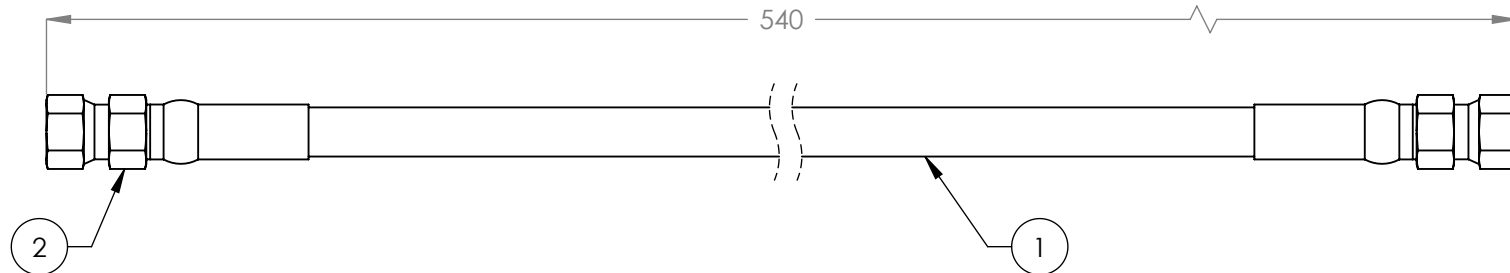
ITEM NO	PART NUMBER	DESCRIPTION	QTY	REV
1	5215264	MD-6XP LIFT ARM ASSEMBLY	4	C
2	5550103	FTG ELB -04 JIC -06 ORB	1	-
3	5550147	FTG NPL -04 JIC x -04 NPT	1	-
4	5535001	NUT M8 x 1.25 NL	4	-
5	5545202	WASHER M8 x Ø15 SL	4	-
6	5530304	HHB M8 x 1.25 x 20	4	-
7	5215523	MD-6XP/P9000/RBJ4500 SHORT ROUND LIFT PAD ASSEMBLY	4	E
8	5600257	MD-6XP/P9000/RBJ4500 LIFT PAD WELDMENT BASE	4	D
9	5746390	MEDIUM LIFT PAD EXTENSION Ø35 x 113mm	4	E
10	5215507	ROUND LIFT PAD ADAPTER ASSEMBLY	4	E
11	5570013	HD-14LS/MD-6XP HOSE ASSY Ø6.4 x 3660mm	1	D
12	5900108	MD-6XP INSTALLATION MANUAL	1	-

DO NOT SCALE DRAWING		NAME	DATE	1645 LEMONWOOD DR. SANTA PAULA, CA 93060
DIMENSIONS ARE IN MM		DRAWN	TM 02/18/2009	
		CHECKED	DB 06/23/2016	
		THIRD ANGLE PROJECTION		TITLE: MD-6XP PARTS BOX
				SIZE DWG. NO. REV A 5250128 N
NEXT ASSEMBLY 5260169		PROPRIETARY AND CONFIDENTIAL THE INFORMATION CONTAINED IN THIS DRAWING IS THE SOLE PROPERTY OF BENDPAK INC. ANY REPRODUCTION IN PART OR AS A WHOLE WITHOUT THE WRITTEN PERMISSION OF BENDPAK INC. IS PROHIBITED.		SCALE: 1:18 SHEET 1 OF 1



NOTE: UNLESS OTHERWISE SPECIFIED.

1. SEE SHIPPING INSTRUCTIONS FOR FINAL PACKAGING

REVISION				
REV	DESCRIPTION	DATE	EDITED BY	ECO#
A	PRODUCTION RELEASE	01/25/2008	AC	00142
B	UPDATED DRAWING TO NEW STANDARDS AND TITLE	02/19/2009	TM	00233
B-001	UPDATED NEXT ASSEMBLY	03/07/2011	TM	00443
C	REPLACED 5570110 WITH 5570129	09/21/2015	JM	00726
C-001	UPDATED NEXT ASSEMBLY UPDATED NEXT ASSEMBLY	04/13/2016	TM	00755



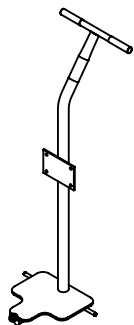
ITEM NO	PART NUMBER	DESCRIPTION	QTY	REV
1	5570129	Ø6.4 ID HYDRAULIC HOSE	474mm*	-
2	5550325	FTG NPL Ø1/4 CRIMP x -04 JIC	2	-

DO NOT SCALE DRAWING		NAME	DATE	 1645 LEMONWOOD DR. SANTA PAULA, CA 93060
DIMENSIONS ARE IN MM TOLERANCES: 0. = ±1.5 0.0 = ±1.0 0.00 = ±0.25 0.000 = ±0.13		DRAWN	AC 01/18/2008	
ANGULAR: MACH±2° SURFACE FINISH 1.6 ISO R _a μm FOR MACHINED SURFACES UNLESS OTHERWISE SPECIFIED		CHECKED		
		THIRD ANGLE PROJECTION		TITLE: LR-60/60P, MD-6XP HYD HOSE ASSEMBLY Ø6.4 x 540mm DS
				SIZE DWG. NO. REV A 5570054 C
		PROPRIETARY AND CONFIDENTIAL THE INFORMATION CONTAINED IN THIS DRAWING IS THE SOLE PROPERTY OF BENDPAK INC. ANY REPRODUCTION IN PART OR AS A WHOLE WITHOUT THE WRITTEN PERMISSION OF BENDPAK INC. IS PROHIBITED.		SCALE: 1:2 SHEET 1 OF 1

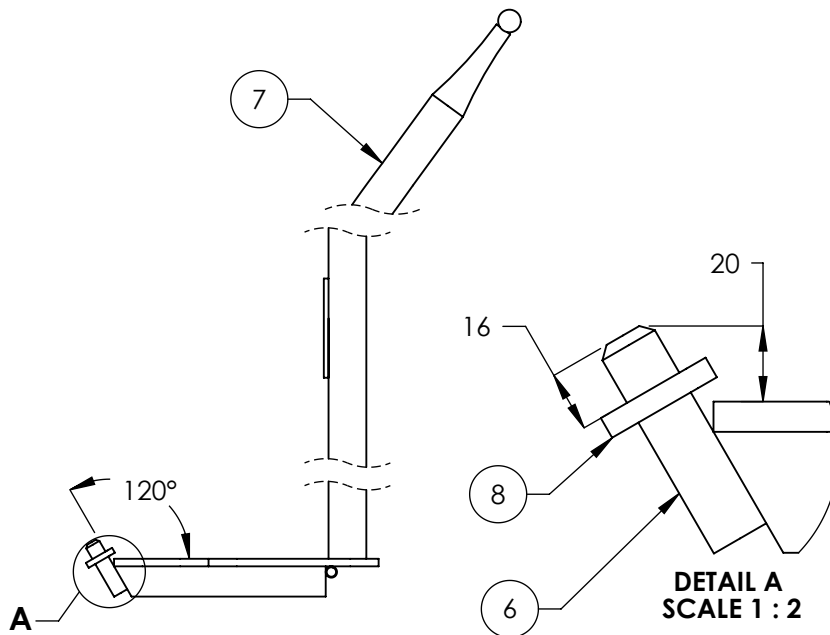
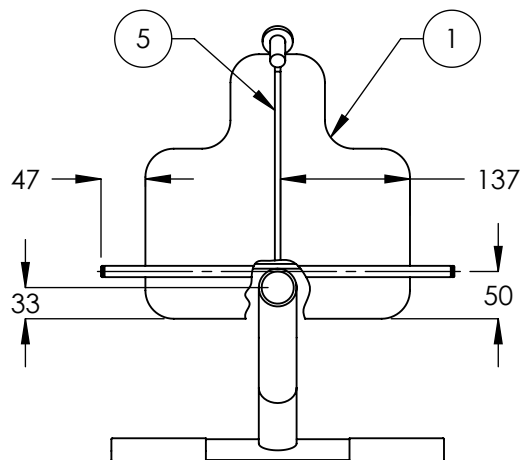
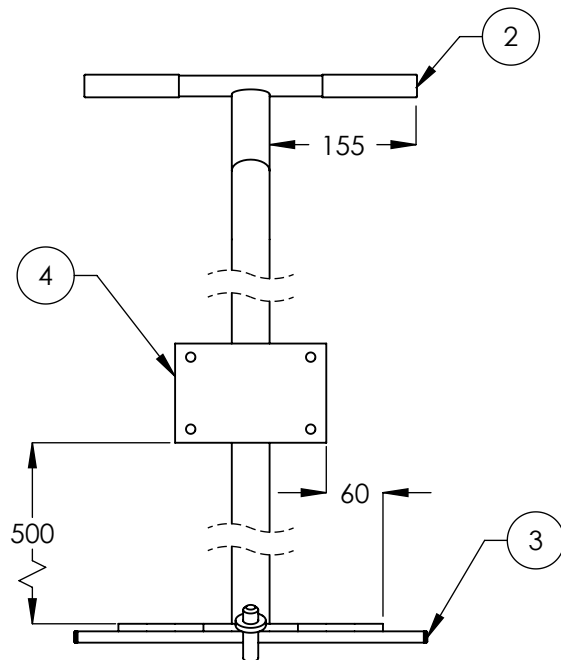
NOTE: UNLESS OTHERWISE SPECIFIED.

- FOR ITEM 1 SPECIFICATIONS REFER TO PART SPECIFICATION FORM
- (*)ITEM 1 QTY FOR REFERENCE ONLY

NEXT ASSEMBLY
5250165
5260169



ISOMETRIC VIEW
FOR REFERENCE ONLY
DO NOT SCALE



DETAIL A
SCALE 1 : 2

REVISION				
REV.	DESCRIPTION	DATE	EDITED BY	ECO#
A	PRODUCTION RELEASE, DERIVED FROM T1151	01/29/2009	TM	00233
B	UPDATED BOM REVISION	10/23/2013	TM	00632

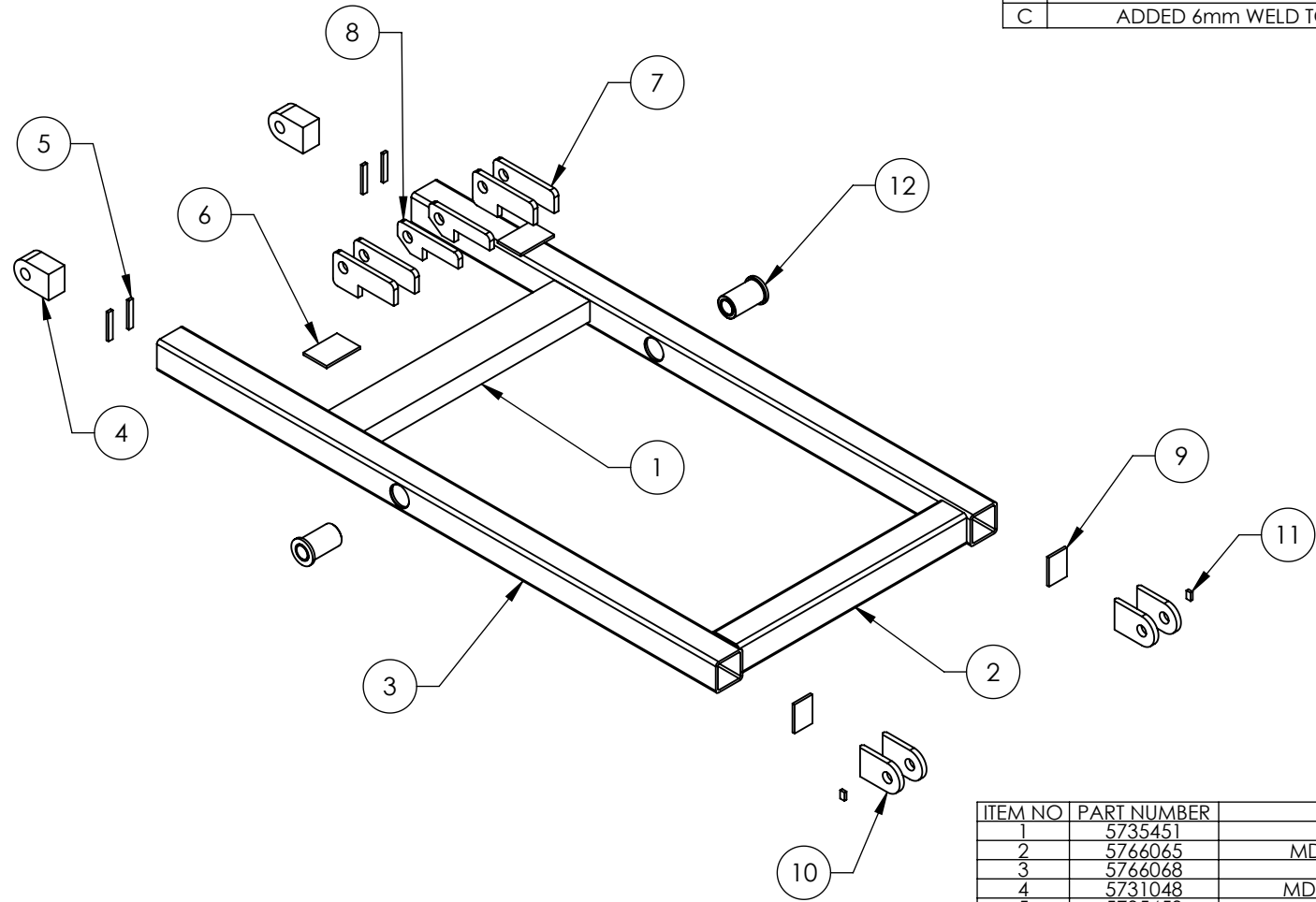
ITEM NO	PART NUMBER	DESCRIPTION	QTY	REV
1	5730046	MD-6XP POWER UNIT STAND PLATE	1	A
2	5755043	MD-6XP POWER UNIT STAND HANDLE BAR	1	A
3	5746122	MD-6XP CART AXLE	1	A
4	5736179	MD-6XP POWER UNIT MOUNTING PLATE	1	A
5	5736180	MD-6XP TOW CART SUPPORT BAR	1	A
6	5746129	MD-6XP TOW CART PIN	1	A
7	5756010	MD-6XP POWER UNIT STAND BAR	1	A
8	5746130	MD-6XP TOW PIN COLLAR	1	B
9	5715363	MD-6XP PLASTIC HANDLE COVER	2	A

DO NOT SCALE DRAWING		NAME	DATE	1645 LEMONWOOD DR. SANTA PAULA, CA 93060
DIMENSIONS ARE IN MM TOLERANCES: 0. = ±1.5 0.0 = ±0.5		DRAWN	TM 01/29/2009	
ANGULAR: 0. = ±2°		CHECKED	MM 03/20/14	TITLE: MD-6XP POWER UNIT STAND WELDMENT
SURFACE FINISH 1.6 ISO R _a μm FOR MACHINED SURFACES UNLESS OTHERWISE SPECIFIED		THIRD ANGLE PROJECTION		
MATERIAL: --				SIZE DWG. NO. A 5600187
NEXT ASSEMBLY 5215263		PROPRIETARY AND CONFIDENTIAL THE INFORMATION CONTAINED IN THIS DRAWING IS THE SOLE PROPERTY OF BENDPAK INC. ANY REPRODUCTION IN PART OR AS A WHOLE WITHOUT THE WRITTEN PERMISSION OF BENDPAK INC. IS PROHIBITED.		REV B
SCALE: 1:8				SHEET 1 OF 2

NOTE: UNLESS OTHERWISE SPECIFIED.

- BREAK AND DEBURR ALL SHARP EDGES 0.3mm
- REMOVE ALL WELD SPLATTER
- DIMENSIONS SHOWN ARE AFTER PAINTING
- PAINT BENDPAK BLUE

REVISION				
REV	DESCRIPTION	DATE	EDITED BY	ECO#
A	PRODUCTION RELEASE, DERIVED FROM T1193	02/03/2009	TM	00233
B	UPDATED BOM REVISIONS	09/22/2011	TM	00483
C	ADDED 6mm WELD TO 5215222	04/09/2013	TM	00598



ITEM NO	PART NUMBER	DESCRIPTION	QTY	REV
1	5735451	MD-6XP CROSS BAR	1	A
2	5766065	MD-6XP INNER ARM CROSS TUBE	1	A
3	5766068	MD-6XP INNER ARM TUBE	2	A
4	5731048	MD-6XP INNER ARM CONNECTOR	2	B
5	5735453	MD-6XP ARM EAR SUPPORT	4	A
6	5735452	MD-6XP CYLINDER BRACKET SUPPORT	2	A
7	5731047	MD-6XP CYLINDER BRACKET	4	A
8	5736176	MD-6XP SAFETY CLEVIS	2	A
9	5736224	MD-6XP TUBE END PLATE	2	A
10	5736225	MD-6XP ARM ROLLER EAR	4	A
11	5735028	PIN STOP	2	B
12	5215222	MD-6XP BUSHING ASSEMBLY	2	A

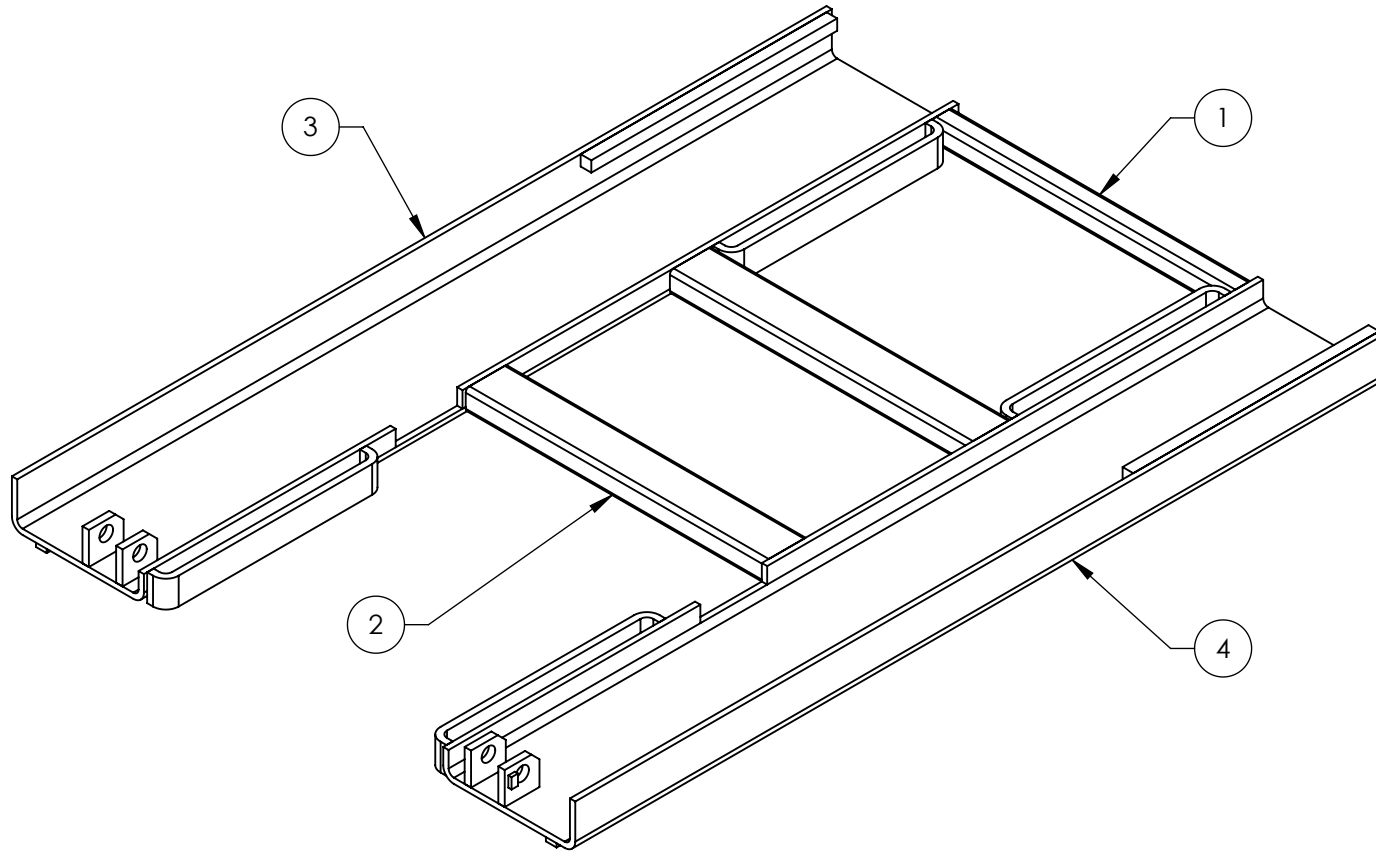
NOTE: UNLESS OTHERWISE SPECIFIED.

1. BREAK AND DEBURR ALL SHARP EDGES 0.3mm
2. REMOVE ALL WELD SPLATTER
3. DIMENSIONS SHOWN ARE AFTER PAINTING
4. PAINT BENDPAK BLUE


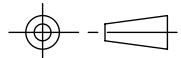
NEXT ASSEMBLY
5245128

DO NOT SCALE DRAWING		NAME	DATE	1645 LEMONWOOD DR. SANTA PAULA, CA 93060
DIMENSIONS ARE IN MM TOLERANCES: 0. = ±1.5 0.0 = ±0.5 ANGULAR: 0. = ±2° SURFACE FINISH 1.6 ISO Ra μm FOR MACHINED SURFACES UNLESS OTHERWISE SPECIFIED MATERIAL: -- SIZE: --		DRAWN	TM	
		CHECKED	MM	06/06/2013
		THIRD ANGLE PROJECTION		TITLE:
				MD-6XP INNER ARM WELDMENT
		PROPRIETARY AND CONFIDENTIAL THE INFORMATION CONTAINED IN THIS DRAWING IS THE SOLE PROPERTY OF BENDPAK INC. ANY REPRODUCTION IN PART OR AS A WHOLE WITHOUT THE WRITTEN PERMISSION OF BENDPAK INC. IS PROHIBITED.		SIZE DWG. NO.
		A 5600238		REV
		C		SCALE: 1:14
		SHEET 1 OF 3		

REVISION				
REV	DESCRIPTION	DATE	EDITED BY	ECO#
A	PRODUCTION RELEASE, DERIVED FROM T1196	02/04/2009	TM	00233
B	UPDATED BOM REVISIONS	11/08/2011	TM	00483
C	UPDATED BOM REVISIONS	04/09/2013	TM	00598



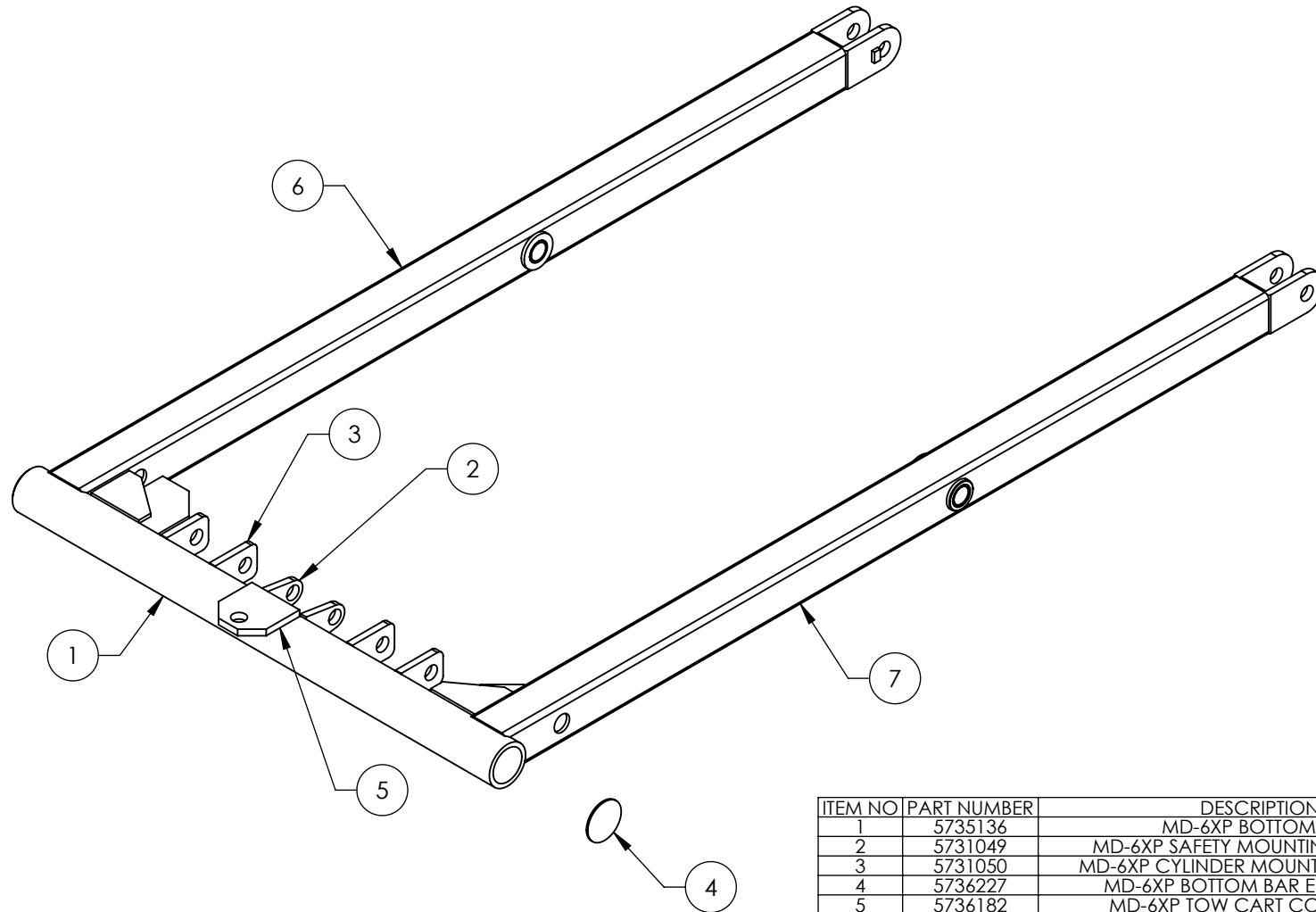
ITEM NO	PART NUMBER	DESCRIPTION	QTY	REV
1	5765024	MD-6XP COVER WELDMENT TIE-IN TUBE	1	A
2	5765025	MD-6XP COVER CROSS TUBE	2	A
3	5620298	MD-6XP RIGHT COVER WELDMENT	1	C
4	5620299	MD-6XP LEFT COVER RAMP WELDMENT	1	C

DO NOT SCALE DRAWING	NAME	DATE	 BendPak <small>PROVIDING AUTOMATIC SPINCE SOLUTIONS</small>	1645 LEMONWOOD DR. SANTA PAULA, CA 93060		
DIMENSIONS ARE IN MM TOLERANCES: 0. = ±1.5 0.0 = ±0.5	DRAWN	TM		02/04/2009	CHECKED	MM
ANGULAR: 0. = ±2°	THIRD ANGLE PROJECTION			TITLE: MD-6XP COVER WELDMENT		
SURFACE FINISH 1.6 ISO R _a μm FOR MACHINED SURFACES UNLESS OTHERWISE SPECIFIED				SIZE	DWG. NO.	REV
MATERIAL: -	<small>PROPRIETARY AND CONFIDENTIAL THE INFORMATION CONTAINED IN THIS DRAWING IS THE SOLE PROPERTY OF BENDPAK INC. ANY REPRODUCTION IN PART OR AS A WHOLE WITHOUT THE WRITTEN PERMISSION OF BENDPAK INC. IS PROHIBITED.</small>			A	5600239	C
SIZE: -	NEXT ASSEMBLY 5245128			SCALE: 1:10		SHEET 1 OF 2

NOTE: UNLESS OTHERWISE SPECIFIED.

1. BREAK AND DEBURR ALL SHARP EDGES 0.3mm
2. REMOVE ALL WELD SPLATTER
3. DIMENSIONS SHOWN ARE AFTER PAINTING
4. PAINT BENDPAK BLUE

REVISION				
REV	DESCRIPTION	DATE	EDITED BY	ECO#
A	PRODUCTION RELEASE, DERIVED FROM T1200	02/04/2009	TM	00233
B	UPDATED BOM REVISIONS	02/15/2013	TM	00579



ITEM NO	PART NUMBER	DESCRIPTION	QTY	REV
1	5735136	MD-6XP BOTTOM BAR	1	A
2	5731049	MD-6XP SAFETY MOUNTING BRACKET	2	A
3	5731050	MD-6XP CYLINDER MOUNTING BRACKET	4	A
4	5736227	MD-6XP BOTTOM BAR END COVER	2	A
5	5736182	MD-6XP TOW CART CONNECTOR	1	A
6	5620302	MD-6XP LEFT OUTER SCISSOR ARM WELDMENT	1	B
7	5620307	MD-6XP RIGHT OUTER SCISSOR ARM WELDMENT	1	B

DO NOT SCALE DRAWING	NAME	DATE	BendPak <small>PROVIDING AUTOMATIC SERVICE SOLUTIONS</small> 1645 LEMONWOOD DR. SANTA PAULA, CA 93060
DIMENSIONS ARE IN MM TOLERANCES: 0. = ±1.5 0.0 = ±0.5	DRAWN	TM 02/04/2009	
ANGULAR: 0. = ±2°	CHECKED	MM 02/18/2013	TITLE: MD-6XP OUTER ARM WELDMENT
SURFACE FINISH 1.6 ISO R _a μm FOR MACHINED SURFACES UNLESS OTHERWISE SPECIFIED	THIRD ANGLE PROJECTION		
MATERIAL: -			SIZE DWG. NO.
SIZE: -	PROPRIETARY AND CONFIDENTIAL THE INFORMATION CONTAINED IN THIS DRAWING IS THE SOLE PROPERTY OF BENDPAK INC. ANY REPRODUCTION IN PART OR AS A WHOLE WITHOUT THE WRITTEN PERMISSION OF BENDPAK INC. IS PROHIBITED.		REV
NEXT ASSEMBLY 5245128	A 5600240		B
SCALE: 1:10			SHEET 1 OF 3

NOTE: UNLESS OTHERWISE SPECIFIED.

1. BREAK AND DEBURR ALL SHARP EDGES 0.3mm
2. REMOVE ALL WELD SPLATTER
3. DIMENSIONS SHOWN ARE AFTER PAINTING
4. PAINT BENDPAK BLUE

PART SPECIFICATION FORM

BENDPAK Number:	5900108
MRP Description:	MD-6XP INSTALLATION MANUAL
Date:	07/23/2013
ECO :	00611

1. Engineering Specification

Application:

INSTALLATION MANUAL

Detailed Description:


WARNING

CAUTION
The safe operating temperature range for this product is 41°F - 104°F.


PLEASE READ THE ENTIRE CONTENTS OF THIS MANUAL PRIOR TO INSTALLATION AND OPERATION. BY PROCEEDING YOU AGREE THAT YOU FULLY UNDERSTAND AND COMPREHEND THE FULL CONTENTS OF THIS MANUAL. FORWARD THIS MANUAL TO ALL OPERATORS. FAILURE TO OPERATE THIS EQUIPMENT AS DIRECTED MAY CAUSE INJURY OR DEATH.

REV E 08-08-2012
pn 5900108

INSTALLATION AND OPERATION MANUAL
6,000 POUND CAPACITY
PORTABLE MID RISE LIFT
MODEL: MD-6XP



READ FIRST




Do not operate this machine until you read and understand all the warnings, notices and cautions in this manual.

Keep this operation manual near the machine at all times. Make sure that **ALL USERS** read this manual.

SHIPPING DAMAGE CLAIMS
When this equipment is shipped, title passes to the purchaser upon receipt from the carrier. Consequently, claims for the material damaged in shipment must be made by the purchaser against the transportation company at the time shipment is received.

BE SAFE
Your new lift was designed and built with safety in mind. However, your overall safety can be increased by proper training and thoughtful operation on the part of the operator. **DO NOT** operate or repair this equipment without reading this manual and the important safety instructions shown inside.



1645 Lemonwood Dr.
Santa Paula, CA. 93060, USA
Toll Free: 1-800-253-2363
Tel: 1-805-933-9970
Fax: 1-805-933-9160
www.bendpak.com

2. Vendor Information

Approved Vendor	Vendor Part #	Contact #	Preferred Vendor
1)			

PART SPECIFICATION FORM

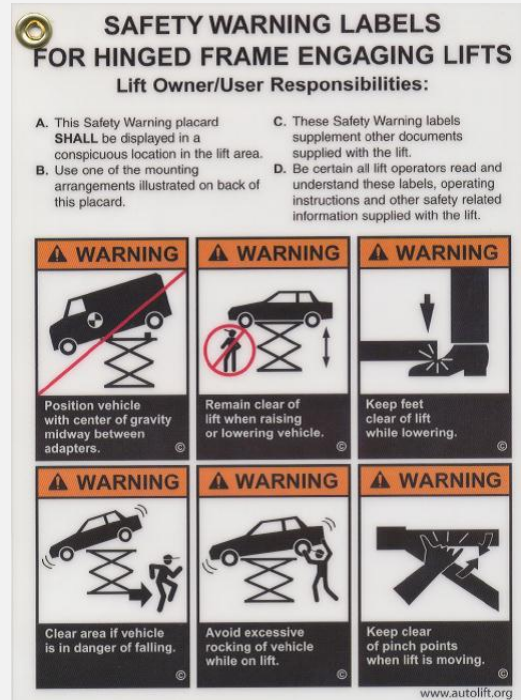
BENDPAK Number:	5905135
MRP Description:	CAUTION ALI/WL 300CSW
Date:	12/28/2010
ECO :	00431

1. Engineering Specification

Application:

ALI SCISSOR LIFT STICKER

Detailed Description:



2. Vendor Information

Approved Vendor	Vendor Part #	Contact #	Preferred Vendor
1)			

PART SPECIFICATION FORM

BENDPAK Number:	5905176
MRP Description:	WARNING TO PROLONG LIFE
Date:	10/24/2014
ECO :	00654

1. Engineering Specification	
<u>Application:</u>	SCISSOR CYLINDER WARNING
<u>Detailed Description:</u>	<div style="display: flex; align-items: flex-start;"> <div style="border: 2px solid red; padding: 10px; margin-right: 20px; width: 30%;"> <p style="text-align: center; font-weight: bold; font-size: 1.2em; margin: 0;">WARNING!</p> <p style="text-align: center; font-weight: bold; font-size: 1.1em; margin: 0;">VERY IMPORTANT</p> <p style="text-align: center; font-weight: bold; font-size: 0.8em; margin: 0;">TO PROLONG LIFE EXPECTANCY OF CYLINDER SEALS AND PREVENT PREMATURE LEAKAGE AND WEAR, RAISE LIFT TO FULL HEIGHT AT LEAST ONCE A DAY. ALSO, THIS IS AN EFFECTIVE WAY TO BLEED ANY TRAPPED AIR AND MAINTAIN EQUAL LIFTING OF THE SYSTEM.</p> <p style="text-align: center; font-size: 0.7em; margin: 0;">PN 5930176</p> </div> <div style="flex-grow: 1;"> <p><u>SIZE:</u> 3" L x 3" W (76mm x 76mm)</p> <ul style="list-style-type: none"> Material: White Vinyl Pressure Sensitive Adhesive Thickness: 4 Mil Ink: U.V. protected CMYK 2/C Process Finish: Polished Print Process: Offset Lithography - 200 line-screen or 300 p.p.i. for digital Lamination: Clear-gloss over-laminate for abrasion, chemical, and ultra violet protection </div> </div>

2. Vendor Information			
Approved Vendor	Vendor Part #	Contact #	Preferred Vendor
1)			

WARNING!

VERY IMPORTANT


**TO PROLONG LIFE EXPECTANCY
OF CYLINDER SEALS AND
PREVENT PREMATURE LEAKAGE
AND WEAR, RAISE LIFT TO FULL
HEIGHT AT LEAST ONCE A DAY.**

**ALSO, THIS IS AN EFFECTIVE
WAY TO BLEED ANY TRAPPED
AIR AND MAINTAIN EQUAL
LIFTING OF THE SYSTEM.**

PN 5930176

PART SPECIFICATION FORM

BENDPAK Number:	5905204
MRP Description:	BENDPAK LABEL
Date:	09/16/2015
ECO :	00715

1. Engineering Specification
<p><u>Application:</u> BENDPAK LABEL</p>
<p><u>Detailed Description:</u></p> <div style="text-align: center;">  </div> <p><u>Material:</u> Clear Adhesive PET <u>Size:</u> 16"W x 3"H <u>Thickness:</u> 4 Mil <u>Finish:</u> Polished <u>Ink:</u> U.V. protected, Opaque White <u>Print Process:</u> Silk Screen, 85 line-screen (YELLOW color in file represents what should be clear PET material and SHOULD NOT print as YELLOW ink. White area in file represents Opaque White ink.) <u>Lamination:</u> Clear-gloss over-laminate for abrasion, chemical, and ultra violet protection</p>

2. Vendor Information			
Approved Vendor	Vendor Part #	Contact #	Preferred Vendor
1)			

BPD


BendPak®

PROVIDING AUTOMOTIVE SERVICE SOLUTIONS

1645 Lemonwood Dr., Santa Paula, CA 93060 • TEL: 805-933-9970 • www.bendpak.com • ENGINEERED BY BENDPAK USA • MADE IN CHINA

PART SPECIFICATION FORM

BENDPAK Number:	5905285
MRP Description:	SERIALTAG EXTERIOR PEEL OFF INVENTORY LABEL
Date:	04/20/2016
ECO :	00739

1. Engineering Specification									
Application: DATA SERIAL TAG									
Detailed Description:									
<div style="border: 2px solid black; padding: 10px;">  BendPak Santa Paula, CA USA www.bendpak.com </div> <div style="margin-top: 10px;"> <table border="1" style="width: 100%; border-collapse: collapse;"> <tr style="background-color: black; color: white;"> <th style="padding: 2px;">MODEL NUMBER</th> </tr> <tr> <td style="height: 20px;"></td> </tr> <tr style="background-color: black; color: white;"> <th style="padding: 2px;">SERIAL NUMBER</th> </tr> <tr> <td style="height: 20px;"></td> </tr> </table> </div> <div style="text-align: right; margin-top: 5px;">PN 5905285</div> <div style="margin-top: 10px;"> <p style="font-weight: bold; font-size: 1.2em;">PEEL OFF INVENTORY LABEL</p> <table border="1" style="width: 100%; border-collapse: collapse;"> <tr style="background-color: black; color: white;"> <th style="padding: 2px;">MODEL NUMBER</th> </tr> <tr> <td style="height: 20px;"></td> </tr> <tr style="background-color: black; color: white;"> <th style="padding: 2px;">SERIAL NUMBER</th> </tr> <tr> <td style="height: 20px;"></td> </tr> </table> </div>	MODEL NUMBER		SERIAL NUMBER		MODEL NUMBER		SERIAL NUMBER		<p><u>SIZE:</u> 3" L x 3" W (76mm x 76mm)</p>
MODEL NUMBER									
SERIAL NUMBER									
MODEL NUMBER									
SERIAL NUMBER									

2. Vendor Information			
Approved Vendor	Vendor Part #	Contact #	Preferred Vendor
1)			



BendPak[®]
PROVIDING AUTOMOTIVE SERVICE SOLUTIONS

Santa Paula, CA USA
www.bendpak.com

MODEL NUMBER

SERIAL NUMBER



PN 5905285

PEEL OFF INVENTORY LABEL

MODEL NUMBER

SERIAL NUMBER

PART SPECIFICATION FORM

BENDPAK Number:	5905465
MRP Description:	MANUFACTURER LABEL
Date:	05/07/2013
ECO :	00593

1. Engineering Specification

Application:

MANUFACTURER LABEL

Detailed Description:

MFD. BY BENDPAK INC.

LIFT TYPE: SURFACE MOUNT CAPACITY: MED/HVY DTY
 POWER: ELECTRIC/HYDRAULIC ANCHORS: AS EQUIPPED
 INSTALLATION – SEE OWNERS GUIDE OR CONTACT FACTORY

SIZE: 5.125" L x 5.125" W (130mm x 130mm)

SHIPPING DAMAGE CLAIMS
 WHEN THIS EQUIPMENT IS SHIPPED, TITLE PASSES TO THE PURCHASER UPON RECEIPT FROM THE CARRIER. CONSEQUENTLY, CLAIMS FOR THE MATERIAL DAMAGED IN SHIPMENT MUST BE MADE BY THE PURCHASER AGAINST THE TRANSPORTATION COMPANY AT THE TIME SHIPMENT IS RECEIVED.

PLEASE READ ALL OPERATORS/USERS MANUAL(S) PRIOR TO INSTALLATION AND OPERATION. UNDERSTAND AND COMPREHEND THE FULL CONTENTS OF EACH MANUAL(S) PRIOR TO INSTALLATION AND OPERATION. DELIVER THE MANUAL(S) TO ALL OPERATORS. FAILURE TO OPERATE THIS EQUIPMENT AS DIRECTED MAY CAUSE INJURY OR DEATH.

IMPORTANT NOTE:
 BENDPAK LIFTS ARE SUPPLIED WITH CONCRETE FASTENERS MEETING THE CRITERIA AS PRESCRIBED BY ASTM E488 – 96(2003). LIFT BUYERS ARE RESPONSIBLE FOR ANY SPECIAL REGIONAL STRUCTURAL AND/OR SEISMIC ANCHORING REQUIREMENTS SPECIFIED BY ANY OTHER AGENCIES AND/OR CODES SUCH AS THE UNIFORM BUILDING CODE (UBC) AND/OR INTERNATIONAL BUILDING CODE (IBC).



INTERNAL BAR CODE – FOR FACTORY AUDIT ONLY 34086

BPK	STYOT	P20KVR	X18576	HVY DTY/ GVR	832
-----	-------	--------	--------	--------------	-----

THE MANUFACTURE, USE, SALE OR IMPORT OF THIS PRODUCT MAY BE SUBJECT TO ONE OR MORE UNITED STATES PATENTS, OR PENDING APPLICATIONS, OWNED BY BENDPAK, INC.

ENGINEERED BY BENDPAK INC USA MADE IN CHINA

2. Vendor Information

Approved Vendor	Vendor Part #	Contact #	Preferred Vendor
1)			

MFD. BY BENDPAK INC.

LIFT TYPE: SURFACE MOUNT

CAPACITY: MED/HVY DTY

POWER: ELECTRIC/HYDRAULIC

ANCHORS: AS EQUIPPED

INSTALLATION - SEE OWNERS GUIDE OR CONTACT FACTORY

SHIPPING DAMAGE CLAIMS

WHEN THIS EQUIPMENT IS SHIPPED, TITLE PASSES TO THE PURCHASER UPON RECEIPT FROM THE CARRIER. CONSEQUENTLY, CLAIMS FOR THE MATERIAL DAMAGED IN SHIPMENT MUST BE MADE BY THE PURCHASER AGAINST THE TRANSPORTATION COMPANY AT THE TIME SHIPMENT IS RECEIVED.

PLEASE READ ALL OPERATORS/USERS MANUAL(S) PRIOR TO INSTALLATION AND OPERATION. UNDERSTAND AND COMPREHEND THE FULL CONTENTS OF EACH MANUAL(S) PRIOR TO INSTALLATION AND OPERATION. DELIVER THE MANUAL(S) TO ALL OPERATORS. FAILURE TO OPERATE THIS EQUIPMENT AS DIRECTED MAY CAUSE INJURY OR DEATH.

IMPORTANT NOTE:

BENDPAK LIFTS ARE SUPPLIED WITH CONCRETE FASTENERS MEETING THE CRITERIA AS PRESCRIBED BY ASTM E488 - 96(2003). LIFT BUYERS ARE RESPONSIBLE FOR ANY SPECIAL REGIONAL STRUCTURAL AND/OR SEISMIC ANCHORING REQUIREMENTS SPECIFIED BY ANY OTHER AGENCIES AND/OR CODES SUCH AS THE UNIFORM BUILDING CODE (UBC) AND/OR INTERNATIONAL BUILDING CODE (IBC).



INTERNAL BAR CODE - FOR FACTORY AUDIT ONLY 34086

BPK

STYOT

P20KVR

X18576

HVY DTY/ GVR
832

THE MANUFACTURE, USE, SALE OR IMPORT OF THIS PRODUCT MAY BE SUBJECT TO ONE OR MORE UNITED STATES PATENTS, OR PENDING APPLICATIONS, OWNED BY BENDPAK, INC.

ENGINEERED BY BENDPAK INC USA

MADE IN CHINA

PART SPECIFICATION FORM

BENDPAK Number:	5905576
MRP Description:	LABEL; MD-6XP WARNING DRIVE CAR OVER LIFT & CYLINDER SEALS LIFE EXPENTANCY
Date:	04/28/2016
ECO :	00746

1. Engineering Specification

Application:
HAZARD STICKER

Detailed Description:

Size: 3.5"W x 8.75"H
 Material: White Vinyl Pressure Sensitive Adhesive
 Thickness: 4 Mil
 Ink: U.V. protected CMYK 2/C Process
 Finish: Polished
 Print Process: Offset Lithography - 200 line-screen or 300 p.p.i. for digital
 Lamination: Clear-gloss over-laminate for abrasion, chemical, and ultra violet protection



2. Vendor Information

Approved Vendor	Vendor Part #	Contact #	Preferred Vendor
1)			

⚠️ WARNING

Maximum Lifting Capacity 6,000 lbs. / 2722 kg

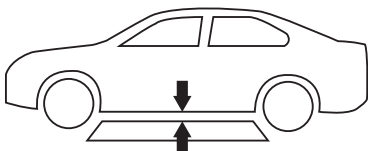
**FAILURE TO READ AND UNDERSTAND THE FOLLOWING WARNINGS
MAY RESULT IN PERSONAL INJURY AND/OR PROPERTY DAMAGE.
KEEP HANDS AND FEET CLEAR FROM MOVING PARTS.**

**Read and understand entire contents of operation manual and
warnings below before operating this equipment.**

- ✓ Never exceed the rated capacity of the lift
- ✓ Do not operate the lift if any component is found to be defective or worn
- ✓ Never operate lift with any person or equipment below
- ✓ Always ensure load is centered and stable prior to operating controls
- ✓ When lowering the lift pay careful attention that all personnel and objects are kept clear.
- ✓ Always keep a visual line of site on the lift during operation
- ✓ Always stand clear of lift when lowering or raising
- ✓ Never leave lift in elevated position unless safety lock is engaged in the **LOCKED** position
- ✓ Keep all body parts and objects away from pinch points when lift is in motion
- ✓ Use on level concrete in good condition and free of cracks or other defects
- ✓ Visually confirm safety lock is properly engaged before working on or near lift

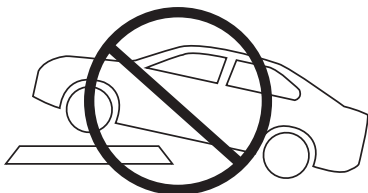
⚠️ WARNING

Drive car completely over lift



NEVER OVERLOAD LIFT

Check for 1" minimum clearance
between car and lift before raising.



DO NOT park on or load lift in a
fully lowered position or damage may result.

⚠️ WARNING

VERY IMPORTANT

**TO PROLONG LIFE EXPECTANCY OF CYLINDER SEALS AND
PREVENT PREMATURE LEAKAGE AND WEAR, RAISE LIFT
TO FULL HEIGHT AT LEAST ONCE A DAY. ALSO, THIS IS AN
EFFECTIVE WAY TO BLEED ANY TRAPPED AIR AND MAINTAIN
EQUAL LIFTING OF THE SYSTEM.**

PN 5905576

PART SPECIFICATION FORM

BENDPAK Number:	5905577
MRP Description:	LABEL; MD-6XP OPERATION WARNING; OPERATION INSTRUCTIONS & SAFETY LOCKED POSITION
Date:	04/28/2016
ECO :	00746

1. Engineering Specification

Application:
HAZARD STICKER

Detailed Description:
 Size: 3.5"W x 8.75"H
 Material: White Vinyl Pressure Sensitive Adhesive
 Thickness: 4 Mil
 Ink: U.V. protected CMYK 2/C Process
 Finish: Polished
 Print Process: Offset Lithography - 200 line-screen or 300 p.p.i. for digital
 Lamination: Clear-gloss over-laminate for abrasion, chemical, and ultra violet protection



2. Vendor Information

Approved Vendor	Vendor Part #	Contact #	Preferred Vendor
1)			

! WARNING

Read and understand all safety warning and operation procedures before using lift.
Keep hands and feet clear from moving parts.

OPERATION INSTRUCTIONS

TO RAISE LIFT:

- Clear area of personnel and make sure lift is in full lowered position.
- Drive vehicle over lift making sure center line of the vehicle is positioned properly over lift pads.
- Position lift pads underneath the vehicle making sure that they make secure contact with the factory recommended lifting points.
- Before raising, make sure the weight of the vehicle does not exceed rated capacity of lift.
- Push the **RAISE** button to commence lifting.
- Raise lift until the vehicles tires clear the floor.
- Stop then check if vehicle is secure and the lifting pads are still in contact with the frame.
- Continue raising vehicle to desired height.
- Raise until the safety lock bars drop into the **LOCKED** position as described on *Fig. A*
- Raise the lift to the desired height then lower the lift until the **LOCK BARS** rests against the **LOCK BLOCK**.

TO LOWER LIFT:

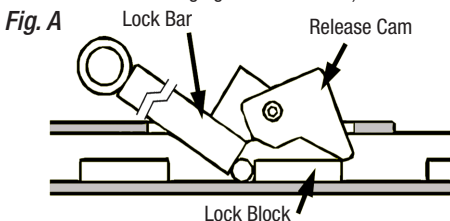
- Clear area before lowering lift.
- Raise the lift until the release cam drops into the **UNLOCKED** position as described on *Fig. B*
- Push the **LOWERING** handle until the lift starts to descend. Stay clear of lift area.
- Fully lower the lift and remove all lifting adapters before driving vehicle away.

! WARNING

ALWAYS ensure that the safety is in **LOCKED** position before any attempt is made to work on or near the vehicle.

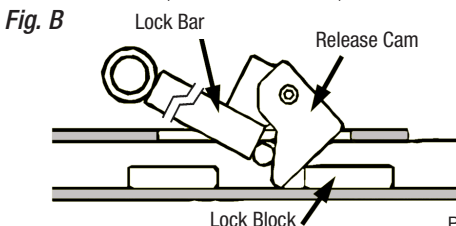
SAFETY IN LOCKED POSITION

(Release cam raised Lock Bar resting against Lock Block)




SAFETY IN UNLOCKED POSITION

(Release cam lowered)



PART SPECIFICATION FORM

BENDPAK Number:	5905583
MRP Description:	DECAL; HAZARD LONG ON LIFT AND RIGHT SIDE OF THE PLATFORMS
Date:	04/28/2016
ECO :	00746

1. Engineering Specification
<u>Application:</u> HAZARD STICKER
<u>Detailed Description:</u> Material: Clear Adhesive PET Size: 24"W x 2"H Thickness: 4 Mil Finish: Polished Ink: U.V. protected, Opaque White Lamination: Clear-gloss over-laminate for abrasion, chemical, and ultra violet protection


2. Vendor Information			
Approved Vendor	Vendor Part #	Contact #	Preferred Vendor
1)			



PART SPECIFICATION FORM

BENDPAK Number:	5905940
MRP Description:	PRODUCT DATA LABEL
Date:	05/06/2013
ECO :	00593

1. Engineering Specification

Application:

PRODUCT DATA LABEL

Detailed Description:

	SANTA PAULA, CA USA WWW.BENDPAK.COM
LIFT TYPE: SURFACE MOUNT CAP: MED/HVY DTY MFG. BPK SEE DATA PLATE FOR PRODUCT DETAILS POWER: ELECTRIC/HYDRAULIC INSTALLATION - SEE OWNERS GUIDE OR CONTACT FACTORY	
<p>SAFETY INSTRUCTIONS: IF ATTACHMENTS, ACCESSORIES OR CONFIGURATION MODIFYING COMPONENTS THAT ARE LOCATED IN THE LOAD PATH, AFFECT OPERATION OF THE LIFT, AFFECT THE LIFT ELECTRICAL LISTING OR AFFECT INTENDED VEHICLE ACCOMMODATION ARE USED ON THIS LIFT AND, IF THEY ARE NOT CERTIFIED FOR USE ON THIS LIFT, THEN THE CERTIFICATION OF THIS LIFT SHALL BECOME NULL AND VOID. CONTACT THE PARTICIPANT FOR INFORMATION PERTAINING TO CERTIFIED ATTACHMENTS, ACCESSORIES OR CONFIGURATION MODIFYING COMPONENTS.</p> <p>BENDPAK LIFTS ARE SUPPLIED WITH CONCRETE FASTENERS MEETING THE CRITERIA AS PRESCRIBED BY ASTM E488 - 96(2003). LIFT BUYERS ARE RESPONSIBLE FOR ANY SPECIAL REGIONAL STRUCTURAL AND/OR SEISMIC ANCHORING REQUIREMENTS SPECIFIED BY ANY OTHER AGENCIES AND/OR CODES SUCH AS THE UNIFORM BUILDING CODE (UBC) AND/OR INTERNATIONAL BUILDING CODE (IBC).</p> <p>THE MANUFACTURE, USE, SALE OR IMPORT OF THIS PRODUCT MAY BE SUBJECT TO ONE OR MORE UNITED STATES PATENTS, OR PENDING APPLICATIONS, OWNED BY BENDPAK, INC. DO NOT REMOVE ENGINEERED BY BENDPAK INC. USA MADE IN CHINA</p>	

SIZE: 2.3" L x 4.5" W (58mm x 114mm)

2. Vendor Information

Approved Vendor	Vendor Part #	Contact #	Preferred Vendor
1)			



SANTA PAULA, CA USA
WWW.BENDPAK.COM
PN 5905940

LIFT TYPE: SURFACE MOUNT CAP: MED/HVY DTY MFG. BPK SEE DATA PLATE FOR PRODUCT DETAILS
POWER: ELECTRIC/HYDRAULIC INSTALLATION - SEE OWNERS GUIDE OR CONTACT FACTORY

SAFETY INSTRUCTIONS: IF ATTACHMENTS, ACCESSORIES OR CONFIGURATION MODIFYING COMPONENTS THAT ARE LOCATED IN THE LOAD PATH, AFFECT OPERATION OF THE LIFT, AFFECT THE LIFT ELECTRICAL LISTING OR AFFECT INTENDED VEHICLE ACCOMMODATION ARE USED ON THIS LIFT AND, IF THEY ARE NOT CERTIFIED FOR USE ON THIS LIFT, THEN THE CERTIFICATION OF THIS LIFT SHALL BECOME NULL AND VOID. CONTACT THE PARTICIPANT FOR INFORMATION PERTAINING TO CERTIFIED ATTACHMENTS, ACCESSORIES OR CONFIGURATION MODIFYING COMPONENTS.

BENDPAK LIFTS ARE SUPPLIED WITH CONCRETE FASTENERS MEETING THE CRITERIA AS PRESCRIBED BY ASTM E488 - 96(2003). LIFT BUYERS ARE RESPONSIBLE FOR ANY SPECIAL REGIONAL STRUCTURAL AND/OR SEISMIC ANCHORING REQUIREMENTS SPECIFIED BY ANY OTHER AGENCIES AND/OR CODES SUCH AS THE UNIFORM BUILDING CODE (UBC) AND/OR INTERNATIONAL BUILDING CODE (IBC).

THE MANUFACTURE, USE, SALE OR IMPORT OF THIS PRODUCT MAY BE SUBJECT TO ONE OR MORE UNITED STATES PATENTS, OR PENDING APPLICATIONS, OWNED BY BENDPAK, INC.

DO NOT REMOVE

ENGINEERED BY BENDPAK INC. USA

MADE IN CHINA

PART SPECIFICATION FORM

BENDPAK Number:	5905951
MRP Description:	2015_SERIAL_TAG-B-5905951
Date:	07/19/2016
ECO :	00752

1. Engineering Specification

Application:

DATA SERIAL TAG

Detailed Description:

SIZE: 3" L x 3" W (76.2mm x 76.2mm)

BP BendPak		Santa Paula, CA USA www.bendpak.com
MODEL NUMBER		
SERIAL NUMBER		
LIFT CAPACITY	DESCRIPTION	
VOLTAGE		
<input type="checkbox"/> 110-240VAC, 50-60 Hz, 1 Ph	<input type="checkbox"/> 380-415VAC, 50-60 Hz, 3 Ph	
<input type="checkbox"/> 208-240VAC, 50-60 Hz, 1 Ph	<input type="checkbox"/> 208-440VAC, 50-60 Hz, 3 Ph	
DATE OF MFG.		
DANGER! Disconnect Power Before Servicing <small>WARRANTY VOID IF DATA PLATE IS REMOVED PN 5905951</small>		
ERC		

2. Vendor Information (Or for Reference)

Approved Vendor	Vendor Part #	Contact #	Preferred Vendor
1)			
2)			
OR BENDPAK ENGINEERING APPROVED EQUIVALENT			

MODEL NUMBER**SERIAL NUMBER****LIFT CAPACITY****DESCRIPTION****VOLTAGE** 110-240VAC, 50-60 Hz, 1 Ph 380-415VAC, 50-60 Hz, 3 Ph 208-240VAC, 50-60 Hz, 1 Ph 208-440VAC, 50-60 Hz, 3 Ph**DATE OF MFG.****DANGER!**Disconnect Power
Before Servicing**EAC**

WARRANTY VOID IF DATA PLATE IS REMOVED PN 5905951



QCR: 346

MD-6XP Packaging

The following is to show how to package a MD-6XP. Please follow these instructions. The lift will be stacked 5 high, each with their own box and on their own pallet. All power unit stands will be shipped separate on their own frame.

Report taken by: Adam Roberts
Date: 10/20/15



Shown is the MD-6XP sitting in the bottom section of a cardboard box. The lift and the box are on top of a pallet of correct length and width (43" x 86" x 5").



Each of the 4 arms are to be individually wrapped in cardboard as shown



Also, arms will be bolted on to the frame for shipping.



Shown is how the arm will be bolted on to the lift frame with a washer and nut.



Note: cylinders, all pins, safety assembly, fittings, hose between cylinders and rear rollers are all pre-installed.



A small parts box containing the 4 M8 bolts, washers and nuts, the 3660mm hose and FTG ELB -04 JIC -06 ORB fitting will be placed under the bolted on arms. Also the 4 lift pads will also be placed under the arms.



The small parts box will have a parts check list added to the top. This check list is to be filled out as each item is placed in the box.



Shown is the parts box with the lift pads location under the arms.





A larger parts box will contain 4 slip on lift pads, 4 slip on lift pad extensions, 4 lift pad extensions, the installation manual, as well as the 4 SHCS M12 bolts in a plastic bag.

Note: the parts box should not exceed the highest point of the lift.



The large parts box will have a parts check list added to the top. This check list is to be filled out as each item is placed in the box.



Here is the final position for all parts. Large parts box is in the center lift pads and small parts box are under the arms. The arms are secured to the frame with 2 straps.



There are 2 structure supports that will need to be added to increase the strength of the packaging. They are of simple construction and will be positioned as shown.



Here are the 2 supports before placed inside the box



The top box is then placed over the bottom box; this should be a tight fit.



The top box will be secured with 3 Steel straps as shown



The Lift will have a parts check list added to both short sides as shown. This check list is to be filled out as each item is added to the lift.



The power unit stand should be fully wrapped in cardboard like shown.



They will be placed in a metal frame; there should be one stand per lift. This packaging will need to be secured with steel straps and wrapped in plastic.

MD-6XP Large Parts Box			
Part Number	Description	Quantity	Actual
5215523	MD-6XP/RJ-45 SHORT ROUND LIFT PAD ASSEMBLY	4	
5600257	MD-6XP/RJ-45 LIFT PAD WELDMENT BASE	4	
5746390	GP/XPR/RJ/MD-6XP MEDIUM LIFT PAD EXTENSION (113mm LG)	4	
5900108	MD-6XP INSTALLATION MANUAL	1	
5530336	SHCS M12 x 1.75 x 20	4	

MD-6XP Structure			
Part Number	Description	Quantity	Actual
5245128	MD-6XP LIFT SUPERSTRUCTURE	1	
	MD-6XP large parts box	1	
	MD-6XP small parts box	1	
5215264	MD-6XP LIFT ARM ASSEMBLY	4	
5550086	FTG ELB-04 NPT x -04 JIC	2	
5550145	FTG PLG -04 NPT	1	
5550147	FTG NPL -04 JIC x -04 NPT	1	
5570054	LR-60/60P, MD-6XP HYD HOSE ASSEMBLY Ø6.4 x 540mm DS	1	
5905135	CAUTION ALI/WL 300CSW	1	
5905204	BENDPAK LABEL	2	
5905465	MANUFACTURER LABEL	1	
5905940	PRODUCT DATA LABEL	1	
5905150	SERIAL NUMBER INTERIOR TAG PLATE	1	
5905240	WARNING TO RAISE LIFT	1	
5905176	WARNING TO PROLONG LIFE	1	
5905760	SCISSOR OVERLOADING WARNING	1	
5215507	ROUND LIFT PAD ADAPTER ASSEMBLY	4	

MD-6XP Small Parts Box			
Part Number	Description	Quantity	Actual
5570013	HD-14LS/MD-6XP HOSE ASSY Ø6.4 x 3660mm	1	
5550103	FTG ELB -04 JIC -06 ORB	1	
5535001	NUT M8 x 1.25 NL	4	
5545202	WASHER M8 x Ø15 SL	4	
5530304	HHB M8 x 1.25 x 20	4	



2015
MD-6XP
Packaging Label Placement
Colors & Graphics

12/4/15

CONFIDENTIAL INFORMATION.

You may not disclose, print, copy or disseminate this information.
Unauthorized use is a violation of federal criminal law.

MD-6XP Packaging Label Positioning

A

BendPak. Mid-Rise Car Lift
MD-6XP

6,000 Lb. CAPACITY

- ✓ Perfect for servicing light-duty trucks and cars
- ✓ Portable motor cart serves as tow handle to easily move lift from bay to bay
- ✓ Adjustable arm assemblies
- ✓ Safety lock bar with multiple lock positions
- ✓ Fast and efficient operation
- ✓ Lifting height: 48" / 1,219
- ✓ Minimum pad height: 4-3/4" / 121 mm.
- ✓ Lifting time: 45 sec
- ✓ Motor: 110-220 VAC / 60 Hz. / 1Ph

ANSI CE

1645 Lennoxwood Drive • Santa Paula, CA 93060 • TEL: 1-805-933-9970 • www.bendpak.com ENGINEERED BY BENDPAK USA • MADE IN CHINA

MD-6XP_Packaging_Label:

Trim: 5"W x 8.5"H

Material: White Adhesive Paper

Ink: U.V. protected CMYK 4/C Process

Print Process: Offset Lithography - 200 line-screen or 300 p.p.i. for digital

B

BendPak. Santa Paula, CA USA
www.bendpak.com

MODEL NUMBER SERIAL NUMBER

PN 5905285

PEEL OFF INVENTORY LABEL

MODEL NUMBER SERIAL NUMBER

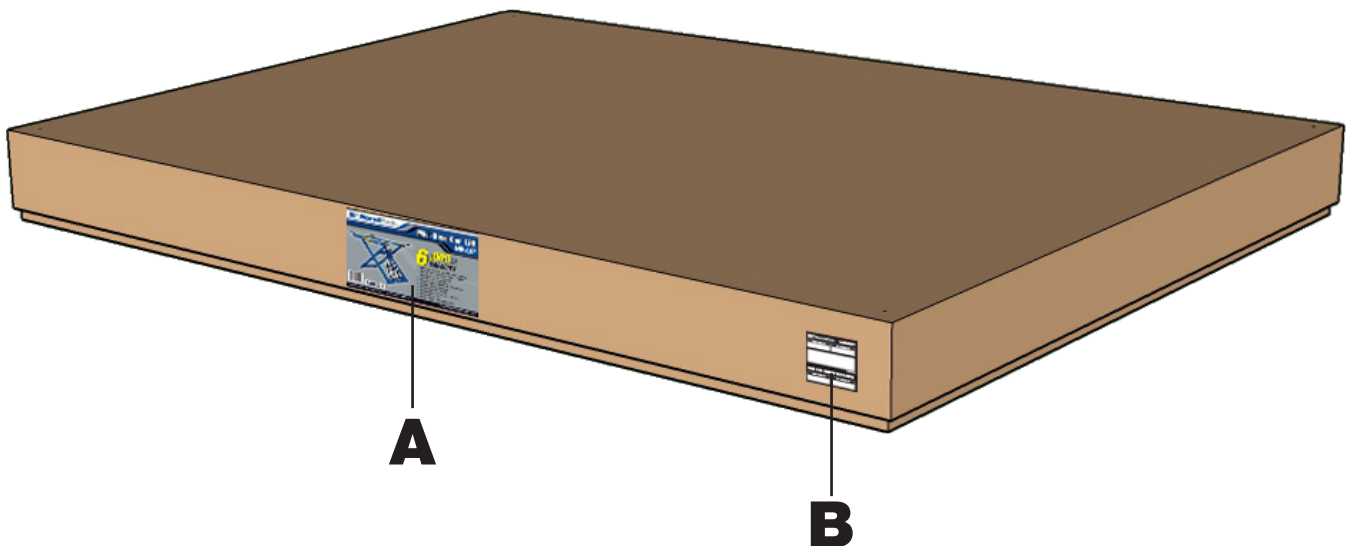
Serial_Tag_New-2015_Peel_Off-5905285.pdf:

Size: 3"W x 3"H

Material: 2 Mil. Gloss polyester thermal transfer label with a high performance permanent acrylic adhesive.

Ink: 1 Color-Black

PN 5905285



PART SPECIFICATION FORM

BENDPAK Number:	5905966
MRP Description:	MD-6XP_Packaging_Label
Date:	12/30/2015
ECO :	00736

1. Engineering Specification

Application:
 PACKAGING LABEL

Detailed Description:

SIZE: 5" (127mm) W x 8.5" (216mm) H

- Material: White Adhesive Paper
- Ink: U.V. protected CMYK 4/C Process
- Print Process: Offset Lithography - 200 line-screen or 300 p.p.i. for digital



2. Vendor Information (Or for Reference)

Approved Vendor	Vendor Part #	Contact #	Preferred Vendor
1)			
2)			
OR BENDPAK ENGINEERING APPROVED EQUIVALENT			

BP BendPak

Mid-Rise Car Lift

MD-6XP



6,000 Lb.

CAPACITY

- ✓ Perfect for servicing light-duty trucks and cars
- ✓ Portable motor cart serves as tow handle to easily move lift from bay to bay
- ✓ Adjustable arm assemblies
- ✓ Safety lock bar with multiple lock positions
- ✓ Fast and efficient operation
- ✓ Lifting height: 48" / 1,219
- ✓ Minimum pad height: 4-3/4" / 121 mm.
- ✓ Lifting time: 45 sec
- ✓ Motor: 110-220 VAC / 60 Hz. / 1Ph



ANSI

CE



2016
MD-6XP
Mid-Rise Scissor Lift
Colors & Graphics

4/28/16

CONFIDENTIAL INFORMATION.

You may not disclose, print, copy or disseminate this information.
Unauthorized use is a violation of federal criminal law.

MD-6XP Product Decal Positioning

A



MD-6XP_BendPak_Cylinder_Decal.pdf:

Material: Clear Adhesive PET

Size: 16"W x 3"H

Thickness: 4 Mil

Finish: Polished

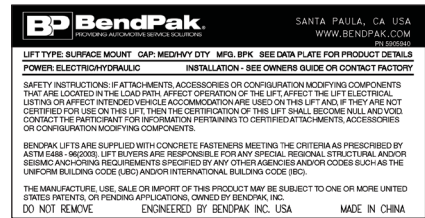
Ink: U.V. protected, Opaque White

Print Process: Silk Screen, 85 line-screen (Yellow color in file represents what should be clear PET material and SHOULD NOT print as Yellow ink. White area in file represents Opaque White ink.)

Lamination: Clear-gloss over-laminate for abrasion, chemical, and ultra violet protection

Clear PET material and SHOULD NOT print as Yellow

B



PN 5905940

Product Data Label 5905940-New.pdf:

Size: 4.5"W x 2.3"H

Material: White Vinyl Pressure Sensitive Adhesive

Thickness: 4 Mil

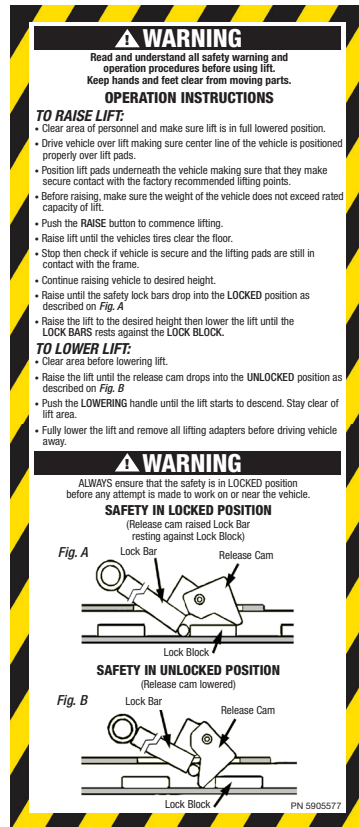
Ink: U.V. protected CMYK 2/C Process

Finish: Polished

Print Process: Offset Lithography - 200 line-screen or 300 p.p.i. for digital

Lamination: Clear-gloss over-laminate for abrasion, chemical, and ultra violet protection

C



PN 5905577

Warning_Operation_Inst_Label_5905577.pdf:

Size: 3.5"W x 8.25"H

Material: White Vinyl Pressure Sensitive Adhesive

Thickness: 4 Mil

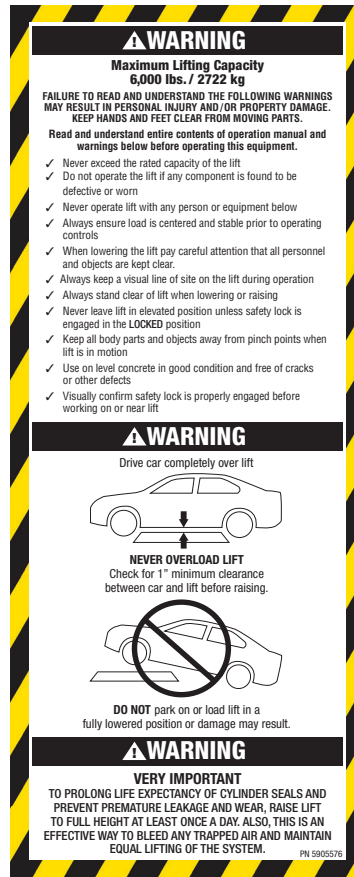
Ink: U.V. protected CMYK 2/C Process

Finish: Polished

Print Process: Offset Lithography - 200 line-screen or 300 p.p.i. for digital

Lamination: Clear-gloss over-laminate for abrasion, chemical, and ultra violet protection

D



PN 5905576

Warning_Drive_Car_Over_Label_5905576.pdf:

Size: 3.5"W x 8.75"H

Material: White Vinyl Pressure Sensitive Adhesive

Thickness: 4 Mil

Ink: U.V. protected CMYK 2/C Process

Finish: Polished

Print Process: Offset Lithography - 200 line-screen or 300 p.p.i. for digital

Lamination: Clear-gloss over-laminate for abrasion, chemical, and ultra violet protection

MD-6XP Product Decal Positioning

E



PN 5905176

Scissor_Cylinder_Warning-Red-5905176.pdf:

Size: 3"W x 3"H

Material: White Vinyl Pressure Sensitive Adhesive

Thickness: 4 Mil

Ink: U.V. protected CMYK 2/C Process

Finish: Polished

Print Process: Offset Lithography - 200 line-screen or 300 p.p.i. for digital

Lamination: Clear-gloss over-laminate for abrasion, chemical, and ultra violet protection

F



PN 5905583

Hazard Decals on left and right side of the platforms

Hazard_Decal.pdf:

Material: Clear Adhesive PET

Size: 24"W x 2"H

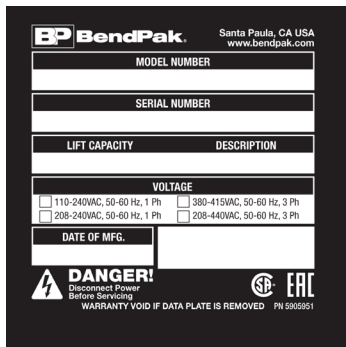
Thickness: 4 Mil

Finish: Polished

Ink: U.V. protected, Opaque White

Lamination: Clear-gloss over-laminate for abrasion, chemical, and ultra violet protection

G



PN 5905951

2015_Serial_Tag-B-590591.jpg:

Size: 3"W x 3"H

Material: Material: 2 Mil. Matte Silver Polyester (Flex-PSE)

Print using thermal transfer printer with resin ribbon

Ink: 1 Color-Black

MD-6XP Product Decal Positioning

