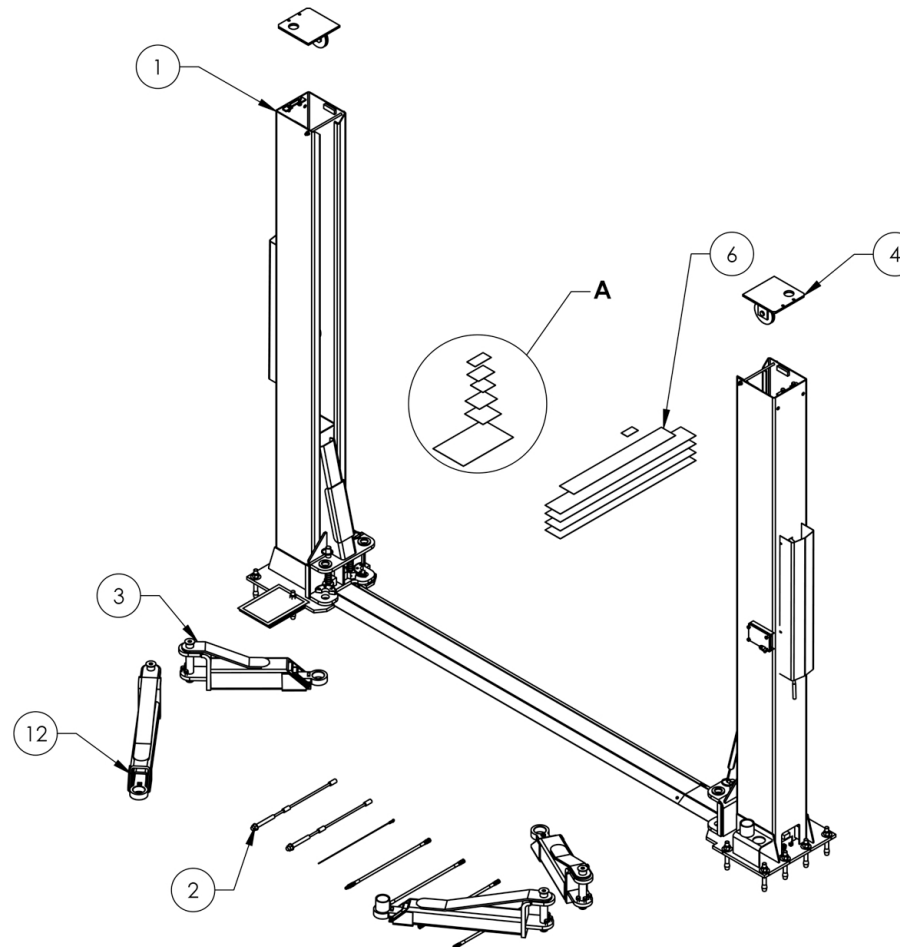


Service Manual

Service Parts & Diagrams

XPR-9S

BendPak SKU 5260558
XPR-9S Two-Post Car Lift
Version E
08/25/2016



This guide is a troubleshooting reference used for maintaining and servicing your BendPak product. It provides comprehensive information on identifying serviceable parts and components and assists in troubleshooting problems and performing assembly/disassembly procedures.



BendPak, Inc. Corporate Office

1645 Lemonwood Drive
Santa Paula, CA 93060 USA
Toll Free US/Canada: 1-800-253-2363
Fax: 1-805-933-9160
info@bendpak.com

Customer Service Desk / Warranty

Customer Service Representatives
Office Tel: 1-805-933-9970
Toll Free US/Canada: 1-800-253-2363
Fax: 1-805-933-9160
customerservice@bendpak.com

Parts Orders

Customer Service Representatives
Office Tel: 1-805-933-9970
Toll Free US/Canada: 1-800-253-2363
Fax: 1-805-933-9160
parts@bendpak.com

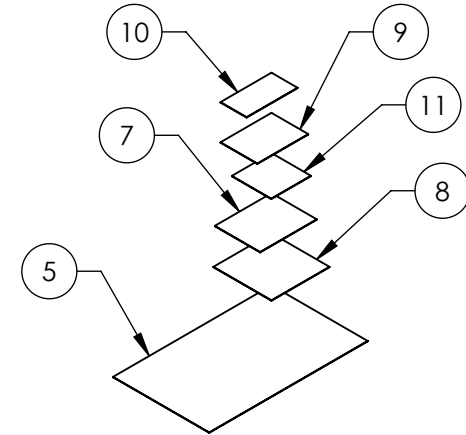
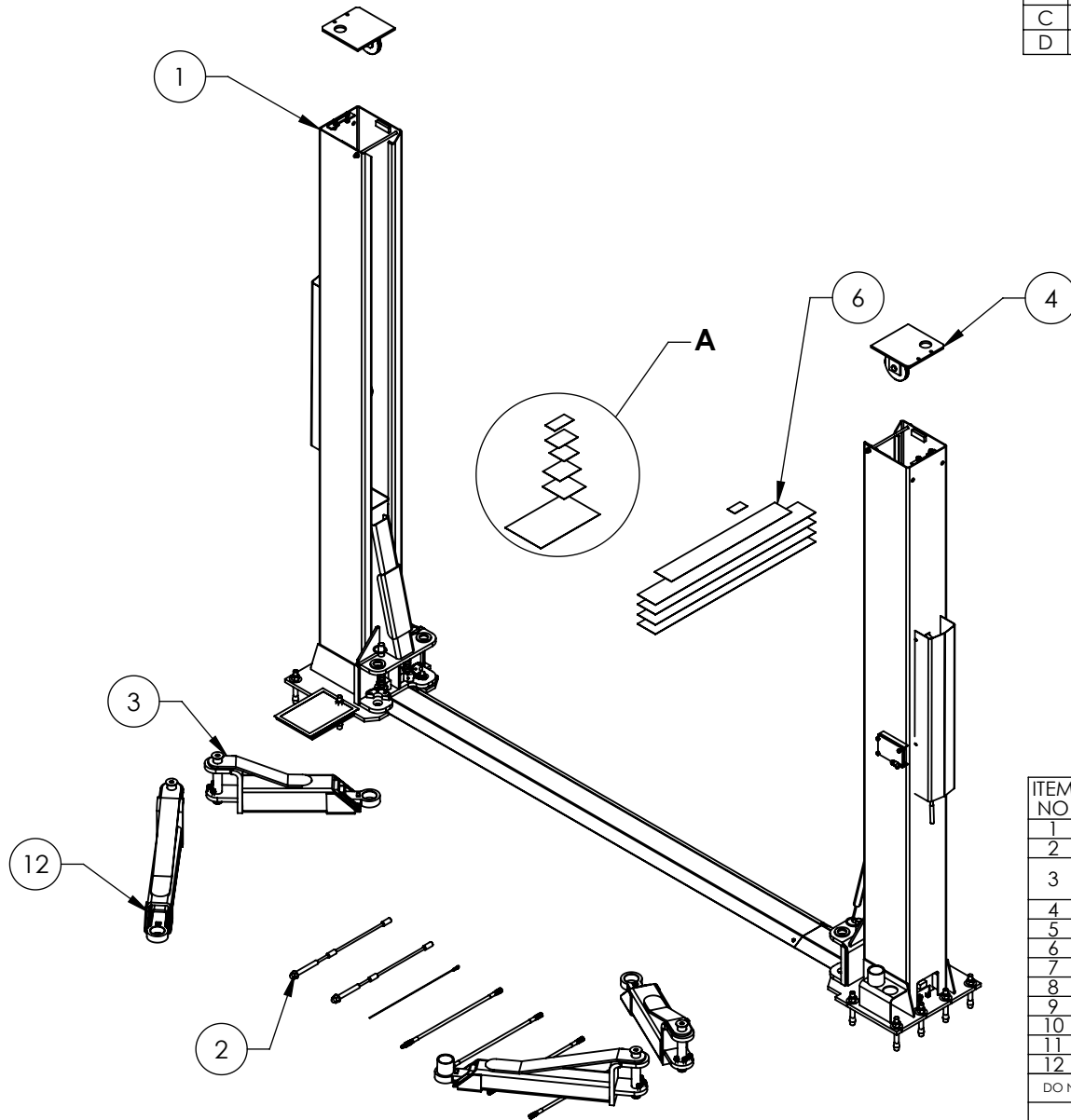
Domestic Sales & Service

USA Sales Representatives
Office Tel: 1-805-933-9970
Toll Free US/Canada: 1-800-253-2363
Fax: 1-805-933-9160
sales@bendpak.com

International Sales & Service

Office Tel: 1-805-933-9970
Exports Department: 1-805-933-9970 Ext. 192
Toll Free US/Canada: 1-800-253-2363
Fax: 1-805-933-9160
bpkexports@bendpak.com

REVISION				
REV	DESCRIPTION	DATE	EDITED BY	ECO#
B	UPDATED BOM REVISIONS	03/22/2016	TM	00750
C	UPDATED BOM REVISION	08/03/2016	TM	00771
D	UPDATED BOM REVISION	08/25/2016	TM	00777



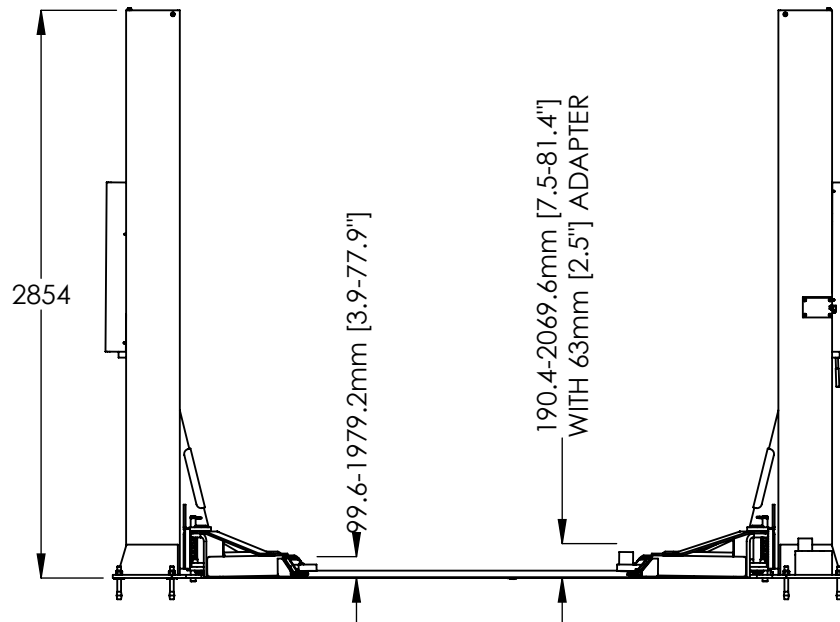
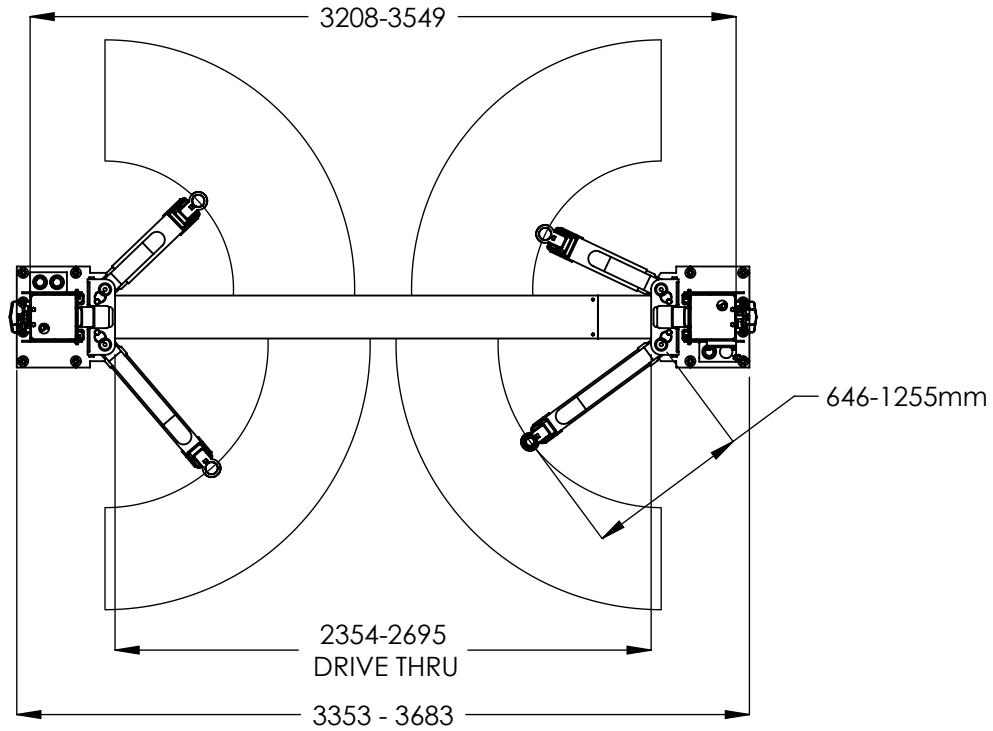
DETAIL A
SCALE 1 : 12


ITEM NO	PART NUMBER	DESCRIPTION	QTY	REV
1	5245225	XPR-9S LIFT SUPERSTRUCTURE	1	P
2	5250037	XPR-9S PARTS BOX	1	D
3	5215287	XPR-9S/9DS/10S LOW PROFILE TRIPLE TELESCOPING ARM ASSEMBLY	2	D
4	5215226	XPR-9/9D TOP EQUALIZER PULLEY PLATE ASSEMBLY	2	J
5	5905109	WARNING ALI/WL 101	1	--
6	5905131	2 POST DECAL KIT, LESS ALI	1	C
7	5905402	MAX CAP DANGER 9K	1	--
8	5905465	MANUFACTURER LABEL	1	--
9	5905650	MAX CAP NRTL DANGER 9K	1	--
10	5905940	PRODUCT DATA LABEL	1	--
11	5905950	2015 SERIAL TAG-A-5905950	1	--
12	5215700	XPR-9S/9DS/10S LOW PROFILE MEDIUM ARM ASSEMBLY	2	D

DO NOT SCALE DRAWING	NAME	DATE	1645 LEMONWOOD DR. SANTA PAULA, CA 93060
	DRAWN JM	12/14/2015	
	CHECKED DB	09/06/2016	
DIMENSIONS ARE IN MM	THIRD ANGLE PROJECTION		TITLE: XPR-9S PRODUCTION LIFT VER E
	<small>PROPRIETARY AND CONFIDENTIAL</small> <small>THE INFORMATION CONTAINED IN THIS DRAWING IS THE SOLE PROPERTY OF BENDPAK INC. ANY REPRODUCTION IN PART OR AS A WHOLE WITHOUT THE WRITTEN PERMISSION OF BENDPAK INC. IS PROHIBITED.</small>		SIZE DWG. NO.
			A 5260558
			REV D
SCALE: 1:30			SHEET 1 OF 2

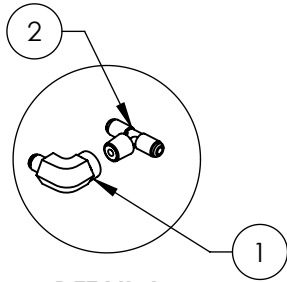
NOTE: UNLESS OTHERWISE SPECIFIED.

- SEE SHIPPING INSTRUCTIONS FOR FINAL PACKAGING
- ALL LABELS TO BE APPLIED TO POSTS AFTER PAINTING. SEE ATTACHED LABEL PLACEMENT SHEET.

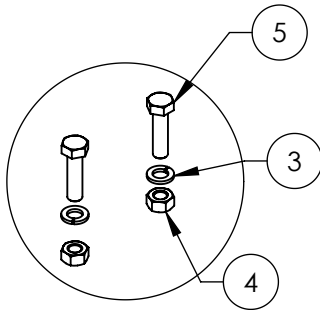
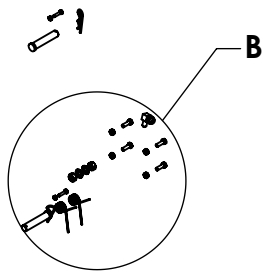


 BendPak. 1645 LEMONWOOD DR. SANTA PAULA, CA 93060	
TITLE: XPR-9S PRODUCTION LIFT VER E	
SIZE A	DWG. NO. 5260558
SCALE: 1:35	
REV D	
SHEET 2 OF 2	

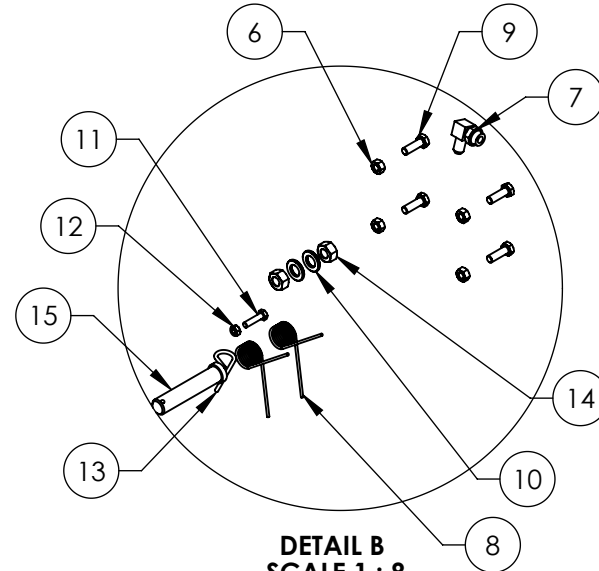
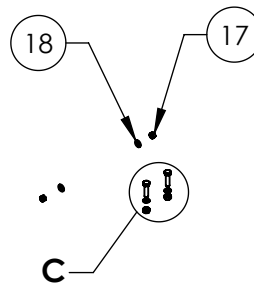
REVISION		DATE	EDITED BY	ECO#
REV	DESCRIPTION			
G	ADDED (2) 5540075, REPLACED 5530314 WITH 5530261, REPLACED 5540001 WITH 5540075, UPDATED BOM REVISION AND NEXT ASSEMBLIES	06/17/2013	TM	00605
H	UPDATED BOM REVISION	05/30/2014	TM	00649
J	REPLACED 5505113 WITH 5505001	10/06/2014	TM	00663
J-001	UPDATED NEXT ASSEMBLY	12/17/2015	TM	00738



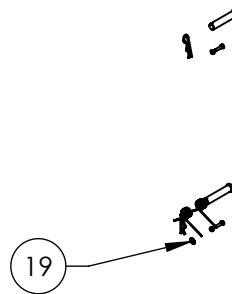
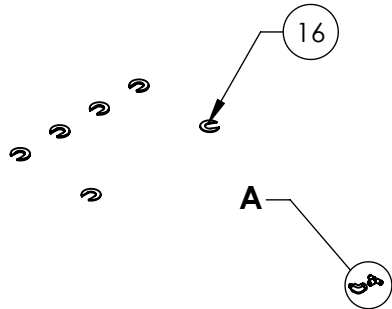
DETAIL A
SCALE 1 : 5



DETAIL C
SCALE 1 : 5



DETAIL B
SCALE 1 : 8



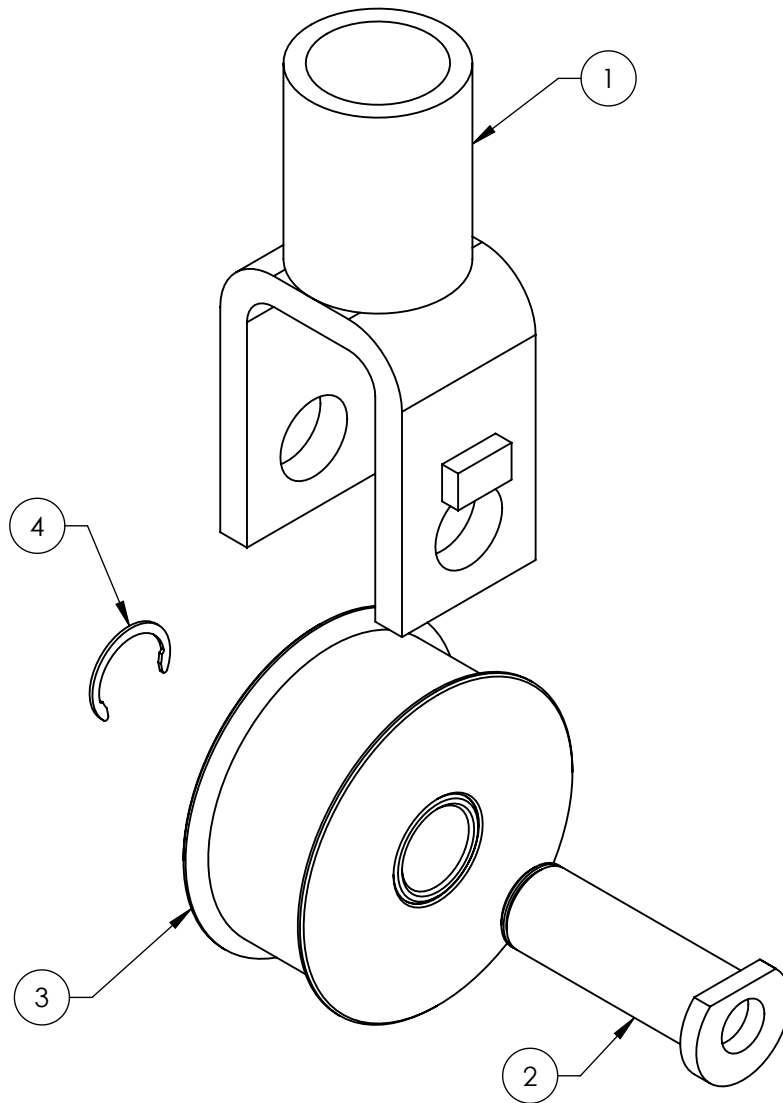
ITEM NO.	PART NUMBER	DESCRIPTION	QTY	REV
1	5550153	FTG ELB -04 NPT F x -04 JIC	1	-
2	5550181	FTG TEE -04 JIC x -04 JIC x 04 NPT	1	-
3	5545200	WASHER M10 x Ø18 SL	4	-
4	5535998	NUT M10 x 1.5	4	-
5	5530760	HEX HEAD BOLT M10x1.25x35	4	-
6	5535001	NUT M8 x 1.25 NL	4	-
7	5550103	FTG ELB -04 JIC -06 ORB	1	-
8	5540075	2.5 WIRE DIA. Ø20.5 x 75 LG	4	A
9	5530010	HNB M8 x 1.25 x 25	4	-
10	5545347	WASHER M12 FLAT WASHER	2	-
11	5530756	HNB M6 x 1 x 25	4	-
12	5535357	NUT M6 x 1.0 NL	4	-
13	5505350	MODEL#211 HAIR PIN/ LARGE	4	-
14	5535354	NUT M12 x 1.75	2	-
15	5505001	GP-7/PL-6000/XPR SERIES SAFETY CLEVIS PIN	4	A
16	5545535	C WASHER SHIM FOR LIFTS	20	-
17	5535013	NUT M10 x 1.5 NL	4	-
18	5545341	WASHER M10 x Ø20 FLAT	4	-
19	5505031	ROTOR CLIP 12mm SS	1	-

DO NOT SCALE DRAWING	NAME	DATE	1645 LEMONWOOD DR. SANTA PAULA, CA 93060
	DRAWN	AC 11/20/2009	
	CHECKED	CA 02/19/2016	
DIMENSIONS ARE IN MM 	THIRD ANGLE PROJECTION		TITLE: XPR-9 PARTS BAG
			SIZE DWG. NO. A 5174215
PROPRIETARY AND CONFIDENTIAL THE INFORMATION CONTAINED IN THIS DRAWING IS THE SOLE PROPERTY OF BENDPAK INC. ANY REPRODUCTION IN PART OR AS A WHOLE WITHOUT THE WRITTEN PERMISSION OF BENDPAK INC. IS PROHIBITED.			REV J
NEXT ASSEMBLY 5250037			SCALE: 1:20 SHEET 1 OF 1

NOTE: UNLESS OTHERWISE SPECIFIED.

1. SEE SHIPPING INSTRUCTIONS FOR FINAL PACKAGING

		REVISION		
REV	DESCRIPTION	DATE	EDITED BY	ECO#
D	UPDATED TITLE TO REFLECT WHERE USED, UPDATED NEXT ASSEMBLY AND BOM REVISIONS	02/13/2012	TM	00490
D-001	UPDATED NEXT ASSEMBLY	03/13/2013	TM	00586
E	UPDATED BOM REVISIONS AND NEXT ASSEMBLIES	06/24/2013	TM	00605
F	UPDATED TITLE TO REFLECT WHERE USED, UPDATED NEXT ASSEMBLY AND BOM REVISIONS	11/25/2015	TM	00738



ITEM NO	PART NUMBER	DESCRIPTION	QTY	REV
1	5600381	RTL-8000, XPR-9S PULLEY HOUSING WELDMENT	1	E
2	5600082	PL-7000XR, RTL-8000, XPR-9S CHAIN ROLLER PIN WELDMENT	1	F
3	5215073	PL-7000XR, RTL-8000, XPR-9 CHAIN ROLLER ASSEMBLY	1	G
4	5540006	SNAP RING TRUARC 5103-100	1	-

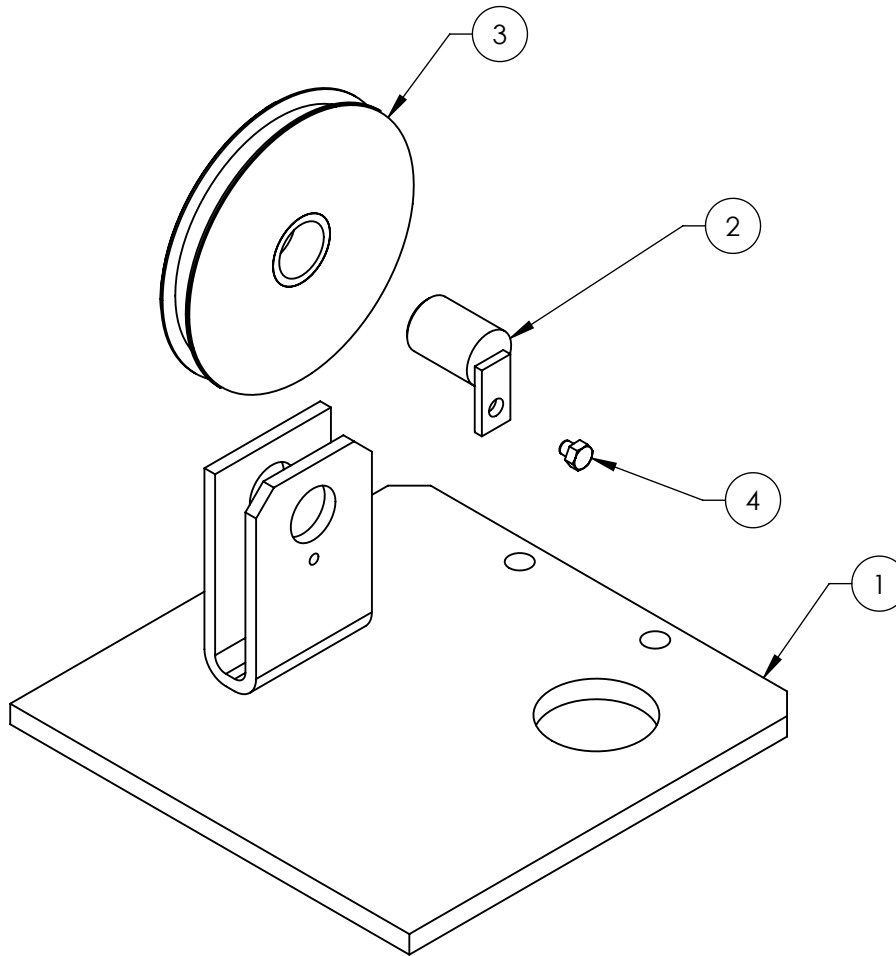
DO NOT SCALE DRAWING		NAME	DATE	1645 LEMONWOOD DR. SANTA PAULA, CA 93060
DIMENSIONS ARE IN MM		DRAWN	TM 01/06/2006	
		CHECKED	CA 02/17/2016	
		THIRD ANGLE PROJECTION		TITLE:
				RTL-8000/XPR-9S CHAIN ROLLER ASSEMBLY
		<small>PROPRIETARY AND CONFIDENTIAL THE INFORMATION CONTAINED IN THIS DRAWING IS THE SOLE PROPERTY OF BENDPAK INC. ANY REPRODUCTION IN PART OR AS A WHOLE WITHOUT THE WRITTEN PERMISSION OF BENDPAK INC. IS PROHIBITED.</small>		SIZE DWG. NO.
				A 5210117
				REV
				F
			SCALE: 1:2	SHEET 1 OF 1

NOTE: UNLESS OTHERWISE SPECIFIED.

1. ASSEMBLE ITEMS AS SHOWN

NEXT ASSEMBLY
5215391
5215392
5215588

REVISION				
REV	DESCRIPTION	DATE	EDITED BY	ECO#
G	UPDATED TITLE TO REFLECT WHERE USED, UPDATED BOM REVISIONS, UPDATED NEXT ASSEMBLIES	02/13/2012	TM	00490
H	UPDATED BOM REVISION	05/21/2012	TM	00517
H-001	UPDATED NEXT ASSEMBLIES	07/03/2013	TM	00605
H-002	UPDATED NEXT ASSEMBLIES	08/19/2013	TM	00615
H-003	UPDATED NEXT ASSEMBLIES	07/17/2014	TM	00661
J	UPDATED TITLE TO REFLECT MARKETING, UPDATED BOM REVISIONS AND NEXT ASSEMBLIES	11/23/2015	TM	00738



ITEM NO	PART NUMBER	DESCRIPTION	QTY	REV
1	5210154	XPR-9/9D TOP EQUALIZER PULLEY PLATE WELDMENT	1	G
2	5620141	XPR-9/10 CABLE SHEAVE PIN WELDMENT	1	F
3	5575111	XPR-9S/10 SHEAVE ASSEMBLY	1	F
4	5530030	HHB M6 x 1 x 8	1	-

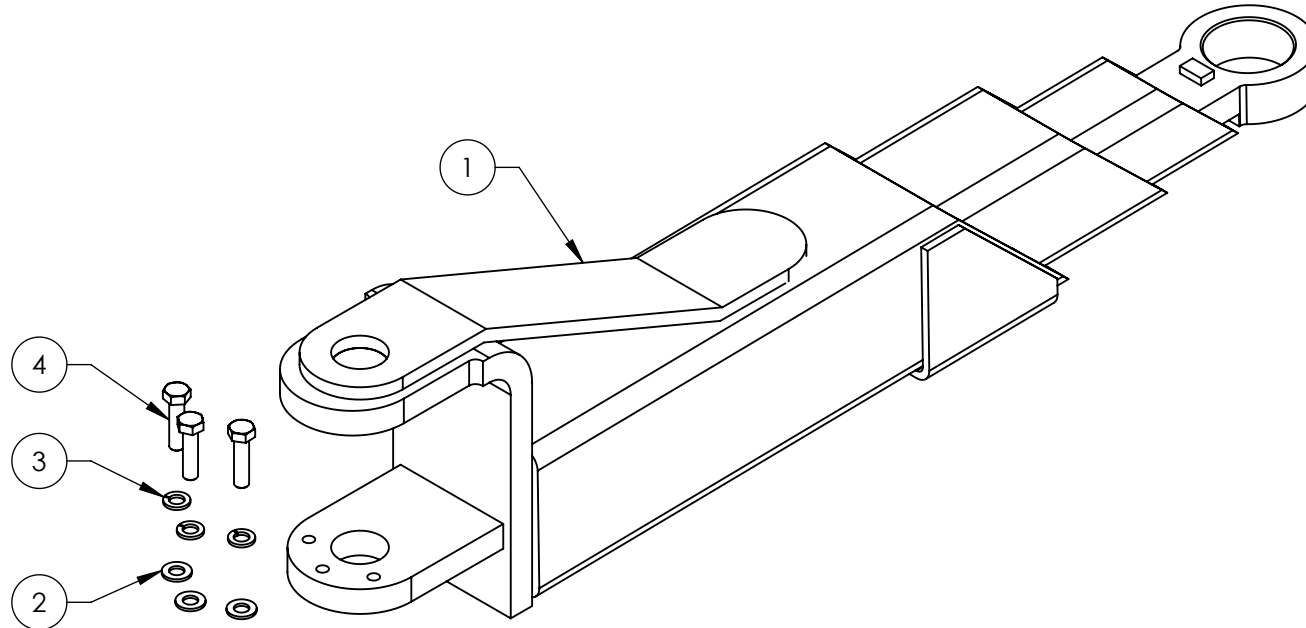
DO NOT SCALE DRAWING		NAME	DATE	1645 LEMONWOOD DR. SANTA PAULA, CA 93060
DRAWN		TM	02/26/2010	
CHECKED		CA	02/19/2016	
DIMENSIONS ARE IN MM		THIRD ANGLE PROJECTION		TITLE: XPR-9/9D TOP EQUALIZER PULLEY PLATE ASSEMBLY
				SIZE DWG. NO. J
				A 5215226
PROPRIETARY AND CONFIDENTIAL THE INFORMATION CONTAINED IN THIS DRAWING IS THE SOLE PROPERTY OF BENDPAK INC. ANY REPRODUCTION IN PART OR AS A WHOLE WITHOUT THE WRITTEN PERMISSION OF BENDPAK INC. IS PROHIBITED.			SCALE: 1:3	SHEET 1 OF 1

NEXT ASSEMBLY
5260553
5260554
5260558
5260555
5260557



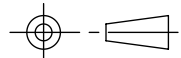
NOTE: UNLESS OTHERWISE SPECIFIED.

- SEE SHIPPING INSTRUCTIONS FOR FINAL PACKAGING
- ASSEMBLE ITEMS AS SHOWN

REVISION				
REV	DESCRIPTION	DATE	EDITED BY	ECO#
B	REMOVED 5505050, UPDATED BOM REVISION	09/22/2015	TM	00729
C	UPDATED TITLE TO REFLECT WHERE USED, UPDATED NEXT ASSEMBLIES	12/17/2015	JM	00738
D	UPDATED BOM REVISION	03/22/2016	TM	00750



ITEM NO	PART NUMBER	DESCRIPTION	QTY	REV
1	5600997	XPR-9/9D/10 LOW PROFILE TRIPLE TELESCOPING ARM WELDMENT	1	C
2	5545341	WASHER M10 x Ø20 FLAT	3	-
3	5545200	WASHER M10 x Ø18 SL	3	-
4	5530302	HHB M10 x 1.5 x 40	3	-

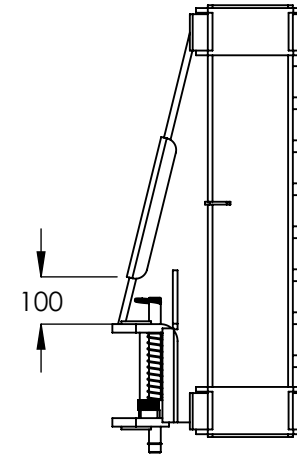
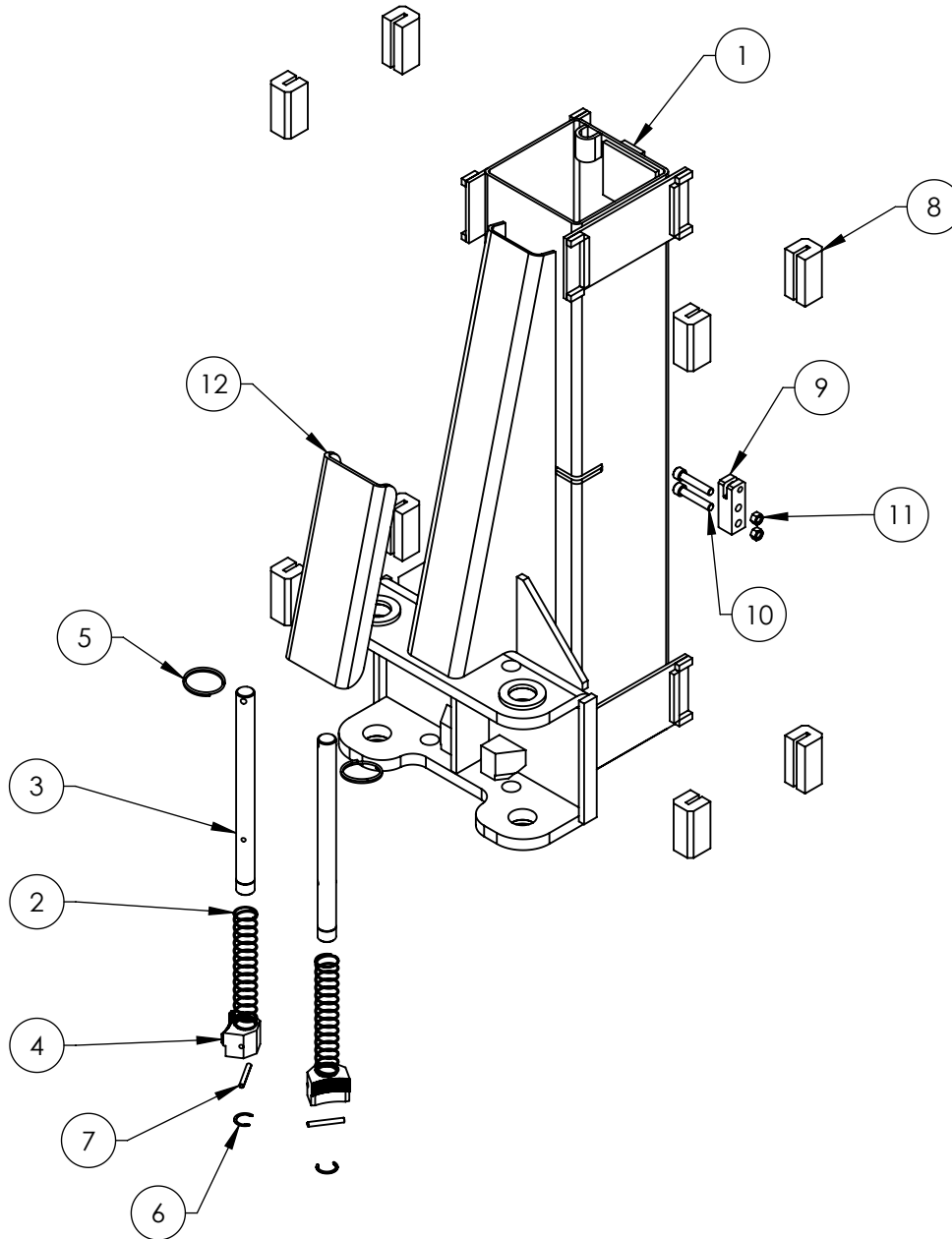
DO NOT SCALE DRAWING		NAME	DATE	 1645 LEMONWOOD DR. SANTA PAULA, CA 93060
DIMENSIONS ARE IN MM 		DRAWN	JM 06/23/2015	
		CHECKED	CA 04/26/2016	
THIRD ANGLE PROJECTION 		TITLE: XPR-9S/9DS/10S LOW PROFILE TRIPLE TELESCOPING ARM ASSEMBLY		
		SIZE	DWG. NO.	REV
		A	5215287	D
SCALE: 1:5			SHEET 1 OF 1	

NEXT ASSEMBLY
5260553
5260554
5260555
5260558
5260572
5260574
5260575

NOTE: UNLESS OTHERWISE SPECIFIED.

- SEE SHIPPING INSTRUCTIONS FOR FINAL PACKAGING
- ASSEMBLE ITEMS AS SHOWN

REVISION				
REV	DESCRIPTION	DATE	EDITED BY	ECO#
H	UPDATED BOM REVISION	11/24/2014	TM	00693
J	UPDATED BOM REVISION	05/14/2015	TM	00689
K	UPDATED TITLE TO REFLECT WHERE USED UPDATED BOM REVISIONS	11/03/2016	HG	00738



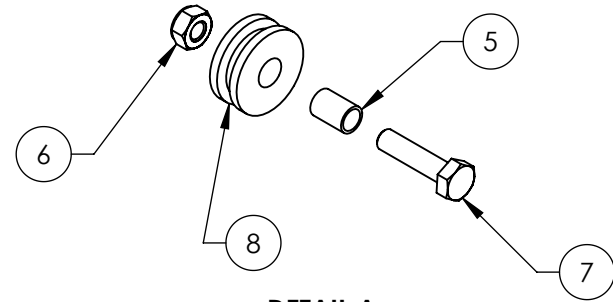
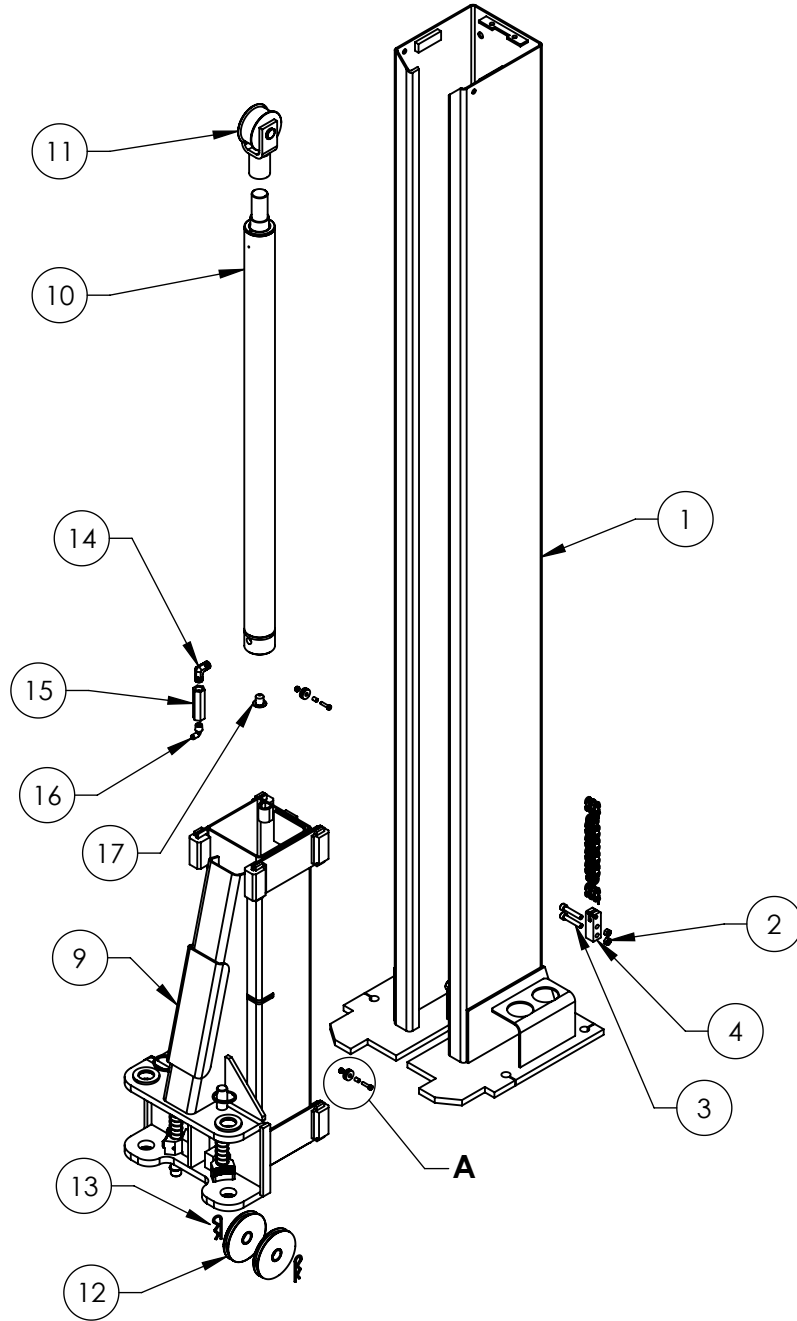
ITEM NO	PART NUMBER	DESCRIPTION	QTY	REV
1	5600508	XPR-9 LIFT HEAD WELDMENT	1	J
2	5540133	GP-7, RTL-8000, XPR-9/10 LIFT HEAD SPRING	2	C
3	5746098	GP/RTL, XPR-9/10 Ø25mm GEAR SHAFT	2	E
4	5701052	GP/RTL/XPR ARM INTERNAL GEAR STOP	2	E
5	5580219	KEYRING 56mm x 3mm	2	-
6	5540006	SNAP RING TRUARC 5103-100	2	-
7	5505106	SPRING PIN M6 x 50	2	A
8	5716001	PL-6000/7000, GP/XPR SERIES GUIDE BLOCK	8	E
9	5761003	PL-7000, XPR-9S CHAIN CONNECTOR	1	G
10	5530761	SHCS M10 x 1.5 x 55	2	-
11	5535013	NUT M10 x 1.5 NL	2	-
12	5930183	XPR-9/10 LIFT HEAD GUSSET COVER	1	E

NOTE: UNLESS OTHERWISE SPECIFIED.
 1. SEE SHIPPING INSTRUCTIONS FOR FINAL PACKAGING
 2. ASSEMBLE ITEMS AS SHOWN

NEXT ASSEMBLY
5215391
5215392

DO NOT SCALE DRAWING	NAME	DATE	1645 LEMONWOOD DR. SANTA PAULA, CA 93060
DIMENSIONS ARE IN MM 	DRAWN	TM 08/30/2010	
	CHECKED	CA 02/18/2016	
	THIRD ANGLE PROJECTION		TITLE: XPR-9S LIFT HEAD ASSEMBLY
	PROPRIETARY AND CONFIDENTIAL THE INFORMATION CONTAINED IN THIS DRAWING IS THE SOLE PROPERTY OF BENDPAK INC. ANY REPRODUCTION IN PART OR AS A WHOLE WITHOUT THE WRITTEN PERMISSION OF BENDPAK INC. IS PROHIBITED.		SIZE DWG. NO. REV A 5215386 K
	SCALE: 1:10		SHEET 1 OF 1

REV	DESCRIPTION	REVISION	DATE	EDITED BY	ECO#
M	UPDATED BOM REVISION		12/16/2014	TM	00673
N	UPDATED BOM REVISION		05/14/2015	TM	00689
P	UPDATED TITLE TO REFLECT WHERE USED UPDATED BOM REVISIONS		11/02/2015	HG	00738



DETAIL A
SCALE 1 : 2

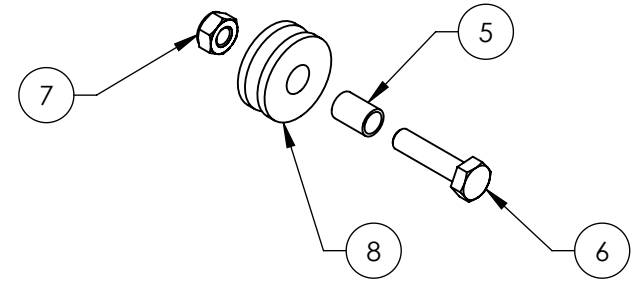
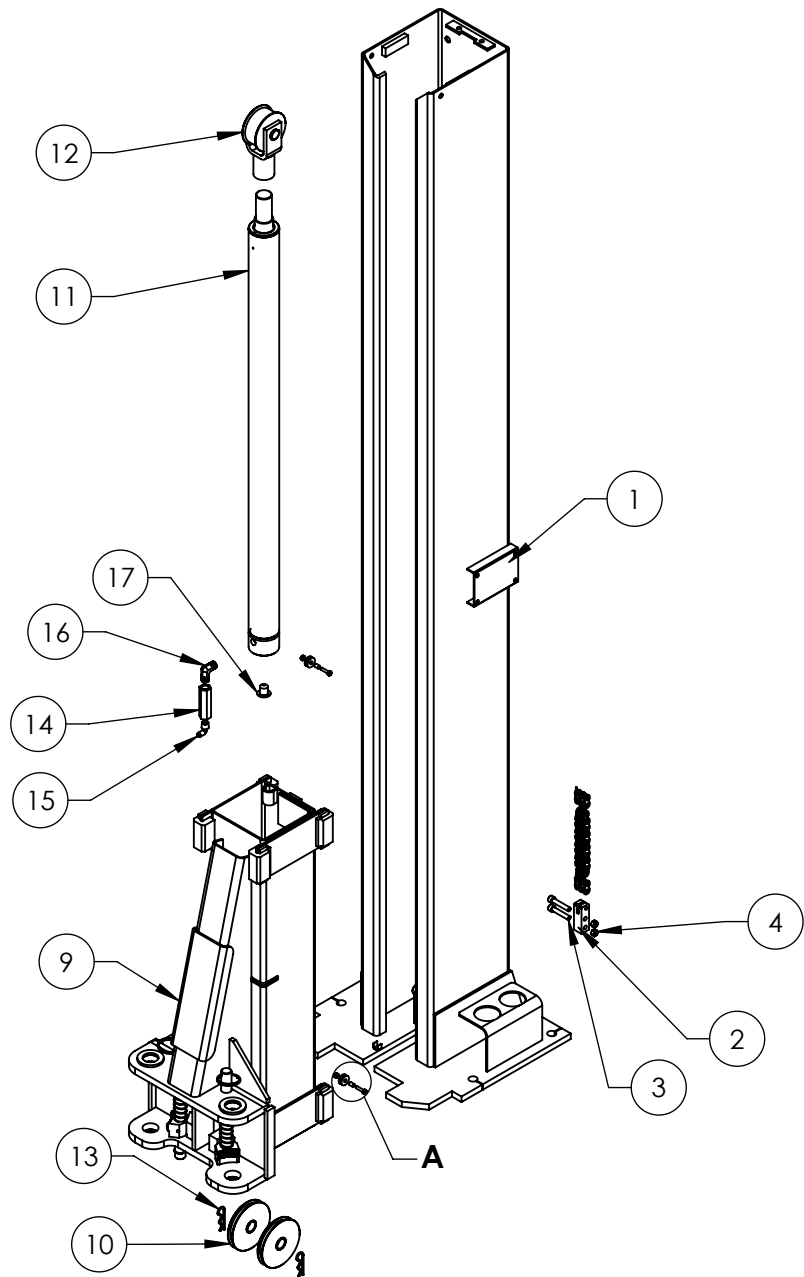
ITEM NO	PART NUMBER	DESCRIPTION	QTY	REV
1	5600368	XPR-9S OFF SIDE POST WELDMENT	1	J
2	5535013	NUT M10 x 1.5 NL	2	-
3	5530761	SHCS M10 x 1.5 x 55	2	-
4	5761003	PL-7000, XPR-9S CHAIN CONNECTOR	1	G
5	5565350	GP/PCL/XPR/PL-7000 SAFETY SHEAVE SPACER	2	C
6	5535357	NUT M6 x 1.0 NL	2	-
7	5530756	HHB M6 x 1 x 25	2	-
8	5575112	GP/PCL/XPR/PL-7000 SAFETY SHEAVE	2	C
9	5215386	XPR-9S LIFT HEAD ASSEMBLY	1	K
10	5502321	CYLINDER ASSEMBLY Ø2.5 x 37 - Ø1.75 ROD	1	E
11	5210117	RTL-8000/XPR-9S CHAIN ROLLER ASSEMBLY	1	F
12	5575111	XPR-9S/10 SHEAVE ASSEMBLY	2	F
13	5505350	MODEL#211 HAIR PIN/ LARGE	2	A
14	5550041	FTG ELB -06 NPT x -06 NPT	1	-
15	5550108	XPR-9S 3/8" NPT TUBE FITTING	1	E
16	5550106	FTG ELB -04 JIC-06 NPT	1	-
17	5210943	XPR-9S CYLINDER LEVELING PLUG	1	F
18	5210116	XPR-9S CYLINDER CHAIN 2800mm	1	E

DO NOT SCALE DRAWING	NAME	DATE	1645 LEMONWOOD DR. SANTA PAULA, CA 93060
DIMENSIONS ARE IN MM 	DRAWN	TM 08/30/2010	
	CHECKED	CA 02/18/2016	
THIRD ANGLE PROJECTION 			TITLE: XPR-9S OFF SIDE POST ASSEMBLY
PROPRIETARY AND CONFIDENTIAL THE INFORMATION CONTAINED IN THIS DRAWING IS THE SOLE PROPERTY OF BENDPAK INC. ANY REPRODUCTION IN PART OR AS A WHOLE WITHOUT THE WRITTEN PERMISSION OF BENDPAK INC. IS PROHIBITED.			SIZE DWG. NO. REV A 5215391 P
NEXT ASSEMBLY 5245225			SCALE: 1:18 SHEET 1 OF 1

NOTE: UNLESS OTHERWISE SPECIFIED.

- SEE SHIPPING INSTRUCTIONS FOR FINAL PACKAGING
- ASSEMBLE ITEMS AS SHOWN

REV	DESCRIPTION	REVISION	DATE	EDITED BY	ECO#
M	UPDATED BOM REVISIONS		11/20/2014	TM	00673
N	UPDATED BOM REVISION		05/14/2015	TM	00689
P	UPDATED TITLE TO REFLECT WHERE USED UPDATED BOM REVISIONS		11/03/2015	HG	00738



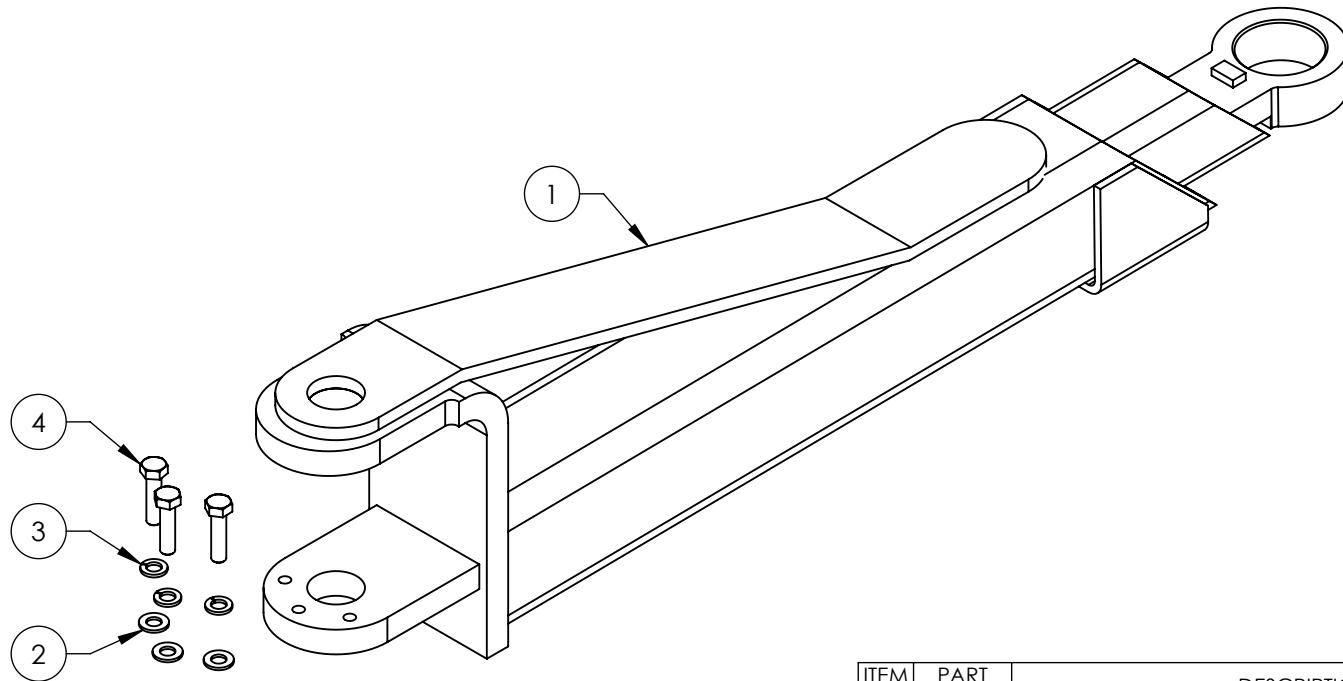
DETAIL A
SCALE 1 : 2

ITEM NO	PART NUMBER	DESCRIPTION	QTY	REV
1	5600369	XPR-9S POWER SIDE POST WELDMENT	1	J
2	5761003	PL-7000, XPR-9S CHAIN CONNECTOR	1	G
3	5530761	SHCS M10 x 1.5 x 55	2	-
4	5535013	NUT M10 x 1.5 NL	2	-
5	5565350	GP/PCL/XPR/PL-7000 SAFETY SHEAVE SPACER	2	C
6	5530756	HHB M6 x 1 x 25	2	-
7	5535357	NUT M6 x 1.0 NL	2	-
8	5575112	GP/PCL/XPR/PL-7000 SAFETY SHEAVE	2	C
9	5215386	XPR-9S LIFT HEAD ASSEMBLY	1	K
10	5575111	XPR-9S/10 SHEAVE ASSEMBLY	2	F
11	5502321	CYLINDER ASSEMBLY Ø2.5 x 37 - Ø1.75 ROD	1	E
12	5210117	RTL-8000/XPR-9S CHAIN ROLLER ASSEMBLY	1	F
13	5505350	MODEL#211 HAIR PIN/ LARGE	2	-
14	5550108	XPR-9S 3/8" NPT TUBE FITTING	1	E
15	5550106	FTG ELB -04 JIC-06 NPT	1	-
16	5550041	FTG ELB -06 NPT x -06 NPT	1	-
17	5210943	XPR-9S CYLINDER LEVELING PLUG	1	F
18	5210116	XPR-9S CYLINDER CHAIN 2800mm	1	E



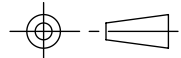
DO NOT SCALE DRAWING	NAME	DATE	1645 LEMONWOOD DR. SANTA PAULA, CA 93060
DIMENSIONS ARE IN MM 	DRAWN	TM 08/30/2010	
	CHECKED	CA 02/18/2016	
THIRD ANGLE PROJECTION			TITLE: XPR-9S POWER SIDE POST ASSEMBLY
			SIZE DWG. NO. REV
PROPRIETARY AND CONFIDENTIAL THE INFORMATION CONTAINED IN THIS DRAWING IS THE SOLE PROPERTY OF BENDPAK INC. ANY REPRODUCTION IN PART OR AS A WHOLE WITHOUT THE WRITTEN PERMISSION OF BENDPAK INC. IS PROHIBITED.			A 5215392 P
NEXT ASSEMBLY 5245225			SCALE: 1:18 SHEET 1 OF 1

NOTE: UNLESS OTHERWISE SPECIFIED.
 1. SEE SHIPPING INSTRUCTIONS FOR FINAL PACKAGING
 2. ASSEMBLE ITEMS AS SHOWN

REVISION				
REV	DESCRIPTION	DATE	EDITED BY	ECO#
B	REMOVED 5505050, UPDATED BOM REVISION	09/22/2015	TM	00729
C	UPDATED TITLE TO REFLECT WHERE USED, UPDATED NEXT ASSEMBLY	12/17/2015	JM	00738
D	UPDATED BOM REVISION	03/22/2016	TM	00750



ITEM NO	PART NUMBER	DESCRIPTION	QTY	REV
1	5600998	XPR-9S/9DS/10S LOW PROFILE MEDIUM ARM WELDMENT	1	C
2	5545341	WASHER M10 x Ø20 FLAT	3	-
3	5545200	WASHER M10 x Ø18 SL	3	-
4	5530302	HHB M10 x 1.5 x 40	3	-

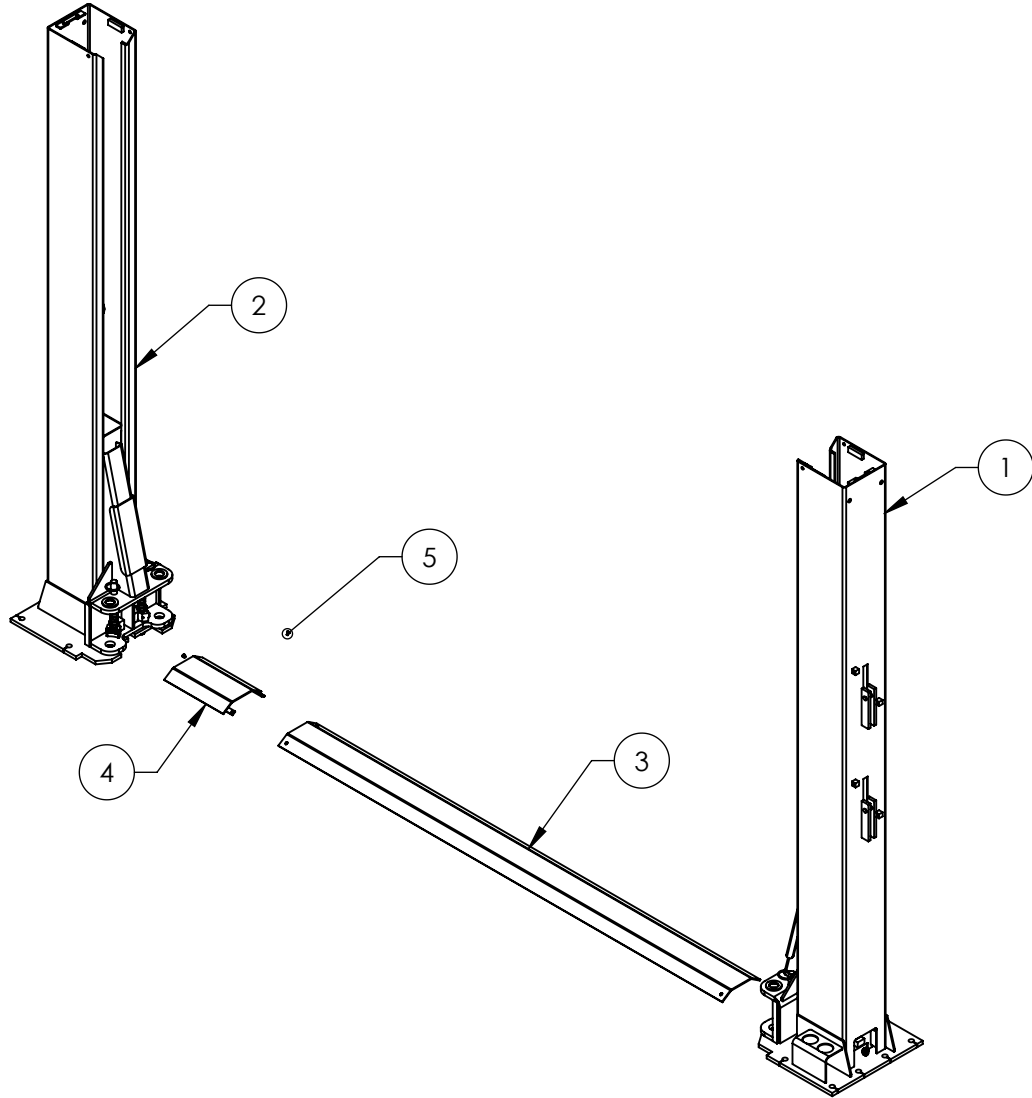
DO NOT SCALE DRAWING		NAME	DATE	 1645 LEMONWOOD DR. SANTA PAULA, CA 93060
DIMENSIONS ARE IN MM 		DRAWN	JM 06/23/2015	
		CHECKED	CA 04/26/2016	
		THIRD ANGLE PROJECTION		TITLE: XPR-9S/9DS/10S LOW PROFILE MEDIUM ARM ASSEMBLY
				SIZE DWG. NO. REV
		<small>PROPRIETARY AND CONFIDENTIAL THE INFORMATION CONTAINED IN THIS DRAWING IS THE SOLE PROPERTY OF BENDPAK INC. ANY REPRODUCTION IN PART OR AS A WHOLE WITHOUT THE WRITTEN PERMISSION OF BENDPAK INC. IS PROHIBITED.</small>		A 5215700 D
		SCALE: 1:5		SHEET 1 OF 1

NEXT ASSEMBLY
5260555
5260558
5260574
5260575

NOTE: UNLESS OTHERWISE SPECIFIED.

- SEE SHIPPING INSTRUCTIONS FOR FINAL PACKAGING
- ASSEMBLE ITEMS AS SHOWN

REVISION				
REV	DESCRIPTION	DATE	EDITED BY	ECO#
M	UPDATED BOM REVISIONS	11/24/2014	TM	00673
N	UPDATED BOM REVISIONS	05/14/2015	TM	00689
P	UPDATED TITLE TO REFLECT WHERE USED UPDATED NEXT ASSEMBLY AND BOM REVISIONS	11/03/2015	HG	00738



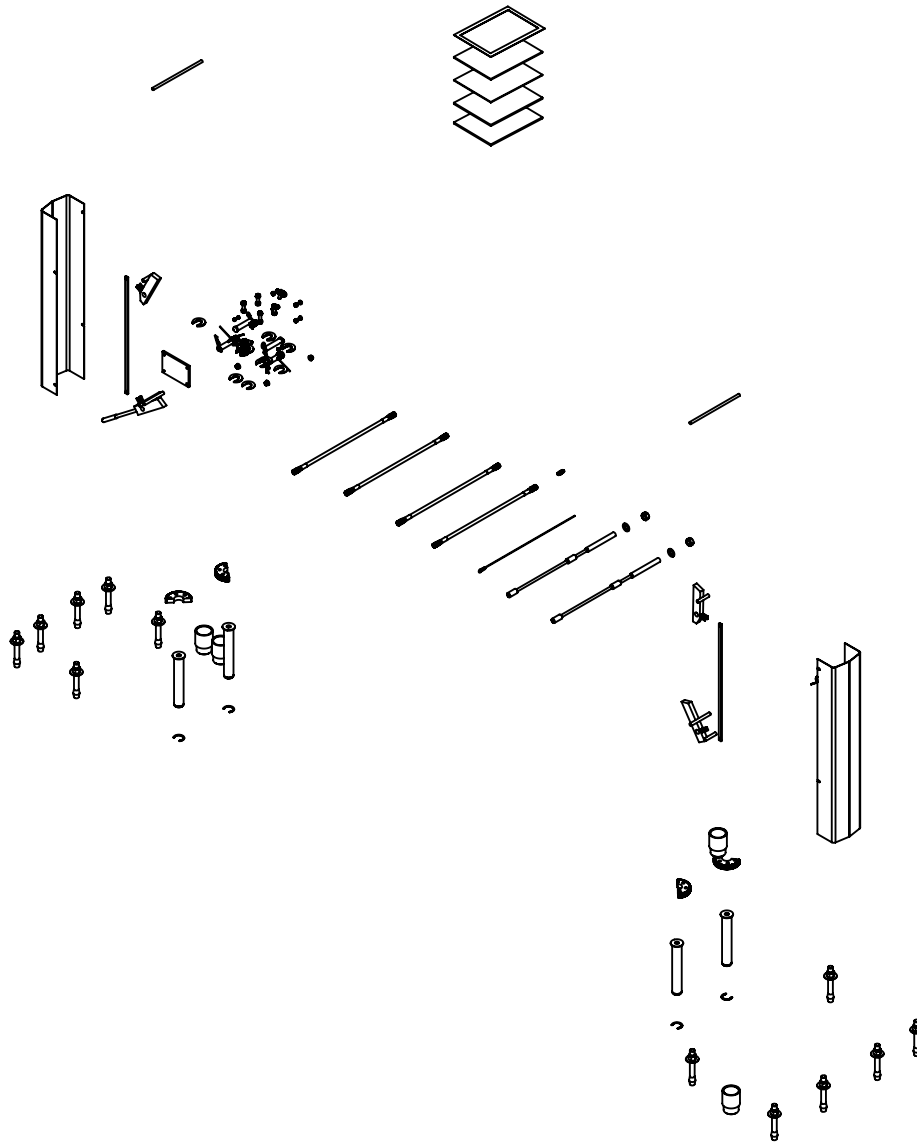
ITEM NO	PART NUMBER	DESCRIPTION	QTY	REV
1	5215391	XPR-9S OFF SIDE POST ASSEMBLY	1	P
2	5215392	XPR-9S POWER SIDE POST ASSEMBLY	1	P
3	5210018	XPR-9 GROUND PLATE	1	D
4	5600510	XPR-9 FLOORPLATE EXTENSION WELDMENT	1	A
5	5530079	BPHS M6 x1.0x10	2	-

DO NOT SCALE DRAWING		NAME	DATE	1645 LEMONWOOD DR. SANTA PAULA, CA 93060
DIMENSIONS ARE IN MM		DRAWN	TM 08/31/2010	
		CHECKED	CA 02/23/2016	
		THIRD ANGLE PROJECTION		TITLE:
				XPR-9S LIFT SUPERSTRUCTURE
		<small>PROPRIETARY AND CONFIDENTIAL THE INFORMATION CONTAINED IN THIS DRAWING IS THE SOLE PROPERTY OF BENDPAK INC. ANY REPRODUCTION IN PART OR AS A WHOLE WITHOUT THE WRITTEN PERMISSION OF BENDPAK INC. IS PROHIBITED.</small>		SIZE DWG. NO.
		A		5245225
				REV
				P
SCALE: 1:30			SHEET 1 OF 1	

NEXT ASSEMBLY
5260553
5260558
5260557

NOTE: UNLESS OTHERWISE SPECIFIED.
1. SEE SHIPPING INSTRUCTIONS FOR FINAL PACKAGING

REVISION				
REV	DESCRIPTION	DATE	EDITED BY	ECO#
B	UPDATED BOM REVISIONS	03/22/2016	TM	00750
C	UPDATED BOM REVISION	08/03/2016	TM	00771
D	UPDATED BOM REVISION	08/25/2016	TM	00777



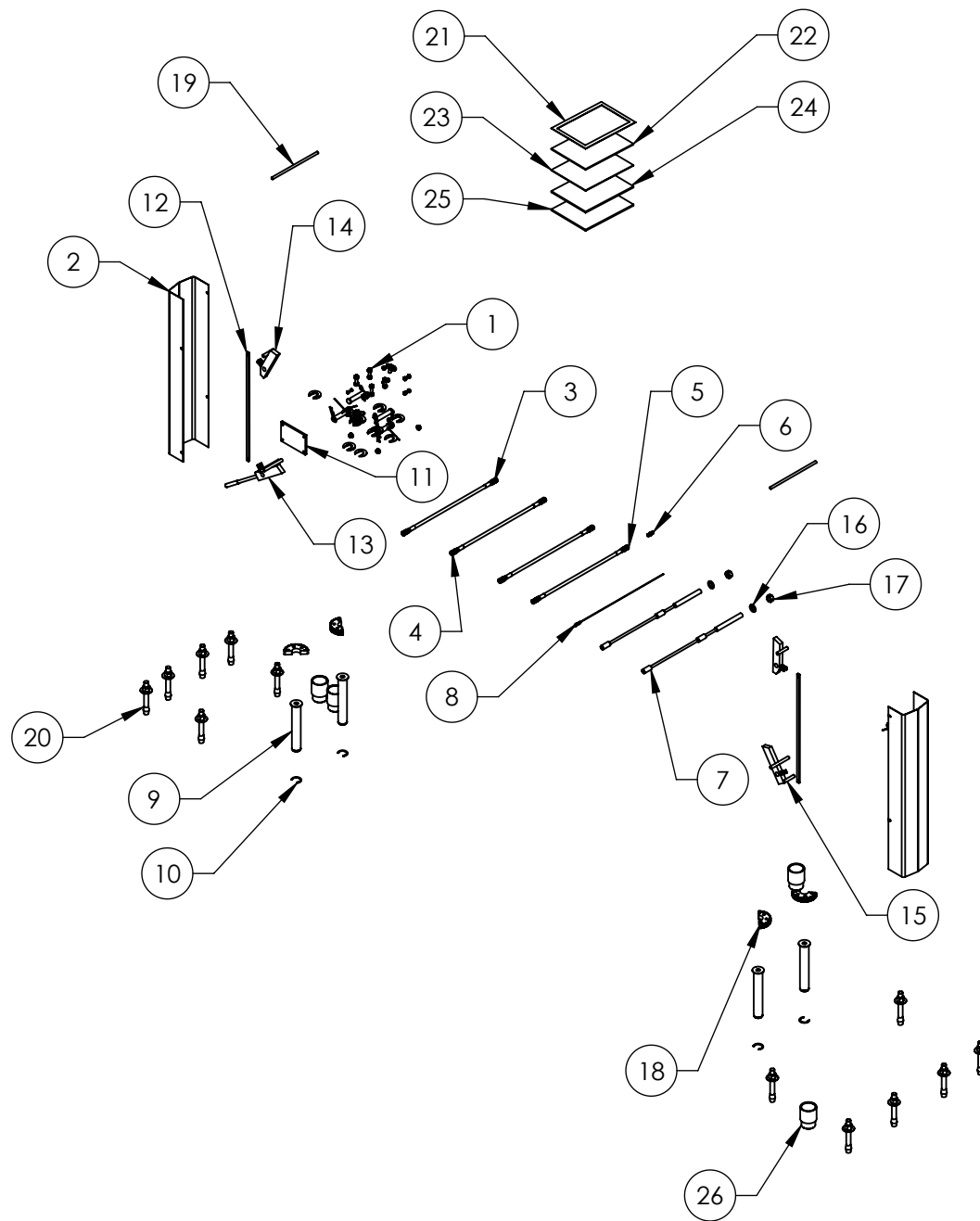
ITEM NO.	PART NUMBER	DESCRIPTION	QTY	REV
1	5174215	XPR-9 PARTS BAG	1	J
2	5701214	RTL-8000, XPR-9 SAFETY CLOSEOUT COVER	2	F
3	5570104	SP-6FR, XPR-9 HYDRAULIC HOSE ASSY Ø6.35 x 2985mm DS	1	D
4	5570103	XPR-9 HYDRAULIC HOSE ASSY Ø6.35 x 1359mm DS	2	E
5	5570176	MDS-6K, XPR-9D/10 HYDRAULIC HOSE ASSY Ø6.35 x 330mm DS	1	E
6	5550095	FTG NPL -04 JIC x -04 JIC	1	-
7	5595359	XPR-9 EQUALIZER CABLE ASSEMBLY Ø10 x 9507mm DBST	2	B
8	5595161	XPR-9 Ø2.4mm x 6400 SAFETY CABLE	1	E
9	5505116	XPR-9/10 LIFT HEAD PIN WELDMENT	4	D
10	5540281	C RING Ø38mm OD 5103-150	4	A
11	5715003	POWER UNIT VIBRATION DAMPENER	1	B
12	5731121	XPR-9 SAFETY LINKAGE BAR	2	F
13	5600370	XPR-9 SAFETY WELDMENT #1	1	J
14	5600372	XPR-9 SAFETY WELDMENT #3	2	G
15	5600371	XPR-9 SAFETY WELDMENT #2	1	H
16	5545342	WASHER M18 FLAT	2	-
17	5535358	NUT M18 x 2.5 NL	2	-
18	5736604	TWO POST LIGHT DUTY BOLT ON ARM RESTRAINT GEAR	4	E
19	5746167	DOUBLE THREADED ROD M10 x 1.5 x 275	2	B
20	5530307	AB 3/4" x 5"	12	-
21	5905151	SAFETY TIPS CARD ALI-ST 90	1	-
22	5900147	SAFETY MANUAL ALI / SM 93-1	1	-
23	5900152	ALIGN OIM OPERATION INSPECTION & MAINTENANCE	1	-
24	5900280	ALI/LP FRAME ENGAGING LIFTS GUIDE	1	-
25	5900371	XPR-9S INSTALLATION MANUAL	1	-
26	5746192	ARM ADAPTER, MEDIUM	4	D


NOTE: UNLESS OTHERWISE SPECIFIED.

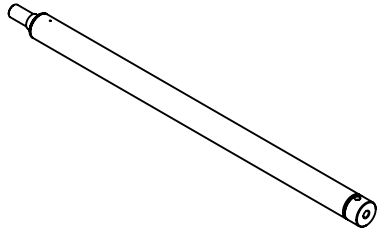
1. SEE SHIPPING INSTRUCTIONS FOR FINAL PACKAGING
2. INSERT PARTS BAG INTO PARTS BOX FOR SHIPMENT
3. THREAD 5535358 WITH 5545342 ONTO CABLES FOR SHIPMENT
4. HOSES AND CABLES IN REPRESENTATIONAL FORM

NEXT ASSEMBLY
5260553
5260558
5260557

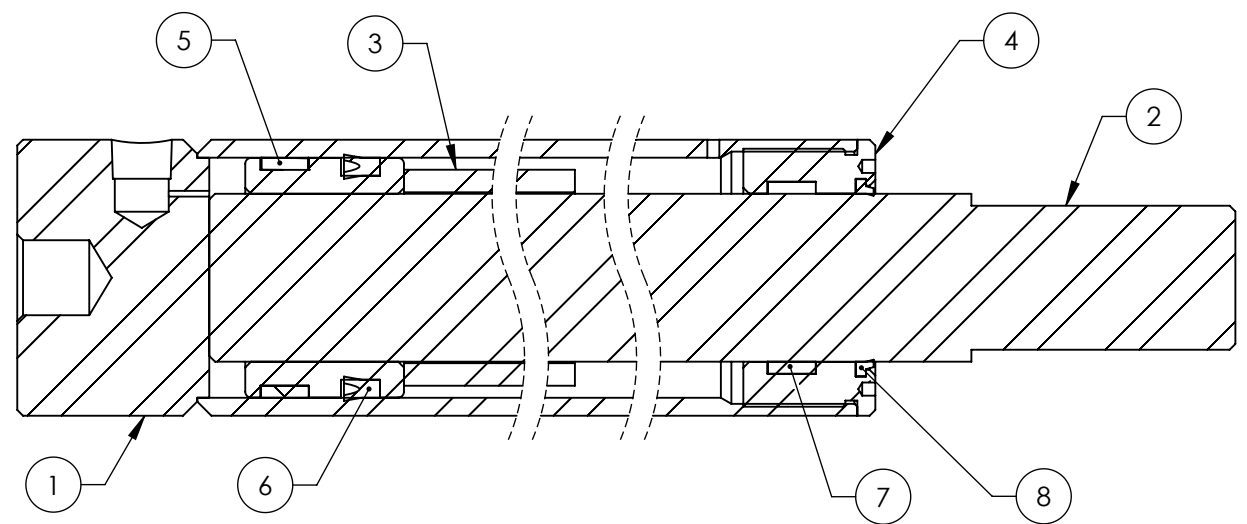
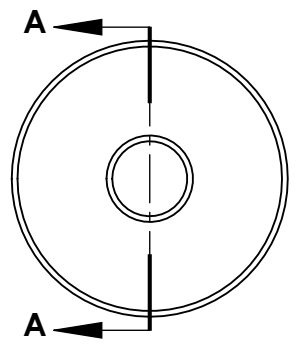
DO NOT SCALE DRAWING	NAME	DATE	1645 LEMONWOOD DR. SANTA PAULA, CA 93060	
DIMENSIONS ARE IN MM	DRAWN	JM 12/15/2015		
	CHECKED	DB 09/06/2016		
	THIRD ANGLE PROJECTION		TITLE:	
			XPR-9S PARTS BOX	
	<small>PROPRIETARY AND CONFIDENTIAL THE INFORMATION CONTAINED IN THIS DRAWING IS THE SOLE PROPERTY OF BENDPAK INC. ANY REPRODUCTION IN PART OR AS A WHOLE WITHOUT THE WRITTEN PERMISSION OF BENDPAK INC. IS PROHIBITED.</small>		SIZE DWG. NO.	
		A	5250037	REV
		SCALE: 1:30		D
			SHEET 1 OF 2	



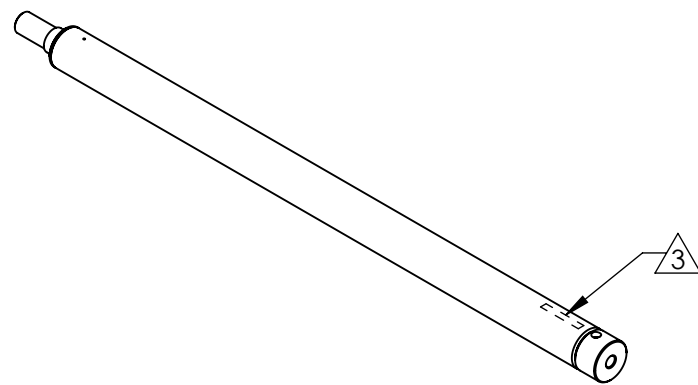
 BendPak <small>HOVING • HEAVY DUTY SERVICE EQUIPMENT</small>		1645 LEMONWOOD DR. SANTA PAULA, CA 93060	
TITLE: XPR-9S PARTS BOX			
SIZE A	DWG. NO. 5250037	REV D	SCALE: 1:30
			SHEET 2 OF 2



ISOMETRIC VIEW
FOR REFERENCE ONLY
DO NOT SCALE


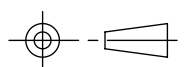


SECTION A-A




REVISION				
REV	DESCRIPTION	DATE	EDITED BY	ECO#
C	UPDATED BOM REVISION, CHANGED TEST PRESSURE TO 3600 psi	04/30/2012	TM	00517
D D-001	UPDATED BOM REVISION STAMPED INFORMATION	07/10/2012 12/23/2014	TM VB	00534 00673
E	REMOVED GLYD GS55044-0635, REPLACED WR 63.5-57.1-12.7POM WITH 5568017, CUP SEAL UN 53.5-63.5 WITH 5560031, WR-02000-0500-125 WITH 5568018, RECO-1750 WITH 5562008, ADDED FOR USE WITH TABLE, UPDATED BOM REVISIONS	04/26/2016	TS	00745

ITEM NO	PART NUMBER	DESCRIPTION	QTY	REV
1	700586	CYLINDER TUBE WELDMENT Ø2.5	1	D
2	700723	PISTON WELDMENT Ø2.5 x 37 - Ø1.75 ROD	1	E
3	700725	SPACER Ø2.5 x 37 - Ø1.75 ROD	1	B
4	700721	HEAD CAP Ø2.5 x 37 - Ø1.75 ROD	1	D
5	5568017	WR .125 x 2.50 x .500	1	--
6	5560031	PRU 188 x 2.125 x .375	1	--
7	5568018	WR .125 x 2.00 x .500	1	--
8	5562008	WPR .187 x 1.75	1	--

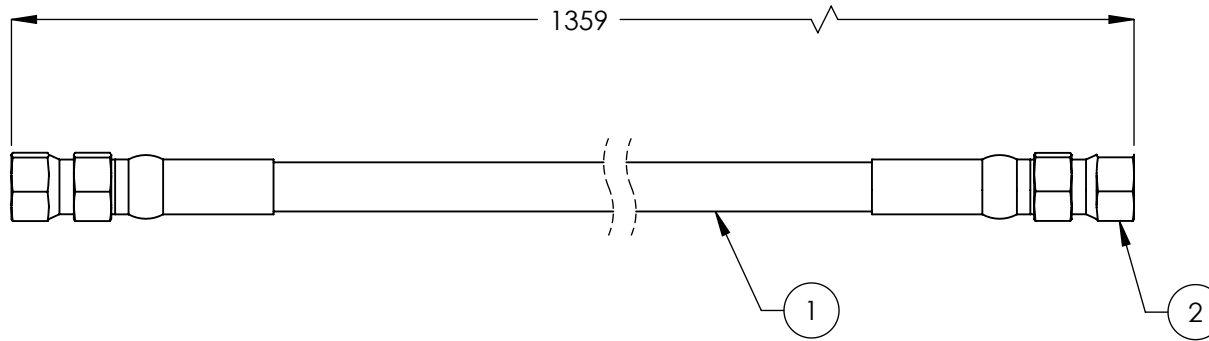
DO NOT SCALE DRAWING	NAME	DATE	1645 LEMONWOOD DR. SANTA PAULA, CA 93060	
DIMENSIONS ARE IN MM	DRAWN	AC		11/24/2009
	CHECKED	CA		05/02/2016
 	THIRD ANGLE PROJECTION		TITLE: CYLINDER ASSEMBLY Ø2.5 x 37 - Ø1.75 ROD	
	<small>PROPRIETARY AND CONFIDENTIAL THE INFORMATION CONTAINED IN THIS DRAWING IS THE SOLE PROPERTY OF BENDPAK INC. ANY REPRODUCTION IN PART OR AS A WHOLE WITHOUT THE WRITTEN PERMISSION OF BENDPAK INC. IS PROHIBITED.</small>		SCALE: 1:2	
	FOR USE WITH	SIZE DWG. NO.	REV	
XPR-9S	A 5502321	E		
XPR-9S-LP	SHEET 1 OF 2			

NOTE: UNLESS OTHERWISE SPECIFIED.

- GREASE SEALS PRIOR TO ASSEMBLY
- PRESSURE TEST CYLINDER ASSEMBLY 100% TO 3,600 PSI.(NO LEAKS)

 MARK IN APPROXIMATE LOCATION WITH THE FOLLOWING INFORMATION: MANUFACTURER MONTH/ YEAR PART NUMBER

REV	DESCRIPTION	REVISION	DATE	EDITED BY	ECO#
C	UPDATED TITLE TO REFLECT WHERE USED, UPDATED NEXT ASSEMBLY		02/06/2012	TM	00490
C-001	UPDATED NEXT ASSEMBLY		06/20/2013	TM	00605
C-002	UPDATED NEXT ASSEMBLY		08/19/2013	TM	00615
D	REPLACED 5570110 WITH 5570129 TO REFLECT INVENTORY, UPDATED TITLE TO REFLECT WHERE USED		11/24/2014	TM	00673
E	UPDATED TITLE TO REFLECT MARKETING, UPDATED NEXT ASSEMBLY		12/01/2015	TM	00738



ITEM NO.	PART NUMBER	DESCRIPTION	QTY.	REV
1	5570129	Ø6.4 ID HYDRAULIC HOSE	1293mm*	--
2	5550325	FTG NPL Ø1/4 CRIMP x -04 JIC	2	--

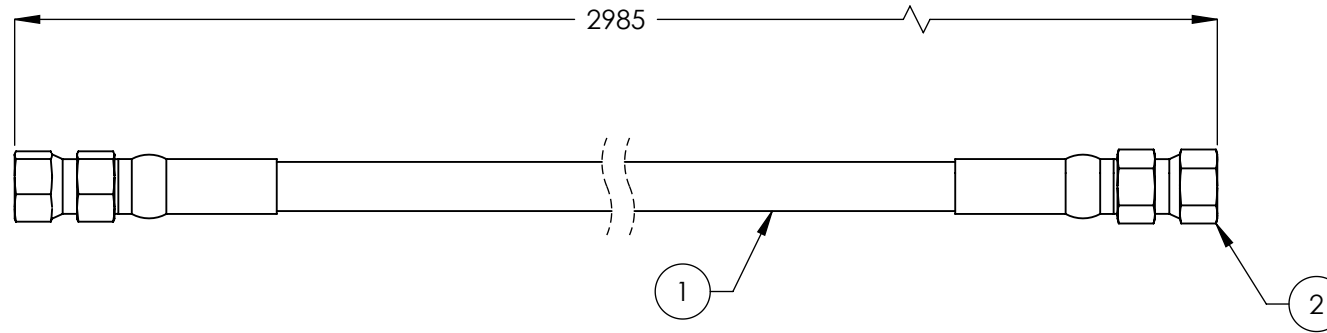
DO NOT SCALE DRAWING		NAME	DATE	1645 LEMONWOOD DR. SANTA PAULA, CA 93060
DIMENSIONS ARE IN MM TOLERANCES: 0. = ±1.5 0.0 = ±1.0 0.00 = ±0.25 0.000 = ±0.13 ANGULAR: MACH ±2° SURFACE FINISH 1.6 ISO R _a μm FOR MACHINED SURFACES UNLESS OTHERWISE SPECIFIED		DRAWN	GJ 10/13/2008	
		CHECKED	CA 02/22/2016	
		THIRD ANGLE PROJECTION		TITLE:
				XPR-9 HYDRAULIC HOSE ASSY Ø6.35 x 1359mm DS
		PROPRIETARY AND CONFIDENTIAL THE INFORMATION CONTAINED IN THIS DRAWING IS THE SOLE PROPERTY OF BENDPAK INC. ANY REPRODUCTION IN PART OR AS A WHOLE WITHOUT THE WRITTEN PERMISSION OF BENDPAK INC. IS PROHIBITED.		SIZE DWG. NO.
		A		5570103
				REV
				E
		SCALE: 1:2		SHEET 1 OF 1

NOTE: UNLESS OTHERWISE SPECIFIED.

- FOR ITEM 1 SPECIFICATIONS REFER TO PART SPECIFICATION FORM
- (*)ITEM 1 QTY FOR REFERENCE ONLY

NEXT ASSEMBLY
5250225

REVISION				
REV	DESCRIPTION	DATE	EDITED BY	ECO#
B	UPDATED TITLE TO REFLECT WHERE USED, UPDATED NEXT ASSEMBLY	02/06/2012	TM	00490
B-001	UPDATED NEXT ASSEMBLY	06/20/2013	TM	00605
B-002	UPDATED NEXT ASSEMBLY	09/30/2013	TM	00604
B-003	UPDATED NEXT ASSEMBLY	08/19/2013	TM	00615
C	REPLACED 5570110 WITH 5570129 TO REFLECT INVENTORY, UPDATED TITLE TO REFLECT WHERE USED	11/24/2014	TM	00673
D	UPDATED TITLE TO REFLECT MARKETING, UPDATED NEXT ASSEMBLY	12/01/2015	TM	00738



ITEM NO	PART NUMBER	DESCRIPTION	QTY	REV
1	5570129	Ø6.4 ID HYDRAULIC HOSE	1	A
2	5550325	FTG NPL Ø1/4 CRIMP x -04 JIC	2	A


DO NOT SCALE DRAWING		NAME	DATE	1645 LEMONWOOD DR. SANTA PAULA, CA 93060
DIMENSIONS ARE IN MM		DRAWN	TM 11/13/2009	
TOLERANCES:		CHECKED	CA 02/22/2016	
0. = ±1.5 0.0 = ±1.0 0.00 = ±0.25 0.000 = ±0.13 ANGULAR: MACH ±2° SURFACE FINISH 1.6 ISO Ra µm FOR MACHINED SURFACES UNLESS OTHERWISE SPECIFIED		THIRD ANGLE PROJECTION 		TITLE: SP-6FR, XPR-9 HYDRAULIC HOSE ASSY Ø6.35 x 2985mm DS
NEXT ASSEMBLY 5250037 5250026		PROPRIETARY AND CONFIDENTIAL THE INFORMATION CONTAINED IN THIS DRAWING IS THE SOLE PROPERTY OF BENDPAK INC. ANY REPRODUCTION IN PART OR AS A WHOLE WITHOUT THE WRITTEN PERMISSION OF BENDPAK INC. IS PROHIBITED.	SIZE DWG. NO. REV A 5570104 D	SCALE: 1:2 SHEET 1 OF 1

NOTE: UNLESS OTHERWISE SPECIFIED.

- FOR ITEM 1 SPECIFICATIONS REFER TO PART SPECIFICATION FORM
- (*)ITEM 1 QTY FOR REFERENCE ONLY

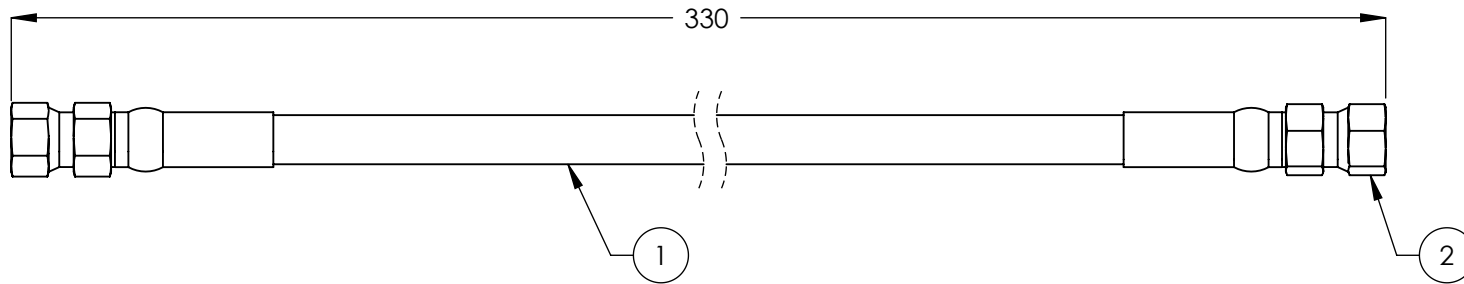
PART SPECIFICATION FORM

BENDPAK Number:	5570129
MRP Description:	1/4" HYDRAULIC HOSE 31CL-0400X
Date:	11/10/2015
ECO :	00734

1. Engineering Specification	
<u>Application:</u>	1/4" HYDRAULIC HOSE
<u>Detailed Description:</u>	
ONE or TWO BRAID STEEL WIRE HYDRAULIC HOSE	
SIZE: 1/4" / 6.3mm I.D. 0.53" / 13.4mm O.D.	
SPECS: 3000PSI OR 207 BAR WORKING PRESSURE 12000PSI OR 827 BAR MINIMUM BURST PRESSURE 2" / 50mm MIN BEND RADIUS	
COLOR: BLACK	

2. Vendor Information			
Approved Vendor	Vendor Part #	Contact #	Preferred Vendor
1) PARKER	387-4	02283962772	
2)			
OR BENDPAK ENGINEERING APPROVED EQUIVALENT			

REVISION				
REV	DESCRIPTION	DATE	EDITED BY	ECO#
C	UPDATED TITLE TO REFLECT WHERE USED AND NEXT ASSEMBLIES	10/07/2014	TM	00663
D	REPLACED 5570110 WITH 5570129 TO REFLECT INVENTORY	11/20/2014	TM	00673
E	UPDATED TITLE TO REFLECT WHERE USED, UPDATED NEXT ASSEMBLIES	07/22/2015	JM	00712
E-001	UPDATED NEXT ASSEMBLIES	02/22/2016	CA	00738



ITEM NO.	PART NUMBER	DESCRIPTION	QTY.	REV
1	5570129	Ø6.4 ID HYDRAULIC HOSE	264mm*	--
2	5550325	FTG NPL Ø1/4 CRIMP x -04 JIC	2	--

DO NOT SCALE DRAWING	NAME	DATE	1645 LEMONWOOD DR. SANTA PAULA, CA 93060
	DRAWN	TM 08/30/2010	
	CHECKED	CA 02/22/2016	

NEXT ASSEMBLY
5240821
5250031
5250032
5250037
5250038
5250048
5250243

DIMENSIONS ARE IN MM
 TOLERANCES:
 0. = ±1.5
 0.0 = ±1.0
 0.00 = ±0.25
 0.000 = ±0.13
 ANGULAR: MACH ±2°
 SURFACE FINISH 1.6 ISO Ra µm
 FOR MACHINED SURFACES
 UNLESS OTHERWISE SPECIFIED

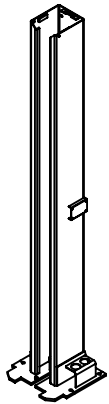
THIRD ANGLE PROJECTION

PROPRIETARY AND CONFIDENTIAL
 THE INFORMATION CONTAINED IN THIS DRAWING IS
 THE SOLE PROPERTY OF BENDPAK INC. ANY
 REPRODUCTION IN PART OR AS A WHOLE WITHOUT
 THE WRITTEN PERMISSION OF BENDPAK INC. IS
 PROHIBITED.

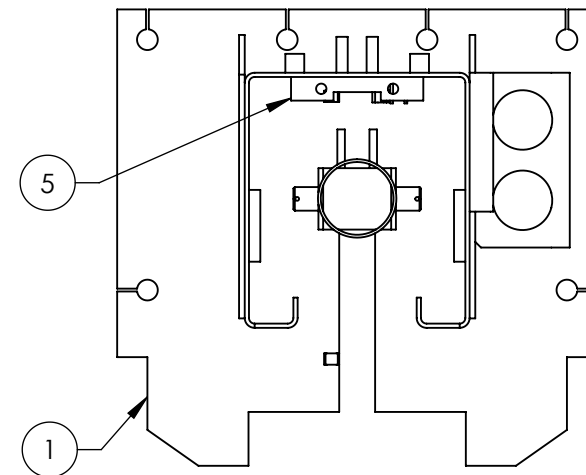
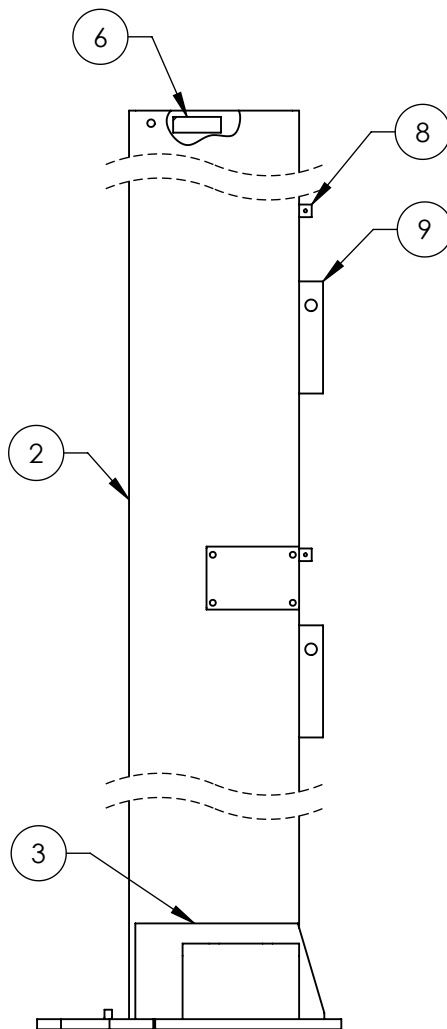
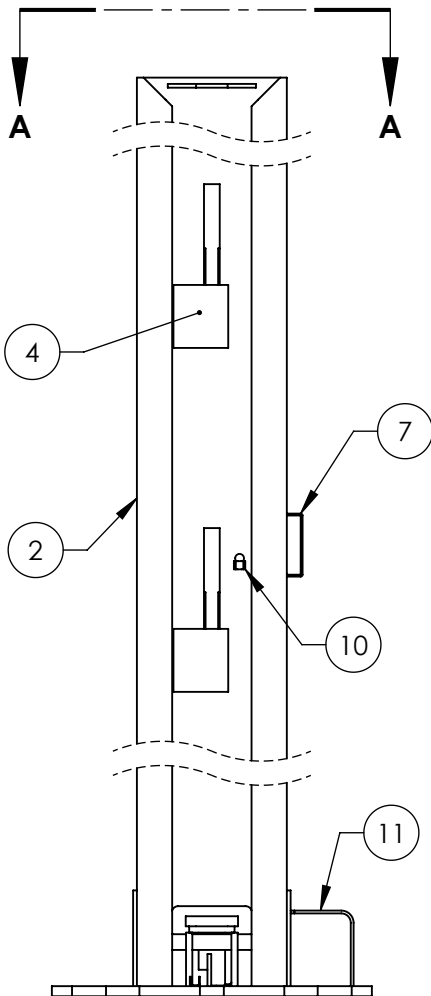
TITLE: MDS-6K, XPR-9D/10 HYDRAULIC HOSE ASSY Ø6.35 x 330mm DS	
SIZE DWG. NO.	REV
A 5570176	E
SCALE: 1:2	
SHEET 1 OF 1	

NOTE: UNLESS OTHERWISE SPECIFIED.

- FOR ITEM 1 SPECIFICATIONS REFER TO PART SPECIFICATION FORM
- (*)ITEM 1 QTY FOR REFERENCE ONLY



ISOMETRIC VIEW
FOR REFERENCE ONLY
DO NOT SCALE



SECTION A-A
SCALE 1 : 8

REV	DESCRIPTION	REVISION	DATE	EDITED BY	ECO#
G	UPDATED BOM REVISION		06/17/2013	TM	00605
H	TIGHTENED TOLERANCE OF DISTANCE OF 5736635, UPDATED BOM REVISION		11/20/2014	TM	00673
J	ADDED 5230075, UPDATED TITLE TO REFLECT MARKETING, UPDATED BOM REVISIONS		11/23/2015	TM	00738

ITEM NO	PART NUMBER	DESCRIPTION	QTY	REV
1	5620043	XPR-9 POWER SIDE BASE PLATE WELDMNT	1	E
2	5701213	XPR-9 POWER SIDE BARE POST	1	H
3	5730103	XPR-9/10 POST GUSSET	2	C
4	5735228	XPR STIFFENING PLATE	2	B
5	5701457	XPR TOP TROUGH TIE PLATE	1	C
6	5735700	XPR TOP TROUGH SUPPORT	2	C
7	5700001	MOUNTING BRACKET	1	B
8	5760001	SAFETY COVER BLOCK	4	C
9	5736635	RTL/XPR SAFETY RELEASE PLATE	4	C
10	5210004	GP/PCL/XPR SAFETY SHEAVE CLAMP	1	C
11	5730075	XPR POST ASSEMBLY LIFT HEAD FOOT GUARD	1	A

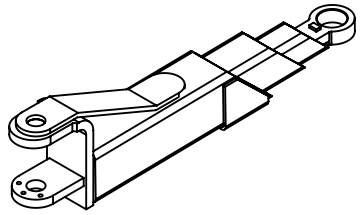
NOTE: UNLESS OTHERWISE SPECIFIED.

- BREAK AND DEBURR ALL SHARP EDGES 0.3mm.
- REMOVE ALL WELD SPLATTER.
- PAINT BENDPAK BLUE

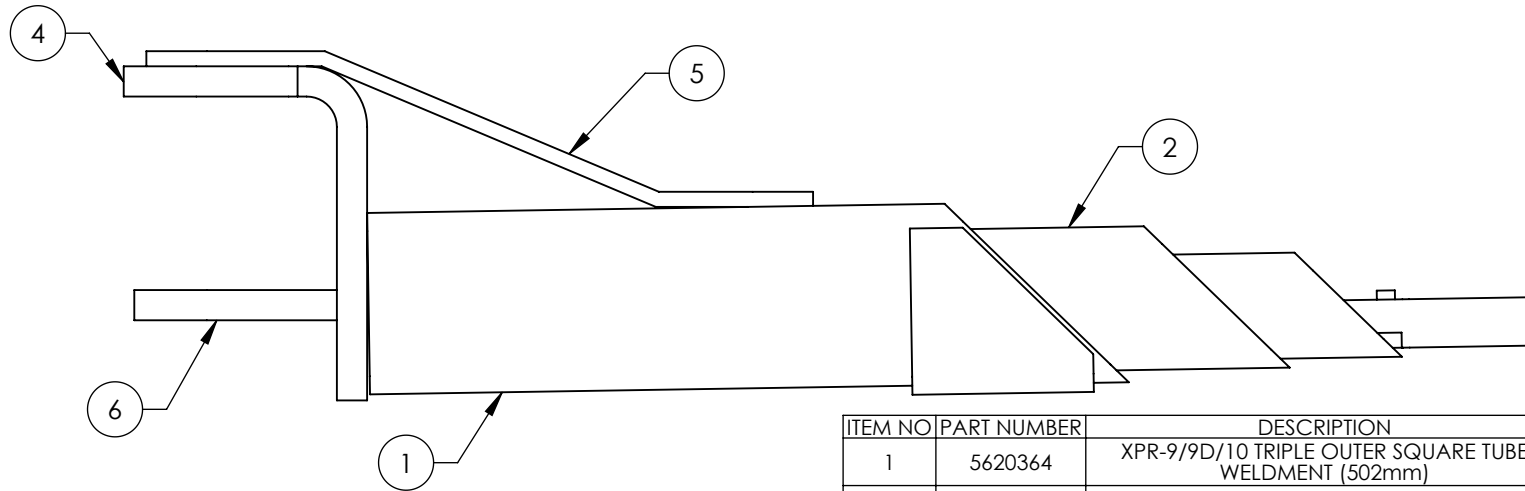
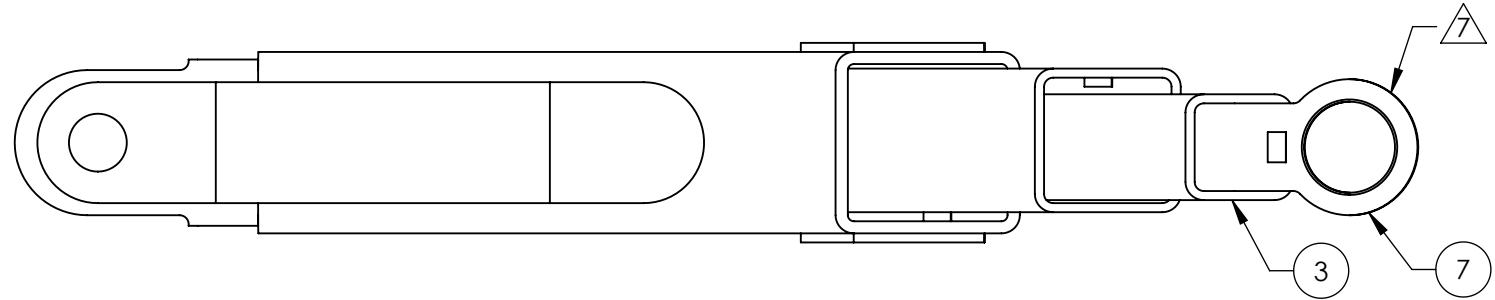
NEXT ASSEMBLY
5215392

DO NOT SCALE DRAWING	NAME	DATE	1645 LEMONWOOD DR. SANTA PAULA, CA 93060
	DRAWN	AC 11/24/2009	
	CHECKED	CA 02/16/2016	
DIMENSIONS ARE IN MM TOLERANCES: 0. = ±1.5 0.0 = ±0.5	THIRD ANGLE PROJECTION		TITLE: XPR-9S POWER SIDE POST WELDMNT
ANGULAR: 0. = ±2°			SIZE DWG. NO.
SURFACE FINISH 1.6 ISO Ra μm FOR MACHINED SURFACES UNLESS OTHERWISE SPECIFIED			REV
	PROPRIETARY AND CONFIDENTIAL THE INFORMATION CONTAINED IN THIS DRAWING IS THE SOLE PROPERTY OF BENDPAK INC. ANY REPRODUCTION IN PART OR AS A WHOLE WITHOUT THE WRITTEN PERMISSION OF BENDPAK INC. IS PROHIBITED.		A 5600369 J
	SCALE: 1:12		SHEET 1 OF 3

REVISION				
REV	DESCRIPTION	DATE	EDITED BY	ECO#
A	PRODUCTION RELEASE, DERIVED FROM 5600424	06/23/2015	JM	00708
B	REPLACED 5736906 WITH 5601026	09/22/2015	TM	00729
C	UPDATED BOM REVISION	03/22/2016	TM	00750



ISOMETRIC VIEW
FOR REFERENCE ONLY
DO NOT SCALE



ITEM NO	PART NUMBER	DESCRIPTION	QTY	REV
1	5620364	XPR-9/9D/10 TRIPLE OUTER SQUARE TUBE WELDMENT (502mm)	1	D
2	5620365	XPR-9/9D/10 TRIPLE MIDDLE SQUARE TUBE WELDMENT (502mm)	1	D
3	5620326	XPR-9/9D/10 TRIPLE ARM LOW PROFILE INNER SQUARE TUBE WELDMENT (502mm)	1	A
4	5701153	XPR-9/10 ARM EAR	1	D
5	5736286	XPR 9/10 TRIPLE ARM SUPPORT	1	C
6	5701068	XPR-9/10 BOLT ON EAR PLATE	1	E
7	5736906	ARM ADAPTOR 58mm WIDE WELDMENT	1	B

NOTE: UNLESS OTHERWISE SPECIFIED.

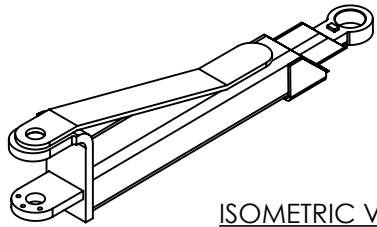
1. BREAK AND DEBURR ALL SHARP EDGES 0.3mm
2. REMOVE ALL WELD SPLATTER
3. MASK ALL THREADED HOLES AND BORES
4. DIMENSIONS SHOWN ARE AFTER PAINTING
5. PAINT BENDPAK YELLOW
6. 5620326 & 5620365 MUST SLIDE FREELY



WELD 5736906 TO 5620326 AFTER INSTALLING 5620326 THROUGH 5620365 AS SHOWN.

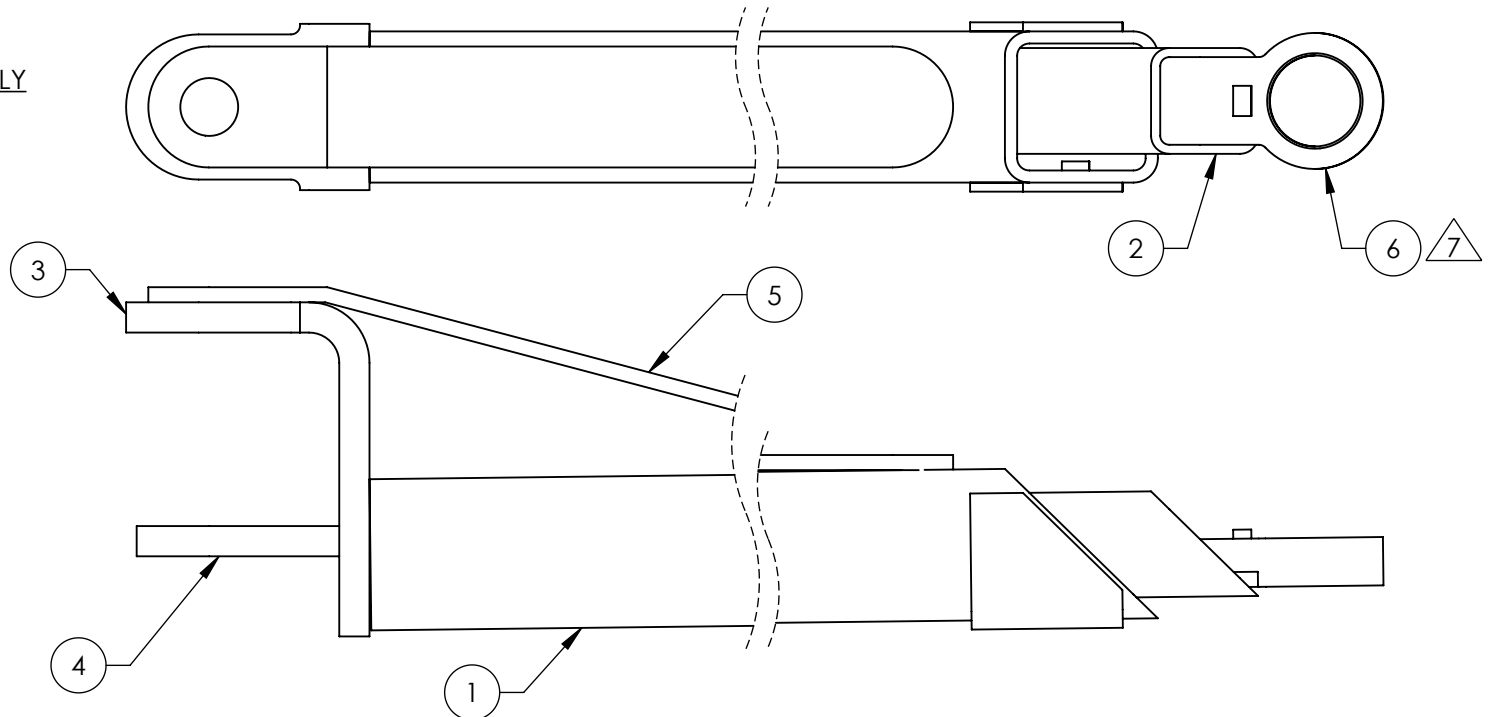
NEXT ASSEMBLY
5215287

DO NOT SCALE DRAWING	NAME	DATE	1645 LEMONWOOD DR. SANTA PAULA, CA 93060
DIMENSIONS ARE IN MM TOLERANCES: 0. = ±1.5 0.0 = ±0.5 ANGULAR: 0. = ±2° SURFACE FINISH 1.6 ISO Ra μm FOR MACHINED SURFACES UNLESS OTHERWISE SPECIFIED	DRAWN	JM 06/23/2015	
	CHECKED	CA 04/26/2016	
THIRD ANGLE PROJECTION		TITLE:	
		XPR-9/9D/10 LOW PROFILE TRIPLE TELESCOPING ARM WELDMENT	
PROPRIETARY AND CONFIDENTIAL THE INFORMATION CONTAINED IN THIS DRAWING IS THE SOLE PROPERTY OF BENDPAK INC. ANY REPRODUCTION IN PART OR AS A WHOLE WITHOUT THE WRITTEN PERMISSION OF BENDPAK INC. IS PROHIBITED.		SIZE DWG. NO.	REV
		A 5600997	C
SCALE: 1:5			SHEET 1 OF 3



ISOMETRIC VIEW
FOR REFERENCE ONLY
DO NOT SCALE

REVISION				
REV	DESCRIPTION	DATE	EDITED BY	ECO#
A	PRODUCTION RELEASE, DERIVED FROM 5600423	06/23/2015	JM	00708
B	REPLACED 5736906 WITH 5601026	09/22/2015	TM	00729
C	UPDATED TITLE TO REFLECT MARKETING, UPDATED BOM REVISION	03/22/2016	TM	00750



ITEM NO	PART NUMBER	DESCRIPTION	QTY	REV
1	5620363	XPR-9/9D/10 OUTER SQUARE TUBE WELDMENT (676mm)	1	D
2	5620327	XPR-9/9D/10 LOW PROFILE TWO STAGE INNER ARM WELDMENT (676mm)	1	A
3	5701153	XPR-9/10 ARM EAR	1	D
4	5701068	XPR-9/10 BOLT ON EAR PLATE	1	E
5	5736283	XPR-9/9D/10 EXTRA LONG ARM SUPPORT	1	D
6	5601026	ARM ADAPTOR 58mm WIDE WELDMENT	1	B

NOTE: UNLESS OTHERWISE SPECIFIED.

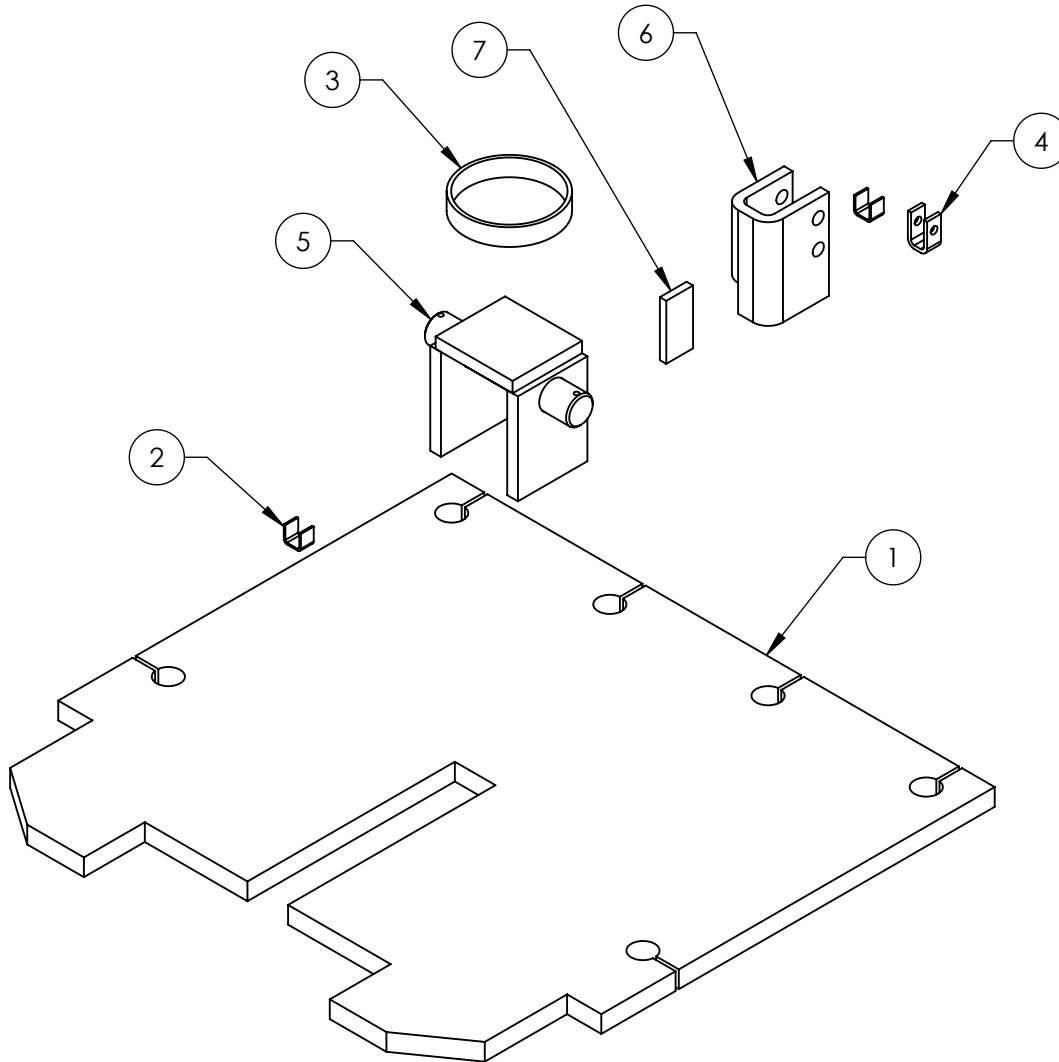
1. BREAK AND DEBURR ALL SHARP EDGES 0.3mm
2. REMOVE ALL WELD SPLATTER
3. MASK ALL THREADED HOLES AND BORES
4. DIMENSIONS SHOWN ARE AFTER PAINTING
5. PAINT BENDPAK YELLOW
6. 5620327 MUST SLIDE FREELY
7. WELD 5736906 TO 5620327 AFTER INSTALLING 5620327 THROUGH 5620363 AS SHOWN.

NEXT ASSEMBLY
5215700

DO NOT SCALE DRAWING	NAME	DATE	BendPak. 1645 LEMONWOOD DR. SANTA PAULA, CA 93060 <small>PROVIDING AUTOMOTIVE SERVICE SOLUTIONS</small>
DIMENSIONS ARE IN MM TOLERANCES: 0. = ±1.5 0.0 = ±0.5 ANGULAR: 0. = ±2° SURFACE FINISH 1.6 ISO Ra μm FOR MACHINED SURFACES UNLESS OTHERWISE SPECIFIED	DRAWN	JM 06/23/2015	
	CHECKED	CA 04/26/2016	
THIRD ANGLE PROJECTION		TITLE: XPR-9S/9DS/10S LOW PROFILE MEDIUM ARM WELDMENT	
		SIZE DWG. NO.	REV
		A 5600998	C
SCALE: 1:5			SHEET 1 OF 3

PROPRIETARY AND CONFIDENTIAL
THE INFORMATION CONTAINED IN THIS DRAWING IS THE SOLE PROPERTY OF BENDPAK INC. ANY REPRODUCTION IN PART OR AS A WHOLE WITHOUT THE WRITTEN PERMISSION OF BENDPAK INC. IS PROHIBITED.

REVISION				
REV	DESCRIPTION	DATE	EDITED BY	ECO#
C	UPDATED TITLE TO REFLECT WHERE USED, UPDATED BOM REVISIONS	06/02/2010	TM	00367
D	UPDATED TITLE TO REFLECT WHERE USED, UPDATED BOM REVISIONS	02/01/2012	TM	00490
D-001	CLARIFIED WELD FOR 570219	06/02/2014	TM	00649
E	UPDATED TITLE TO REFLECT MARKETING, UPDATED BOM REVISIONS	11/30/2015	TM	00738


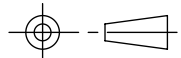


NOTE: UNLESS OTHERWISE SPECIFIED.

1. BREAK AND DEBURR ALL SHARP EDGES 0.3mm
2. REMOVE ALL WELD SPLATTER

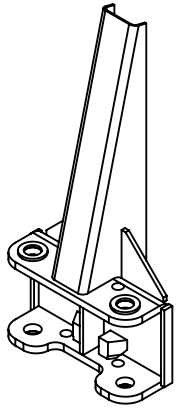
NEXT ASSEMBLY
5600369

ITEM NO	PART NUMBER	DESCRIPTION	QTY	REV
1	5736081	XPR-9 BASE PLATE	1	D
2	5700699	SMALL HOSE RETAINER	2	A
3	5755052	RTL-8000, XPR-9 CYLINDER TUBE SUPPORT	1	E
4	5210004	GP/PCL/XPR SAFETY SHEAVE CLAMP	1	C
5	5620361	XPR-9 BASE PLATE SHEAVE BRACKET WELDMENT	1	D
6	5701219	XPR-9 BASE PLATE CHAIN CONNECTOR BRACKET	1	D
7	5735236	XPR-9 BASE PLATE SHEAVE BRACKET WELDMENT GUSSET	1	D

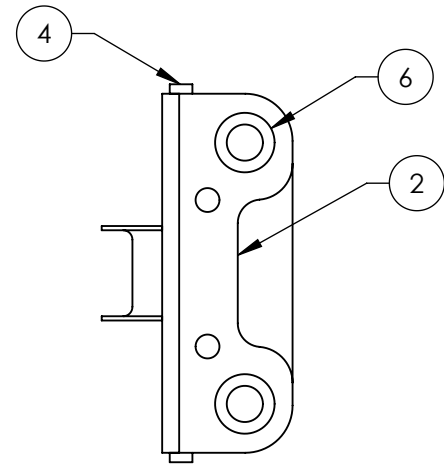
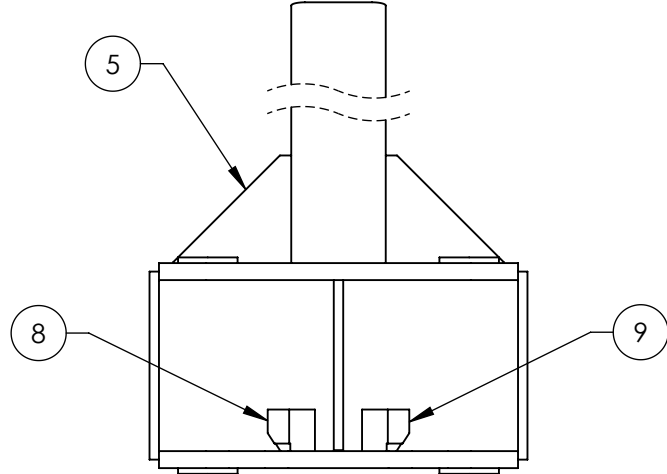
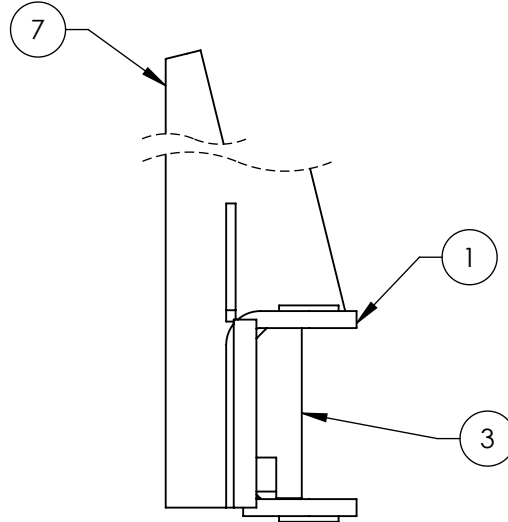
DO NOT SCALE DRAWING	NAME	DATE	 BendPak 1645 LEMONWOOD DR. SANTA PAULA, CA 93060
DIMENSIONS ARE IN MM TOLERANCES: 0. = ±1.5 0.0 = ±0.5 ANGULAR: 0. = ±2° SURFACE FINISH 1.6 ISO Ra μm FOR MACHINED SURFACES UNLESS OTHERWISE SPECIFIED	DRAWN	AC 11/24/2009	
	CHECKED	CA 02/12/2016	
THIRD ANGLE PROJECTION			
TITLE:			XPR-9 POWER SIDE BASE PLATE WELDMENT
SIZE DWG. NO.		REV	
A 5620043		E	
SCALE: 1:5			SHEET 1 OF 2

PROPRIETARY AND CONFIDENTIAL
THE INFORMATION CONTAINED IN THIS DRAWING IS
THE SOLE PROPERTY OF BENDPAK INC. ANY
REPRODUCTION IN PART OR AS A WHOLE WITHOUT
THE WRITTEN PERMISSION OF BENDPAK INC. IS
PROHIBITED.

REVISION				
REV	DESCRIPTION	DATE	EDITED BY	ECO#
E	UPDATED BOM REVISIONS	02/13/2014	TM	00640
F	UPDATED BOM REVISIONS	06/03/2014	TM	00649
F-001	UPDATED NEXT ASSEMBLY	10/15/2015	HG	00732
G	UPDATED BOM REVISIONS	11/23/2015	TM	00738



ISOMETRIC VIEW
FOR REFERENCE ONLY
DO NOT SCALE



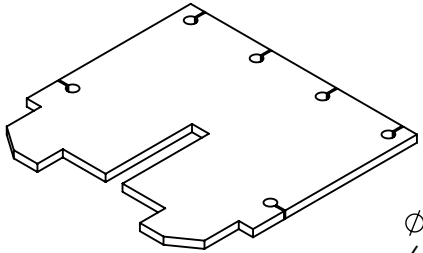
ITEM NO	PART NUMBER	DESCRIPTION	QTY	REV
1	5701230	XPR-9/10 LIFT HEAD TOP ARM PLATE	1	E
2	5736263	XPR-9/10 LIFT HEAD BOTTOM ARM PLATE	1	E
3	5736261	GP-7, XPR-9/10 LIFT HEAD PLATE SPACER	1	C
4	5735243	GP-7, XPR-9/10 LIFT HEAD ARM PLATE SUPPORT	2	C
5	5736259	ALL GP/XPR LIFT HEAD SIDE GUSSET	2	B
6	5746564	XPR-9/10/12 REINFORCING WASHER	4	E
7	5700186	XPR-9/10 LIFT HEAD GUSSET	1	B
8	5736543	2 POST LIGHT DUTY ARM GEAR RESTRAINT STOP LH	1	A
9	5736545	2 POST LIGHT DUTY ARM GEAR RESTRAINT STOP RH	1	A

DO NOT SCALE DRAWING		NAME	DATE	1645 LEMONWOOD DR. SANTA PAULA, CA 93060
		DRAWN	TM 11/24/2009	
		CHECKED	CA 02/11/2016	
DIMENSIONS ARE IN MM TOLERANCES: 0. = ±1.5 0.0 = ±0.5 ANGULAR: 0. = ±2°		THIRD ANGLE PROJECTION 		TITLE: XPR-9/10 LIFT HEAD GUSSET WELDMENT
NEXT ASSEMBLY 5600502 5600503 5600508 5601040		SURFACE FINISH 1.6 ISO Ra μm FOR MACHINED SURFACES UNLESS OTHERWISE SPECIFIED		SCALE: 1:8 SHEET 1 OF 2
		PROPRIETARY AND CONFIDENTIAL THE INFORMATION CONTAINED IN THIS DRAWING IS THE SOLE PROPERTY OF BENDPAK INC. ANY REPRODUCTION IN PART OR AS A WHOLE WITHOUT THE WRITTEN PERMISSION OF BENDPAK INC. IS PROHIBITED.		SIZE DWG. NO. REV A 5620371 G

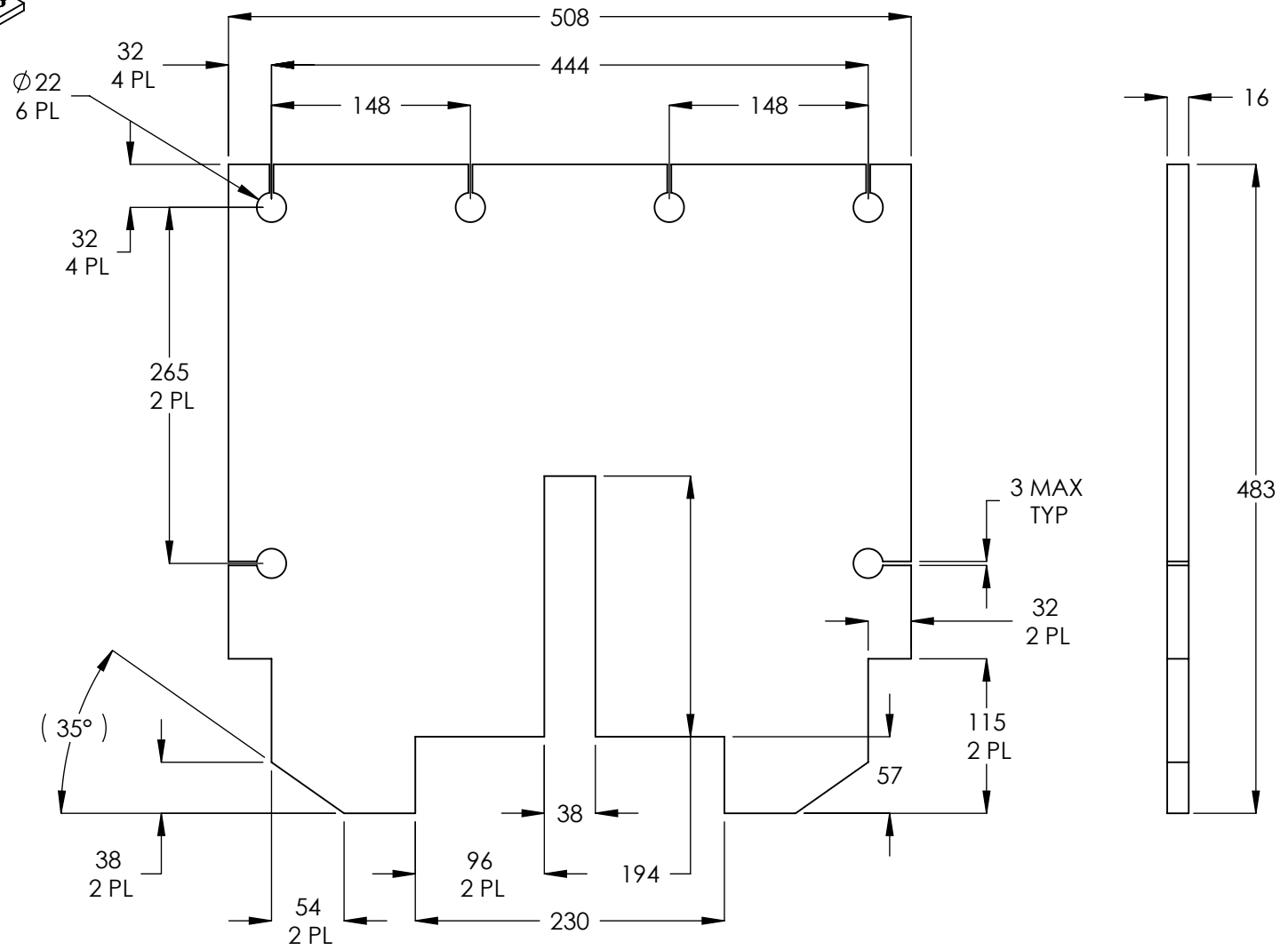
NOTE: UNLESS OTHERWISE SPECIFIED.

- BREAK AND DEBURR ALL SHARP EDGES 0.3mm
- REMOVE ALL WELD SPLATTER

REVISION				
REV	DESCRIPTION	DATE	EDITED BY	ECO#
B	UPDATED TITLE TO REFLECT WHERE USED	06/01/2010	TM	00367
C	UPDATED TITLE TO REFLECT WHERE USED	02/01/2012	TM	00490
D	UPDATED TITLE TO REFLECT MARKETING	11/30/2015	TM	00738



ISOMETRIC VIEW
FOR REFERENCE ONLY
DO NOT SCALE



- NOTE: UNLESS OTHERWISE SPECIFIED.**
- BREAK AND DEBURR ALL SHARP EDGES 0.3mm
 - MATERIAL:** ASTM A36 OR Q235 GB/T 700

NEXT ASSEMBLY
5620042
5620043

DO NOT SCALE DRAWING	NAME	DATE	1645 LEMONWOOD DR. SANTA PAULA, CA 93060	
DIMENSIONS ARE IN MM TOLERANCES: MACHINE TO 0 = ±1.5 0.0 = ±0.5 0.00 = ±0.13 ANGULAR: MACHINE TO 0 = ±1/2° SURFACE FINISH 1.6 Ra μm FOR MACHINED SURFACES UNLESS OTHERWISE SPECIFIED	DRAWN	TM		08/24/2009
	CHECKED	CA		02/09/2016
THIRD ANGLE PROJECTION				TITLE:
				XPR-9 BASE PLATE
		PROPRIETARY AND CONFIDENTIAL THE INFORMATION CONTAINED IN THIS DRAWING IS THE SOLE PROPERTY OF BENDPAK INC. ANY REPRODUCTION IN PART OR AS A WHOLE WITHOUT THE WRITTEN PERMISSION OF BENDPAK INC. IS PROHIBITED.		SIZE DWG. NO.
		A		5736081
				REV
				D
		SCALE: 1:5		SHEET 1 OF 1

PART SPECIFICATION FORM

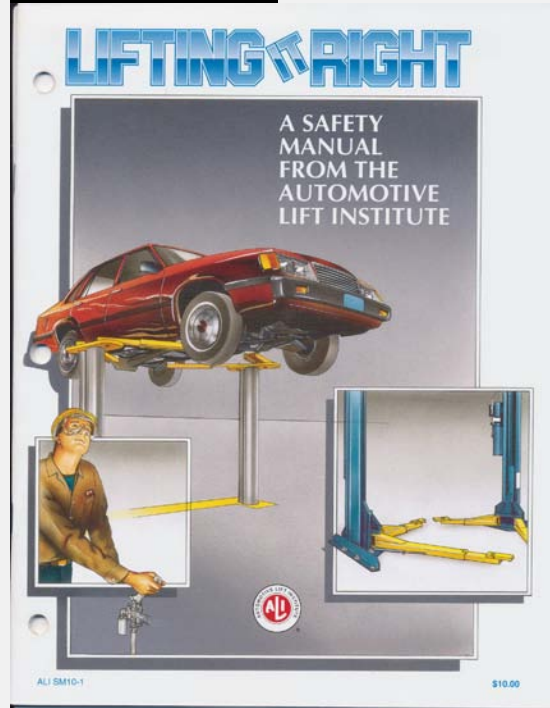
BENDPAK Number:	5900147
MRP Description:	SAFETY MANUAL ALI / SM 93-1
Date:	12/28/2010
ECO :	00431

1. Engineering Specification

Application:

ALI SAFETY MANUAL

Detailed Description:



2. Vendor Information

Approved Vendor	Vendor Part #	Contact #	Preferred Vendor
1)			

PART SPECIFICATION FORM

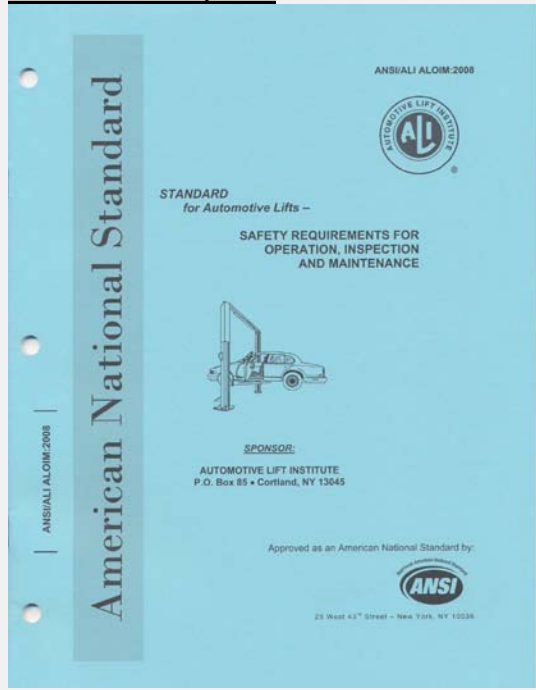
BENDPAK Number:	5900152
MRP Description:	ALIGN OIM OPERATION INSPECTION & MAINTENANCE
Date:	12/28/2010
ECO :	00431

1. Engineering Specification

Application:

ALI OPERATION INSPECTION & MAINTENANCE MANUAL

Detailed Description:



2. Vendor Information

Approved Vendor	Vendor Part #	Contact #	Preferred Vendor
1)			

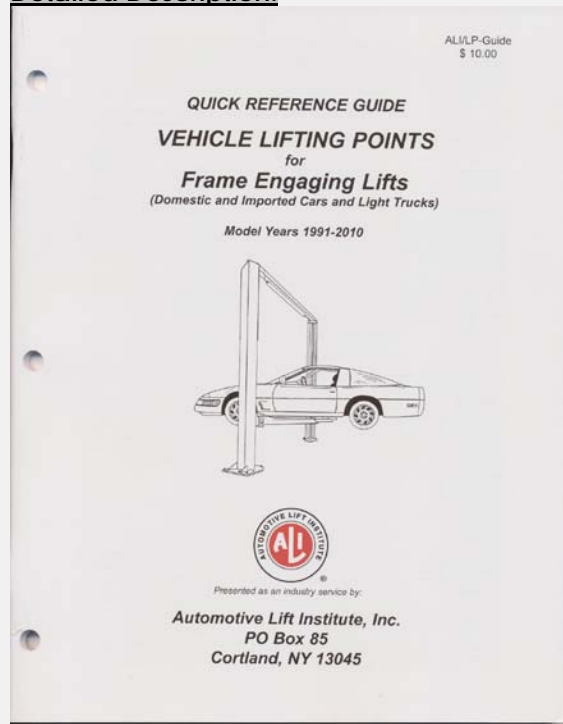
PART SPECIFICATION FORM

BENDPAK Number:	5900280
MRP Description:	ALI/LP FRAME ENGAGING LIFTS GUIDE
Date:	12/28/2010
ECO :	00431

1. Engineering Specification

Application:
 ALI LIFTING GUIDE

Detailed Description:



2. Vendor Information

Approved Vendor	Vendor Part #	Contact #	Preferred Vendor
1)			

PART SPECIFICATION FORM

BENDPAK Number:	5900371
MRP Description:	XPR-9S INSTALLATION MANUAL
Date:	03/15/2016
ECO :	00750

1. Engineering Specification

Application:

INSTALLATION MANUAL

Detailed Description:

WARNING

EUROPEAN USERS

400V 50Hz SUPPLY DETAILS ARE INCLUDED WITH ELECTRICAL CONTROL BOX. DISREGARD SUPPLY WIRING DETAILS IN THIS MANUAL.

IMPORTANT SAFETY INSTRUCTIONS

SAVE THESE INSTRUCTIONS

PLEASE READ THE ENTIRE CONTENTS OF THIS MANUAL PRIOR TO INSTALLATION AND OPERATION. BY PROCEEDING WITH LIFT INSTALLATION AND OPERATION YOU AGREE THAT YOU FULLY UNDERSTAND AND COMPREHEND THE FULL CONTENTS OF THIS MANUAL. FORWARD THIS MANUAL TO ALL OPERATORS. FAILURE TO OPERATE THIS EQUIPMENT AS DIRECTED MAY CAUSE INJURY OR DEATH.

MAN REV. C 01-15-2016
PIN 5900371

INSTALLATION AND OPERATION MANUAL

9,000 LB / 4,082 KG CAPACITY
SURFACE MOUNTED TWO-POST LIFTS

MODELS:
XPR-9S
XPR-9S-LP
XPR-9TS

READ FIRST



Do not operate this machine until you read and understand all the dangers, warnings and cautions in this manual.



CE

ORIGINAL INSTRUCTIONS IN ENGLISH LANGUAGE

RECEIVING
The shipment should be thoroughly inspected as soon as it is received. The signed Bill of Lading is acknowledgement by the shipping carrier as receipt of this product as listed in your invoice as being in a good condition of shipment. If any of these goods listed on this Bill of Lading are missing or damaged, do not accept goods until the shipping carrier makes a notation on the freight bill of the missing or damaged goods. Do this for your own protection.

BE SAFE
Your new lift was designed and built with safety in mind. However, your overall safety can be increased with proper training and thoughtful operation on the part of the operator. DO NOT operate or repair this equipment without reading this manual and the important safety instructions shown inside. Keep this operation manual near the lift at all times. Make sure that ALL USERS read and understand this manual.



1645 Lemonwood Dr.
Santa Paula, CA. 93060, USA
Toll Free 1-800-253-2363
Tel: 1-805-933-9970
Fax: 1-805-933-9160
www.bendpak.com

2. Vendor Information

Approved Vendor	Vendor Part #	Contact #	Preferred Vendor
1)			

PART SPECIFICATION FORM

BENDPAK Number:	5905109
MRP Description:	WARNING ALI/WL 101
Date:	06/18/2013
ECO :	00605

1. Engineering Specification

Application:

ALI 2 POST SAFETY STICKER KIT

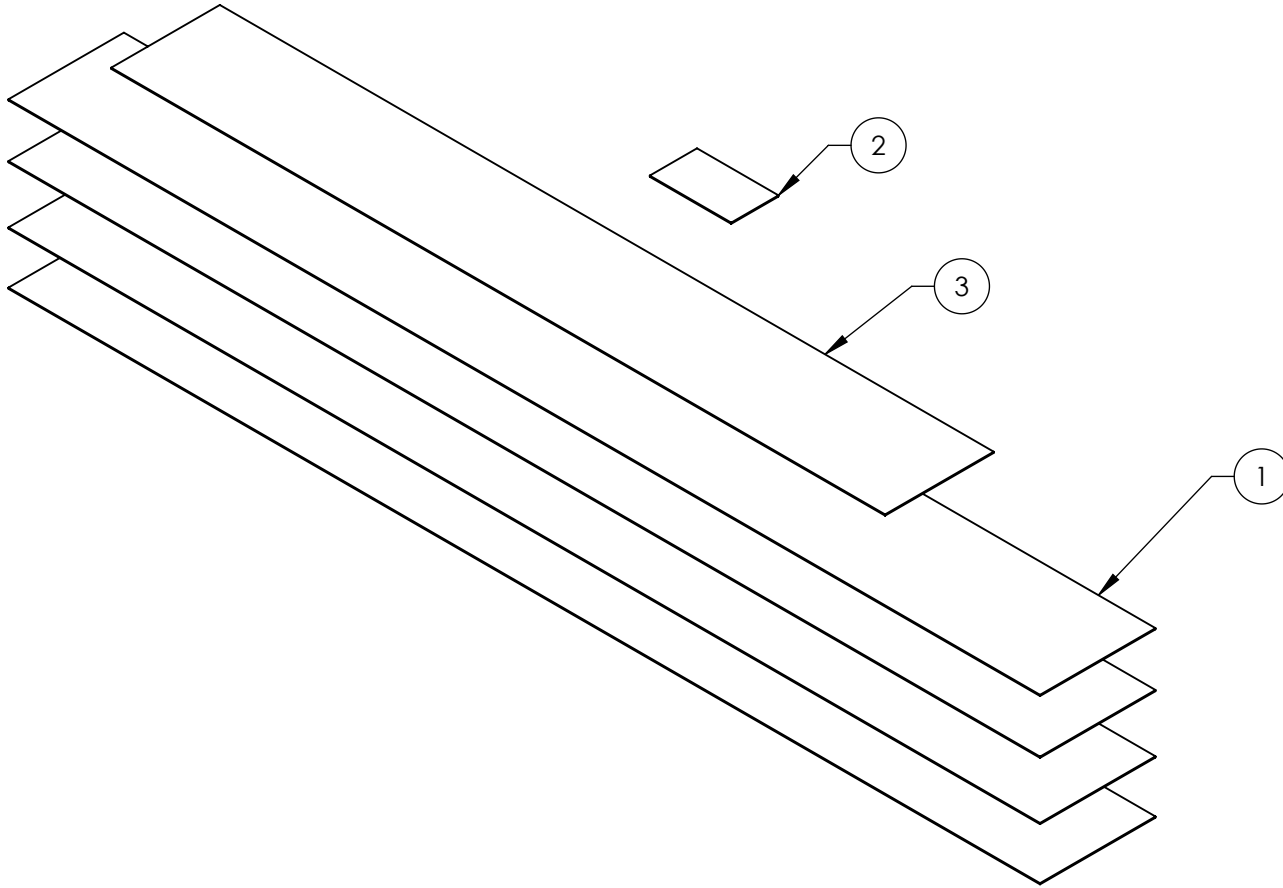
Detailed Description:

SIZE: 14" L x 8.5" W (356mm x 216mm)



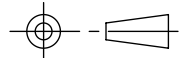
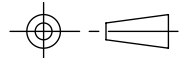
2. Vendor Information

Approved Vendor	Vendor Part #	Contact #	Preferred Vendor
1)			

		REVISION		
REV	DESCRIPTION	DATE	EDITED BY	ECO#
A	DERIVED FROM 5905200	06/20/2013	TM	00605
B	REPLACED 5905105 WITH 5905311	05/13/2105	TM	00689
C	ADDED (2) 5905311	12/29/2015	TM	00738



ITEM NO	PART NUMBER	DESCRIPTION	QTY	REV
1	5905311	BENDPAK LABEL; 4 x 38" WHITE INK	4	--
2	5905177	TO PROLONG LIFE OF TWO	1	--
3	5905555	2-POST SAFETY DECAL	1	--

DO NOT SCALE DRAWING		NAME	DATE	 BendPak. 1645 LEMONWOOD DR. <small>HOVING AND/OR KICKER SOURCE</small> SANTA PAULA, CA 93060
DIMENSIONS ARE IN MM		DRAWN	TM 06/18/2013	
		CHECKED	CA 02/04/2016	
		THIRD ANGLE PROJECTION		TITLE:
				2 POST DECAL KIT, LESS ALL
		<small>PROPRIETARY AND CONFIDENTIAL THE INFORMATION CONTAINED IN THIS DRAWING IS THE SOLE PROPERTY OF BENDPAK INC. ANY REPRODUCTION IN PART OR AS A WHOLE WITHOUT THE WRITTEN PERMISSION OF BENDPAK INC. IS PROHIBITED.</small>		SIZE DWG. NO.
				A 5905131
				REV
				C
		SCALE: 1:5		SHEET 1 OF 1

NOTE: UNLESS OTHERWISE SPECIFIED.

1. SEE RECEIVED LIFT FOR PLACEMENT

NEXT ASSEMBLY
ALL 2-POST LIFTS

PART SPECIFICATION FORM

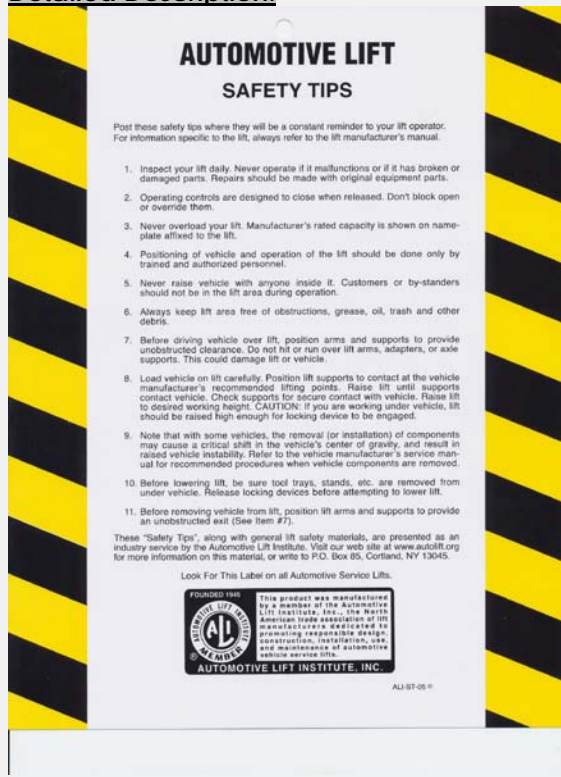
BENDPAK Number:	5905151
MRP Description:	SAFETY TIPS CARD ALI-ST 90
Date:	12/28/2010
ECO :	00431

1. Engineering Specification

Application:

ALI SAFETY TIPS

Detailed Description:



2. Vendor Information

Approved Vendor	Vendor Part #	Contact #	Preferred Vendor
1)			

PART SPECIFICATION FORM

BENDPAK Number:	5905177
MRP Description:	TO PROLONG LIFT OF TWO
Date:	06/18/2013
ECO :	00605

1. Engineering Specification
<p><u>Application:</u> RED CYLINDER WARNING</p> <p><u>Detailed Description:</u> <u>SIZE:</u> 3" L x 1.75" W (76mm x 44mm)</p> <div style="text-align: center; border: 1px solid black; padding: 10px; margin: 10px auto; width: 80%;"> <div style="background-color: red; color: white; padding: 5px; font-weight: bold; font-size: 1.2em;">PLEASE READ</div> <p style="color: white; font-size: 1.1em; margin-top: 5px;">Internal packing oil may cause the cylinders to bleed oil during start up. This is normal. To extend cylinder and seal life, raise the lift to full height at least once every day.</p> </div>

2. Vendor Information			
Approved Vendor	Vendor Part #	Contact #	Preferred Vendor
1)			

PART SPECIFICATION FORM

BENDPAK Number:	5905311
MRP Description:	BENDPAK LABEL; 4 x 38" WHITE INK
Date:	05/13/2015
ECO :	00689

1. Engineering Specification

Application:

BENDPAK LABEL

Detailed Description:



SIZE: 38" L x 4.25" W (965mm x 108mm)

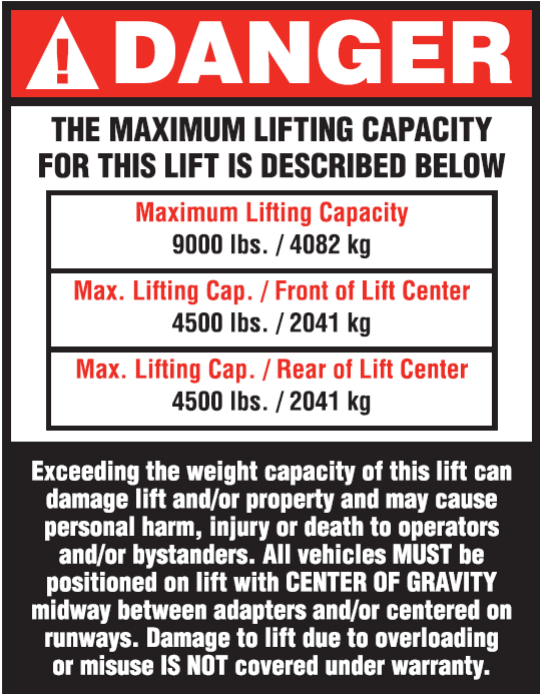
- Material: Yellow Represents Clear Adhesive PET
- Size: 4.25"W x 38"H
- Thickness: 4 Mil
- Finish: Polished
- Ink: U.V. protected, Opaque White
- Print Process: Silk Screen, 85 line-screen (Opaque White ink, clear adhesive PET will fill in blank areas.)
- Lamination: Clear-gloss over-laminate for abrasion, chemical, and ultra violet protection

2. Vendor Information

Approved Vendor	Vendor Part #	Contact #	Preferred Vendor
1)			

PART SPECIFICATION FORM

BENDPAK Number:	5905402
MRP Description:	MAX CAP DANGER
Date:	12/10/2015
ECO :	00724

1. Engineering Specification	
<u>Application:</u> LIFT CAPACITY STICKER	
<u>Detailed Description:</u>	
 <p style="font-size: small; text-align: right;">P/N 5905402</p>	<p>Size: 4"W x 5"H Material: White Vinyl Pressure Sensitive Adhesive Thickness: 4 Mil Ink: U.V. protected CMYK 2/C Process Finish: Polished Print Process: Offset Lithography - 200 line-screen or 300 p.p.i. for digital Lamination: Clear-gloss over-laminate for abrasion, chemical, and ultra violet protection</p>

2. Vendor Information			
Approved Vendor	Vendor Part #	Contact #	Preferred Vendor
1)			

PART SPECIFICATION FORM

BENDPAK Number:	5905465
MRP Description:	MANUFACTURER LABEL
Date:	05/07/2013
ECO :	00593

1. Engineering Specification

Application:

MANUFACTURER LABEL

Detailed Description:

MFD. BY BENDPAK INC.

LIFT TYPE: SURFACE MOUNT CAPACITY: MED/HVY DTY
 POWER: ELECTRIC/HYDRAULIC ANCHORS: AS EQUIPPED
 INSTALLATION – SEE OWNERS GUIDE OR CONTACT FACTORY

SIZE: 5.125" L x 5.125" W (130mm x 130mm)

SHIPPING DAMAGE CLAIMS
 WHEN THIS EQUIPMENT IS SHIPPED, TITLE PASSES TO THE PURCHASER UPON RECEIPT FROM THE CARRIER. CONSEQUENTLY, CLAIMS FOR THE MATERIAL DAMAGED IN SHIPMENT MUST BE MADE BY THE PURCHASER AGAINST THE TRANSPORTATION COMPANY AT THE TIME SHIPMENT IS RECEIVED.

PLEASE READ ALL OPERATORS/USERS MANUAL(S) PRIOR TO INSTALLATION AND OPERATION. UNDERSTAND AND COMPREHEND THE FULL CONTENTS OF EACH MANUAL(S) PRIOR TO INSTALLATION AND OPERATION. DELIVER THE MANUAL(S) TO ALL OPERATORS. FAILURE TO OPERATE THIS EQUIPMENT AS DIRECTED MAY CAUSE INJURY OR DEATH.

IMPORTANT NOTE:
 BENDPAK LIFTS ARE SUPPLIED WITH CONCRETE FASTENERS MEETING THE CRITERIA AS PRESCRIBED BY ASTM E488 – 96(2003). LIFT BUYERS ARE RESPONSIBLE FOR ANY SPECIAL REGIONAL STRUCTURAL AND/OR SEISMIC ANCHORING REQUIREMENTS SPECIFIED BY ANY OTHER AGENCIES AND/OR CODES SUCH AS THE UNIFORM BUILDING CODE (UBC) AND/OR INTERNATIONAL BUILDING CODE (IBC).



INTERNAL BAR CODE – FOR FACTORY AUDIT ONLY 34086

BPK	STYOT	P20KVR	X18576	HVY DTY/ GVR 832
-----	-------	--------	--------	---------------------

THE MANUFACTURE, USE, SALE OR IMPORT OF THIS PRODUCT MAY BE SUBJECT TO ONE OR MORE UNITED STATES PATENTS, OR PENDING APPLICATIONS, OWNED BY BENDPAK, INC.

ENGINEERED BY BENDPAK INC USA MADE IN CHINA

2. Vendor Information

Approved Vendor	Vendor Part #	Contact #	Preferred Vendor
1)			

PART SPECIFICATION FORM

BENDPAK Number:	5905555
MRP Description:	2-POST SAFETY DECAL
Date:	06/18/2013
ECO :	00605

1. Engineering Specification

Application:

2-POST SAFETY DECAL

Detailed Description:



SIZE: 28.5" L x 4" W (724m x 100mm)

2. Vendor Information

Approved Vendor	Vendor Part #	Contact #	Preferred Vendor
1)			

PART SPECIFICATION FORM

BENDPAK Number:	5905650
MRP Description:	MAX CAP NRTL DANGER 9K
Date:	05/06/2013
ECO :	00593

1. Engineering Specification

Application:

LIFT CAPACITY STICKER FOR CE LIFTS

Detailed Description:



SIZE: 3.25" L x 4.5" W (82mm x 114mm)

P/N 5905650

2. Vendor Information

Approved Vendor	Vendor Part #	Contact #	Preferred Vendor
1)			

PART SPECIFICATION FORM

BENDPAK Number:	5905940
MRP Description:	PRODUCT DATA LABEL
Date:	05/06/2013
ECO :	00593

1. Engineering Specification

Application:

PRODUCT DATA LABEL

Detailed Description:

	SANTA PAULA, CA USA WWW.BENDPAK.COM
LIFT TYPE: SURFACE MOUNT CAP: MED/HVY DTY MFG. BPK SEE DATA PLATE FOR PRODUCT DETAILS POWER: ELECTRIC/HYDRAULIC INSTALLATION - SEE OWNERS GUIDE OR CONTACT FACTORY	
<p>SAFETY INSTRUCTIONS: IF ATTACHMENTS, ACCESSORIES OR CONFIGURATION MODIFYING COMPONENTS THAT ARE LOCATED IN THE LOAD PATH, AFFECT OPERATION OF THE LIFT, AFFECT THE LIFT ELECTRICAL LISTING OR AFFECT INTENDED VEHICLE ACCOMMODATION ARE USED ON THIS LIFT AND, IF THEY ARE NOT CERTIFIED FOR USE ON THIS LIFT, THEN THE CERTIFICATION OF THIS LIFT SHALL BECOME NULL AND VOID. CONTACT THE PARTICIPANT FOR INFORMATION PERTAINING TO CERTIFIED ATTACHMENTS, ACCESSORIES OR CONFIGURATION MODIFYING COMPONENTS.</p> <p>BENDPAK LIFTS ARE SUPPLIED WITH CONCRETE FASTENERS MEETING THE CRITERIA AS PRESCRIBED BY ASTM E488 - 96(2003). LIFT BUYERS ARE RESPONSIBLE FOR ANY SPECIAL REGIONAL STRUCTURAL AND/OR SEISMIC ANCHORING REQUIREMENTS SPECIFIED BY ANY OTHER AGENCIES AND/OR CODES SUCH AS THE UNIFORM BUILDING CODE (UBC) AND/OR INTERNATIONAL BUILDING CODE (IBC).</p> <p>THE MANUFACTURE, USE, SALE OR IMPORT OF THIS PRODUCT MAY BE SUBJECT TO ONE OR MORE UNITED STATES PATENTS, OR PENDING APPLICATIONS, OWNED BY BENDPAK, INC. DO NOT REMOVE ENGINEERED BY BENDPAK INC. USA MADE IN CHINA</p>	

SIZE: 2.3" L x 4.5" W (58mm x 114mm)

2. Vendor Information

Approved Vendor	Vendor Part #	Contact #	Preferred Vendor
1)			

PART SPECIFICATION FORM

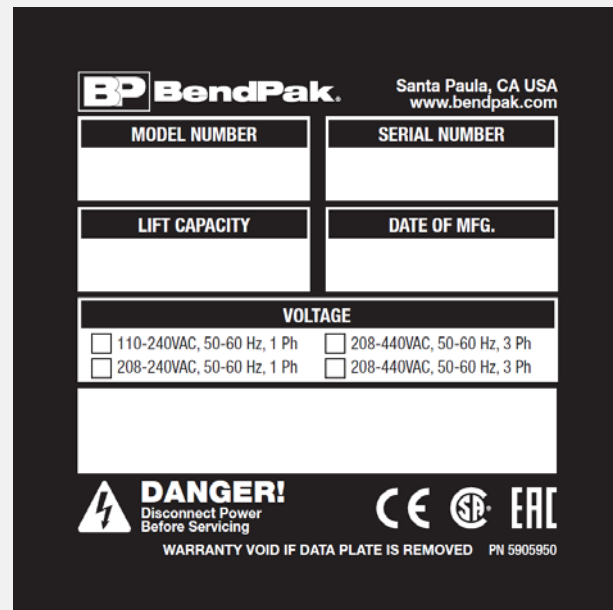
BENDPAK Number:	5905950
MRP Description:	2015_SERIAL_TAG-A-5905950
Date:	11/06/2015
ECO :	00738

1. Engineering Specification

Application:

DATA SERIAL TAG 2 POST CE

Detailed Description:



SIZE: 3.48" L x 3.50" W
(88.4mm x 88.9mm)

2. Vendor Information (Or for Reference)

Approved Vendor	Vendor Part #	Contact #	Preferred Vendor
1)			
2)			
OR BENDPAK ENGINEERING APPROVED EQUIVALENT			