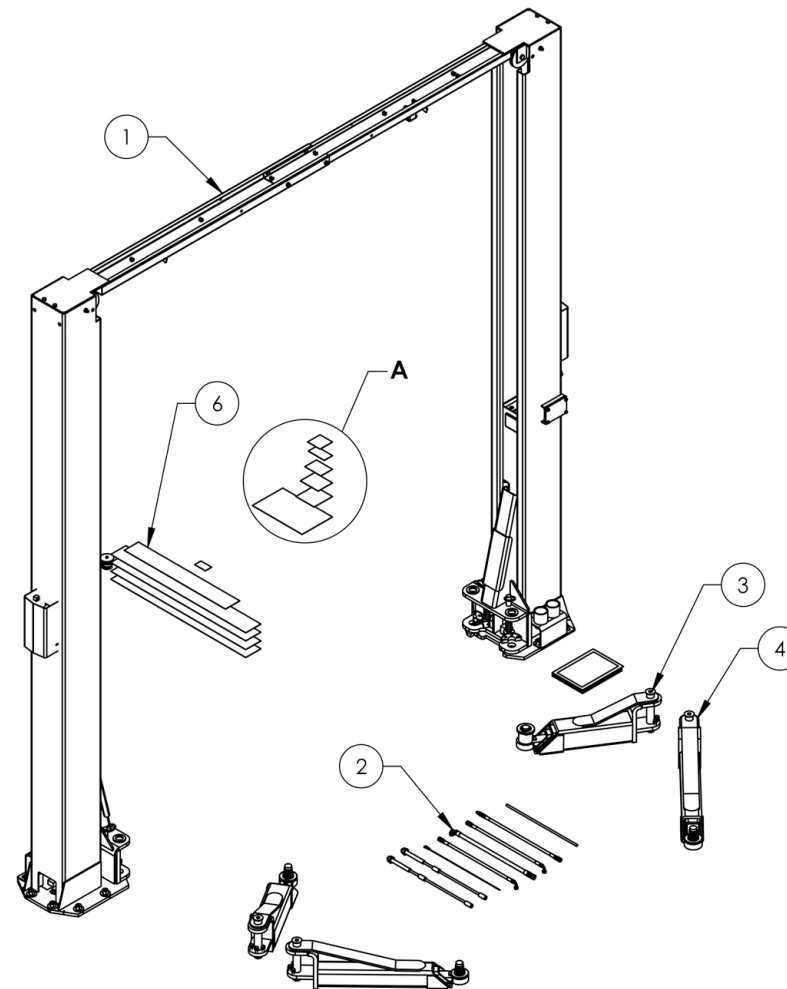


Service Manual

Service Parts & Diagrams

XPR-10S

BendPak SKU 5260575
XPR-10S Two-Post Car Lift
Version E
09/16/2016



This guide is a troubleshooting reference used for maintaining and servicing your BendPak product. It provides comprehensive information on identifying serviceable parts and components and assists in troubleshooting problems and performing assembly/disassembly procedures.



BendPak, Inc. Corporate Office

1645 Lemonwood Drive
Santa Paula, CA 93060 USA
Toll Free US/Canada: 1-800-253-2363
Fax: 1-805-933-9160
info@bendpak.com

Customer Service Desk / Warranty

Customer Service Representatives
Office Tel: 1-805-933-9970
Toll Free US/Canada: 1-800-253-2363
Fax: 1-805-933-9160
customerservice@bendpak.com

Parts Orders

Customer Service Representatives
Office Tel: 1-805-933-9970
Toll Free US/Canada: 1-800-253-2363
Fax: 1-805-933-9160
parts@bendpak.com

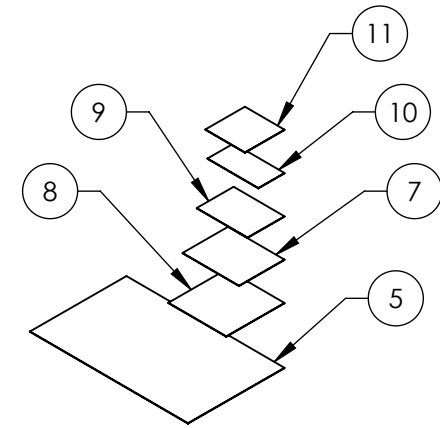
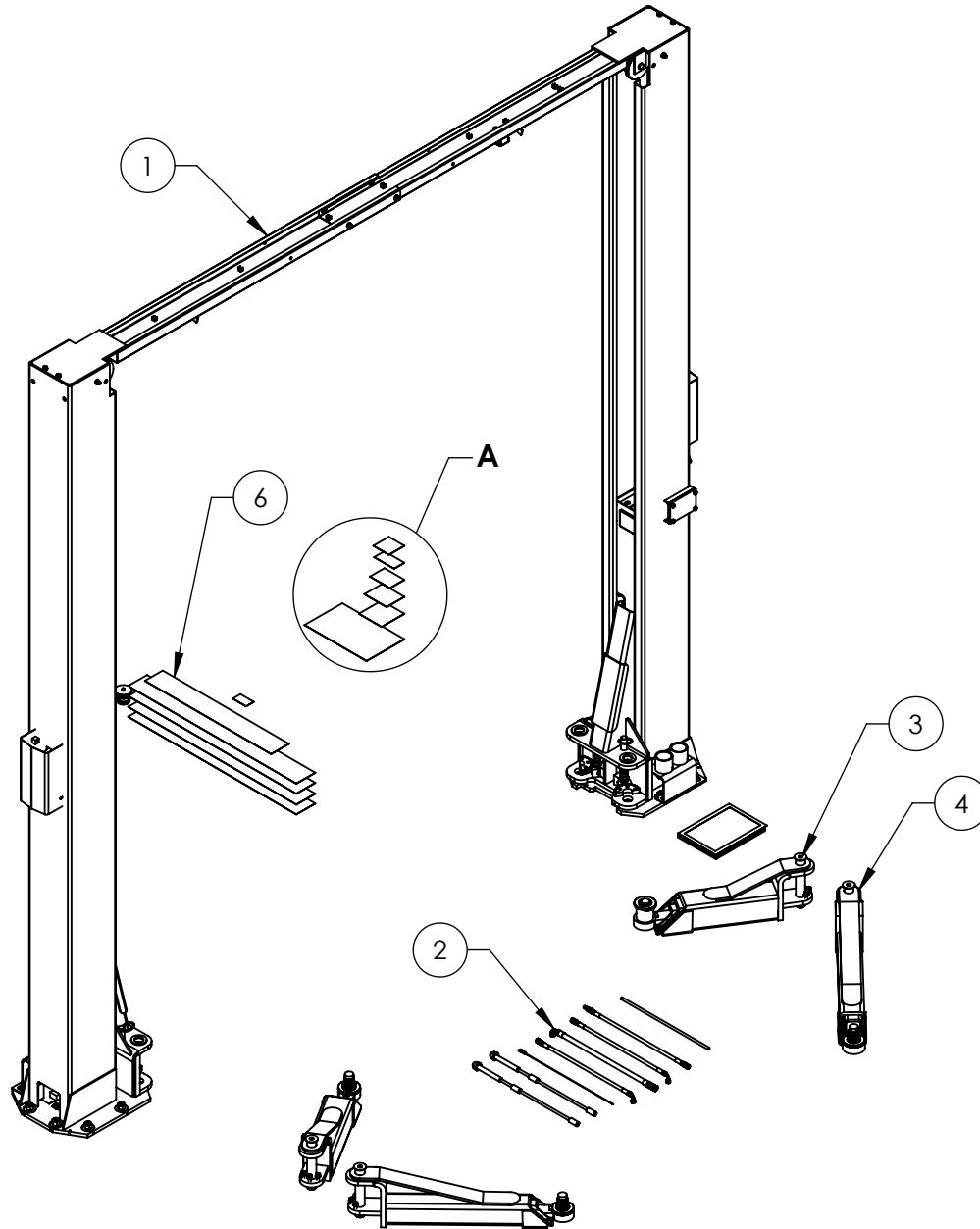
Domestic Sales & Service

USA Sales Representatives
Office Tel: 1-805-933-9970
Toll Free US/Canada: 1-800-253-2363
Fax: 1-805-933-9160
sales@bendpak.com

International Sales & Service

Office Tel: 1-805-933-9970
Exports Department: 1-805-933-9970 Ext. 192
Toll Free US/Canada: 1-800-253-2363
Fax: 1-805-933-9160
bpkexports@bendpak.com

REVISION				
REV	DESCRIPTION	DATE	EDITED BY	ECO#
B	UPDATED BOM REVISIONS	03/22/2016	TM	00750
C	UPDATED BOM REVISION	08/08/2016	TM	00771
D	UPDATED BOM REVISION	08/26/2016	TM	00777



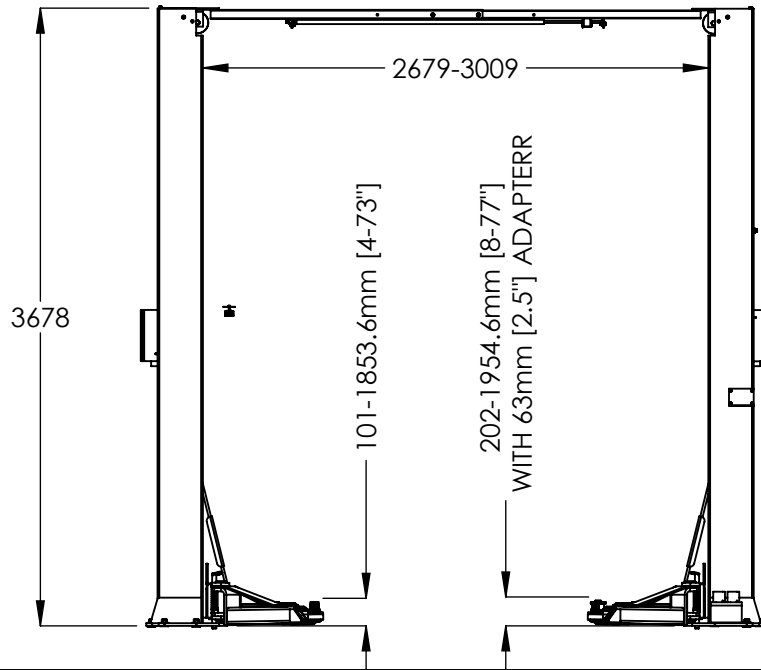
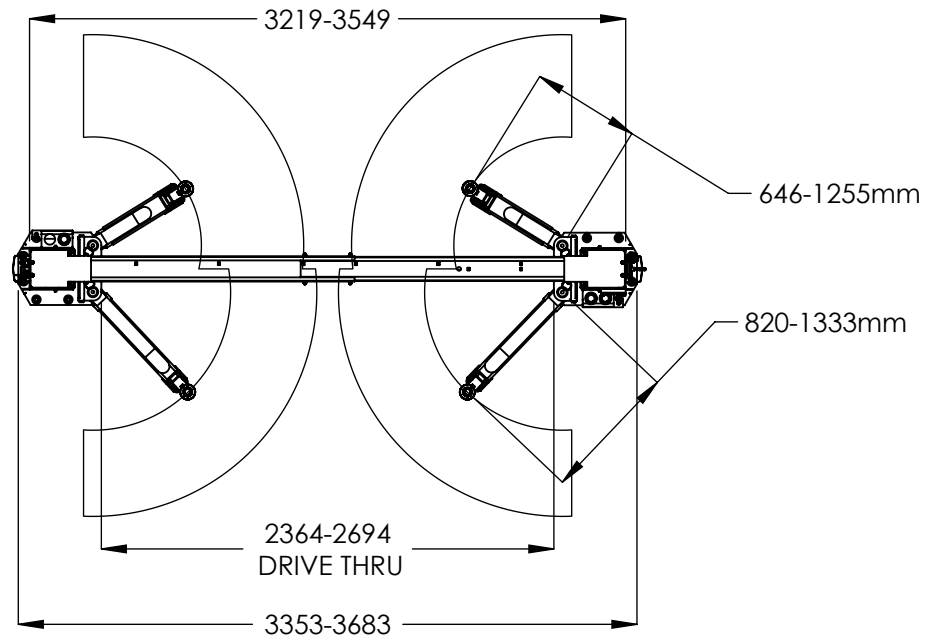
DETAIL A
SCALE 1 : 12


ITEM NO	PART NUMBER	DESCRIPTION	QTY	REV
1	5245227	XPR-10 LIFT SUPERSTRUCTURE	1	R
2	5250048	XPR-10S PARTS BOX	1	D
3	5215287	XPR-9S/9DS/10S LOW PROFILE TRIPLE TELESCOPING ARM ASSEMBLY	2	D
4	5215700	XPR-9S/9DS/10S LOW PROFILE MEDIUM ARM ASSEMBLY	2	D
5	5905109	WARNING ALI/WL 101	1	--
6	5905131	2 POST DECAL KIT, LESS ALI	1	C
7	5905403	MAX CAP DANGER 10K	1	--
8	5905465	MANUFACTURER LABEL	1	--
9	5905655	MAX CAP NRTL DANGER 10K	1	--
10	5905940	PRODUCT DATA LABEL	1	--
11	5905950	2015 SERIAL TAG-A-5905950	1	--

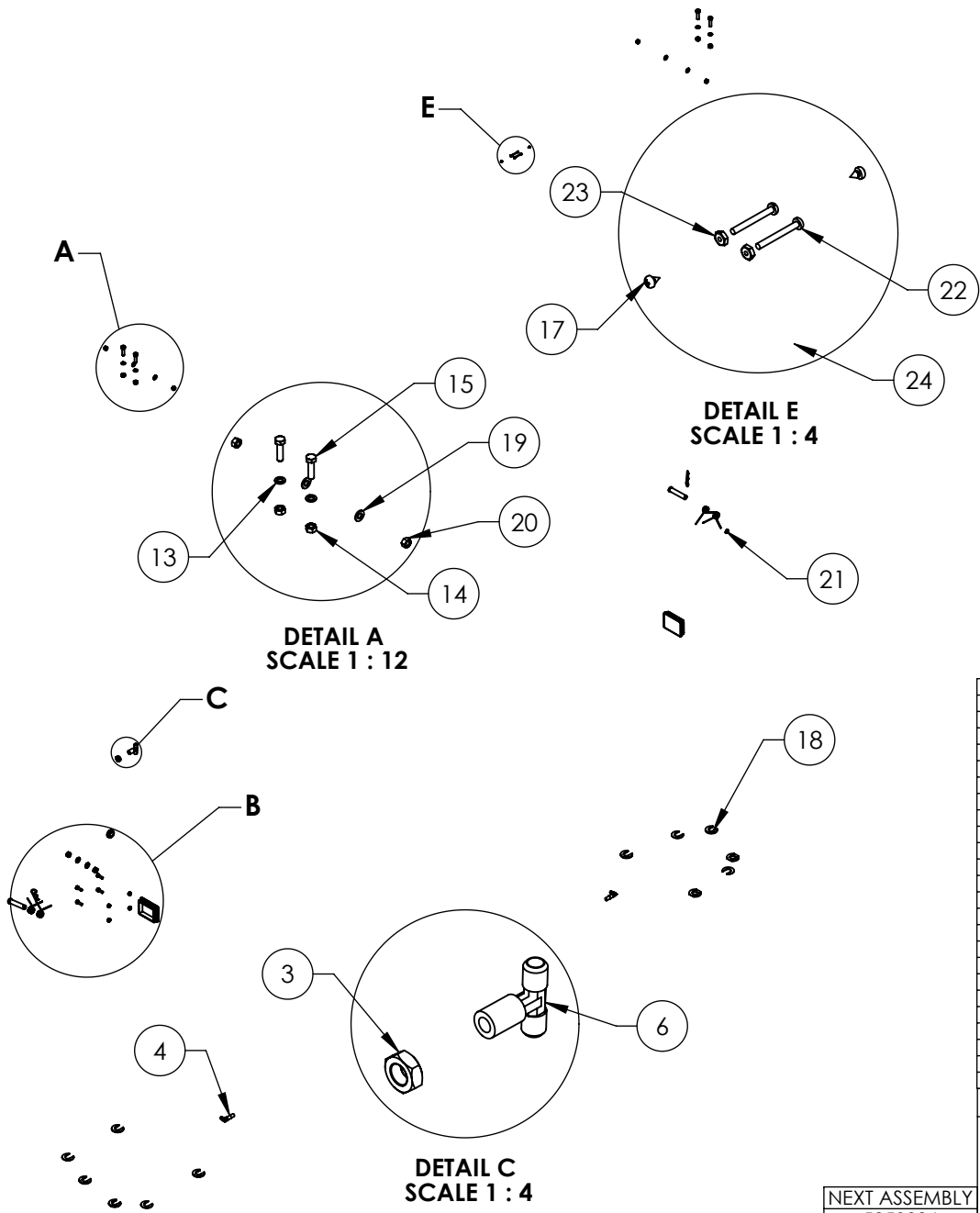
DO NOT SCALE DRAWING	NAME	DATE	1645 LEMONWOOD DR. SANTA PAULA, CA 93060
DIMENSIONS ARE IN MM	DRAWN	TM 12/15/2015	
	CHECKED	DB 09/06/2016	
	THIRD ANGLE PROJECTION		TITLE: XPR-10S PRODUCTION LIFT VER E
			SIZE DWG. NO.
	<small>PROPRIETARY AND CONFIDENTIAL THE INFORMATION CONTAINED IN THIS DRAWING IS THE SOLE PROPERTY OF BENDPAK INC. ANY REPRODUCTION IN PART OR AS A WHOLE WITHOUT THE WRITTEN PERMISSION OF BENDPAK INC. IS PROHIBITED.</small>		REV
SCALE: 1:30		SHEET 1 OF 2	

NOTE: UNLESS OTHERWISE SPECIFIED.

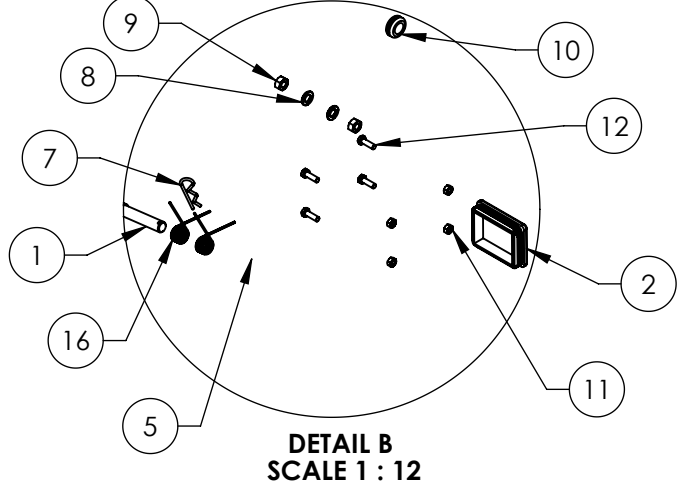
- SEE SHIPPING INSTRUCTIONS FOR FINAL PACKAGING
- ALL LABELS TO BE APPLIED TO POSTS AFTER PAINTING. SEE ATTACHED LABEL PLACEMENT SHEET.



 BendPak <small>HOISTING • MATERIAL HANDLING • SERVICE SOLUTIONS</small>		1645 LEMONWOOD DR. SANTA PAULA, CA 93060	
TITLE: XPR-10S PRODUCTION LIFT VER E			
SIZE	DWG. NO.	REV	
A	5260575	D	
SCALE: 1:45			SHEET 2 OF 2



REVISION				
REV	DESCRIPTION	DATE	EDITED BY	ECO#
G	ADDED (2) 5540075, REPLACED 5530314 WITH 5530261, REPLACED 5540001 WITH 5540075, UPDATED TITLE TO REFLECT WHERE USED, UPDATED BOM REVISION AND NEXT ASSEMBLIES	06/17/2013	TM	00605
H	UPDATED BOM REVISION	06/02/2014	TM	00649
J	REPLACED 5505113 WITH 5505001, UPDATED NEXT ASSEMBLY	10/06/2014	TM	00663
J-001	UPDATED NEXT ASSEMBLY	11/18/2015	JM	00732
J-002	UPDATED NEXT ASSEMBLIES	12/15/2015	TM	00738



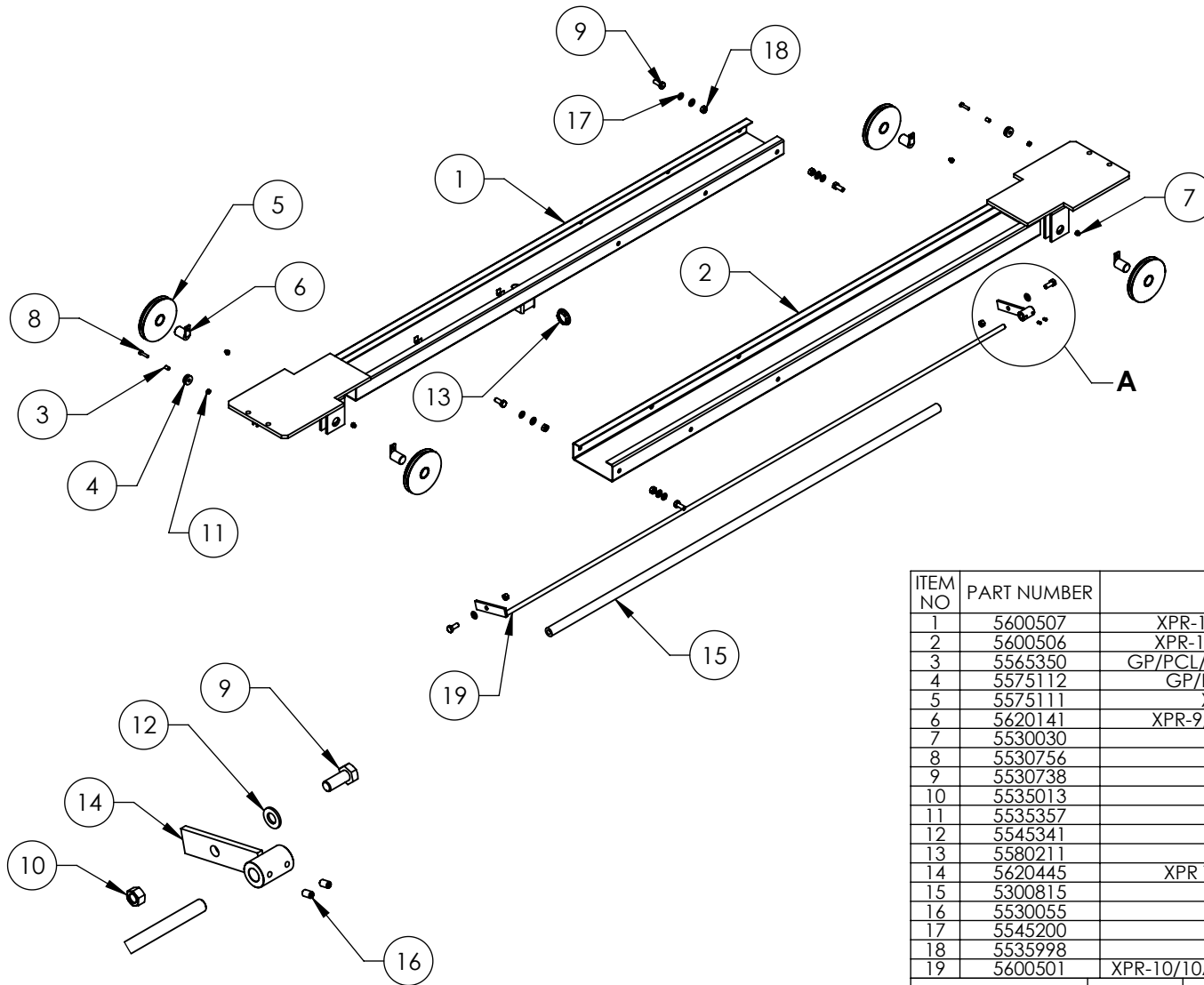
ITEM NO	PART NUMBER	DESCRIPTION	QTY	REV
1	5505001	GP-7/PI-6000/XPR SERIES SAFETY CLEVIS PIN	2	A
2	5715196	XPR PLASTIC COVER BLOCK 105 x 80	2	C
3	5535022	NUT 9/16"-18 JN	1	-
4	5550113	FIG ELB -04 NPT L x -04 JIC	2	-
5	5550183	FIG ELB -06 JIC -06L ORB	1	-
6	5550003	FIG TEE -04 JIC -04 JIC -06 JIC	1	-
7	5505350	MODEL #211 HAIR PIN/LARGE	2	-
8	5545347	WASHER M12 FLAT WASHER	2	-
9	5535354	NUT M12 x L 75	2	-
10	5520001	RUBBER GROMMET, 3/4 I.D.	1	-
11	5535001	NUT M8 x 1.25 NL	4	-
12	5530010	HHB M8 x 1.25 x 25	4	-
13	5545200	WASHER M10 x Ø18 SL	4	-
14	5535298	NUT M10 x 1.5	4	-
15	5530760	HEX HEAD BOLT M10x1.25x35	4	-
16	5540075	2.5 WIRE DIA. Ø20.5 x 75 LG	4	A
17	5530750	SIS M4.2 x 1.7 x 6	2	-
18	5545535	C WASHER SHIM FOR LIFTS	20	-
19	5545341	WASHER M10 x Ø20 FLAT	4	-
20	5535013	NUT M10 x 1.5 NL	4	-
21	5505031	ROTOR CLIP 12mm SS	1	-
22	5530115	BHS 6-32 x 1.25	2	-
23	5535190	HN 6-32	2	-
24	5520140	ROMEX CONNECTOR 3/8 #6623	2	-

NEXT ASSEMBLY
5250036
5250039
5250041
5250043
5250044
5250048

NOTE: UNLESS OTHERWISE SPECIFIED.
 1. SEE SHIPPING INSTRUCTIONS FOR FINAL PACKAGING



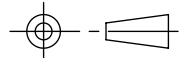
DO NOT SCALE DRAWING	NAME	DATE	1645 LEMONWOOD DR. SANTA PAULA, CA 93060
DIMENSIONS ARE IN MM 	DRAWN	TM 02/11/2010	
	CHECKED	CA 02/19/2016	
THIRD ANGLE PROJECTION			TITLE: XPR CLEARFLOOR PARTS BAG
			SCALE: 1:30
PROPRIETARY AND CONFIDENTIAL THE INFORMATION CONTAINED IN THIS DRAWING IS THE SOLE PROPERTY OF BENDPAK INC. ANY REPRODUCTION IN PART OR AS A WHOLE WITHOUT THE WRITTEN PERMISSION OF BENDPAK INC. IS PROHIBITED.			SIZE DWG. NO. A 5174518 REV J
			SHEET 1 OF 1

REV	DESCRIPTION	DATE	EDITED BY	ECO#
F	UPDATED BOM REVISIONS	10/08/2014	TM	00663
G	REPLACED 5545251 WITH 5545200	05/26/2015	TM	00689
H	UPDATED BOM REVISIONS AND NEXT ASSEMBLY	11/23/2015	TM	00738



**DETAIL A
SCALE 1 : 6**

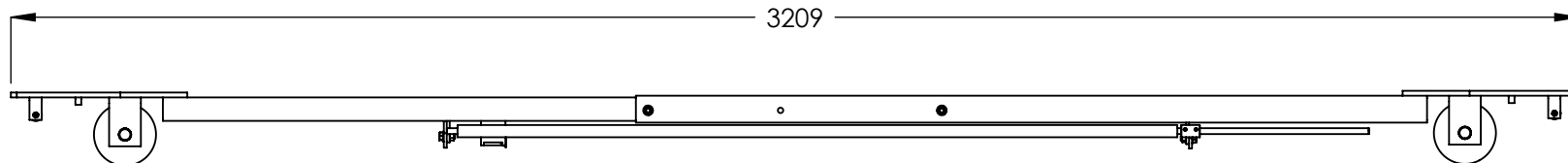
ITEM NO	PART NUMBER	DESCRIPTION	QTY	REV
1	5600507	XPR-10 INNER TOP TROUGH WELDMENT	1	E
2	5600506	XPR-10 OUTER TOP TROUGH WELDMENT	1	E
3	5565350	GP/PCL/XPR/PL-7000 SAFETY SHEAVE SPACER	2	C
4	5575112	GP/PCL/XPR/PL-7000 SAFETY SHEAVE	2	C
5	5575111	XPR-9S/10 SHEAVE ASSEMBLY	4	F
6	5620141	XPR-9/10 CABLE SHEAVE PIN WELDMENT	4	F
7	5530030	HHB M6 x 1 x 8	4	-
8	5530756	HHB M6 x 1 x 25	2	-
9	5530738	HHB M10 x 1.5 x 25	6	-
10	5535013	NUT M10 x 1.5 NL	2	-
11	5535357	NUT M6 x 1.0 NL	2	-
12	5545341	WASHER M10 x Ø20 FLAT	6	-
13	5580211	STEEL HOLE PLUG 1 1/4"	1	-
14	5620445	XPR TRIP STOP BAR SLIDER WELDMENT	1	C
15	5300815	XPR STOP BAR CUSHION	1	C
16	5530055	SSS M6x1x10	2	-
17	5545200	WASHER M10 x Ø18 SL	4	-
18	5535998	NUT M10 x 1.5	4	-
19	5600501	XPR-10/10A MICROSWITCH STOP BAR WELDMENT	1	B

DO NOT SCALE DRAWING	NAME	DATE	 1645 LEMONWOOD DR. SANTA PAULA, CA 93060
	DRAWN	TM 08/03/2010	
	CHECKED	CA 02/17/2016	
DIMENSIONS ARE IN MM 	THIRD ANGLE PROJECTION		TITLE: XPR-10 TOP TROUGH ASSEMBLY
			SIZE DWG. NO. A 5210202
PROPRIETARY AND CONFIDENTIAL THE INFORMATION CONTAINED IN THIS DRAWING IS THE SOLE PROPERTY OF BENDPAK INC. ANY REPRODUCTION IN PART OR AS A WHOLE WITHOUT THE WRITTEN PERMISSION OF BENDPAK INC. IS PROHIBITED.			REV H
NEXT ASSEMBLY 5245227			SCALE: 1:18 SHEET 1 OF 2

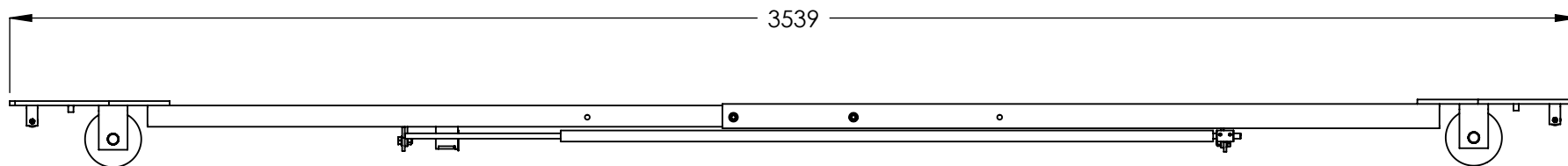
NOTE: UNLESS OTHERWISE SPECIFIED.

- SEE SHIPPING INSTRUCTIONS FOR FINAL PACKAGING
- ASSEMBLE ITEMS AS SHOWN


NEXT ASSEMBLY
5245227



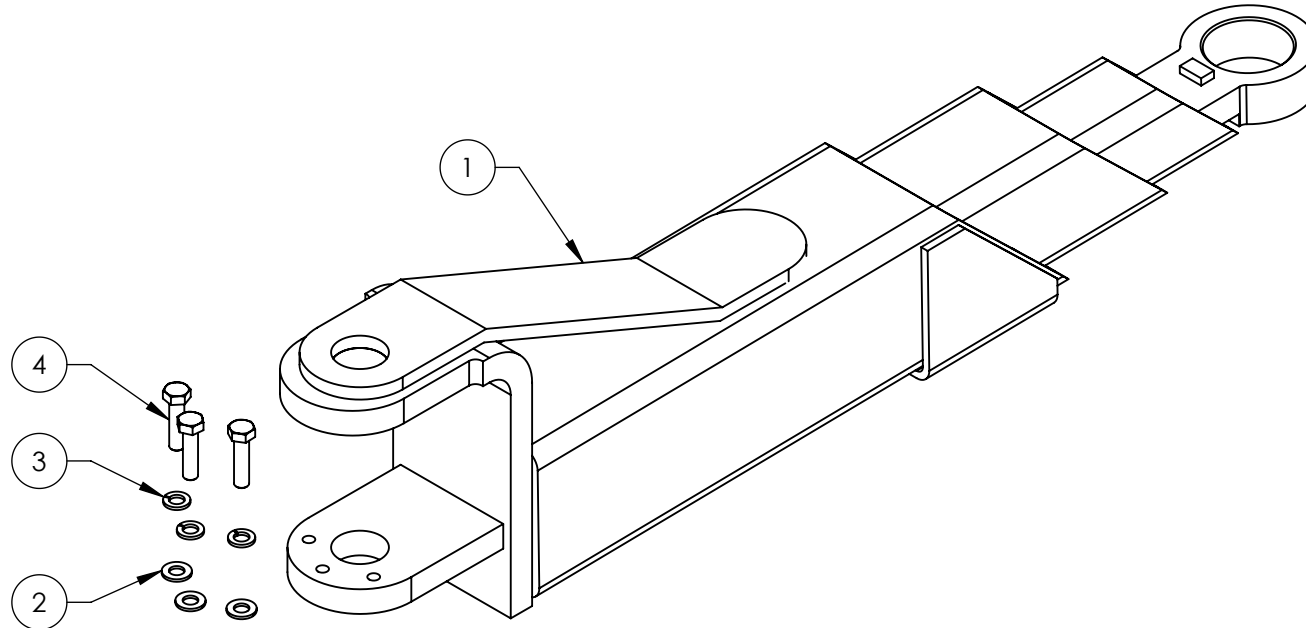
COLLAPSED



EXTENDED

 BendPak. 1645 LEMONWOOD DR. <small>PROVIDING WORKSPACE SOLUTIONS</small> SANTA PAULA, CA 93060		
TITLE: XPR-10 TOP TROUGH ASSEMBLY		
SIZE A	DWG. NO. 5210202	REV H
SCALE: 1:15		SHEET 2 OF 2

REVISION				
REV	DESCRIPTION	DATE	EDITED BY	ECO#
B	REMOVED 5505050, UPDATED BOM REVISION	09/22/2015	TM	00729
C	UPDATED TITLE TO REFLECT WHERE USED, UPDATED NEXT ASSEMBLIES	12/17/2015	JM	00738
D	UPDATED BOM REVISION	03/22/2016	TM	00750



ITEM NO	PART NUMBER	DESCRIPTION	QTY	REV
1	5600997	XPR-9/9D/10 LOW PROFILE TRIPLE TELESCOPING ARM WELDMENT	1	C
2	5545341	WASHER M10 x Ø20 FLAT	3	-
3	5545200	WASHER M10 x Ø18 SL	3	-
4	5530302	HHB M10 x 1.5 x 40	3	-

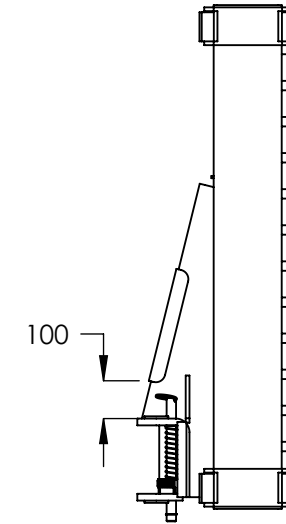
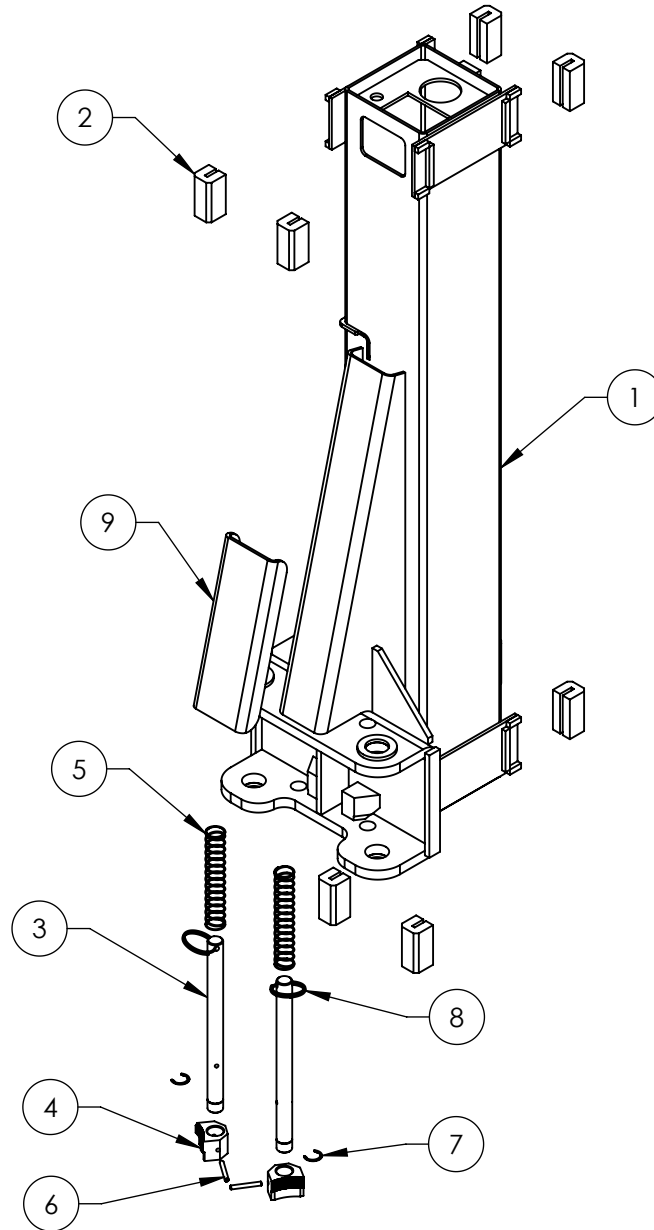
DO NOT SCALE DRAWING		NAME	DATE	1645 LEMONWOOD DR. SANTA PAULA, CA 93060
DIMENSIONS ARE IN MM		DRAWN	06/23/2015	
		CHECKED	04/26/2016	TITLE: XPR-9S/9DS/10S LOW PROFILE TRIPLE TELESCOPING ARM ASSEMBLY SIZE DWG. NO. A 5215287 REV D
		THIRD ANGLE PROJECTION		
NEXT ASSEMBLY		PROPRIETARY AND CONFIDENTIAL THE INFORMATION CONTAINED IN THIS DRAWING IS THE SOLE PROPERTY OF BENDPAK INC. ANY REPRODUCTION IN PART OR AS A WHOLE WITHOUT THE WRITTEN PERMISSION OF BENDPAK INC. IS PROHIBITED.		SHEET 1 OF 1

NEXT ASSEMBLY
5260553
5260554
5260555
5260558
5260572
5260574
5260575

NOTE: UNLESS OTHERWISE SPECIFIED.

- SEE SHIPPING INSTRUCTIONS FOR FINAL PACKAGING
- ASSEMBLE ITEMS AS SHOWN

		REVISION		
REV	DESCRIPTION	DATE	EDITED BY	ECO#
J	UPDATED BOM REVISION	11/19/2014	TM	00673
K	UPDATED BOM REVISION	05/14/2015	TM	00689
L	UPDATED BOM REVISIONS	11/03/2015	HG	00738



ITEM NO	PART NUMBER	DESCRIPTION	QTY	REV
1	5600503	XPR-10/10A LIFT HEAD WELDMENT	1	K
2	5716001	PL-6000/7000, GP/XPR SERIES GUIDE BLOCK	8	E
3	5746098	GP/RTL, XPR-9/10 Ø25mm GEAR SHAFT	2	E
4	5701052	GP/RTL/XPR ARM INTERNAL GEAR STOP	2	E
5	5540133	GP-7, RTL-8000, XPR-9/10 LIFT HEAD SPRING	2	C
6	5505106	SPRING PIN M6 x 50	2	-
7	5540006	SNAP RING TRUARC 5103-100	2	-
8	5580219	KEYRING 56mm x 3mm	2	-
9	5930183	XPR-9/10 LIFT HEAD GUSSET COVER	1	E

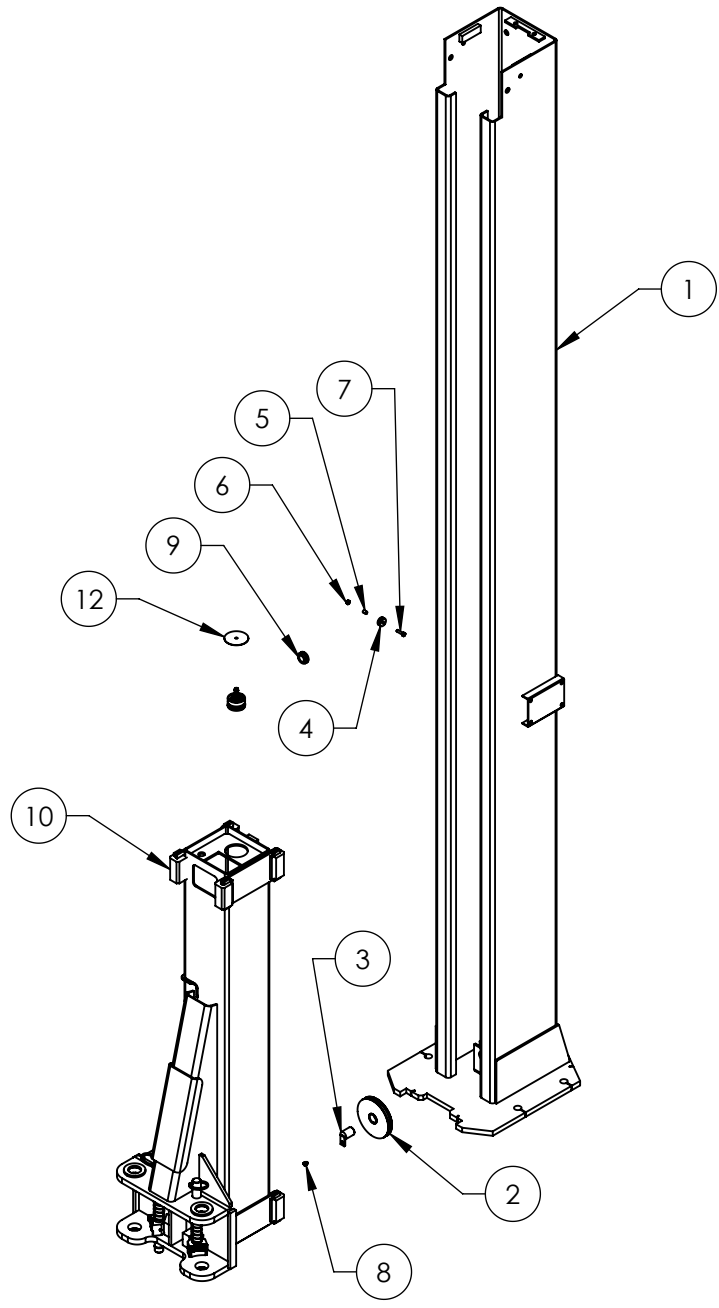
DO NOT SCALE DRAWING		NAME	DATE	1645 LEMONWOOD DR. SANTA PAULA, CA 93060
		DRAWN	TM 08/30/2010	
		CHECKED	CA 02/18/2016	
DIMENSIONS ARE IN MM		THIRD ANGLE PROJECTION		TITLE: XPR-10/10A LIFT HEAD ASSEMBLY
				SIZE DWG. NO.
				A 5215387
NEXT ASSEMBLY		PROPRIETARY AND CONFIDENTIAL		REV
5215388		THE INFORMATION CONTAINED IN THIS DRAWING IS THE SOLE PROPERTY OF BENDPAK INC. ANY REPRODUCTION IN PART OR AS A WHOLE WITHOUT THE WRITTEN PERMISSION OF BENDPAK INC. IS PROHIBITED.		L
5215389		SCALE: 1:12		SHEET 1 OF 1

NOTE: UNLESS OTHERWISE SPECIFIED.

- SEE SHIPPING INSTRUCTIONS FOR FINAL PACKAGING
- ASSEMBLE ITEMS AS SHOWN

NEXT ASSEMBLY
5215388
5215389

REV	DESCRIPTION	REVISION	DATE	EDITED BY	ECO#
M	UPDATED BOM REVISIONS		11/19/2014	TM	00673
N	UPDATED BOM REVISION		05/14/2015	TM	00689
P	UPDATED TITLE TO REFLECT MARKETING, UPDATED BOM REVISIONS		11/24/2015	TM	00738



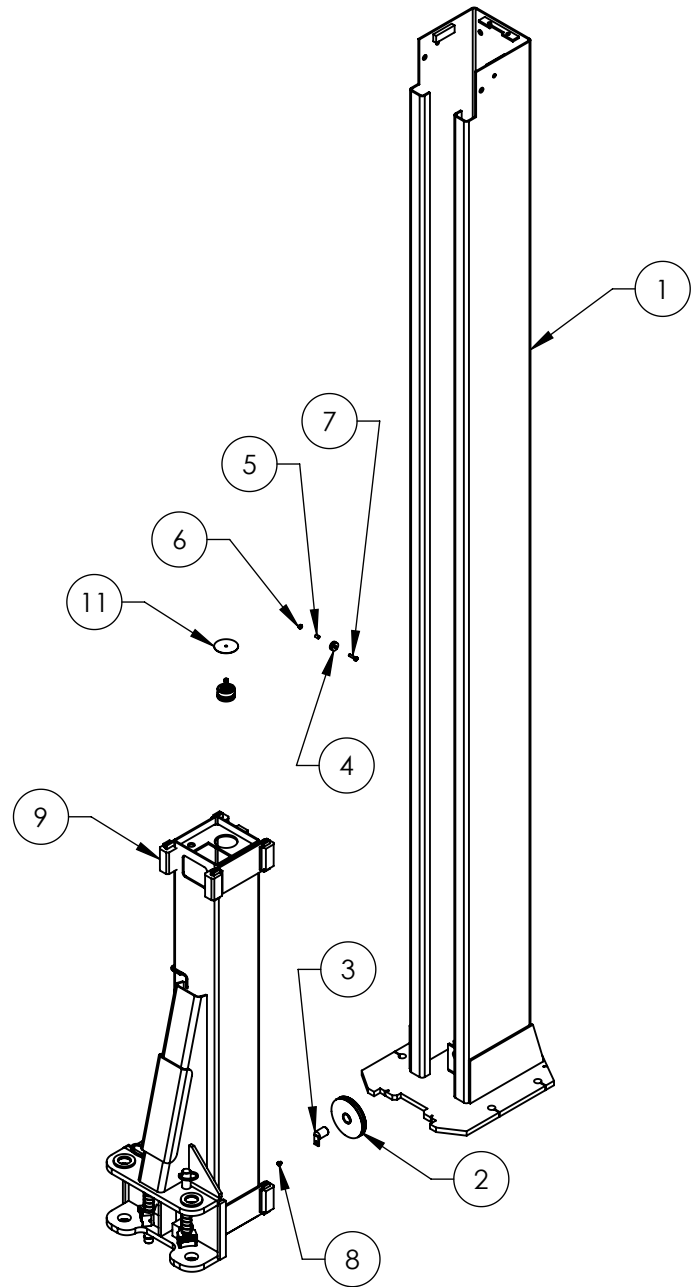
ITEM NO	PART NUMBER	DESCRIPTION	QTY	REV
1	5600386	XPR-10 POWER SIDE POST WELDMENT	1	H
2	5575111	XPR-9S/10 SHEAVE ASSEMBLY	1	F
3	5620141	XPR-9/10 CABLE SHEAVE PIN WELDMENT	1	F
4	5575112	GP/PCL/XPR/PL-7000 SAFETY SHEAVE	1	C
5	5565350	GP/PCL/XPR/PL-7000 SAFETY SHEAVE SPACER	1	C
6	5535357	NUT M6 x 1.0 NL	1	-
7	5530756	HHB M6 x 1 x 25	1	-
8	5530030	HHB M6 x 1 x 8	1	-
9	5520001	RUBBER GROMMET, 3/4 I.D.	1	A
10	5215387	XPR-10/10A LIFT HEAD ASSEMBLY	1	L
11	5502300	CYLINDER ASSEMBLY Ø2.0 x 69	1	F
12	5701716	XPR LIGHT DUTY CYLINDER STOPPER	1	A

NOTE: UNLESS OTHERWISE SPECIFIED.
 1. SEE SHIPPING INSTRUCTIONS FOR FINAL PACKAGING
 2. ASSEMBLE ITEMS AS SHOWN

NEXT ASSEMBLY
5245044
5245227

DO NOT SCALE DRAWING	NAME	DATE	1645 LEMONWOOD DR. SANTA PAULA, CA 93060
DIMENSIONS ARE IN MM	DRAWN	TM 08/30/2010	
	CHECKED	CA 02/18/2016	TITLE: XPR-10/10A POWER SIDE POST ASSEMBLY
	THIRD ANGLE PROJECTION		SIZE DWG. NO.
			REV
<small>PROPRIETARY AND CONFIDENTIAL THE INFORMATION CONTAINED IN THIS DRAWING IS THE SOLE PROPERTY OF BENDPAK INC. ANY REPRODUCTION IN PART OR AS A WHOLE WITHOUT THE WRITTEN PERMISSION OF BENDPAK INC. IS PROHIBITED.</small>		A 5215388	P
SCALE: 1:22		SHEET 1 OF 1	

REV	DESCRIPTION	REVISION	DATE	EDITED BY	ECO#
M	UPDATED BOM REVISIONS		11/19/2014	TM	00673
N	UPDATED BOM REVISION		05/14/2015	TM	00689
P	UPDATED TITLE TO REFLECT MARKETING, UPDATED BOM REVISIONS		11/12/2015	TM	00738



ITEM NO	PART NUMBER	DESCRIPTION	QTY	REV
1	5600387	XPR-10 OFF SIDE POST WELDMENT	1	F
2	5575111	XPR-9S/10 SHEAVE ASSEMBLY	1	F
3	5620141	XPR-9/10 CABLE SHEAVE PIN WELDMENT	1	F
4	5575112	GP/PCL/XPR/PL-7000 SAFETY SHEAVE	1	C
5	5565350	GP/PCL/XPR/PL-7000 SAFETY SHEAVE SPACER	1	C
6	5535357	NUT M6 x 1.0 NL	1	-
7	5530756	HHB M6 x 1 x 25	1	-
8	5530030	HHB M6 x 1 x 8	1	-
9	5215387	XPR-10/10A LIFT HEAD ASSEMBLY	1	L
10	5502300	CYLINDER ASSEMBLY Ø2.0 x 69	1	F
11	5701716	XPR LIGHT DUTY CYLINDER STOPPER	1	A

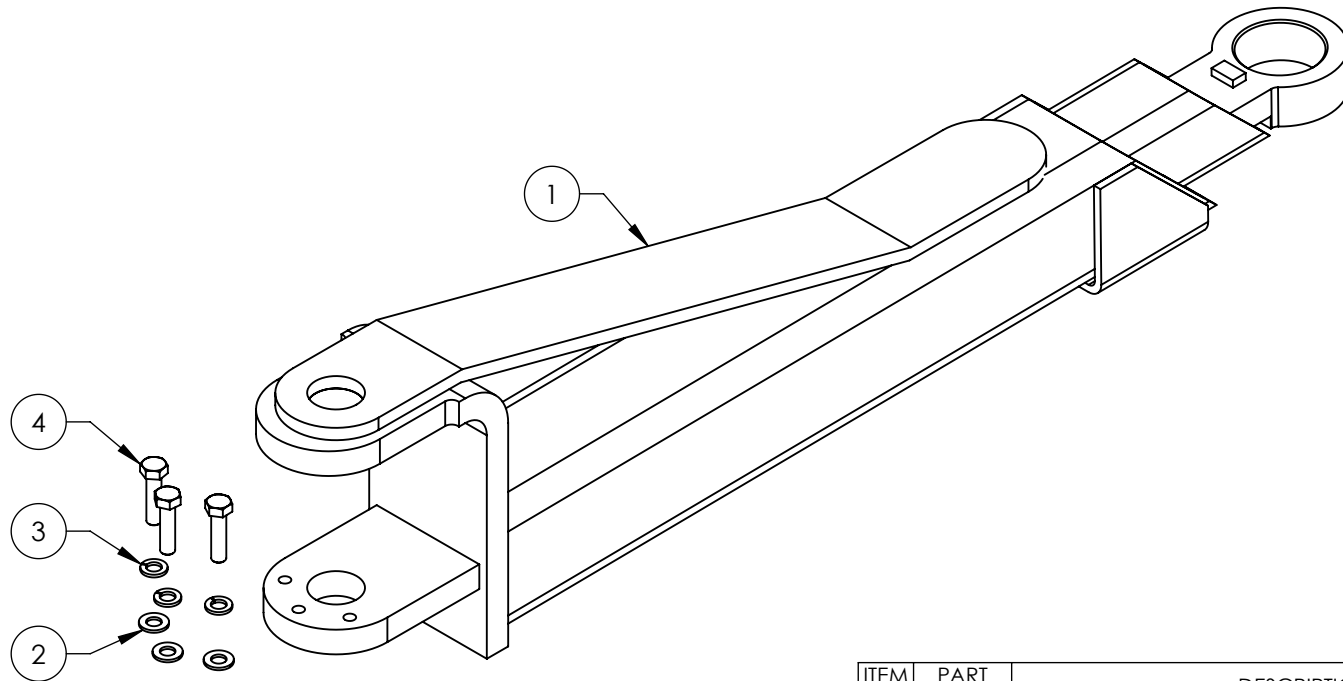
DO NOT SCALE DRAWING	NAME	DATE	1645 LEMONWOOD DR. SANTA PAULA, CA 93060
DIMENSIONS ARE IN MM 	DRAWN	TM 08/30/2010	
	CHECKED	CA 02/18/2016	
THIRD ANGLE PROJECTION		TITLE: XPR-10/10A OFF SIDE POST ASSEMBLY	
		SIZE DWG. NO. A 5215389	REV P
PROPRIETARY AND CONFIDENTIAL THE INFORMATION CONTAINED IN THIS DRAWING IS THE SOLE PROPERTY OF BENDPAK INC. ANY REPRODUCTION IN PART OR AS A WHOLE WITHOUT THE WRITTEN PERMISSION OF BENDPAK INC. IS PROHIBITED.			SCALE: 1:22 SHEET 1 OF 1

NOTE: UNLESS OTHERWISE SPECIFIED.



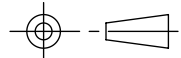
1. SEE SHIPPING INSTRUCTIONS FOR FINAL PACKAGING
2. ASSEMBLE ITEMS AS SHOWN

NEXT ASSEMBLY
5245044
5245227

REVISION				
REV	DESCRIPTION	DATE	EDITED BY	ECO#
B	REMOVED 5505050, UPDATED BOM REVISION	09/22/2015	TM	00729
C	UPDATED TITLE TO REFLECT WHERE USED, UPDATED NEXT ASSEMBLY	12/17/2015	JM	00738
D	UPDATED BOM REVISION	03/22/2016	TM	00750



ITEM NO	PART NUMBER	DESCRIPTION	QTY	REV
1	5600998	XPR-9S/9DS/10S LOW PROFILE MEDIUM ARM WELDMENT	1	C
2	5545341	WASHER M10 x Ø20 FLAT	3	-
3	5545200	WASHER M10 x Ø18 SL	3	-
4	5530302	HHB M10 x 1.5 x 40	3	-

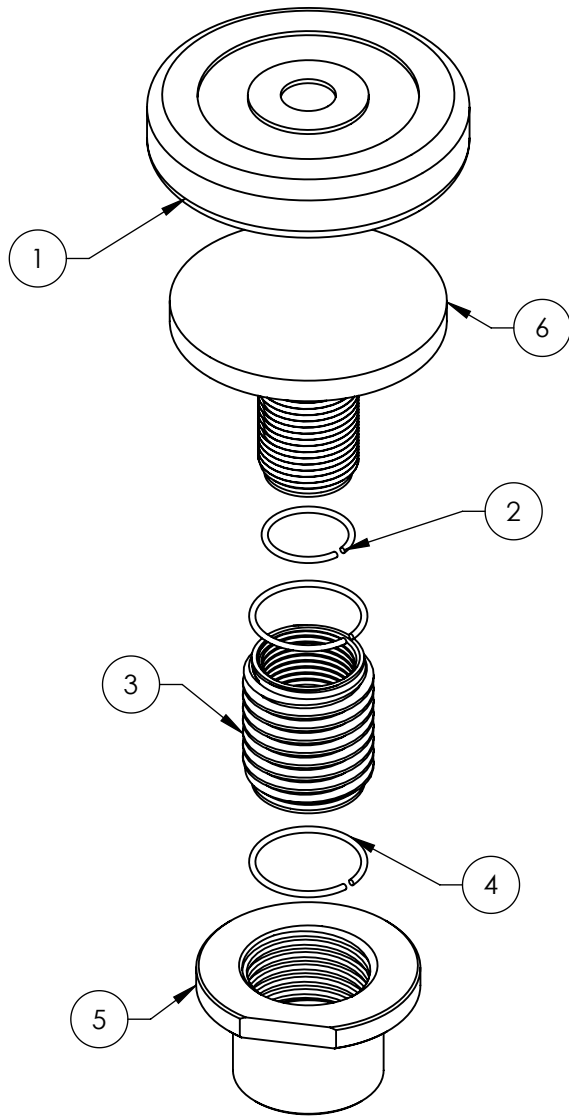
DO NOT SCALE DRAWING		NAME	DATE	 1645 LEMONWOOD DR. SANTA PAULA, CA 93060
DIMENSIONS ARE IN MM 		DRAWN	JM 06/23/2015	
		CHECKED	CA 04/26/2016	
		THIRD ANGLE PROJECTION		TITLE: XPR-9S/9DS/10S LOW PROFILE MEDIUM ARM ASSEMBLY
				SIZE DWG. NO. REV
		<small>PROPRIETARY AND CONFIDENTIAL THE INFORMATION CONTAINED IN THIS DRAWING IS THE SOLE PROPERTY OF BENDPAK INC. ANY REPRODUCTION IN PART OR AS A WHOLE WITHOUT THE WRITTEN PERMISSION OF BENDPAK INC. IS PROHIBITED.</small>		A 5215700 D
		SCALE: 1:5		SHEET 1 OF 1

NEXT ASSEMBLY
5260555
5260558
5260574
5260575

NOTE: UNLESS OTHERWISE SPECIFIED.

- SEE SHIPPING INSTRUCTIONS FOR FINAL PACKAGING
- ASSEMBLE ITEMS AS SHOWN

REVISION				
REV	DESCRIPTION	DATE	EDITED BY	ECO#
C	UPDATED BOM REVISIONS	02/19/2016	TM	00750
D	UPDATED BOM REVISIONS	8/10/2016	TM	00771
E	UPDATED BOM REVISIONS	08/25/2016	TM	00777



ITEM NO.	PART NUMBER	DESCRIPTION	QTY	REV
1	5715017	ROUND LIFT PAD ADAPTER RUBBER PAD	1	D
2	5540025	S RING Ø35mm	1	--
3	5746692	INNER SCREW	1	B
4	5540026	S RING Ø45mm	2	--
5	5746693	ROUND LIFT PAD SCREW ADAPTOR	1	D
6	5601001	ROUND LIFT PAD ADAPTOR WELDMENT	1	C

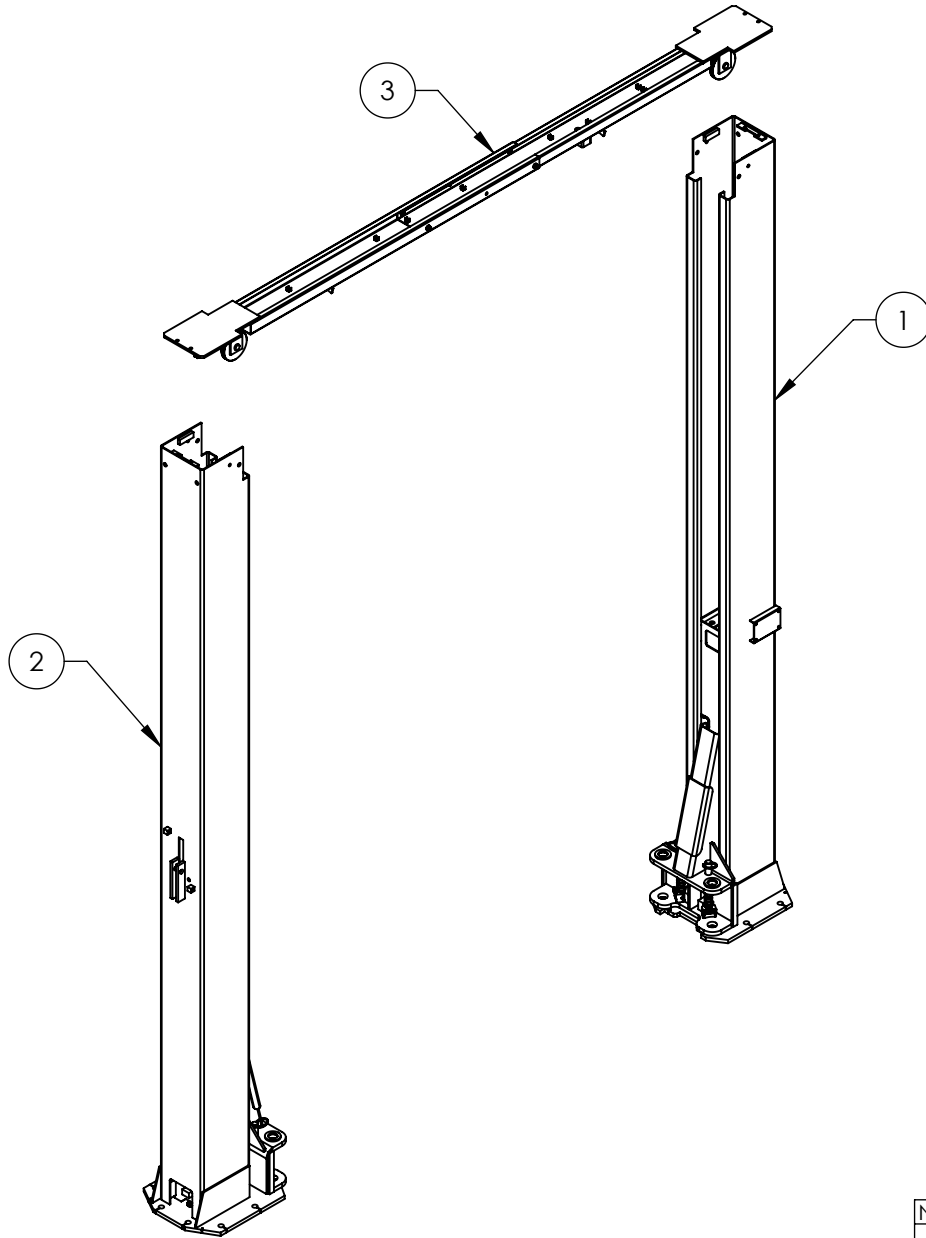
DO NOT SCALE DRAWING		NAME	DATE	1645 LEMONWOOD DR. SANTA PAULA, CA 93060
DRAWN		CHY	06/14/2015	
CHECKED				TITLE: ROUND ADJUSTABLE LIFT PAD ASSEMBLY
THIRD ANGLE PROJECTION				
DIMENSIONS ARE IN MM 		PROPRIETARY AND CONFIDENTIAL THE INFORMATION CONTAINED IN THIS DRAWING IS THE SOLE PROPERTY OF BENDPAK INC. ANY REPRODUCTION IN PART OR AS A WHOLE WITHOUT THE WRITTEN PERMISSION OF BENDPAK INC. IS PROHIBITED.		SIZE DWG. NO. A 5215704
		SCALE: 1:3		REV E
				SHEET 1 OF 1

NEXT ASSEMBLY
5250036
5250037
5250038
5250039
5250040
5250048
5250049



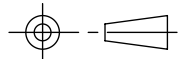
NOTE: UNLESS OTHERWISE SPECIFIED.

1. ASSEMBLE ITEMS AS SHOWN

REVISION				
REV	DESCRIPTION	DATE	EDITED BY	ECO#
P	UPDATED BOM REVISIONS	11/24/2014	TM	00673
Q	UPDATED BOM REVISIONS	05/14/2015	TM	00689
R	UPDATED BOM REVISIONS AND NEXT ASSEMBLIES	12/08/2015	TM	00738



ITEM NO	PART NUMBER	DESCRIPTION	QTY	REV
1	5215388	XPR-10/10A POWER SIDE POST ASSEMBLY	1	P
2	5215389	XPR-10/10A OFF SIDE POST ASSEMBLY	1	P
3	5210202	XPR-10 TOP TROUGH ASSEMBLY	1	H

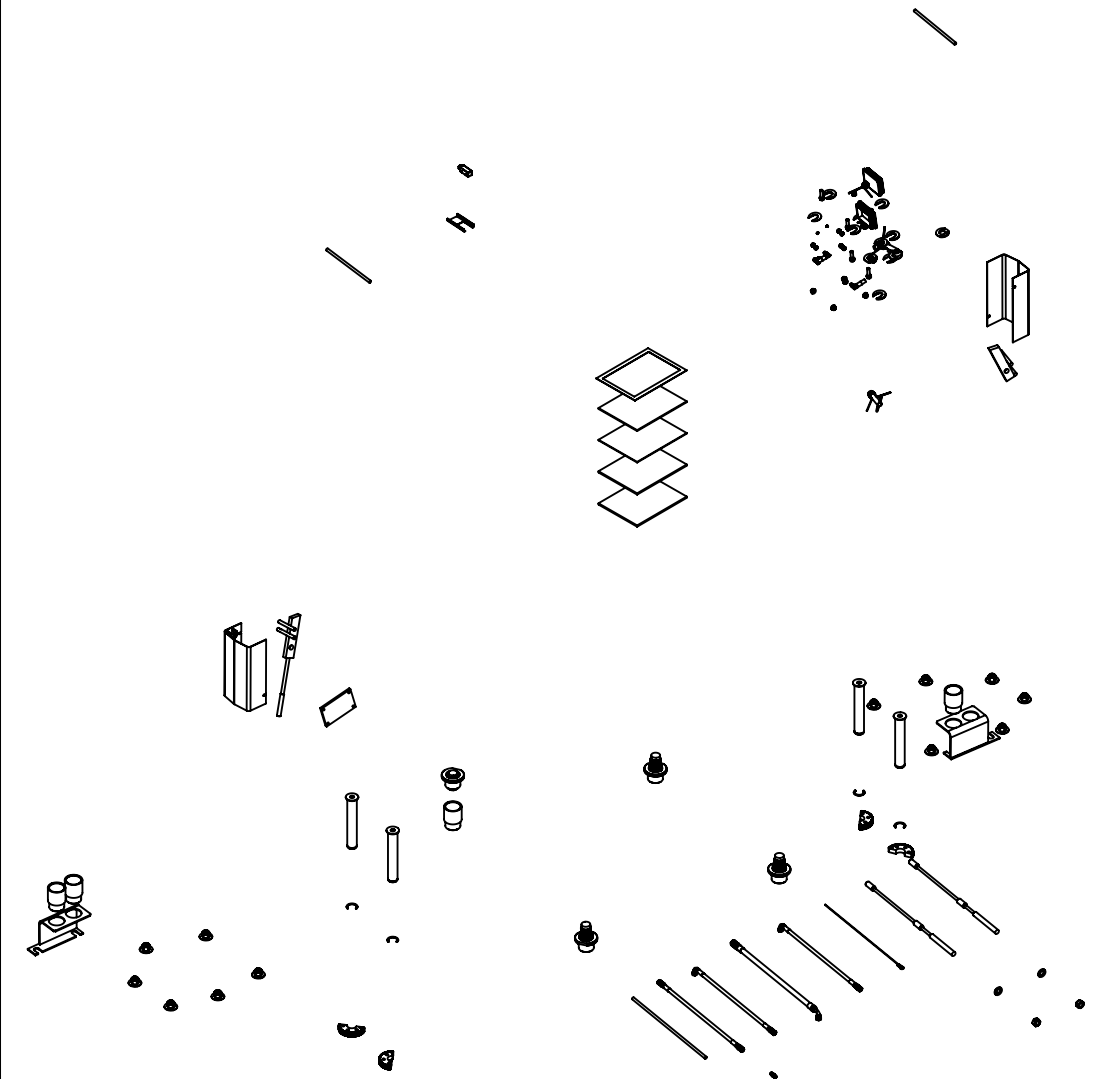
DO NOT SCALE DRAWING		NAME	DATE	 BendPak. 1645 LEMONWOOD DR. <small>HOUSTON, TEXAS 77060</small> SANTA PAULA, CA 93060
DIMENSIONS ARE IN MM 		DRAWN	TM 01/22/2010	
		CHECKED	CA 02/23/2016	
		THIRD ANGLE PROJECTION		TITLE: XPR-10 LIFT SUPERSTRUCTURE
				SIZE DWG. NO. A 5245227
		<small>PROPRIETARY AND CONFIDENTIAL THE INFORMATION CONTAINED IN THIS DRAWING IS THE SOLE PROPERTY OF BENDPAK INC. ANY REPRODUCTION IN PART OR AS A WHOLE WITHOUT THE WRITTEN PERMISSION OF BENDPAK INC. IS PROHIBITED.</small>		REV R
			SCALE: 1:30	SHEET 1 OF 1

NEXT ASSEMBLY
5260566
5260572
5260573
5260574
5260575

NOTE: UNLESS OTHERWISE SPECIFIED.

1. SEE SHIPPING INSTRUCTIONS FOR FINAL PACKAGING

REVISION				
REV	DESCRIPTION	DATE	EDITED BY	ECO#
B	UPDATED BOM REVISIONS	03/23/2016	TM	00750
C	REPLACED 5900958 WITH 5900951, UPDATED BOM REVISION	08/08/2016	TM	00771
D	UPDATED BOM REVISION	0/25/2016	TM	00777



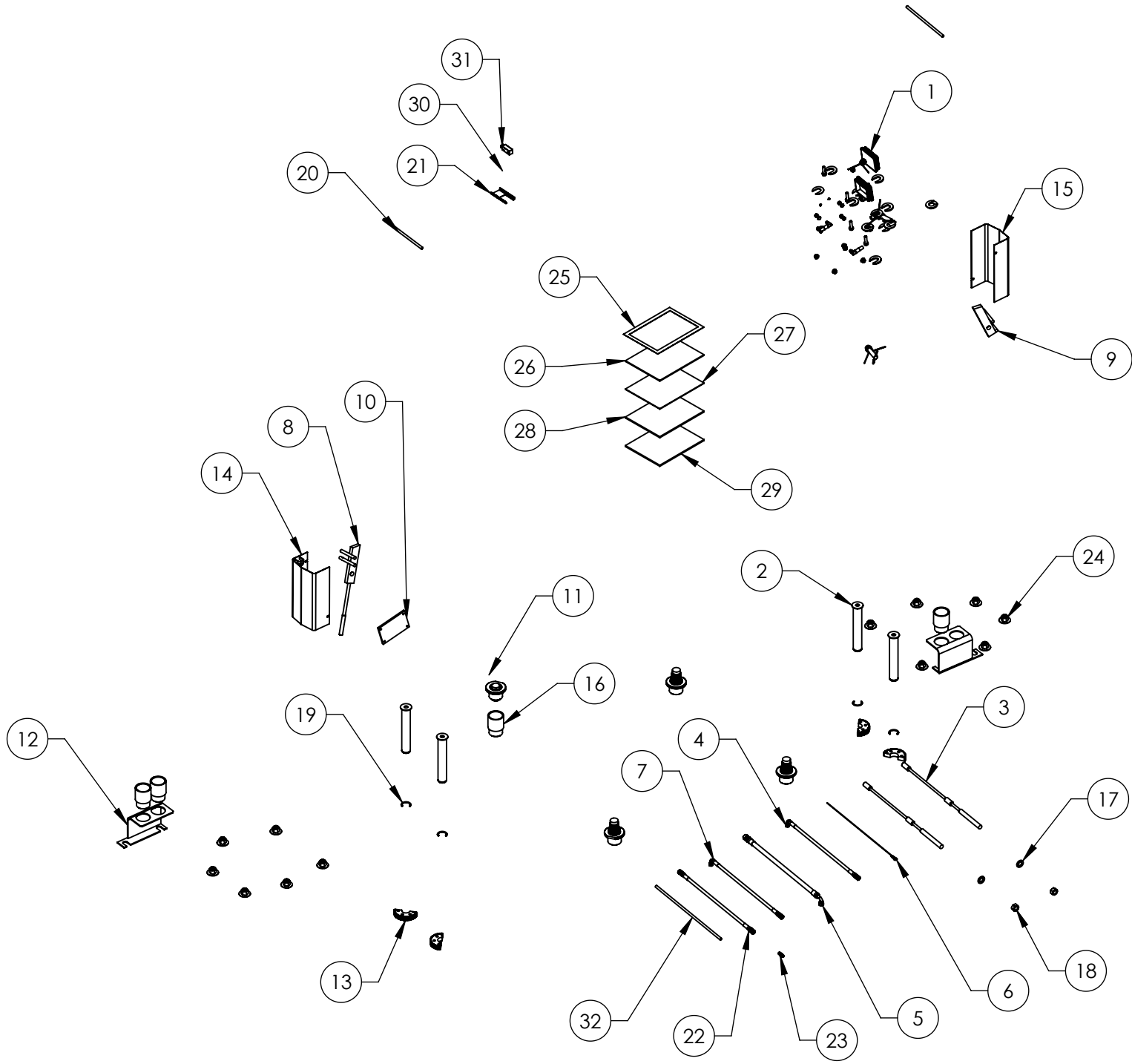
ITEM NO	PART NUMBER	DESCRIPTION	QTY	REV
1	5174518	XPR CLEARFLOOR PARTS BAG	1	J
2	5505116	XPR-9/10 LIFT HEAD PIN WELDMENT	4	D
3	5595367	XPR-10 CABLE ASSEMBLY Ø10 x 10076mm DBST	2	A
4	5570832	XPR CLEARFLOOR HYDRAULIC HOSE ASSY Ø6.35 x 2299mm SB	1	E
5	5570017	XPR HYDRAULIC HOSE ASSY Ø10 x 1219mm SB	1	C
6	5595047	XPR-10/10A Ø2.4 x 7747 SAFETY CABLE	1	E
7	5570038	XPR-10 HYDRAULIC HOSE ASSY Ø6.35 x 8015 SB	1	F
8	5210007	XPR POWER SIDE SAFETY ASSEMBLY	1	F
9	5210010	XPR OFF SIDE SAFETY WELDMENT	1	E
10	5715003	POWER UNIT VIBRATION DAMPENER	1	B
11	5215704	ROUND ADJUSTABLE LIFT PAD ASSEMBLY	4	E
12	5601058	XPR-10 SERIES POST ASSEMBLY LIFT HEAD FOOT GUARD	2	A
13	5736604	TWO POST LIGHT DUTY BOLT ON ARM RESTRAINT GEAR	4	E
14	5600163	XPR CLEARFLOOR POWER SIDE SAFETY COVER	1	E
15	5210009	XPR-9D/10/12/12FD/15/18C OFF SIDE SAFETY COVER	1	E
16	5746192	ARM ADAPTER, MEDIUM	4	D
17	5545342	WASHER M18 FLAT	2	-
18	5535358	NUT M18 x 2.5 NL	2	-
19	5540281	C RING Ø38mm OD 5103-150	4	-
20	5746167	DOUBLE THREADED ROD M10 x 1.5 x 275	2	B
21	5716634	XPR MICROSWITCH COVER, PLASTIC	1	A
22	5570176	MDS-6K, XPR-9D/10 HYDRAULIC HOSE ASSY Ø6.35 x 330mm DS	1	E
23	5550095	FTG NPL -04 JIC x -04 JIC	1	-
24	5530307	AB 3/4" x 5"	12	-
25	5905151	SAFETY TIPS CARD ALI-ST 90	1	-
26	5900147	SAFETY MANUAL ALI / SM 93-1	1	-
27	5900152	ALIGN OIM OPERATION INSPECTION & MAINTENANCE	1	-
28	5900280	ALI/LP FRAME ENGAGING LIFTS GUIDE	1	-
29	5900951	XPR-10S SERIES INSTALLATION MANUAL	1	-
30	5525150	SPDT MICRO SWITCH;25A@125VAC	1	-
31	5525112	MICRO SWITCH COVER-5PA2	1	-
32	5520116	14-4 SJO UL 62 CABLE 300vac	3635mm*	-


NOTE: UNLESS OTHERWISE SPECIFIED.

1. SEE SHIPPING INSTRUCTIONS FOR FINAL PACKAGING
2. INSERT PARTS BAG INTO PARTS BOX FOR SHIPMENT
3. THREAD 5535358 WITH 5545342 ONTO CABLES FOR SHIPMENT
4. HOSES AND CABLES IN REPRESENTATIONAL FORM
5. FOR 5220116 SPECIFICATIONS REFER TO PART SPECIFICATION FORM (*)5520116 QTY FOR REFERENCE ONLY

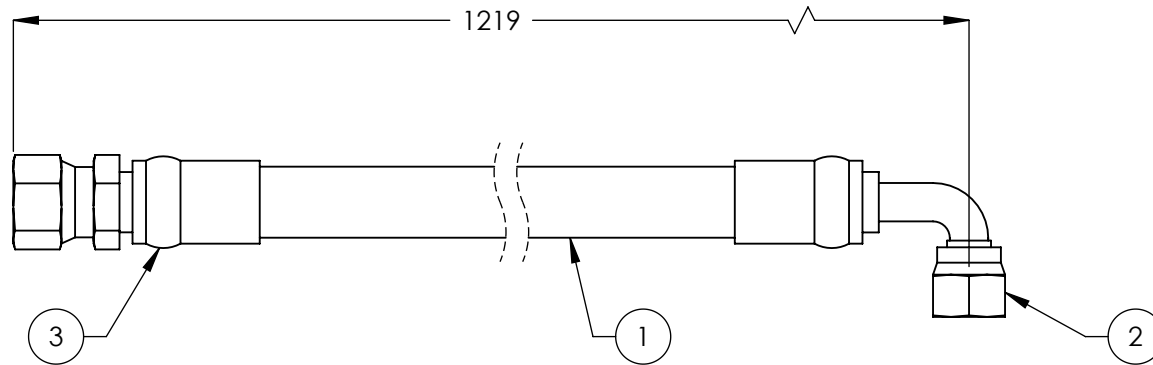
NEXT ASSEMBLY
5260566
5260572
5260575

DO NOT SCALE DRAWING	NAME	DATE	1645 LEMONWOOD DR. SANTA PAULA, CA 93060
DIMENSIONS ARE IN MM	DRAWN	TM 12/15/2015	
	CHECKED	DB 09/02/2016	
	THIRD ANGLE PROJECTION		TITLE: XPR-10S PARTS BOX
			SIZE DWG. NO. A 5250048
	<small>PROPRIETARY AND CONFIDENTIAL THE INFORMATION CONTAINED IN THIS DRAWING IS THE SOLE PROPERTY OF BENDPAK INC. ANY REPRODUCTION IN PART OR AS A WHOLE WITHOUT THE WRITTEN PERMISSION OF BENDPAK INC. IS PROHIBITED.</small>		REV D
SCALE: 1:30			SHEET 1 OF 2



 BendPak <small>INDUSTRIAL HYDRAULIC SERVICE SOLUTIONS</small>		1645 LEMONWOOD DR. SANTA PAULA, CA 93060	
TITLE: XPR-10S PARTS BOX			
SIZE A	DWG. NO. 5250048	REV D	SCALE: 1:25
			SHEET 2 OF 2

REVISION				
REV	DESCRIPTION	DATE	EDITED BY	ECO#
A	PRODUCTION RELEASE, DERIVED FROM 800399	08/27/2009	TM	00293
A-001	UPDATED NEXT ASSEMBLY	09/08/2010	TM	00396
A-002	UPDATED NEXT ASSEMBLY	04/18/2011	MT	00454
B	UPDATED TITLE TO REFLECT WHERE USED, UPDATED NEXT ASSEMBLIES	01/12/2012	TM	00490
C	UPDATED TITLE TO REFLECT WHERE USED, UPDATED NEXT ASSEMBLIES	06/21/2013	TM	00605
C-001	UPDATED NEXT ASSEMBLIES	10/16/2014	TM	00663
C-002	UPDATED NEXT ASSEMBLIES	11/24/2015	TM	00738



ITEM NO	PART NUMBER	DESCRIPTION	QTY	REV
1	5570116	Ø10 ID HYDRAULIC HOSE	1144mm*	-
2	5550337	FTG ELB -06 CRIMP x -06 JIC	1	-
3	5550336	FTG NPL -06 CRIMP x -06 JIC	1	-

NEXT ASSEMBLY
5250039
5250040
5250041
5250042
5250043
5250044
5250045
5250046
5250047
5250048
5250049

DO NOT SCALE DRAWING

DIMENSIONS ARE IN MM
TOLERANCES:
0. = ±1.5
0.0 = ±1.0
0.00 = ±0.25
0.000 = ±0.13

ANGULAR: MACH ±2°
SURFACE FINISH 1.6 ISO Ra µm
FOR MACHINED SURFACES
UNLESS OTHERWISE SPECIFIED

NAME	DATE
DRAWN TM	08/27/2009
CHECKED CA	02/22/2016

THIRD ANGLE PROJECTION

PROPRIETARY AND CONFIDENTIAL
THE INFORMATION CONTAINED IN THIS DRAWING IS
THE SOLE PROPERTY OF BENDPAK INC. ANY
REPRODUCTION IN PART OR AS A WHOLE WITHOUT
THE WRITTEN PERMISSION OF BENDPAK INC. IS
PROHIBITED.

BendPak 1645 LEMONWOOD DR.
SANTA PAULA, CA 93060

TITLE: XPR HYDRAULIC HOSE
ASSY Ø10 x 1219mm SB

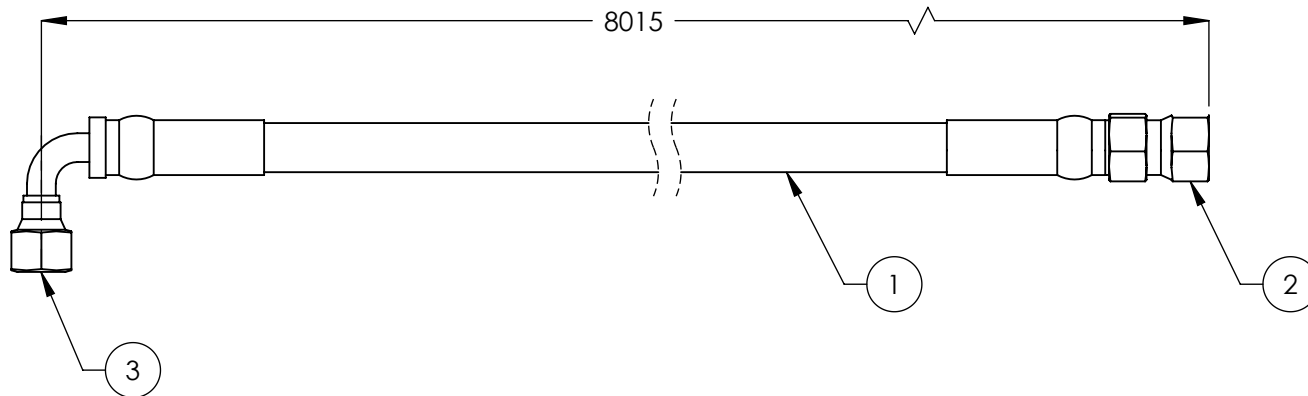
SIZE DWG. NO.	REV
A 5570017	C

SCALE: 1:2 SHEET 1 OF 1


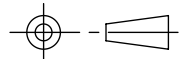
NOTE: UNLESS OTHERWISE SPECIFIED.

- FOR ITEM 1 SPECIFICATIONS REFER TO PART SPECIFICATION FORM
- (*)ITEM 1 QTY FOR REFERENCE ONLY

REV	DESCRIPTION	REVISION	DATE	EDITED BY	ECO#
D	UPDATED TITLE TO REFLECT WHERE USED, UPDATED NEXT ASSEMBLIES		07/01/2013	TM	00605
D-001	UPDATED NEXT ASSEMBLY		10/14/2013	TM	00615
D-002	UPDATED NEXT ASSEMBLY		10/16/2014	TM	00663
E	WAS 8040 NOW 8015, REPLACED 5570110 WITH 5570129 TO REFLECT INVENTORY, UPDATED TITLE TO REFLECT WHERE USED AND NEXT ASSEMBLIES		11/20/2014	TM	00673
F	UPDATED TITLE TO REFLECT MARKETING, UPDATED NEXT ASSEMBLY		12/01/2015	TM	00738



ITEM NO.	PART NUMBER	DESCRIPTION	QTY.	REV
1	5570129	Ø6.4 ID HYDRAULIC HOSE	7965mm*	--
2	5550325	FTG NPL Ø1/4 CRIMP x -04 JIC	1	--
3	5550345	FTG ELB Ø1/4 CRIMP x -04 JIC	1	--

DO NOT SCALE DRAWING		NAME	DATE	 1645 LEMONWOOD DR. SANTA PAULA, CA 93060
DIMENSIONS ARE IN MM TOLERANCES: 0. = ±1.5 0.0 = ±1.0 0.00 = ±0.25 0.000 = ±0.13 ANGULAR: MACH ±2° SURFACE FINISH 1.6 ISO Ra µm FOR MACHINED SURFACES UNLESS OTHERWISE SPECIFIED		DRAWN	GJ 10/22/2008	
		CHECKED	CA 02/22/2016	
		THIRD ANGLE PROJECTION		TITLE:
				XPR-10 HYDRAULIC HOSE ASSY Ø6.35 x 8015 SB
		PROPRIETARY AND CONFIDENTIAL THE INFORMATION CONTAINED IN THIS DRAWING IS THE SOLE PROPERTY OF BENDPAK INC. ANY REPRODUCTION IN PART OR AS A WHOLE WITHOUT THE WRITTEN PERMISSION OF BENDPAK INC. IS PROHIBITED.		SIZE DWG. NO.
		A		5570038
				REV
				F
SCALE: 1:2				SHEET 1 OF 1


NOTE: UNLESS OTHERWISE SPECIFIED.

- FOR ITEM 1 SPECIFICATIONS REFER TO PART SPECIFICATION FORM
- (*)ITEM 1 QTY FOR REFERENCE ONLY

NEXT ASSEMBLY
5250048

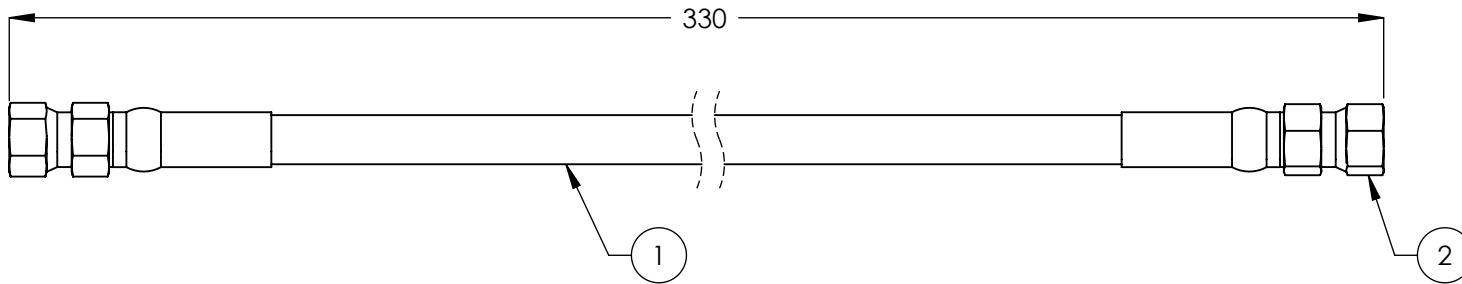
PART SPECIFICATION FORM

BENDPAK Number:	5570129
MRP Description:	1/4" HYDRAULIC HOSE 31CL-0400X
Date:	11/10/2015
ECO :	00734


1. Engineering Specification	
<u>Application:</u>	1/4" HYDRAULIC HOSE
<u>Detailed Description:</u>	
ONE or TWO BRAID STEEL WIRE HYDRAULIC HOSE	
SIZE: 1/4" / 6.3mm I.D. 0.53" / 13.4mm O.D.	
SPECS: 3000PSI OR 207 BAR WORKING PRESSURE 12000PSI OR 827 BAR MINIMUM BURST PRESSURE 2" / 50mm MIN BEND RADIUS	
COLOR: BLACK	

2. Vendor Information			
Approved Vendor	Vendor Part #	Contact #	Preferred Vendor
1) PARKER	387-4	02283962772	
2)			
OR BENDPAK ENGINEERING APPROVED EQUIVALENT			

REVISION				
REV	DESCRIPTION	DATE	EDITED BY	ECO#
C	UPDATED TITLE TO REFLECT WHERE USED AND NEXT ASSEMBLIES	10/07/2014	TM	00663
D	REPLACED 5570110 WITH 5570129 TO REFLECT INVENTORY	11/20/2014	TM	00673
E	UPDATED TITLE TO REFLECT WHERE USED, UPDATED NEXT ASSEMBLIES	07/22/2015	JM	00712
E-001	UPDATED NEXT ASSEMBLIES	02/22/2016	CA	00738



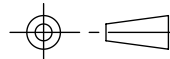
ITEM NO.	PART NUMBER	DESCRIPTION	QTY.	REV
1	5570129	Ø6.4 ID HYDRAULIC HOSE	264mm*	--
2	5550325	FTG NPL Ø1/4 CRIMP x -04 JIC	2	--

DO NOT SCALE DRAWING	NAME	DATE	 1645 LEMONWOOD DR. SANTA PAULA, CA 93060
	DRAWN	TM 08/30/2010	
	CHECKED	CA 02/22/2016	

NEXT ASSEMBLY
5240821
5250031
5250032
5250037
5250038
5250048
5250243

DIMENSIONS ARE IN MM
 TOLERANCES:
 0. = ±1.5
 0.0 = ±1.0
 0.00 = ±0.25
 0.000 = ±0.13
 ANGULAR: MACH ±2°
 SURFACE FINISH 1.6 ISO Ra µm
 FOR MACHINED SURFACES
 UNLESS OTHERWISE SPECIFIED

THIRD ANGLE PROJECTION



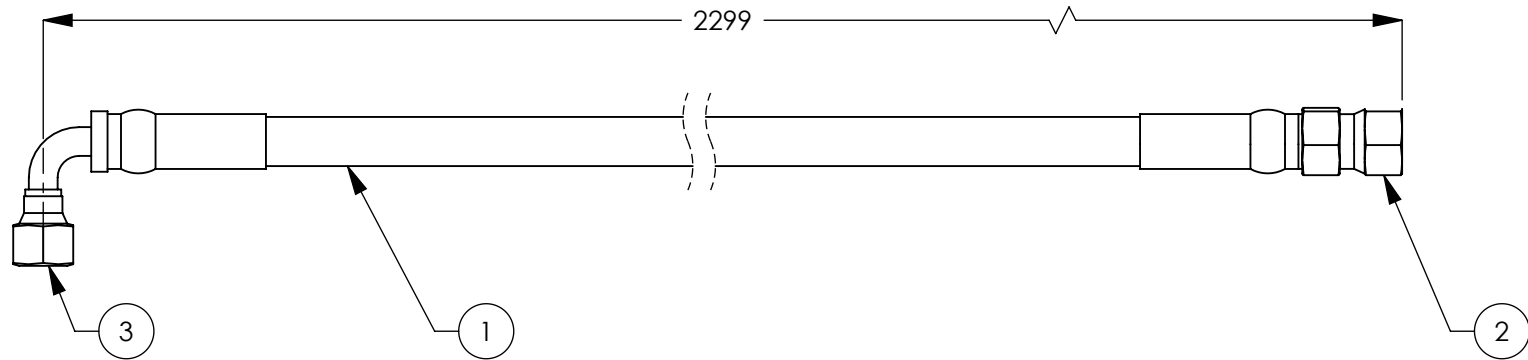
PROPRIETARY AND CONFIDENTIAL
 THE INFORMATION CONTAINED IN THIS DRAWING IS
 THE SOLE PROPERTY OF BENDPAK INC. ANY
 REPRODUCTION IN PART OR AS A WHOLE WITHOUT
 THE WRITTEN PERMISSION OF BENDPAK INC. IS
 PROHIBITED.

TITLE: MDS-6K, XPR-9D/10 HYDRAULIC HOSE ASSY Ø6.35 x 330mm DS	
SIZE DWG. NO.	REV
A 5570176	E
SCALE: 1:2	
SHEET 1 OF 1	

NOTE: UNLESS OTHERWISE SPECIFIED.

- FOR ITEM 1 SPECIFICATIONS REFER TO PART SPECIFICATION FORM
- (*)ITEM 1 QTY FOR REFERENCE ONLY

REV	DESCRIPTION	DATE	EDITED BY	ECO#
C	UPDATED TITLE TO REFLECT WHERE USED, UPDATED NEXT ASSEMBLIES	02/07/2012	TM	00490
D	UPDATED TITLE TO REFLECT WHERE USED, UPDATED NEXT ASSEMBLIES	06/27/2017	TM	00605
D-001	UPDATED NEXT ASSEMBLIES	10/16/2014	TM	00663
E	REPLACED 5570110 WITH 5570129 TO REFLECT INVENTORY	11/20/2014	TM	00673
E-001	UPDATED NEXT ASSEMBLIES	11/24/2015	TM	00738



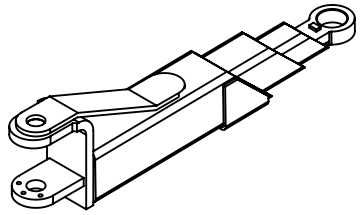
ITEM NO	PART NUMBER	DESCRIPTION	QTY	REV
1	5570129	Ø6.4 ID HYDRAULIC HOSE	2249mm*	--
2	5550325	FTG NPL Ø1/4 CRIMP x -04 JIC	1	--
3	5550345	FTG ELB Ø1/4 CRIMP x -04 JIC	1	--

NEXT ASSEMBLY	DO NOT SCALE DRAWING	NAME	DATE	BendPak. 1645 LEMONWOOD DR. SANTA PAULA, CA 93060		
5250039	DIMENSIONS ARE IN MM TOLERANCES: 0. = ±1.5 0.0 = ±1.0 0.00 = ±0.25 0.000 = ±0.13 ANGULAR: MACH±2° SURFACE FINISH 1.6 ISO R _a μm FOR MACHINED SURFACES UNLESS OTHERWISE SPECIFIED	DRAWN	GJ	10/13/2008	TITLE: XPR CLEARFLOOR HYDRAULIC HOSE ASSY Ø6.35 x 2299mm SB	
5250040		CHECKED	CA	02/22/2016		
5250041		THIRD ANGLE PROJECTION				
5250042					SIZE DWG. NO. REV A 5570832 E	
5250043		PROPRIETARY AND CONFIDENTIAL THE INFORMATION CONTAINED IN THIS DRAWING IS THE SOLE PROPERTY OF BENDPAK INC. ANY REPRODUCTION IN PART OR AS A WHOLE WITHOUT THE WRITTEN PERMISSION OF BENDPAK INC. IS PROHIBITED.			SCALE: 1:2	SHEET 1 OF 1
5250044						
5250045						
5250046						
5250047						
5250048						
5250049						

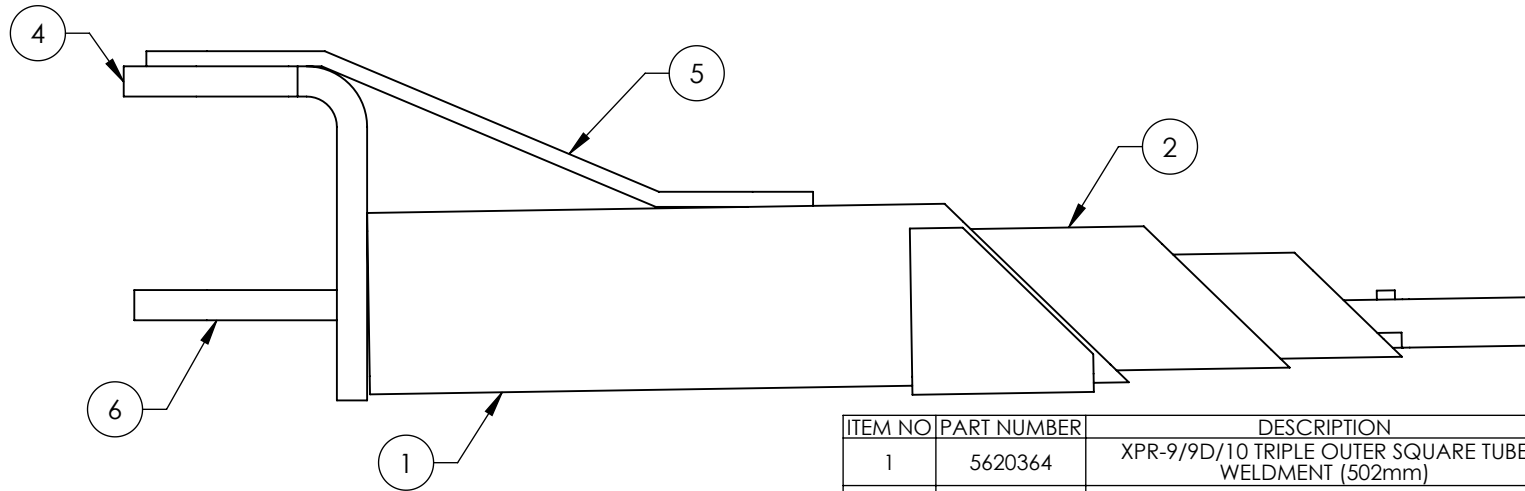
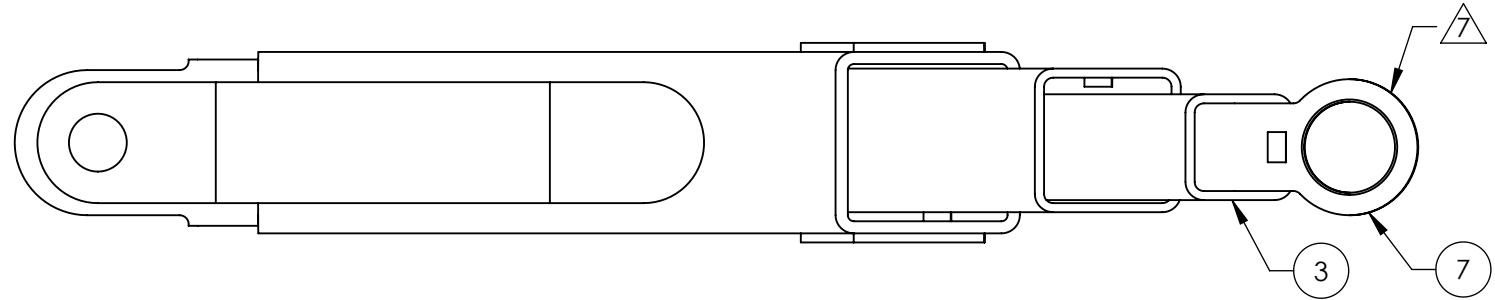
NOTE: UNLESS OTHERWISE SPECIFIED.

- FOR ITEM 1 SPECIFICATIONS REFER TO PART SPECIFICATION FORM
- (*)ITEM 1 QTY FOR REFERENCE ONLY

REVISION				
REV	DESCRIPTION	DATE	EDITED BY	ECO#
A	PRODUCTION RELEASE, DERIVED FROM 5600424	06/23/2015	JM	00708
B	REPLACED 5736906 WITH 5601026	09/22/2015	TM	00729
C	UPDATED BOM REVISION	03/22/2016	TM	00750



ISOMETRIC VIEW
FOR REFERENCE ONLY
DO NOT SCALE



ITEM NO	PART NUMBER	DESCRIPTION	QTY	REV
1	5620364	XPR-9/9D/10 TRIPLE OUTER SQUARE TUBE WELDMENT (502mm)	1	D
2	5620365	XPR-9/9D/10 TRIPLE MIDDLE SQUARE TUBE WELDMENT (502mm)	1	D
3	5620326	XPR-9/9D/10 TRIPLE ARM LOW PROFILE INNER SQUARE TUBE WELDMENT (502mm)	1	A
4	5701153	XPR-9/10 ARM EAR	1	D
5	5736286	XPR 9/10 TRIPLE ARM SUPPORT	1	C
6	5701068	XPR-9/10 BOLT ON EAR PLATE	1	E
7	5736906	ARM ADAPTOR 58mm WIDE WELDMENT	1	B

NOTE: UNLESS OTHERWISE SPECIFIED.

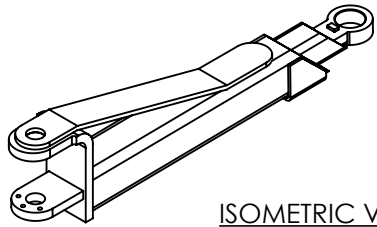
1. BREAK AND DEBURR ALL SHARP EDGES 0.3mm
2. REMOVE ALL WELD SPLATTER
3. MASK ALL THREADED HOLES AND BORES
4. DIMENSIONS SHOWN ARE AFTER PAINTING
5. PAINT BENDPAK YELLOW
6. 5620326 & 5620365 MUST SLIDE FREELY



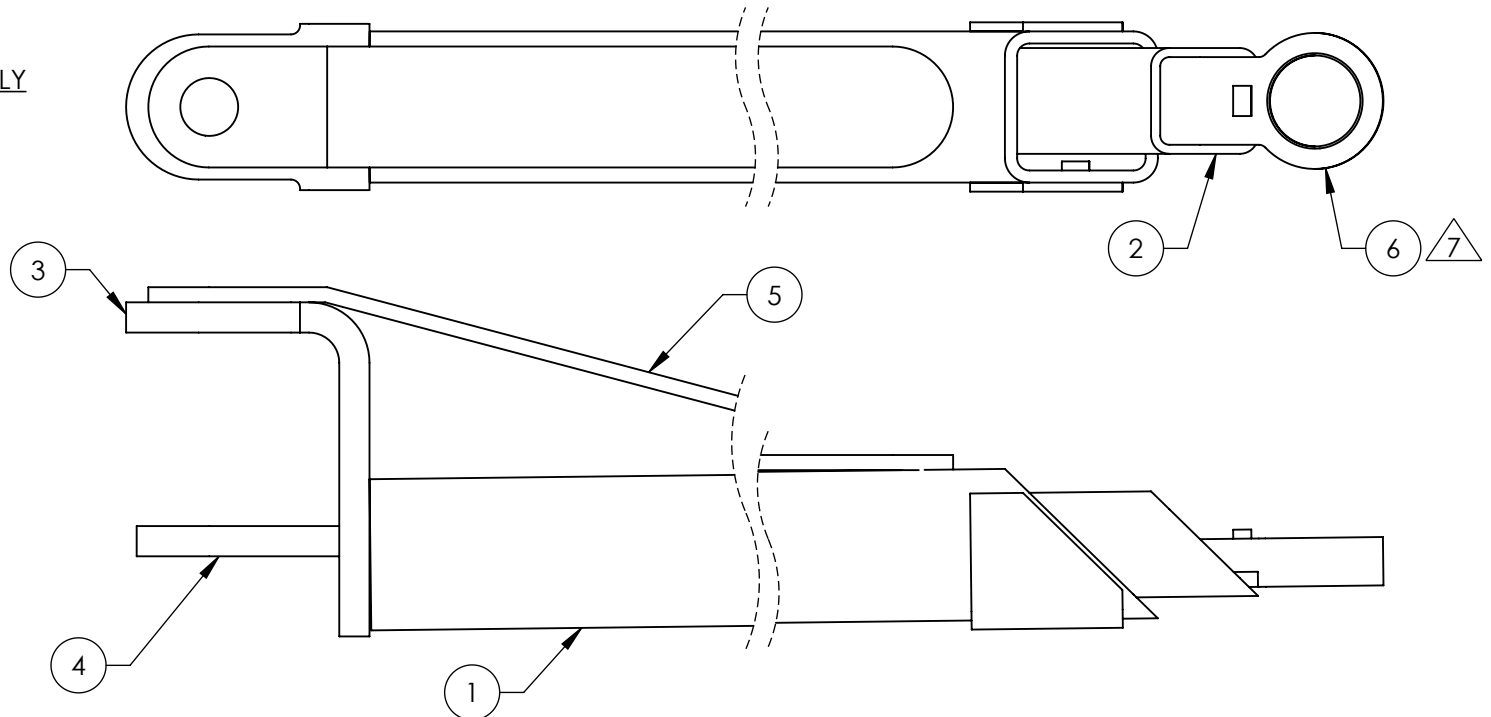
WELD 5736906 TO 5620326 AFTER INSTALLING 5620326 THROUGH 5620365 AS SHOWN.

NEXT ASSEMBLY
5215287

DO NOT SCALE DRAWING	NAME	DATE	1645 LEMONWOOD DR. SANTA PAULA, CA 93060
DIMENSIONS ARE IN MM TOLERANCES: 0. = ±1.5 0.0 = ±0.5 ANGULAR: 0. = ±2° SURFACE FINISH 1.6 ISO Ra μm FOR MACHINED SURFACES UNLESS OTHERWISE SPECIFIED	DRAWN	JM 06/23/2015	
	CHECKED	CA 04/26/2016	
THIRD ANGLE PROJECTION		TITLE:	
		XPR-9/9D/10 LOW PROFILE TRIPLE TELESCOPING ARM WELDMENT	
PROPRIETARY AND CONFIDENTIAL THE INFORMATION CONTAINED IN THIS DRAWING IS THE SOLE PROPERTY OF BENDPAK INC. ANY REPRODUCTION IN PART OR AS A WHOLE WITHOUT THE WRITTEN PERMISSION OF BENDPAK INC. IS PROHIBITED.		SIZE DWG. NO.	REV
		A 5600997	C
SCALE: 1:5			SHEET 1 OF 3



ISOMETRIC VIEW
FOR REFERENCE ONLY
DO NOT SCALE



REVISION				
REV	DESCRIPTION	DATE	EDITED BY	ECO#
A	PRODUCTION RELEASE, DERIVED FROM 5600423	06/23/2015	JM	00708
B	REPLACED 5736906 WITH 5601026	09/22/2015	TM	00729
C	UPDATED TITLE TO REFLECT MARKETING, UPDATED BOM REVISION	03/22/2016	TM	00750

ITEM NO	PART NUMBER	DESCRIPTION	QTY	REV
1	5620363	XPR-9/9D/10 OUTER SQUARE TUBE WELDMENT (676mm)	1	D
2	5620327	XPR-9/9D/10 LOW PROFILE TWO STAGE INNER ARM WELDMENT (676mm)	1	A
3	5701153	XPR-9/10 ARM EAR	1	D
4	5701068	XPR-9/10 BOLT ON EAR PLATE	1	E
5	5736283	XPR-9/9D/10 EXTRA LONG ARM SUPPORT	1	D
6	5601026	ARM ADAPTOR 58mm WIDE WELDMENT	1	B

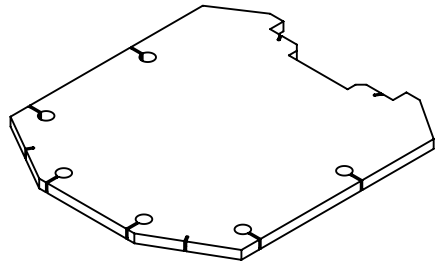
NOTE: UNLESS OTHERWISE SPECIFIED.

1. BREAK AND DEBURR ALL SHARP EDGES 0.3mm
2. REMOVE ALL WELD SPLATTER
3. MASK ALL THREADED HOLES AND BORES
4. DIMENSIONS SHOWN ARE AFTER PAINTING
5. PAINT BENDPAK YELLOW
6. 5620327 MUST SLIDE FREELY
7. WELD 5736906 TO 5620327 AFTER INSTALLING 5620327 THROUGH 5620363 AS SHOWN.

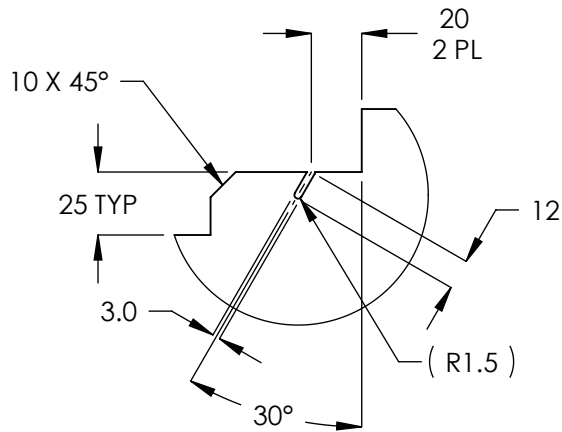
NEXT ASSEMBLY
5215700

DO NOT SCALE DRAWING	NAME	DATE	BendPak 1645 LEMONWOOD DR. SANTA PAULA, CA 93060 <small>PROVIDING AUTOMATIC SERVICE SOLUTIONS</small>
DIMENSIONS ARE IN MM TOLERANCES: 0. = ±1.5 0.0 = ±0.5 ANGULAR: 0. = ±2° SURFACE FINISH 1.6 ISO Ra μm FOR MACHINED SURFACES UNLESS OTHERWISE SPECIFIED	DRAWN	JM 06/23/2015	
	CHECKED	CA 04/26/2016	
THIRD ANGLE PROJECTION			
PROPRIETARY AND CONFIDENTIAL THE INFORMATION CONTAINED IN THIS DRAWING IS THE SOLE PROPERTY OF BENDPAK INC. ANY REPRODUCTION IN PART OR AS A WHOLE WITHOUT THE WRITTEN PERMISSION OF BENDPAK INC. IS PROHIBITED.			TITLE: XPR-9S/9DS/10S LOW PROFILE MEDIUM ARM WELDMENT
SIZE DWG. NO.		REV	
A 5600998		C	
SCALE: 1:5			SHEET 1 OF 3

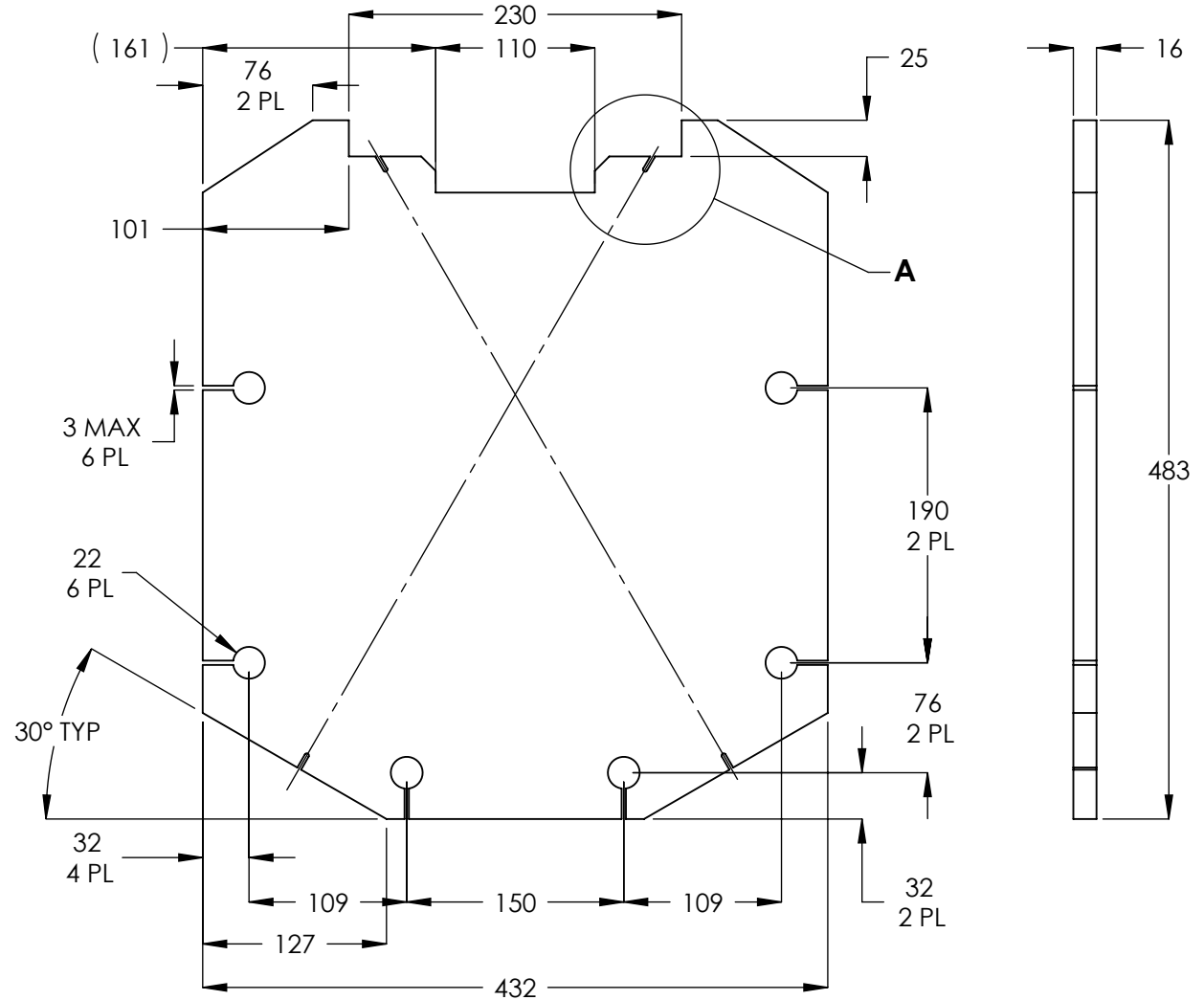
REV	DESCRIPTION	REVISION	DATE	EDITED BY	ECO#
A	PRODUCTION RELEASE, DERIVED FROM 800138		08/19/2009	TM	00293
B	UPDATED TITLE TO REFLECT WHERE USED		06/03/2010	TM	00367
C	UPDATED TITLE TO REFLECT MARKETING		11/23/2015	TM	00738



ISOMETRIC VIEW
FOR REFERENCE ONLY
DO NOT SCALE



DETAIL A
SCALE 1 : 3



NOTE: UNLESS OTHERWISE SPECIFIED.

- BREAK AND DEBURR ALL SHARP EDGES 0.3mm
- MATERIAL:** HR ASTM A36 OR Q235 GB/T 700
- FLAME CUT EDGES PERMISSABLE

NEXT ASSEMBLY
5620352

DO NOT SCALE DRAWING	NAME	DATE	1645 LEMONWOOD DR. SANTA PAULA, CA 93060	
DIMENSIONS ARE IN MM TOLERANCES: MACHINE TO 0 = ±1.5 0.0 = ±0.5 0.00 = ±0.13 ANGULAR: MACHINE TO 0 = ±1/2° SURFACE FINISH 1.6 Ra μm FOR MACHINED SURFACES UNLESS OTHERWISE SPECIFIED	DRAWN	TM		08/19/2009
	CHECKED	CA		02/08/2016
THIRD ANGLE PROJECTION 			TITLE:	
			XPR-10 BASE PLATE	
		SIZE	DWG. NO.	REV
		A	5736296	C
			SCALE: 1:5	SHEET 1 OF 1

PART SPECIFICATION FORM

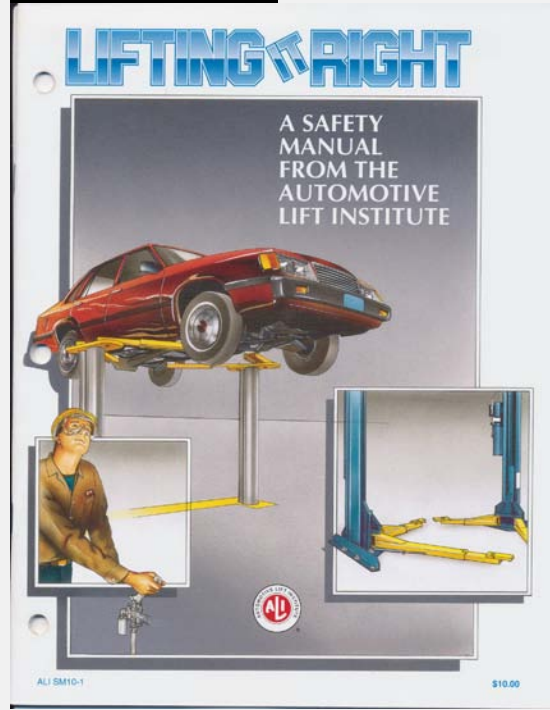
BENDPAK Number:	5900147
MRP Description:	SAFETY MANUAL ALI / SM 93-1
Date:	12/28/2010
ECO :	00431

1. Engineering Specification

Application:

ALI SAFETY MANUAL

Detailed Description:



2. Vendor Information

Approved Vendor	Vendor Part #	Contact #	Preferred Vendor
1)			

PART SPECIFICATION FORM

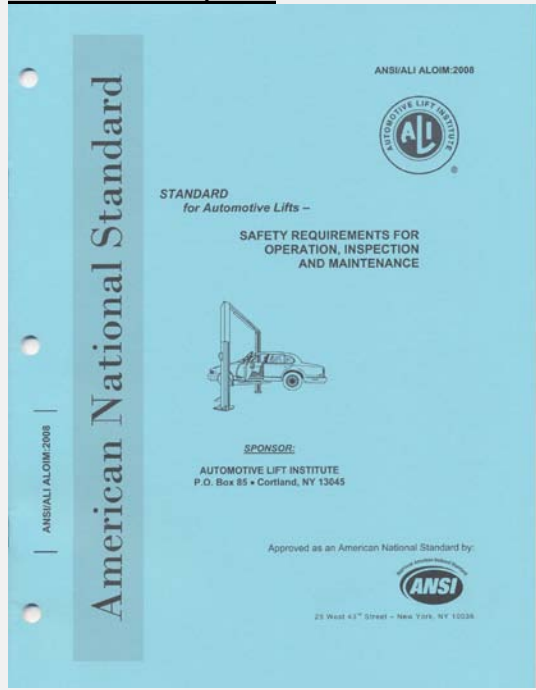
BENDPAK Number:	5900152
MRP Description:	ALIGN OIM OPERATION INSPECTION & MAINTENANCE
Date:	12/28/2010
ECO :	00431

1. Engineering Specification

Application:

ALI OPERATION INSPECTION & MAINTENANCE MANUAL

Detailed Description:



2. Vendor Information

Approved Vendor	Vendor Part #	Contact #	Preferred Vendor
1)			

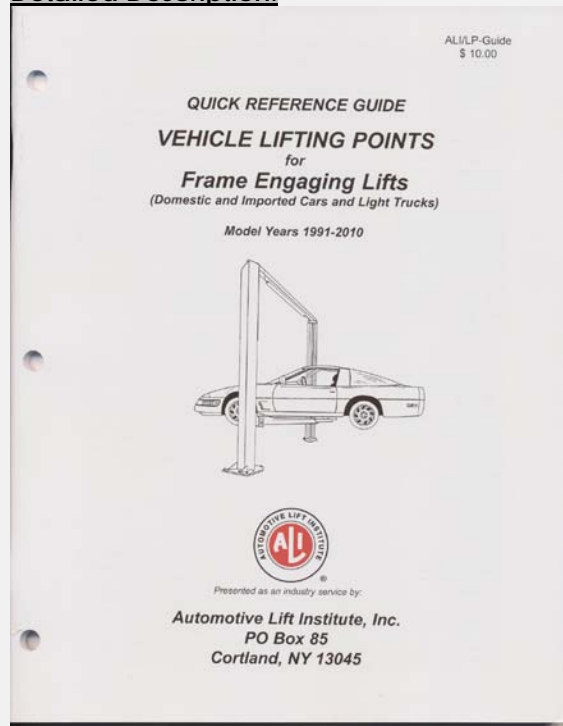
PART SPECIFICATION FORM

BENDPAK Number:	5900280
MRP Description:	ALI/LP FRAME ENGAGING LIFTS GUIDE
Date:	12/28/2010
ECO :	00431

1. Engineering Specification

Application:
 ALI LIFTING GUIDE

Detailed Description:



2. Vendor Information

Approved Vendor	Vendor Part #	Contact #	Preferred Vendor
1)			

PART SPECIFICATION FORM

BENDPAK Number:	5905109
MRP Description:	WARNING ALI/WL 101
Date:	06/18/2013
ECO :	00605


1. Engineering Specification

Application:

ALI 2 POST SAFETY STICKER KIT

Detailed Description:

SIZE: 14" L x 8.5" W (356mm x 216mm)



Automotive Lift Institute, Inc
WL 101 Series
Label Kit

2. Vendor Information

Approved Vendor	Vendor Part #	Contact #	Preferred Vendor
1)			

PART SPECIFICATION FORM

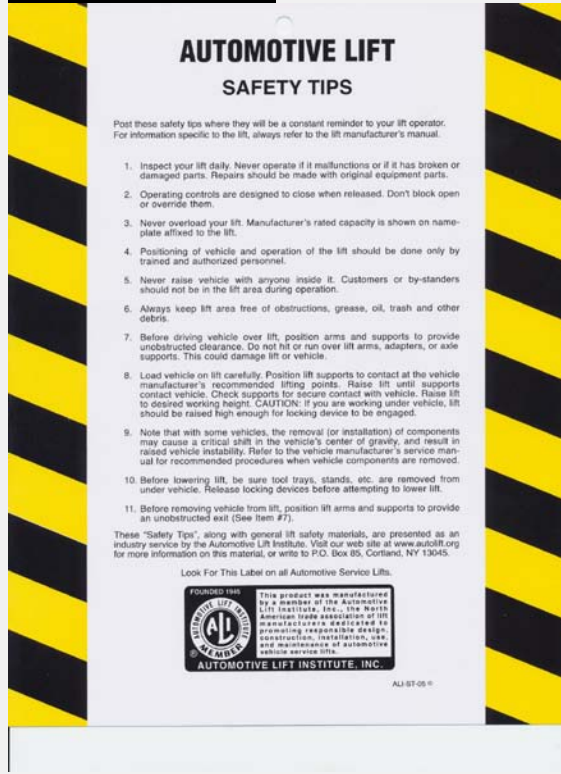
BENDPAK Number:	5905151
MRP Description:	SAFETY TIPS CARD ALI-ST 90
Date:	12/28/2010
ECO :	00431

1. Engineering Specification

Application:

ALI SAFETY TIPS

Detailed Description:



2. Vendor Information

Approved Vendor	Vendor Part #	Contact #	Preferred Vendor
1)			

PART SPECIFICATION FORM

BENDPAK Number:	5905177
MRP Description:	TO PROLONG LIFT OF TWO
Date:	06/18/2013
ECO :	00605

1. Engineering Specification

Application:

RED CYLINDER WARNING

Detailed Description:

SIZE: 3" L x 1.75" W (76mm x 44mm)

PLEASE READ

Internal packing oil may cause the cylinders to bleed oil during start up. This is normal. To extend cylinder and seal life, raise the lift to full height at least once every day.

2. Vendor Information

Approved Vendor	Vendor Part #	Contact #	Preferred Vendor
1)			

PART SPECIFICATION FORM

BENDPAK Number:	5905311
MRP Description:	BENDPAK LABEL; 4 x 38" WHITE INK
Date:	05/13/2015
ECO :	00689

1. Engineering Specification

Application:

BENDPAK LABEL

Detailed Description:



SIZE: 38" L x 4.25" W (965mm x 108mm)

- Material: Yellow Represents Clear Adhesive PET
- Size: 4.25"W x 38"H
- Thickness: 4 Mil
- Finish: Polished
- Ink: U.V. protected, Opaque White
- Print Process: Silk Screen, 85 line-screen (Opaque White ink, clear adhesive PET will fill in blank areas.)
- Lamination: Clear-gloss over-laminate for abrasion, chemical, and ultra violet protection

2. Vendor Information

Approved Vendor	Vendor Part #	Contact #	Preferred Vendor
1)			

PART SPECIFICATION FORM

BENDPAK Number:	5905403
MRP Description:	MAX CAP DANGER 10K
Date:	06/21/2013
ECO :	00605

1. Engineering Specification

Application:

LIFT CAPACITY STICKER

Detailed Description:



SIZE: 3.25" L x 4.5" W (82mm x 114mm)

P/N 5905403

2. Vendor Information

Approved Vendor	Vendor Part #	Contact #	Preferred Vendor
1)			

PART SPECIFICATION FORM

BENDPAK Number:	5905465
MRP Description:	MANUFACTURER LABEL
Date:	05/07/2013
ECO :	00593

1. Engineering Specification

Application:

MANUFACTURER LABEL

Detailed Description:

MFD. BY BENDPAK INC.

LIFT TYPE: SURFACE MOUNT CAPACITY: MED/HVY DTY
 POWER: ELECTRIC/HYDRAULIC ANCHORS: AS EQUIPPED
 INSTALLATION - SEE OWNERS GUIDE OR CONTACT FACTORY

SIZE: 5.125" L x 5.125" W (130mm x 130mm)

SHIPPING DAMAGE CLAIMS

WHEN THIS EQUIPMENT IS SHIPPED, TITLE PASSES TO THE PURCHASER UPON RECEIPT FROM THE CARRIER. CONSEQUENTLY, CLAIMS FOR THE MATERIAL DAMAGED IN SHIPMENT MUST BE MADE BY THE PURCHASER AGAINST THE TRANSPORTATION COMPANY AT THE TIME SHIPMENT IS RECEIVED.

PLEASE READ ALL OPERATORS/USERS MANUAL(S) PRIOR TO INSTALLATION AND OPERATION. UNDERSTAND AND COMPREHEND THE FULL CONTENTS OF EACH MANUAL(S) PRIOR TO INSTALLATION AND OPERATION. DELIVER THE MANUAL(S) TO ALL OPERATORS. FAILURE TO OPERATE THIS EQUIPMENT AS DIRECTED MAY CAUSE INJURY OR DEATH.

IMPORTANT NOTE:

BENDPAK LIFTS ARE SUPPLIED WITH CONCRETE FASTENERS MEETING THE CRITERIA AS PRESCRIBED BY ASTM E488 - 96(2003). LIFT BUYERS ARE RESPONSIBLE FOR ANY SPECIAL REGIONAL STRUCTURAL AND/OR SEISMIC ANCHORING REQUIREMENTS SPECIFIED BY ANY OTHER AGENCIES AND/OR CODES SUCH AS THE UNIFORM BUILDING CODE (UBC) AND/OR INTERNATIONAL BUILDING CODE (IBC).



INTERNAL BAR CODE - FOR FACTORY AUDIT ONLY 34086

BPK	STYOT	P20KVR	X18576	HVY DTY/ GVR 832
-----	-------	--------	--------	---------------------

THE MANUFACTURE, USE, SALE OR IMPORT OF THIS PRODUCT MAY BE SUBJECT TO ONE OR MORE UNITED STATES PATENTS, OR PENDING APPLICATIONS, OWNED BY BENDPAK, INC.

ENGINEERED BY BENDPAK INC USA

MADE IN CHINA

2. Vendor Information

Approved Vendor	Vendor Part #	Contact #	Preferred Vendor
1)			

PART SPECIFICATION FORM

BENDPAK Number:	5905555
MRP Description:	2-POST SAFETY DECAL
Date:	06/18/2013
ECO :	00605

1. Engineering Specification

Application:
 2-POST SAFETY DECAL

Detailed Description:




SIZE: 28.5" L x 4" W (724m x 100mm)

2. Vendor Information

Approved Vendor	Vendor Part #	Contact #	Preferred Vendor
1)			

PART SPECIFICATION FORM

BENDPAK Number:	5905655
MRP Description:	MAX CAP NRTL DANGER 10K
Date:	05/06/2013
ECO :	00593

1. Engineering Specification	
Application: LIFT CAPACITY STICKER FOR CE LIFTS	
Detailed Description:	<p><u>SIZE:</u> 3.25" L x 4.5" W (82mm x 114mm)</p>
	

2. Vendor Information			
Approved Vendor	Vendor Part #	Contact #	Preferred Vendor
1)			

PART SPECIFICATION FORM

BENDPAK Number:	5905940
MRP Description:	PRODUCT DATA LABEL
Date:	05/06/2013
ECO :	00593

1. Engineering Specification

Application:

PRODUCT DATA LABEL

Detailed Description:

	SANTA PAULA, CA USA WWW.BENDPAK.COM
LIFT TYPE: SURFACE MOUNT CAP: MED/HVY DTY MFG. BPK SEE DATA PLATE FOR PRODUCT DETAILS POWER: ELECTRIC/HYDRAULIC INSTALLATION - SEE OWNERS GUIDE OR CONTACT FACTORY	
<p>SAFETY INSTRUCTIONS: IF ATTACHMENTS, ACCESSORIES OR CONFIGURATION MODIFYING COMPONENTS THAT ARE LOCATED IN THE LOAD PATH, AFFECT OPERATION OF THE LIFT, AFFECT THE LIFT ELECTRICAL LISTING OR AFFECT INTENDED VEHICLE ACCOMMODATION ARE USED ON THIS LIFT AND, IF THEY ARE NOT CERTIFIED FOR USE ON THIS LIFT, THEN THE CERTIFICATION OF THIS LIFT SHALL BECOME NULL AND VOID. CONTACT THE PARTICIPANT FOR INFORMATION PERTAINING TO CERTIFIED ATTACHMENTS, ACCESSORIES OR CONFIGURATION MODIFYING COMPONENTS.</p> <p>BENDPAK LIFTS ARE SUPPLIED WITH CONCRETE FASTENERS MEETING THE CRITERIA AS PRESCRIBED BY ASTM E488 - 96(2003). LIFT BUYERS ARE RESPONSIBLE FOR ANY SPECIAL REGIONAL STRUCTURAL AND/OR SEISMIC ANCHORING REQUIREMENTS SPECIFIED BY ANY OTHER AGENCIES AND/OR CODES SUCH AS THE UNIFORM BUILDING CODE (UBC) AND/OR INTERNATIONAL BUILDING CODE (IBC).</p> <p>THE MANUFACTURE, USE, SALE OR IMPORT OF THIS PRODUCT MAY BE SUBJECT TO ONE OR MORE UNITED STATES PATENTS, OR PENDING APPLICATIONS, OWNED BY BENDPAK, INC. DO NOT REMOVE ENGINEERED BY BENDPAK INC. USA MADE IN CHINA</p>	

SIZE: 2.3" L x 4.5" W (58mm x 114mm)

2. Vendor Information

Approved Vendor	Vendor Part #	Contact #	Preferred Vendor
1)			

PART SPECIFICATION FORM

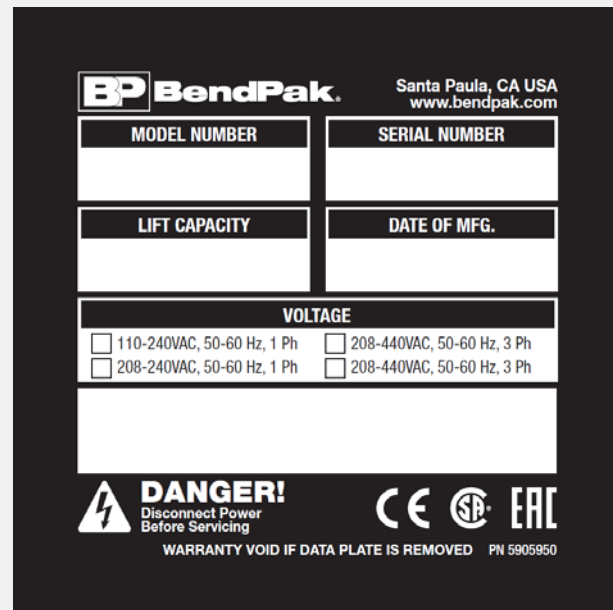
BENDPAK Number:	5905950
MRP Description:	2015_SERIAL_TAG-A-5905950
Date:	11/06/2015
ECO :	00738

1. Engineering Specification

Application:

DATA SERIAL TAG 2 POST CE

Detailed Description:



SIZE: 3.48" L x 3.50" W
(88.4mm x 88.9mm)

2. Vendor Information (Or for Reference)

Approved Vendor	Vendor Part #	Contact #	Preferred Vendor
1)			
2)			
OR BENDPAK ENGINEERING APPROVED EQUIVALENT			