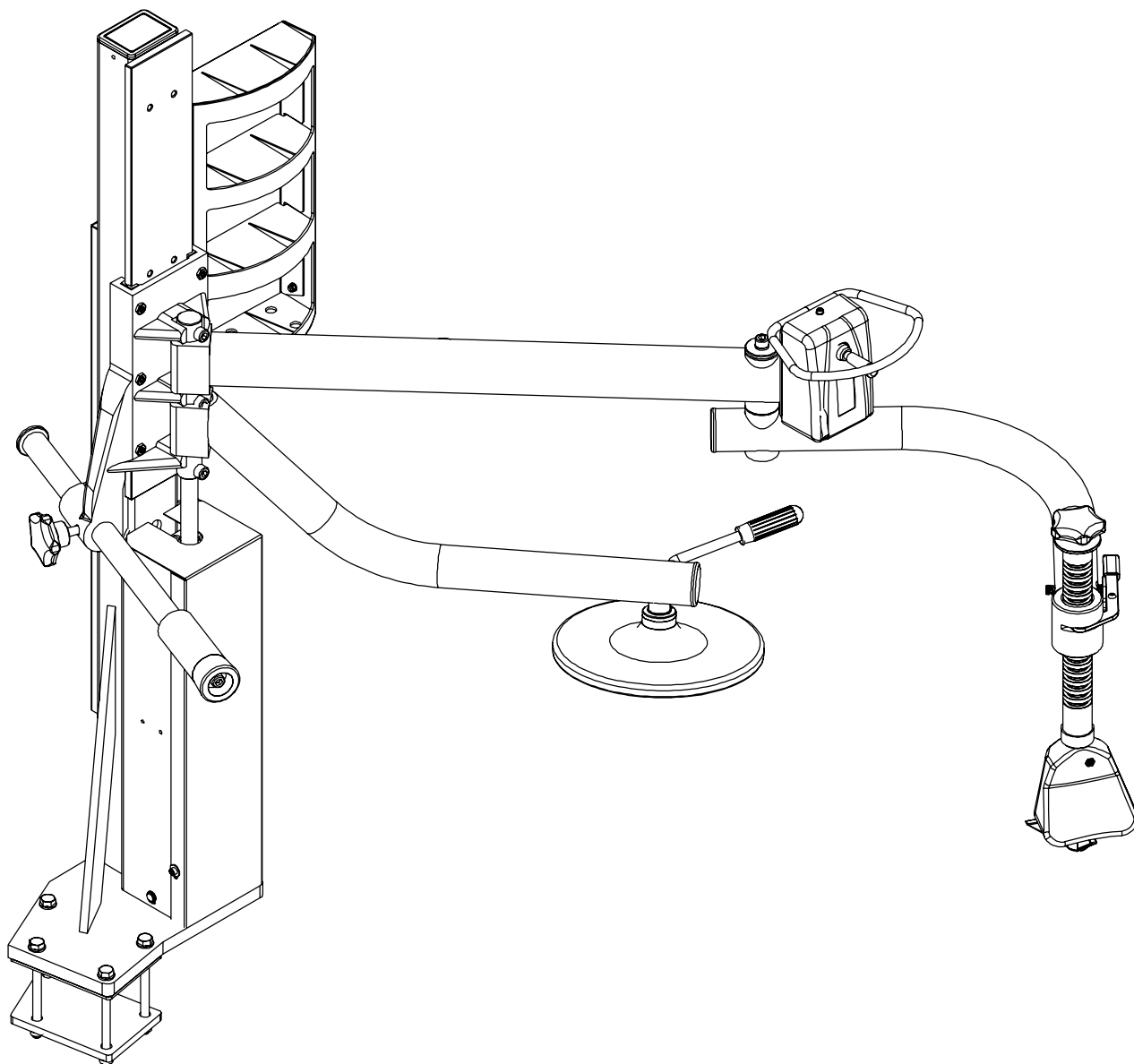
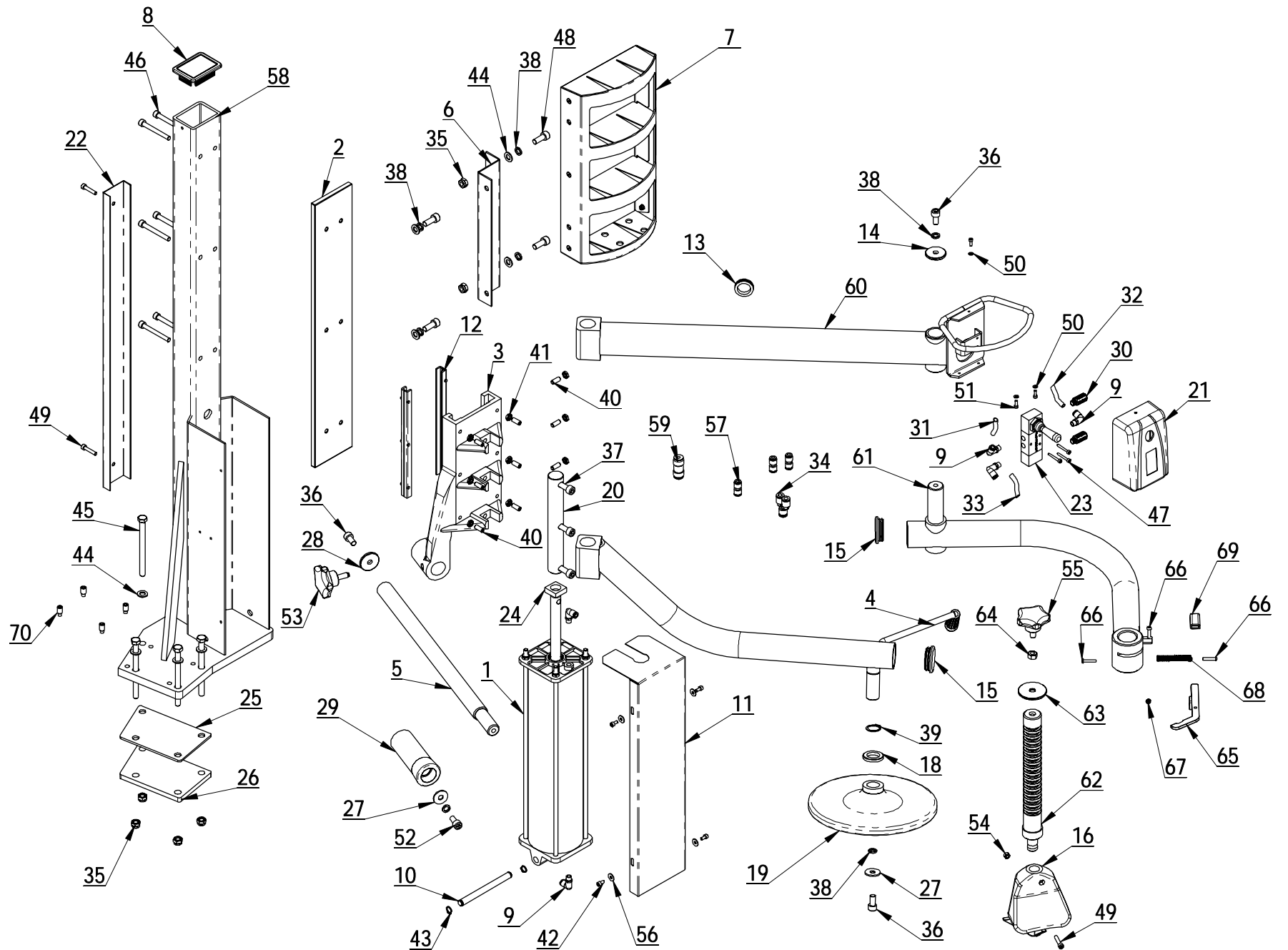


# AL320 SPARE PARTS LIST



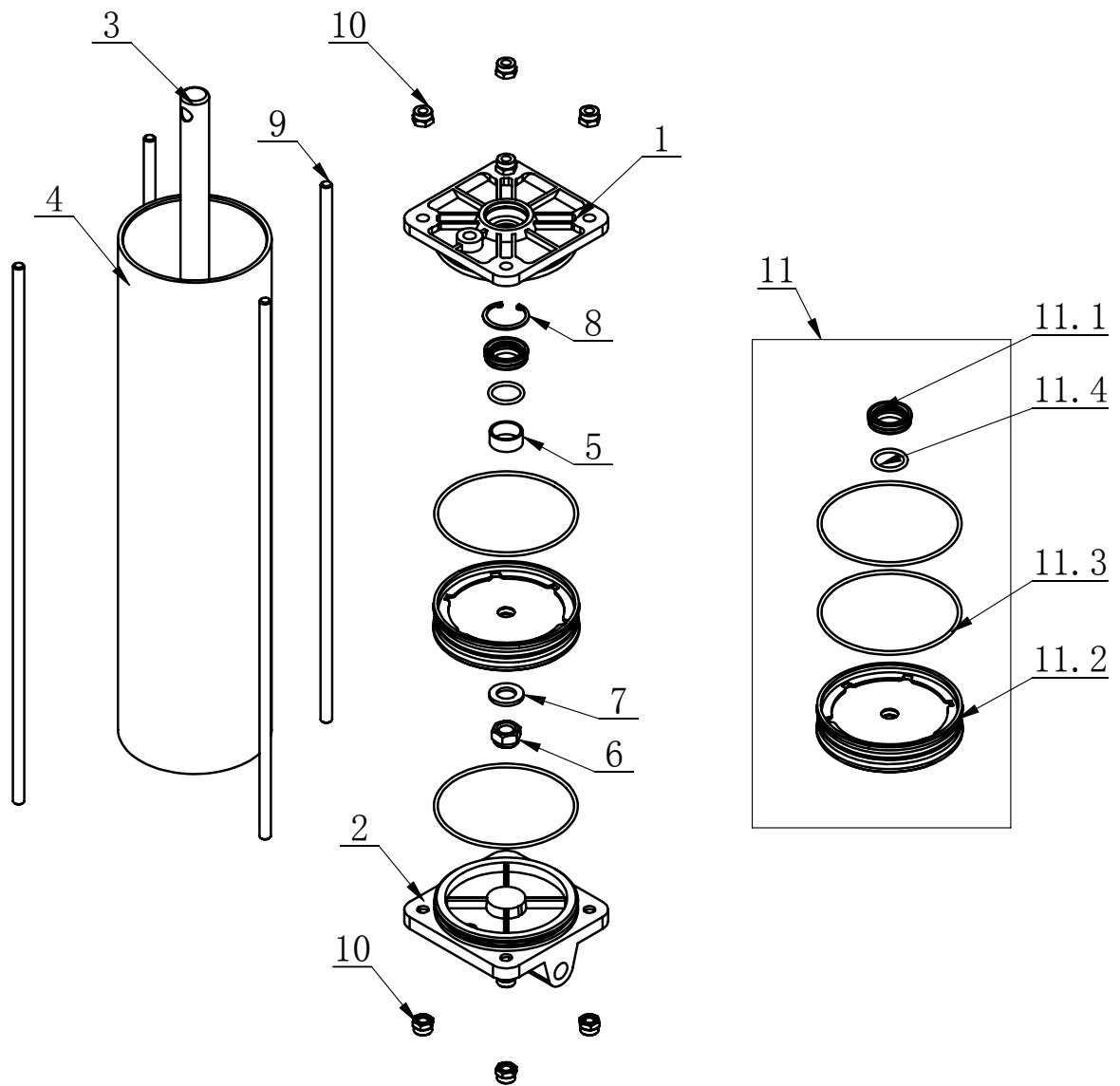


H-20-1000000

ITEM	PART. No	DESCRIPTION.	QT. Y
1	H-10-1500000	LIFTING CYLINDER ASSEMBLY	1
2	H-10-1000004	GUIDE RAIL	1
3	H-30-1000001	MOBILE CARRIAGE	1
4	H-30-1200000	BEAD LIFTING ARM	1
5	H-30-1000005A	MOVABLE SHAFT	1
6	H-10-1000015	FIXTURE PLATE	1
7	H-10-1900000A	TOOL BOX ASSY	1
8	H-10-1000003	PROTECTIVE COVER	1
9	FPL 6-01	MALE ELBOW	5
10	H-80-1000007	CYLINDER SHAFT	1
11	H-10-1000012	CYLINDER COVER PLATE	1
12	H-10-1000016	GUIDEWAY	4
13	H-12-1000002	PROTECTION RING	1
14	H-10-1000005	WASHER	1
15	H-10-1000008	ROUND COVER	2
16	H-80-1001000	PRESS BLOCK	1
17	TC-40-1200022	RUBBER COVER	1
18	H-10-1000017	WASHER	1
19	H-10-1000011	TURNTABLE	1
20	H-10-1000002	SHAFT CONNECTOR	1
21	H-10-1000020	HANDLE VALVE COVER	1
22	H-10-1000013	U-STEEL	1
23	4H230-06A	CONTROL VALVE	1
24	H-12-1000001	FELT WASHER	1
25	H-30-1000008	PAD PLATE	1
26	H-30-1000007	BOTTOM FLAT PLATE	1
27	GB96. 1-10	LARGE WASHER A GRADE	2
28	H-30-1000006	WASHER	1
29	H-30-1000003	PRESS CONE	1
30	FSK 01	PARTICLE SILENCER	2
31	PU-0605	PU-0602200	1
32	PU-0603	PU HOSE A $\Phi$ 6X4	1
33	PU-0600	PU HOSE C $\Phi$ 6X4	1
34	FPY-8	Y-SHAPE INSERT FITTING $\Phi$ 8	1
35	GB889. 1-M10	1-TYPE PREVAILING TORQUE TYPE HEXAGON LOCK NUT	6
36	GB70. 1-M10 $\times$ 20	INNER HEXA CYLINDRICAL SCREW	3
37	GB70. 1-M10 $\times$ 50	INNER HEXA CYLINDRICAL SCREW	3
38	GB93-10	STANDARD SPRING WASHER	7
39	GB894. 2-25	SHAFT ELATIC RETAINING RING B-TYPE	1
40	GB77-M8 $\times$ 20	INNER HEXA FLAT TERMINUS SET SCREW	9

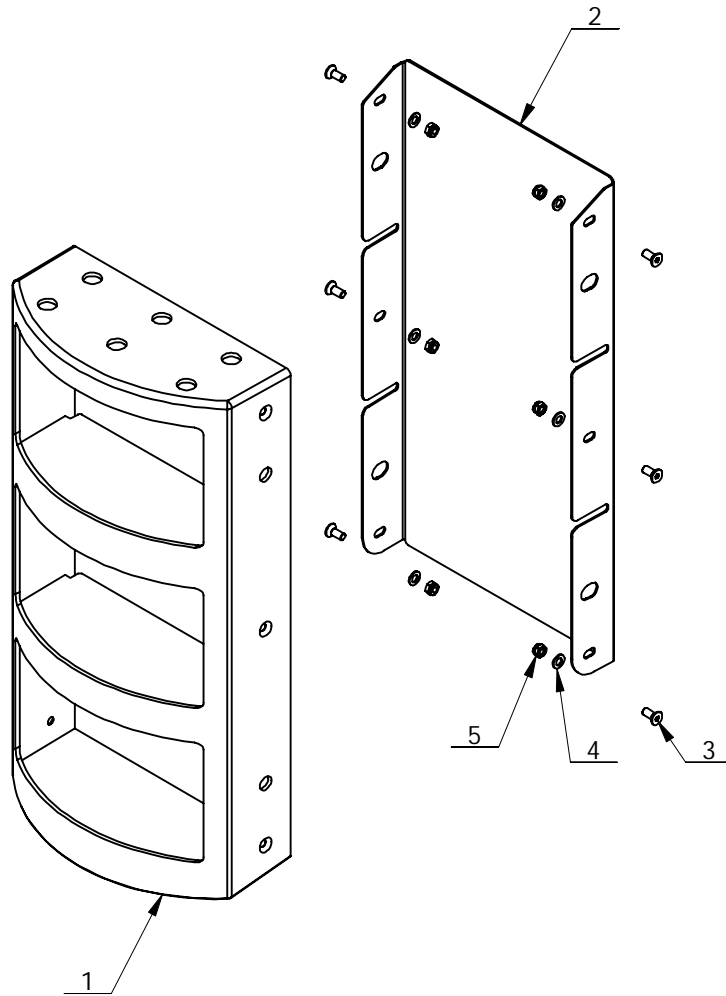
ITEM	PART. No	DESCRIPTION.	QT. Y
41	GB6172. 1-M8	HEXANGULAR THIN NUT	9
42	GB70. 1-M5× 10	INNER HEXA CYLINDRICAL SCREW	4
43	GB894. 1-12	SHAFT ELATIC BIG RETAINING RING A-TYPE	2
44	GB95-10	FLAT WASHER	8
45	GB5782-M10× 130	HEXANGULAR BOLT	4
46	GB70. 1-M8× 70	INNER HEXA CYLINDRICAL SCREW	6
47	GB70. 1-M4× 30	INNER HEXA CYLINDRICAL SCREW	3
48	GB70. 1-M10× 25	INNER HEXA CYLINDRICAL SCREW	4
49	GB70. 1-M6× 30	INNER HEXA CYLINDRICAL SCREW	3
50	GB95-4	FLAT WASHER	3
51	GB70. 1-M4× 12	INNER HEXA CYLINDRICAL SCREW	3
52	GB70. 1-M10× 20-LH	INNER HEXA CYLINDRICAL SCREW	1
53	H-80-1003000	HAND OF FIVE STARS	1
54	GB41-M6	HEXANGULAR NUT	1
55	H-80-1000013	THE STAR HANDLE M10-20	1
56	GB96. 1-5	LARGE WASHER A GRADE	4
57	FPU-6	UNION STRAIGHT	3
58	H-30-1300000	VERTICAL COLUMN	1
59	FPG 8-6	DIFFERENT DIA OF UNION STRAIGHT	1
60	H-20-1100000	SUPPORT ARM	1
61	H-80-1330100A	ROTATION ARM	1
62	H-80-1330003	PRESSURE SCREW	1
63	H-80-1330002	WASHER	1
64	GB41-M10	HEXANGULAR NUT	1
65	H-80-1330200	SNAP-GAUGE	1
66	GB70. 2-M5× 25	INNER HEXA CYLINDRICAL ROUND HEAD SCREW	3
67	GB889. 1-M5	1-TYPE PREVAILING TORQUE TYPE HEXAGON LOCK NUT	1
68	C-93-1700006	SPRING	1
69	H-80-1000010	COVER	1
70	GB79-M10× 20	INNER HEXA CYLINDRICAL TERMINUS SET SCREW	4

H-10-1500000



项目号	零件号	DESCRIPTION.	数量
1	H-10-1500002	CYLINDER FRONT COVER	1
2	H-10-1500005	CYLINDER BEAR COVER	1
3	H-10-1500004	PISTON ROD	1
4	H-10-1500003	CYLINDER	1
5	GB12613-23 × 20 × 10	BEARING-SLIDE	1
6	GB889.1-M12	1- TYPE PREVAILING TORQUE TYPE HEXAGON LOCK NUT	1
7	GB95-12	FLAT WASHER	1
8	GB893.1-30	ELASTIC RETAINING RING A-TYPE	1
9	H-10-1500006	BOLT	4
10	GB889.1-M8	1-TYPE PREVAILING TORQUE TYPE HEXAGON LOCK NUT	8
11	H-10-1590000	CYLINDER SEALING PARTS ASSEMBLY	1
11.1	CT-Y-0160007	SEAL-ROD, CYLNDR	1
11.2	H-10-1500001	PISTON	1
11.3	GB3452.1-95 × 2.65-G	HYDRAULIC-PNEUMATIC RUBBER O-RING G TYPE	2
11.4	GB3452.1-20 × 2.65-G	HYDRAULIC-PNEUMATIC RUBBER O-RING G TYPE	1

H-10-1900000A



ITEM	PART. NO	DESCRIPTION.	QT. Y
1	H-10-1900005	TOOL BOX ASSY WELDING	1
2	H-10-1900006	SPACE	1
3	GB70. 3-M5× 12	INNER COUNTERSUNK SCREW	6
4	GB95-5	FLAT WASHER	6
5	GB889. 1-M5	1-TYPE PREVAILING TORQUE TYPE HEXAGON LOCK NUT	6